

Step 6.

To lower the reinforced tube (step 6-1), unscrew the locking mechanism on tube (step 6-2) to extend the tube to lengthen it, and place the end of the tube into the hole (step 6-3). Finally, tighten the locking mechanism (noted in step 6-2).

Warning & Cautions

Please read all warnings and instructions thoroughly before assembling.

FOR PET USE ONLY. NOT FOR USE WITH CHILDREN.

Only assemble as directed and using all required parts. If installed improperly, the gate could become unstable or dislodged from the doorway.

Never leave pet unattended. Stop using if/once your pet can climb over or push the gate loose.

Use only with the locking/latching mechanism securely engaged.

Never use at top of stairs.

If assembling onto a surface other than drywall or wood, please consult with a professional for proper installation.

Do not assemble or use if any components are missing or damaged.

Check the gate regularly to ensure all hardware and mountings are tightened.

Keep these instructions handy for further use.

Care & Maintenance

Periodically check the gate for signs of damage, wear, or missing components. Do not use if any part is missing, worn or damaged. Check the gate regularly to ensure all the hardware and mountings are tightened. Do not use abrasive cleaners or bleach. Clean by using a sponge with warm water and a mild detergent. Wash with mild detergent. Don't use any abrasive cleaners or bleach.

Questions

Questions? Call our friendly customer service anytime. We're here 24/7 at 1.800.672.4399



frisco[®]
by chewy



Expandable and Retractable Mesh Gate Instruction Manual

Sku# 352633, 352634

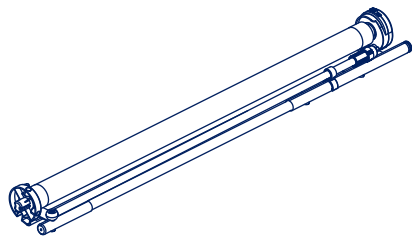
FOR PET USE ONLY.

Assembly Instructions

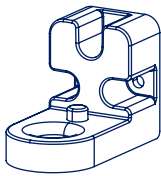
Please Read Through All Instructions Before Starting

Get Set

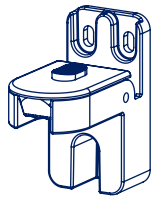
Prior to assembly, please be sure to identify and sort all parts shown below.



A Mesh Gate (1)



B Bottom Bracket (2)
(Part B and part C are in the accessory parts box)



C Top Bracket (2)



D Position Papers (2)
(Help to align the gate brackets to the door frame.)



E Screws (12)

The Tools for The Job

Aside from the included parts, you'll also need:

F A Phillips head screwdriver*

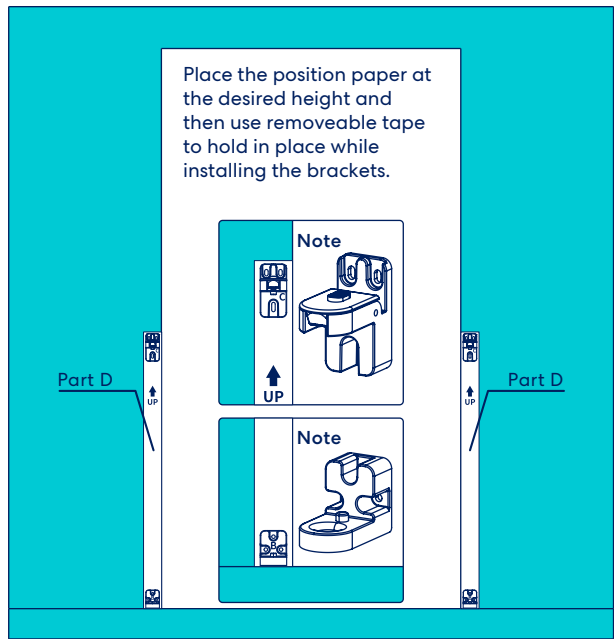
G A buddy (optional)



*Power tools allowed

Part 1 - Install the Gate

1

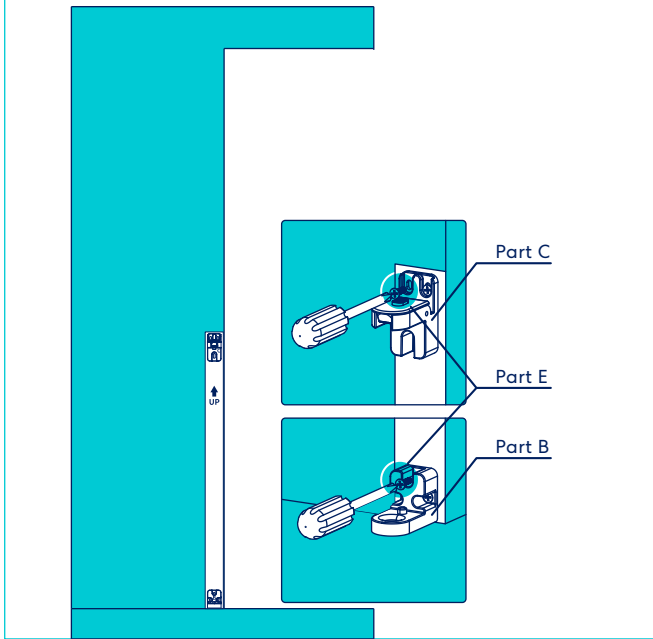


Step 1.

Place the two pieces of position paper (part D) onto both sides of door frame, be sure that the edge of position paper aligns at the edge of door frame and the bottom of position paper is flush with the floor surface.

Note: The two pieces of the positional paper (part D) can also be placed on the inside of the door frame to face one another.

2



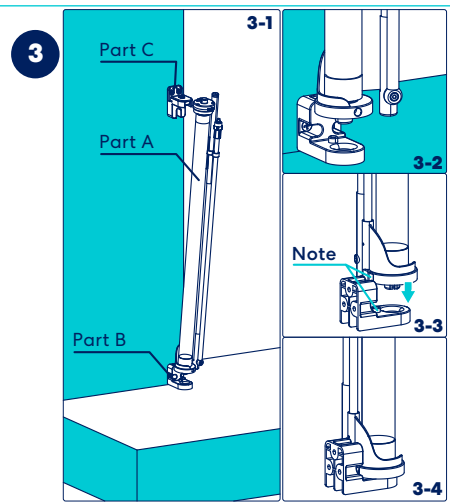
Step 2.

Place the brackets (parts B and C) on the position papers (part D). Begin to screw in Part C to the top of the position paper and part B to the bottom. After the screw holes are made through the position paper, remove the paper and screw the brackets back to the screw markings you just made.

Call 1.800.672.4399 for questions

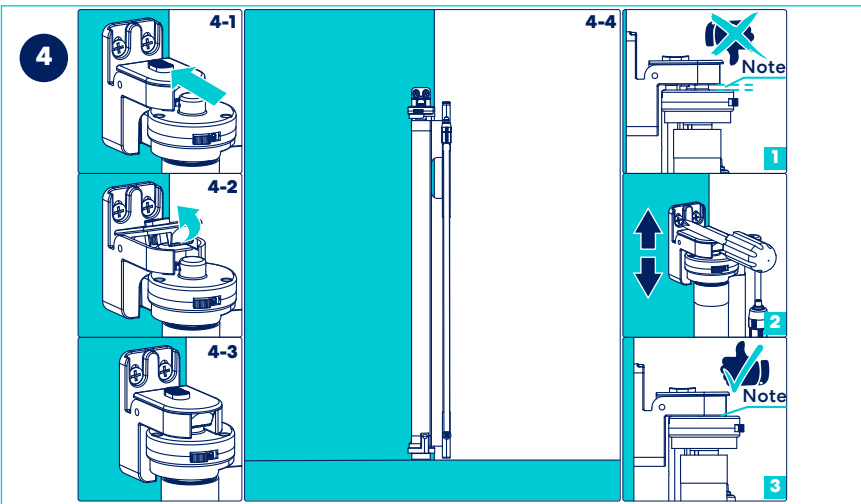
Assembly Instructions

Please Read Through All Instructions Before Starting



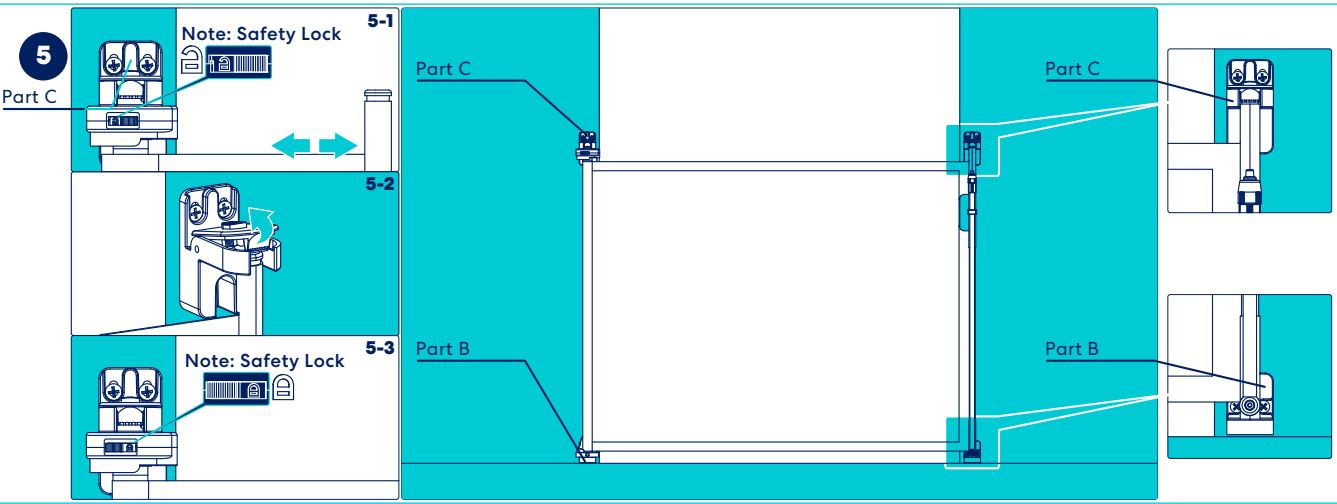
Step 3.

Align the bottom of gate (part A) with the hole on the bottom bracket (Part B).



Step 4.

Push the button on the top bracket (part C, step 4-1) towards the wall to flip the top upwards (step 4-2). Then push the gate (part A) inward and close the top of the bracket (step 4-3). If the brackets (parts B and C) are too far apart or too close to fit the gate (part A), then unscrew all screws and follow steps 1-3 to reposition.



Step 5.

Open the safety lock on the top bracket (part C, step 5-1) to pull the mesh gate to the right. Connect the mesh gate onto the top bracket (part C). Be sure the bottom of the mesh gate (part A) connects to the hole in the bottom bracket (part B). If found that the brackets (parts B and C) are too far apart or too close to fit the gate (part A), then unscrew all screws and follow steps 1-3 to reposition.

Call 1.800.672.4399 for questions