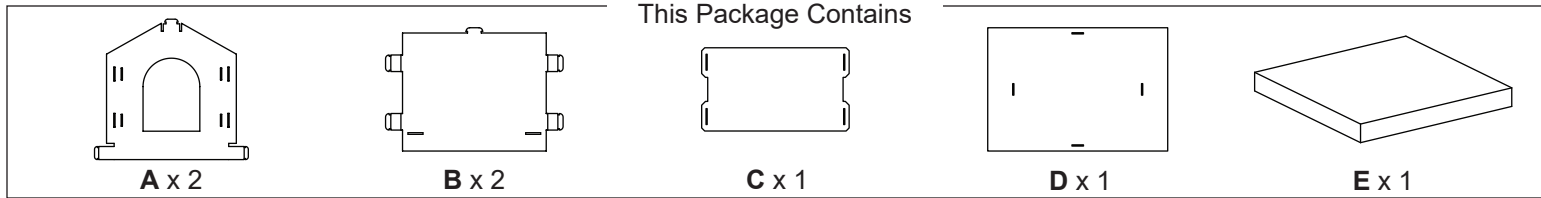


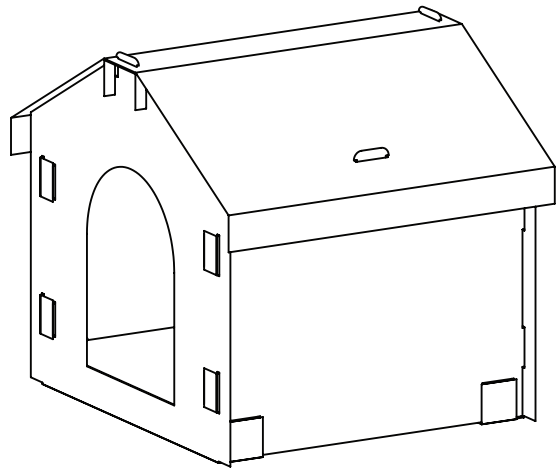
Festive Cabin Cardboard Cat House

25CCW-SR002

03/31/25 V1

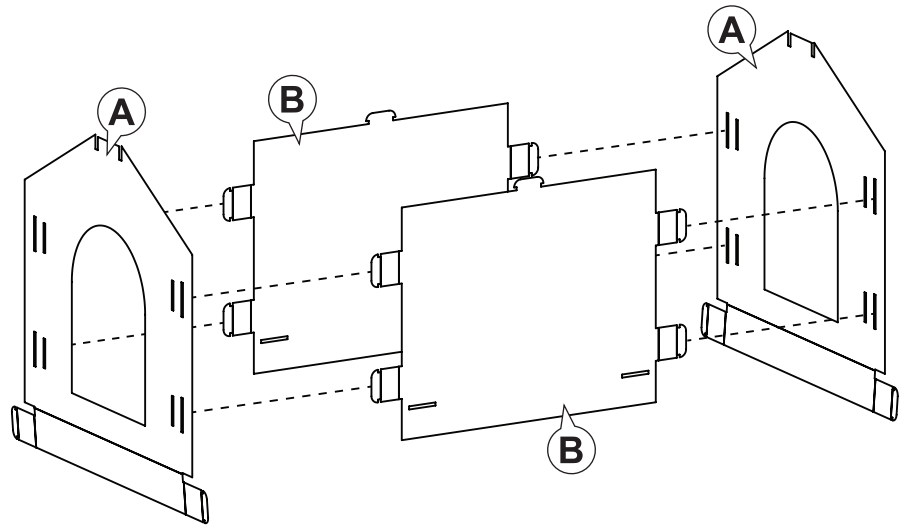


Completed Item



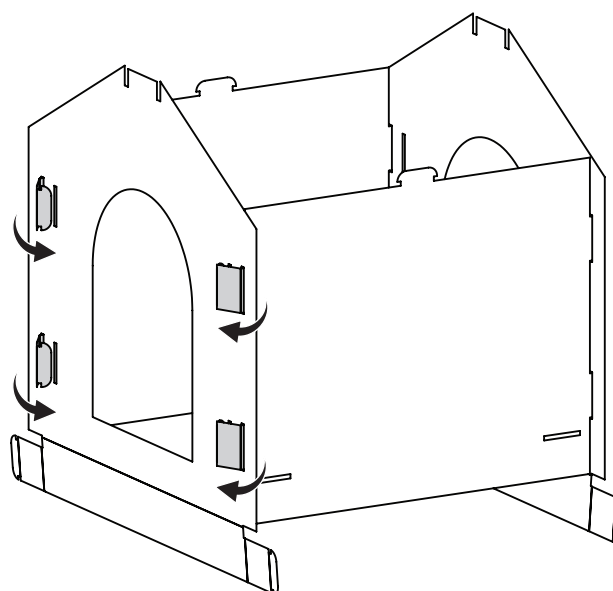
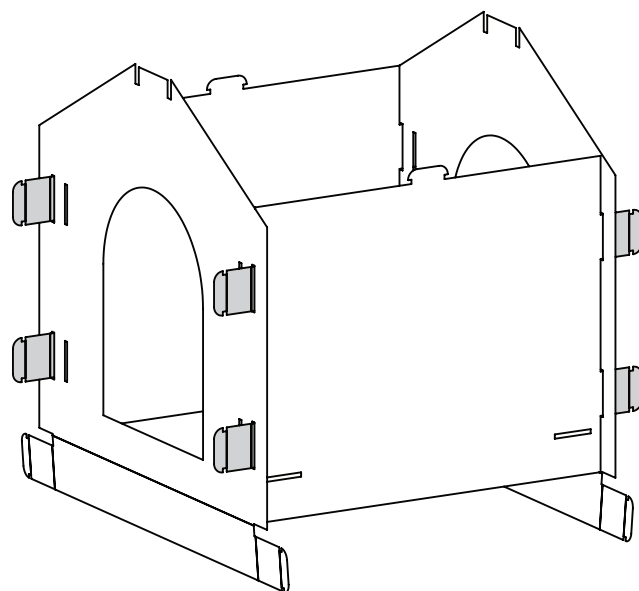
Step 1

Assemble **Panels (A)** and **(B)** as pictured below. Insert the tabs of **Panels (B)** through the large outer slots in panels **(A)**.

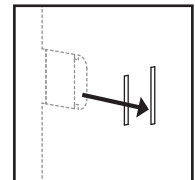


Step 2

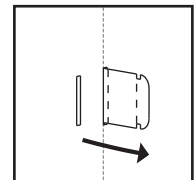
Fully insert tabs into **Panels (A)**, then wrap the tabs around and insert into the small slots as detailed below. Repeat on the back side.



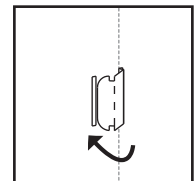
Line up tab with large outer slot.



Push completely through.



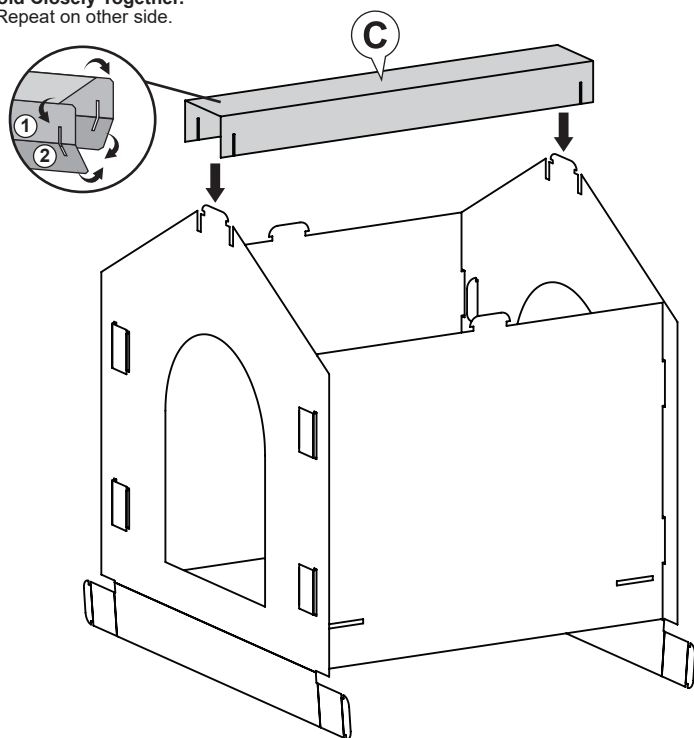
Fold front and insert tab into small slot.



Step 3

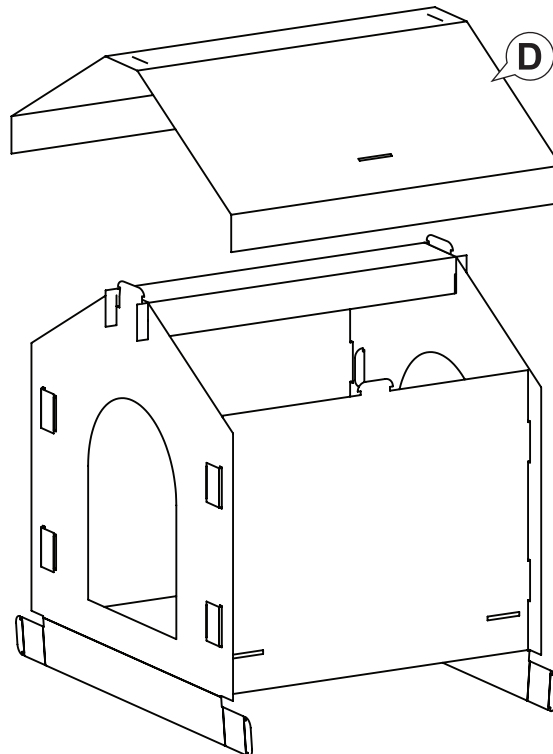
Fold **Platform (C)**, and while pinching the platform together tightly, insert into slots on top of **Completed Panels** as shown.

Fold over **Panel (1)** and then fold **Panel (2)** underneath it. **Hold Closely Together.** Repeat on other side.



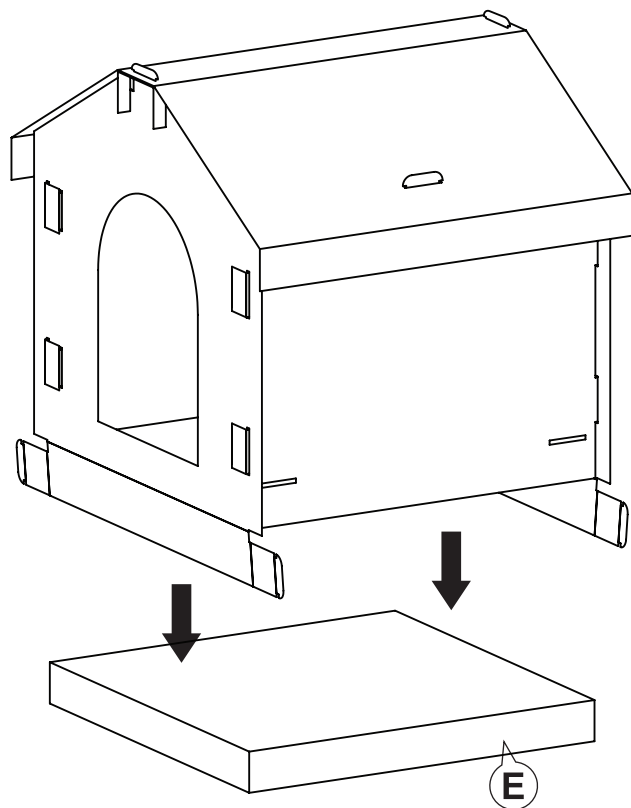
Step 4

Attach **Roof (D)** to the **Completed Panels** as pictured below.



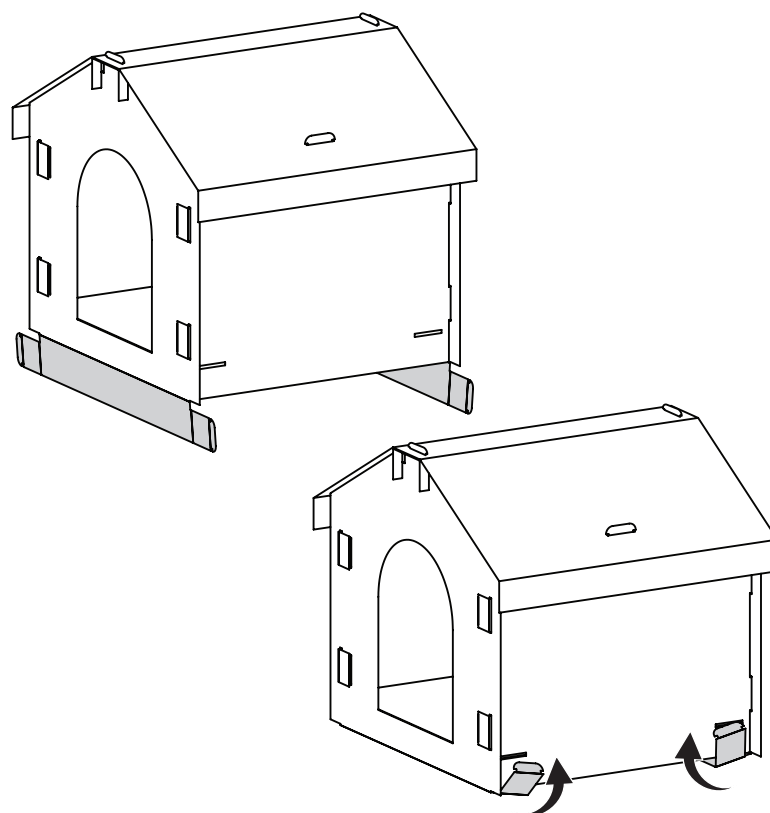
Step 5

Place **Combined Panels** over **Scratcher (E)**.



Step 6

Fold bottom flaps of **Panels (A)** under **Scratcher (E)**. Fold front and back tabs up, and insert into the slots of **Completed Panels** as pictured below.



Because every cat is different, it is important to monitor your cat's behavior with this product. If at any time your cat damages this item, or any portion of this item becomes damaged, remove the damaged portion or discontinue use of the product.

QUESTIONS?

Call our friendly customer service team any time. We're here 24/7! 1-800-67-CHEWY (672-4399)