

FIG. 1

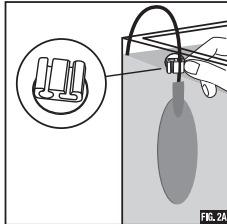


FIG. 2A

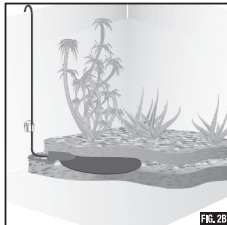
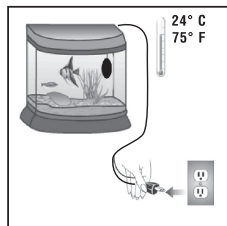


FIG. 2B



Dear Customer,

we thank You for choosing this quality product. Please read the following instructions very carefully for best understanding of the characteristics of this new, innovative product. MINI heater helps in-crease by a few degrees the water temperature of a mini aquarium (7,5W: 2-5 gal/ 8-20 l - 15W: 5-10 gal/20-40 l) compared to the room temperature where it is positioned.

DO NOT PLUG IN BEFORE READING CAREFULLY THE FOLLOWING INSTRUCTIONS

Installation

1. Submerge the heater in the aquarium at least up to the connection with the electrical cord -**Fig. 1**-.
2. Fix the heater, using the suction cup, to the side of the aquarium -**Fig. 2A**- or position it on the bottom. You can also connect it completely with gravel, MINI can operate in any position -**Fig. 2B**-.
3. After positioning the heater, plug it in remembering to keep your hands out of the aquarium.
4. During the summer season or if the room temperature reaches or exceeds 75° F (24° C) unplug the heater -**Fig. 3**-.

Attention

If the heater should operate in a partially dry or completely dry situation, it will not sustain any damage, but the heating element might reach a temperature as high as 176° F (80° C). Check that the heater never works dry and be careful that it is not in contact with materials that can be damaged by the temperature in case it operates dry. Be certain that the heater is not in direct contact with the following: bottom of the tank, water plants or other objects that might be damaged by the temperature.

BY NOT FOLLOWING ALL THE SAFETY INSTRUCTIONS PROVIDED WITH THE HEATER, CONSTITUTES MISUSE AND MAY RESULT IN DAMAGE TO THE HEATER AND/OR ENVIRONMENT.

- Before removing MINI from your tank, always disconnect it from the power supply and let it cool for approx. 5 minutes.
- Do not operate the heater unless it is completely submersed.
- Never attempt to service or repair the heater in any way.
- Do not use and discard if either the cord or the heater are damaged.
- Do not tamper or damage the surface of the heater with scissors, nails or any pointing cutting object.
- Do not place hands or any object in the aquarium tank while heater is connected to electrical mains and operating.
- Always use heater with a thermometer: if water temperature should exceed 75° F (24° C), unplug the heater.
- Close supervision is necessary if the heater is used by children.
- Do not yank the cord from the electrical outlet, hold the plug and pull from the outlet.
- Do not use this heater for any use other than to increase the water temperature by a few degrees in a 2-5 gal/8-20 l (7,5W) or in a 5-10 gal/20-40 l (15W) aquarium.
- Make sure that the heater is properly installed before operating it.
- Only use extension cord with proper electrical ratings.
- This appliance is not intended for use by young children or infirm persons without supervision. Young children should be super vised to ensure that they do not play with the appliance.

Do not operate the heater:

- Under an A/C vent;
- In direct sunlight;
- Near a heat source;
- Under a light source which is on for extended periods of time.

European Union Disposal Information



This symbol means that according to local laws and regulations your product should be disposed of separately from household waste. When this product reaches its end of life, take it to a collection point designated by local authorities. Some collection points accept products for free.

The separate collection and recycling of your product at the time of disposal will help conserve natural resources and ensure that it is recycled in a manner that protects human health and the environment.

Size	Power	Aquariums	Temp. incr.
diam. 9 cm	7.5 W	8 L	~2.5°C
		20 L	~2°C
13,8 x 6,3 cm oval	7.5 W	8 L	~2.5°C
		20 L	~2°C
15,6 x 8,2 cm oval	15 W	20 L	~2.5°C
		40 L	~2°C

The difference between the ambient/room temperature and the aquarium temperature reached by using MINI can vary due to location and lighting. Always check water temperature with a thermometer.

Der Unterschied zwischen der Umgebungs- bzw. Raumtemperatur und der Temperatur, die durch die Verwendung des MINI erreicht wird, ist abhängig von Platzierung und Beleuchtung des Aquariums. Die Wassertemperatur sollte daher immer mit einem Thermometer überprüft werden

La différence entre la température ambiante et la température de l'aquarium obtenue avec Mini peut varier selon son emplacement ou son illumination. Il est donc conseillé de toujours contrôler la température de l'eau avec un thermomètre.

la diferencia entre la temperatura ambiental y la temperatura del acuario obtenida con Mini puede variar según el posicionamiento o bien la iluminación del mismo. Aconsejamos por lo tanto controlar siempre la temperatura del agua con un termómetro.

la differenza tra temperatura ambiente e temperatura dell'acquario ottenuta con Mini può variare a seconda del posizionamento o dell'illuminazione dello stesso. Si consiglia quindi di controllare sempre la temperatura dell'acqua con un termometro.

het verschil tussen de omgevingstemperatuur en de temperatuur van het aquarium verkregen met de Mini kan verschillen, afhankelijk van de plaats of de verlichting ervan. Men raadt dus aan de watertemperatuur altijd met een thermometer te controleren.

Made in China



GARANTEE

The device is guaranteed for a period of 24 months from the date of purchase, against defects in material and/or workmanship. Our guarantee does not apply to claims the cause of which is due to installation and operation faults, lack of maintenance, misuse of the device, effects of frost, furring and lime deposits or amateur repair attempts. The consumable materials and parts subject to wear and tear, that must be periodically replaced for normal maintenance of the device, are not included in our guarantee. The certificate of guarantee must be completed by the retailer and is to be sent with the device in case of return, together with the purchase receipt recording the date of purchase.

GARANTIEBEDINGUNGEN

Die Garantiefrist beträgt 24 Monate ab Kaufdatum für fehlerhaftes Material und Fabrikationsfehler. Von der Garantie ausgeschlossen sind Schäden, die auf Montage- oder Behandlungsfehler, mangelhafte Wartung, Frostschäden, Kalkablagerungen oder unsachgemäße Reparaturen zurückzuführen sind, sowie Verbrauchs- und Verschleißmaterial, das zur ordnungsgemäßen Wartung und Reinigung in regelmäßigen Abständen ausgetauscht werden muss. Im Garantiefall schicken Sie bitte das reklamierte Gerät mit der vom Händler ausgefüllten Garantiekarte und der datierten Kaufquittung oder Rechnung ein.

GARANTEE

Cet appareil est garanti pendant une période de 24 mois à partir de la date d'achat contre les défauts de matériel et de fabrication. Les réclamations dont les causes sont dues à des erreurs de montage, de manœuvre et de manque d'entretien, à l'action du gel, à des dépôts de calcaire ou à des tentatives de réparation non appropriées ne sont pas comprises dans la couverture de notre garantie. Les matériaux à usure normale et tous les éléments également sujets à usure qui doivent être remplacés périodiquement lors d'un entretien ordinaire ainsi que lors du nettoyage de l'appareil ne sont pas couverts par la garantie. Le certificat de garantie doit toujours être rempli par le revendeur et devra toujours accompagner l'appareil s'il est restitué avec le ticket de caisse ou la facture prouvant la date d'achat.

GARANTÍA

Este aparato está garantizado por un periodo de 24 meses desde la fecha de compra, de defectos de material y de fabricación. No están cubiertas por nuestra garantía las reclamaciones por errores de montaje, de maniobra y de falta de manutención, por la acción del hielo, por incrustaciones calcáreas o por intentos equivocados de reparación. No están cubiertos por nuestra garantía tampoco los materiales de consumo y todos los componentes sujetos a desgaste que tienen que ser sustituidos periódicamente para la manutención ordinaria y la limpieza del aparato. El certificado de garantía tiene que ser rellenado por el vendedor y tendrá que acompañar el aparato en caso de devolución, con el ticket de compra o el recibo fiscal como comprobante de la fecha de compra.

GARANZIA

Quest'apparecchio è garantito per un periodo di 24 mesi dalla data di acquisto, da difetti di materiale e di fabbricazione. Non rientrano nella copertura della nostra garanzia i reclami le cui cause sono dovute a errori di montaggio, di manovra e di mancanza di manutenzione, all'azione del gelo, a depositi calcarei o a tentativi non appropriati di riparazione. Non rientrano nella copertura della garanzia anche i materiali di consumo e tutte le componenti soggette ad usura che devono essere sostituiti periodicamente per l'ordinaria manutenzione e pulizia dell'apparecchio. Il certificato di garanzia deve essere compilato a cura del rivenditore e dovrà accompagnare l'apparecchio nel caso sia restituito, assieme allo scontrino o ricevuta fiscale comprovante la data d'acquisto.

GARANTEE

Dit apparaat heeft vanaf de aankoopdatum een garantie van 24 maanden tegen mate-riaaldefecten en fabrieksfouten. Redamaties waarvan de oorzaak ligt aan een verkeerde montage, manoeuvre en gebrek aan onderhoud, inwerking van vorst, kalkaanslag of niet gelukte reparatiepogingen, maken geen deel uit van onze garantie. Ook verbruiksmaterialen en alle onderdelen die onderhevig zijn aan slijtage, die voor het gewone onderhoud en reinigen van het apparaat regelmatig vervangen dienen te worden, maken geen deel uit van de garantie. Het garantierecht dient zorgvuldig door de dealer te worden ingevuld en dient het apparaat, samen met de kassabon of bon met BTW, waarop de aankoopdatum aangeduid is, te begeleiden indien het teruggegeven wordt.

TAKUU

Tällä tuotteella on 24 kk takuu myyntipäivästä, koskien valmistus tai rakennevikkoja. Takuu ei koske mikään tuote on asennettu tai käytetty väärin, käytetty muuhun tarkoitukseen kuin akvaarioon, on jäänyt, tehty omatoimisia rakenteellisia korjauksia. Kaikki liikkuvat ja kuluvat osat eivät kuulu takuuseen. Takuu ei koske mitään väillisiä vahinkoja. Takuukortti ja ostokuitti on liitettävä tuoteen mukaan takuukorjaukseen. Takuu ei korvaa lähetyskuluja.

Aquarium heater User's Guide

