



800-428-8560  
midwesthomes4pets.com  
P.O. Box 1031  
Muncie, Indiana 47308



## Hutch Extension

Assembly Instructions for Model Number 158HEX

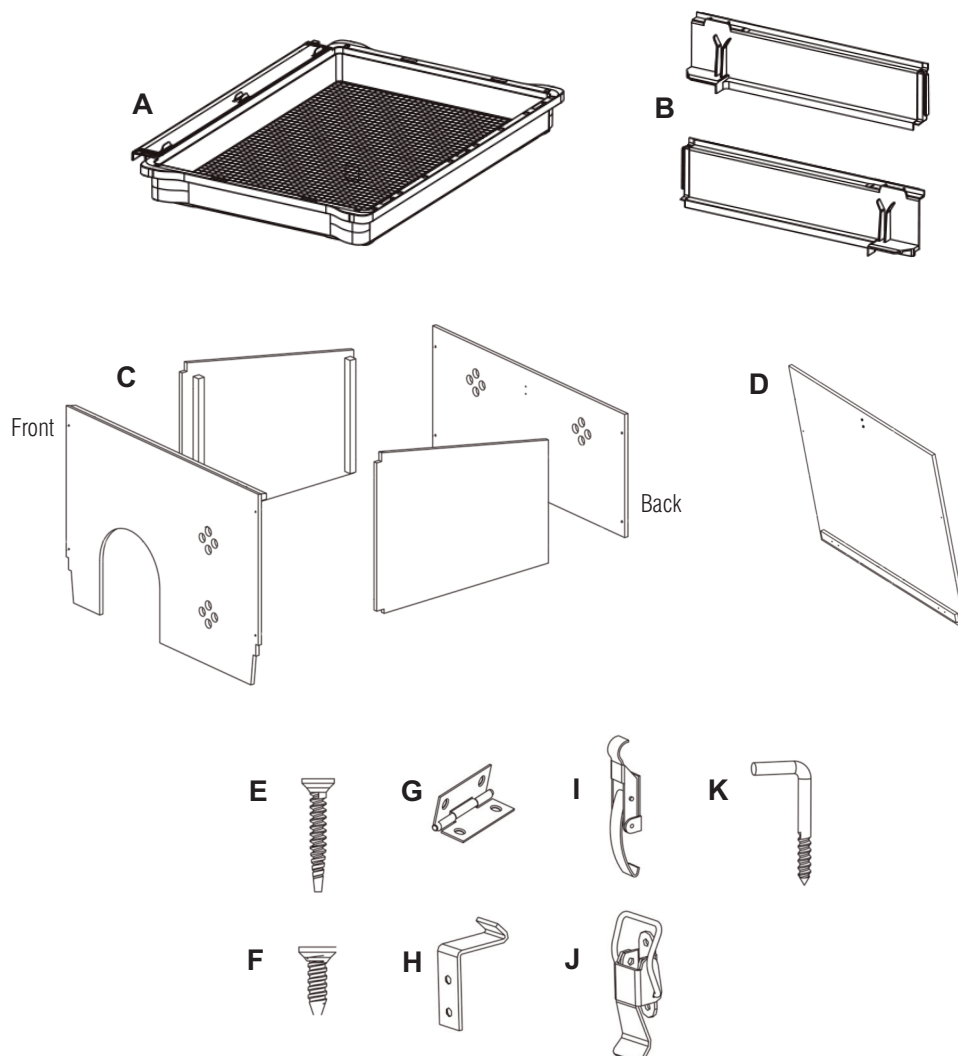
### IMPORTANT INFORMATION

Unwrap and remove all parts from the box. Keep the box and packing material until the product is assembled. In case of return or exchange, failure to return product in similar condition as received could result in limited reimbursement. Please save sales receipt as proof of purchase for warranty purposes. Check to ensure you have all the parts below. If you discover any parts are missing, immediately call our toll-free service helpline at 1-800-428-8560 (Monday - Friday 9 a.m. to 4 p.m. EST) or at [info@midwesthomes4pets.com](mailto:info@midwesthomes4pets.com).

### PARTS IDENTIFICATION

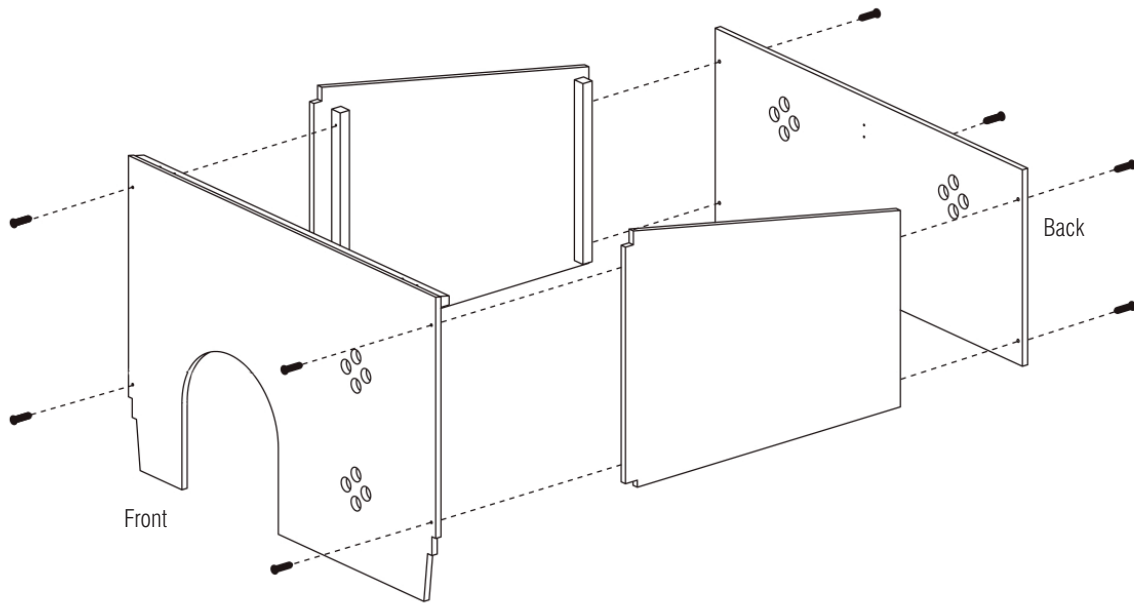
*NOTE: A small Phillips Screwdriver is required for assembly. The **158HEX Hutch Extension** connects to the 158 Wabbitat Deluxe Rabbit Home. Parts from the 158 will be used to complete the assembly of the connected unit. If needed, for future reference, instructions for the 158 base unit can be downloaded at [midwesthomes4pets.com](http://midwesthomes4pets.com).*

- A - Plastic bottom
- B - Plastic sides
- C - Wood panels: front, back, and two sides
- D - Wood top door
- E - Long screws - 8
- F - Short screws - 14
- G - Hinges - 2
- H - "S" hook
- I - Metal clip
- J - Metal lock
- K - "L" hooks - 2

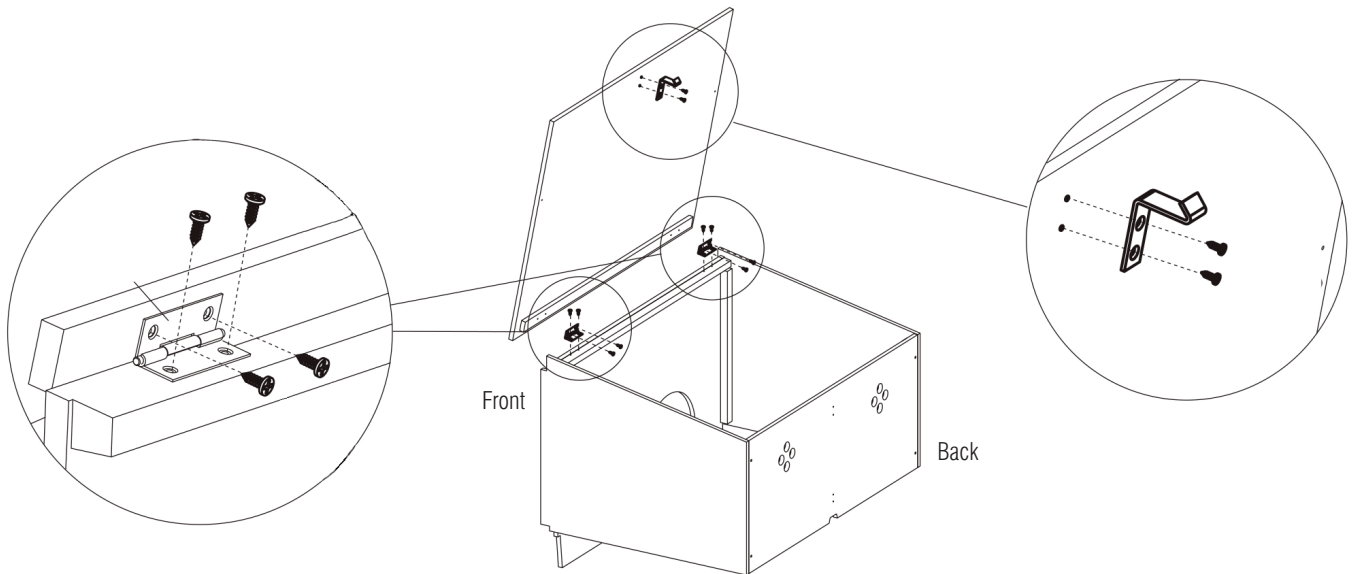


## ASSEMBLY INSTRUCTIONS

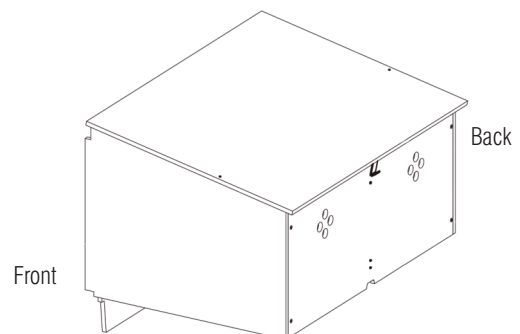
1. Using the dots as guides, use a Phillips screwdriver and the long screws (E) to connect the four panels of the hutch.



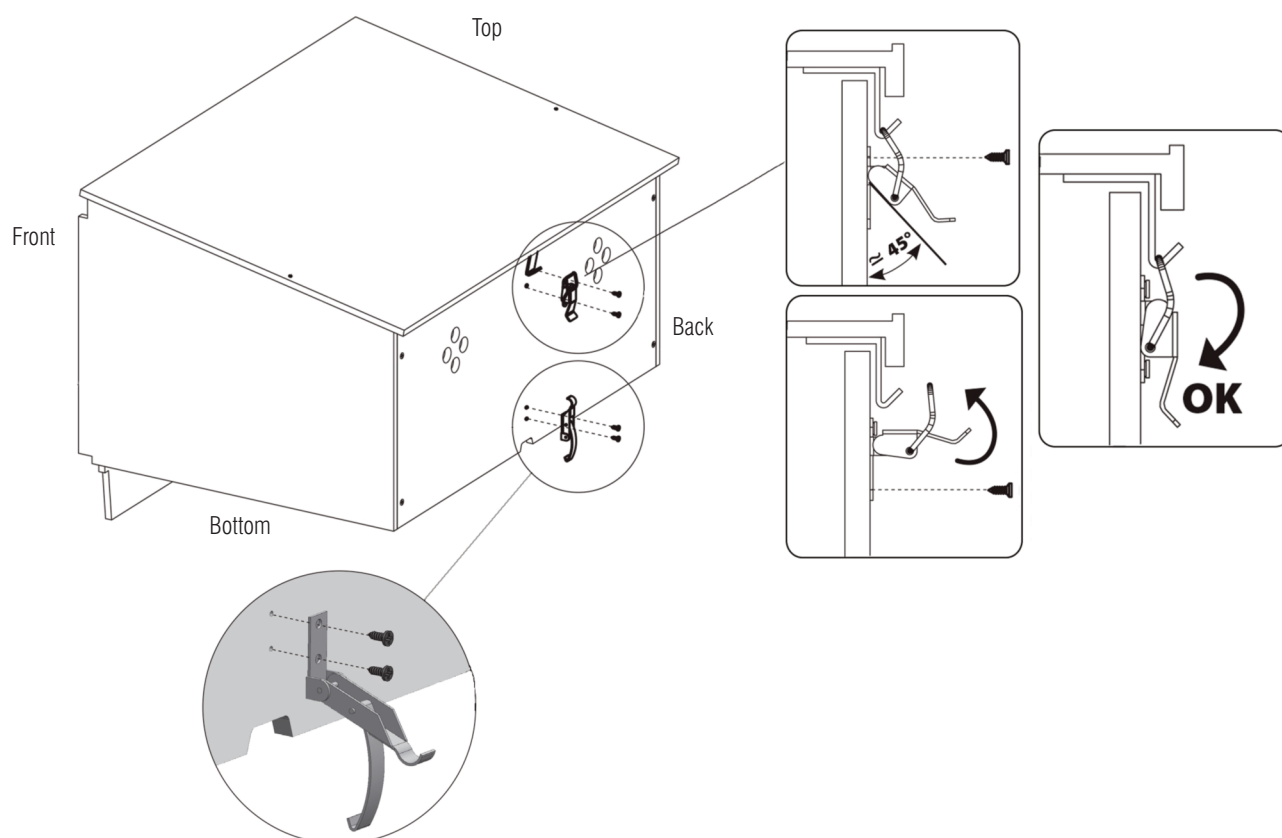
2. Using eight of the short screws (F) and the two hinges (G), attach the lid to the hutch as shown. Use two additional short screws (F) to attach the “S” hook (H) to the underside of the lid.



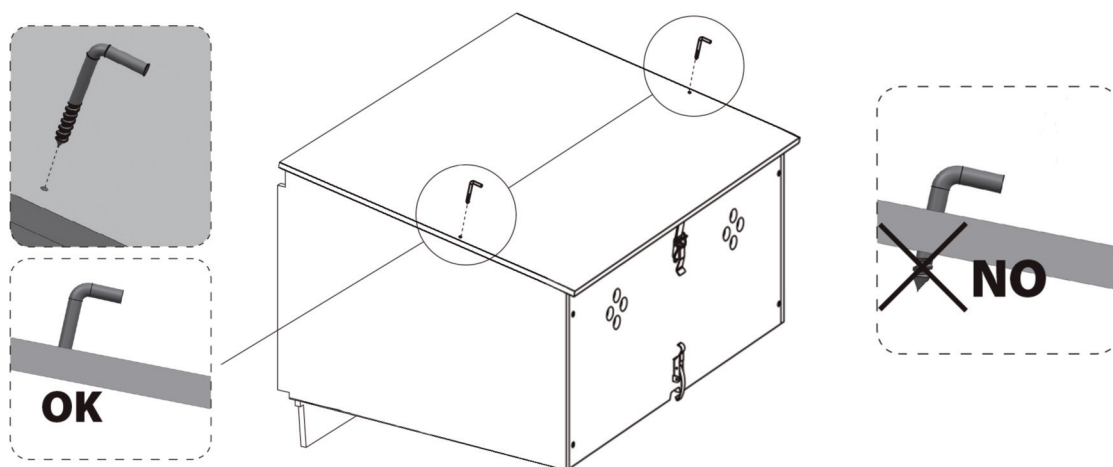
NOTE: When assembled correctly, the lid will lie flush on the top of the hutch with no gaps along the sides, and the end of the “S hook” will be exposed on the outside, below the back lip of the lid.



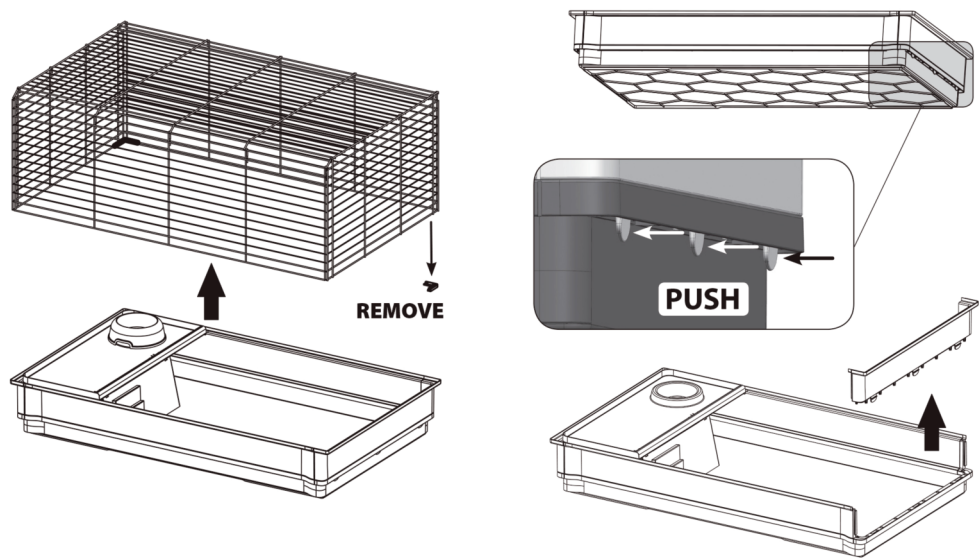
- Using two short screws (F) and the dots as guides, attach the metal clip (I) at the bottom back of the hutch as shown. Using the remaining short screws, attach the metal lock (J). Begin by hanging it on the “S” hook that is attached to the lid. Keeping the hinge portion at about a 45 degree angle, use a Phillips screwdriver to drive in the top screw. Once in place, lift the hinge mechanism to expose the lower hole for the remaining screw.



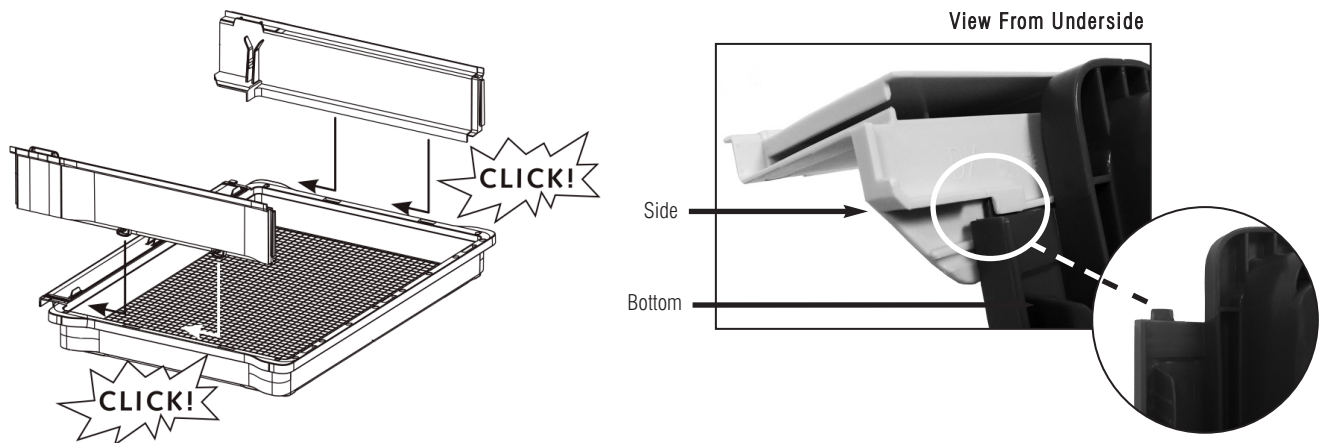
- Using the dots as guides, screw the two “L” hooks (K) into the lid, making sure you do not screw too far to where it becomes exposed on the underside of the lid. The “L” hooks will hold the wire end from the base unit in place when fully assembled.



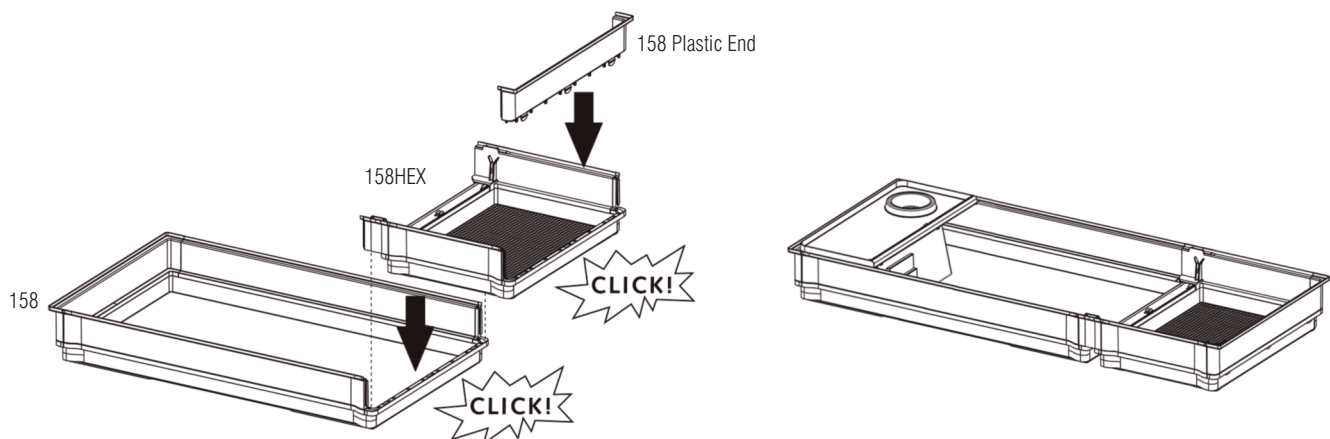
5. Partially disassemble the 158 base unit. Remove the wire top from the 158. The corner stabilizer that rests next to the elevated feeding area should remain attached to the wire top. The other corner stabilizer should be set aside. Remove the plastic end from the bottom and keep it close by. You will use this in Step 7.



6. Assemble the 158HEX bottom tray. Connect the two plastic sides (B) to the plastic bottom (A) as shown. Make sure the tabs on each side of the bottom slide into the grooves of the sides.

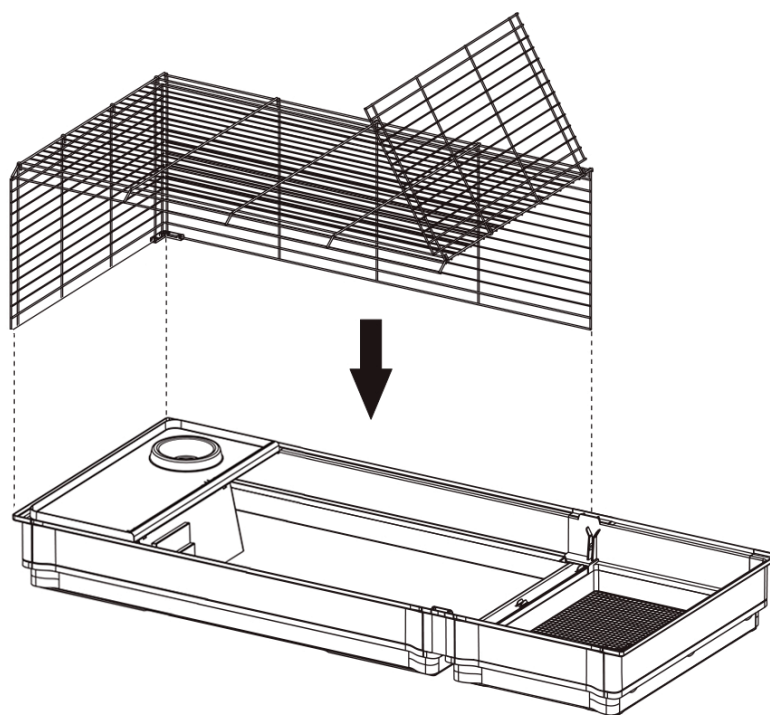


7. Attach the assembled extension bottom to the plastic bottom of the 158 base unit. Attach the end that was removed from the 158 base unit in Step 5 to the end of the extension.

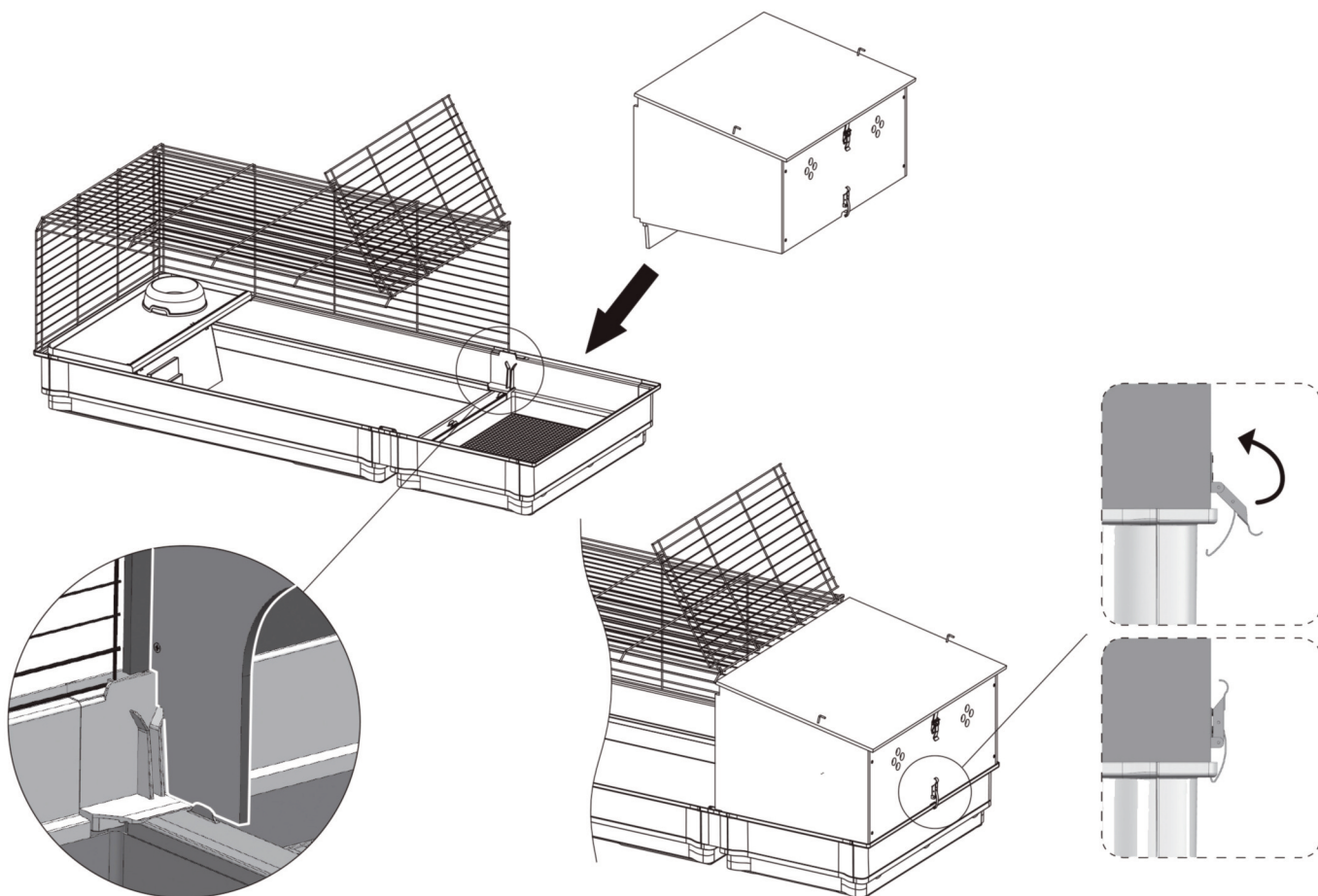




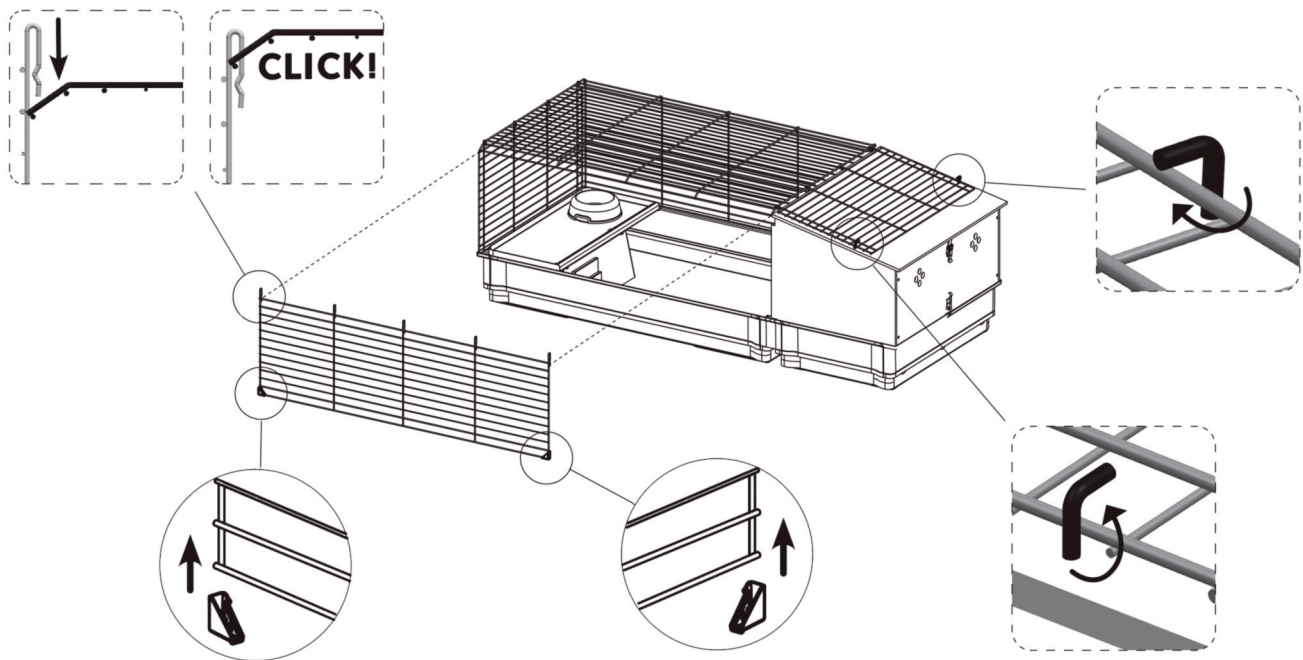
8. Place the wire top from the 158 back on the 158 base unit. The corner stabilizer should remain on the corner near the elevated feeding area.



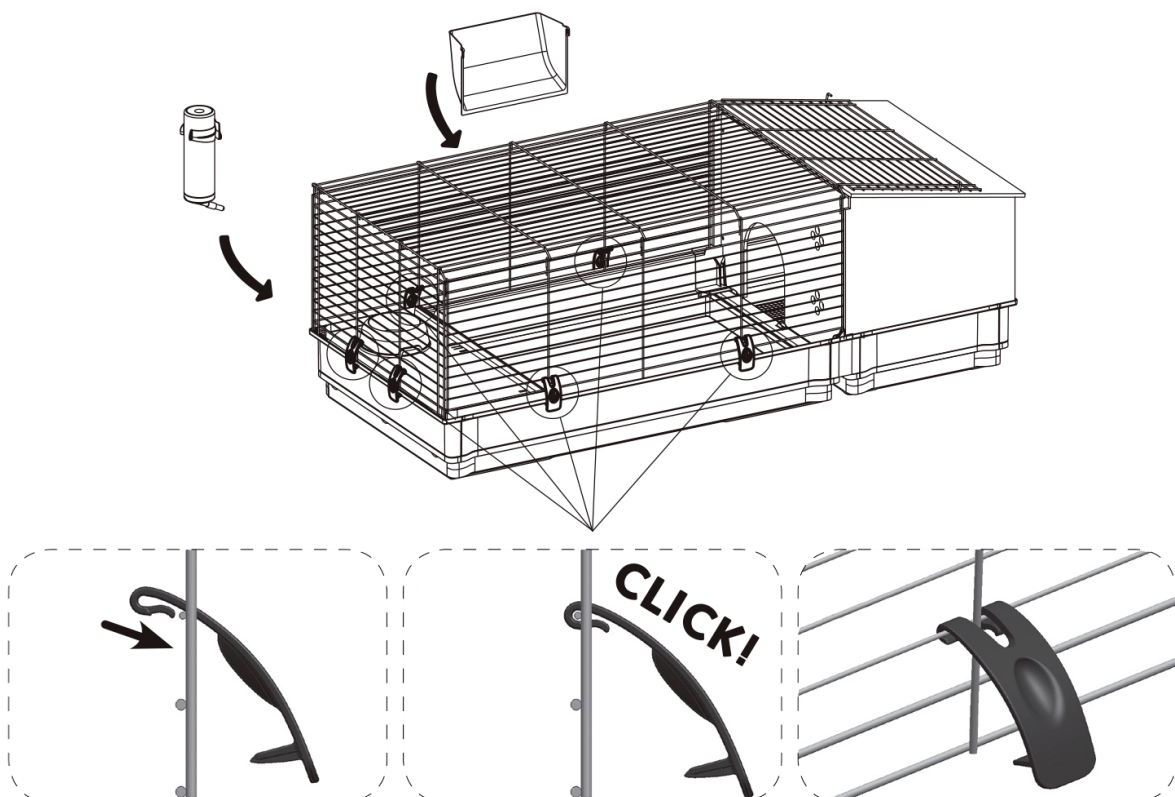
9. Swing the end panel of the 158 wire top out of the way, and place the assembled hutch on the 158HEX plastic bottom, guiding the front lip of hutch down and into the grooves of the plastic base. Secure the hutch to the plastic bottom with the metal clip as shown.



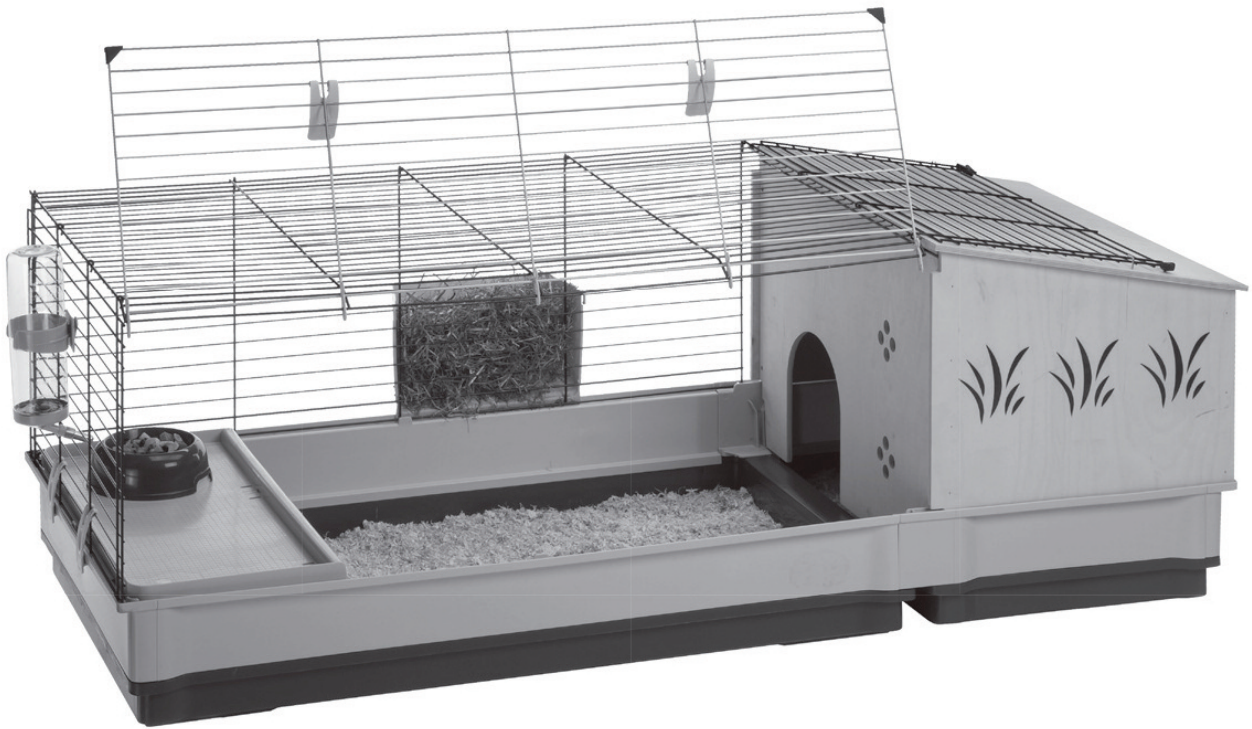
- 10.** Lay the end panel of the 158 wire top on top of the hutch and twist the “L” hooks on the lid of the hutch to secure it in place. Attach the long side door panel. Be sure the corner caps are on the bottom corners of the door before reattaching it to the 158 base unit.



- 11.** Place the plastic clips from the 158 base unit around the outside of the home as shown. Use the clips to secure the wire top to the plastic bottom. Place the food bowl on the elevated feeding platform and reattach the water bottle and hay feeder to the outside of the home.

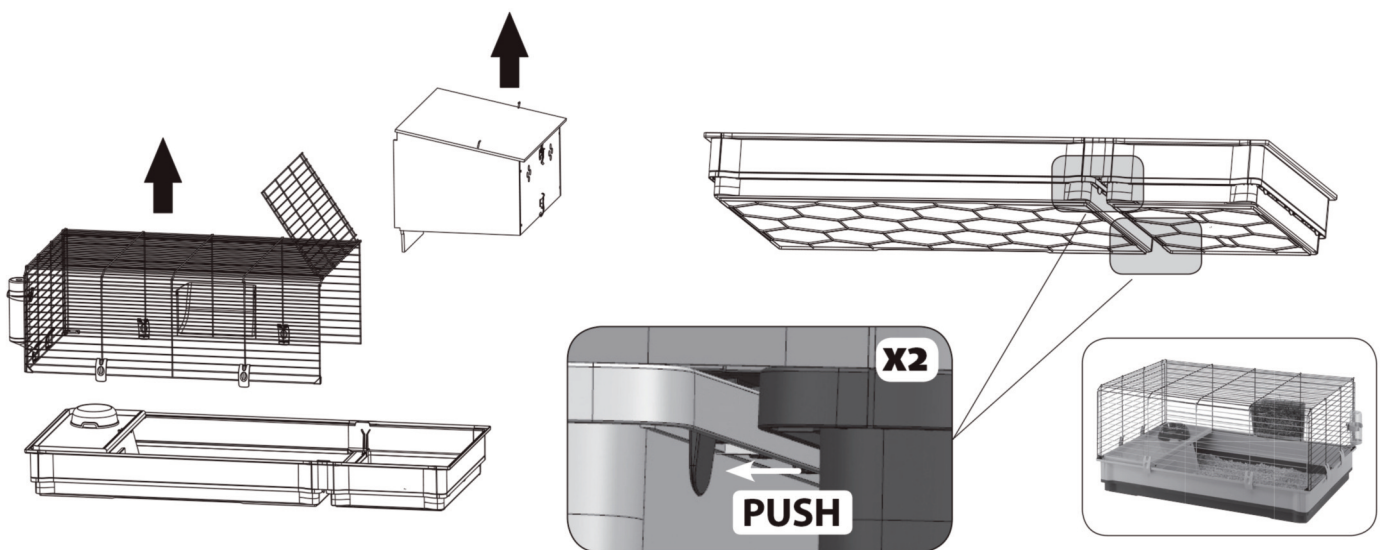


**12.** Furnish with bedding, toys, and accessories as desired.



### To Disassemble

Release the clips around the home and remove the wire tops and hutch from the plastic bottom. Disconnect the plastic bottoms by releasing the tabs underneath. Remove the plastic end from the 158HEX extension and reconnect it to the end of the 158 base unit. Reattach the wire top and accessories.





To clean your Wabbitat Deluxe Rabbit Home, wipe the plastic and wire portions with a damp cloth and mild, pet-safe cleaner. Allow to air dry. Do not expose to direct sunlight for extended periods of time.

**TOLL-FREE SERVICE HELPLINE:** If you have any problems or questions with the assembly of your Wabbitat Deluxe Rabbit Home, call our Service Helpline at: 1-800-428-8560 between 9:00 a.m. and 4:00 p.m. (EST) Monday through Friday.

### LIMITED MANUFACTURER'S WARRANTY

1. For one (1) year from the date of original purchase, MIDWEST Homes For Pets ("MIDWEST") warrants to the purchaser of this pet home that, should it prove defective by reason of improper workmanship and/or material, MIDWEST will repair or replace, at its option, any defective part of the pet home, without charge for the part or for shipping. Replacement parts are warranted for the remainder of the original period.
2. **THIS WARRANTY DOES NOT COVER** defects in the home caused by any animal, any physical abuse to or misuse of the pet home, any damage caused by the original purchaser or any third party, or any defects arising or discovered more than one (1) year from the original retail purchase date.
3. **STEPS TO OBTAIN WARRANTY SERVICE:**
  - A. The purchaser must call MIDWEST's HELPLINE, 800-428-8560, to report the alleged defect to a customer service representative or obtain missing parts.
  - B. The customer service representative will determine if the defect is covered by this warranty and, if it is, will authorize and instruct the purchaser in how to obtain corrective action.
  - C. MIDWEST may require the purchaser to present the sales receipt or other proof of purchase prior to authorizing any return or replacement. No returns or replacements will be permitted without proper authorization. If a return or replacement is authorized, you may be requested to return the item to MIDWEST or to make the item available for pick-up by MIDWEST.
4. **ANY EXPRESS WARRANTY NOT PROVIDED IN THIS WARRANTY DOCUMENT, AND ANY REMEDY FOR BREACH OF CONTRACT THAT, BUT FOR THIS PROVISION, MIGHT ARISE BY IMPLICATION OR OPERATION OF LAW, IS HEREBY EXCLUDED AND DISCLAIMED. THE IMPLIED WARRANTIES OF MERCHANTABILITY AND OF FITNESS FOR ANY PARTICULAR PURPOSE ARE EXPRESSLY LIMITED TO A TERM OF ONE (1) YEAR. SOME STATES DO NOT ALLOW LIMITATIONS ON HOW LONG AN IMPLIED WARRANTY LASTS, SO THE ABOVE LIMITATIONS MAY NOT APPLY TO YOU.**
5. **UNDER NO CIRCUMSTANCES SHALL MIDWEST BE LIABLE TO PURCHASER OR ANY OTHER PERSON FOR ANY SPECIAL, INCIDENTAL OR CONSEQUENTIAL DAMAGES, WHETHER ARISING OUT OF BREACH OF WARRANTY, BREACH OF CONTRACT OR OTHERWISE, SOME STATES DO NOT ALLOW THE EXCLUSION OR LIMITATIONS OF INCIDENTAL OR CONSEQUENTIAL DAMAGES, SO THE ABOVE LIMITATIONS OR EXCLUSION MAY NOT APPLY TO YOU.**
6. This warranty gives you specific legal rights, and you may also have other rights which vary from state to state.

*For a Complete Listing of Products*  
**Small Animal Habitats • Pet Beds**  
**Outdoor Hutches & Coops • Pet Playpens ...**  
*- Come Visit Our Website*

