



PREMIUM
NAIL GRINDER

Operating Instructions for
Premium Nail Grinder

Instrucciones de funcionamiento para el
Pulidor de uñas premium

Mode d'emploi de la lime à griffes électrique
de luxe

© 2015 Wahl Clipper Corporation
Part No. 58414-200
Printed in China

LIMITED WARRANTY

Valid in U.S.A. Only

This warranty valid only for sales in the Continental United States. For sales outside of the Continental United States contact your local distributor for warranty and terms.

If your Wahl product fails to operate satisfactorily within one (1) year from the date of original purchase or receipt as a gift, Wahl will, at our option, repair or replace it and return it to you FREE OF CHARGE. Our warranty does not include wear-out parts, such as sanding bands. Please mail your product prepaid to Wahl Clipper Corporation, Sterling, Illinois 61081, Attention: Service Department, with a note describing the defect and the date of original purchase or receipt as a gift (if in warranty). Products out of warranty will be repaired at our standard repair charges. The warranty is void and no repair or replacement will be made under this warranty or otherwise if:

1. The product is modified in any manner.
2. The product is repaired by anyone other than Wahl Clipper Corporation or Authorized Service Center.
3. The product has been subjected to unreasonable use.

This warranty gives specific legal rights and you may also have other rights, which may vary from state to state. No other written express warranty is given. Any implied warranty including any warranty of merchantability, which may arise from purchase or use, is limited to the one (1) year period provided in this express warranty. Some states may not allow such limitation, so it may not apply to you. No responsibility is assumed for accidental or consequential damages of any type, or for the use of unauthorized attachments. Some states may not allow the exclusion or limitation of incidental or consequential damages, so the limitation or exclusion may not apply to you.

Wahl Clipper Corporation
3001 Locust Street
P.O. Box 578
Sterling, Illinois 61081
Phone: 1.800.PRO.WAHL
www.wahl.com

IMPORTANT SAFEGUARDS

When using an electrical appliance, basic precautions should always be followed, including the following: Read all instructions before using this appliance.

READ ALL INSTRUCTIONS AND SAFEGUARDS BEFORE USING THIS GRINDER.

DANGER

To reduce the risk of death or injury by electric shock:

1. Do not reach for nail grinder if it has fallen into water.
- 2) This appliance can be used by children aged from 14 years and above and persons with reduced physical, sensory or mental capabilities or lack of experience and knowledge if they have been given supervision or instruction, by a person responsible for their safety, concerning the use of the appliance in a safe way and understand the hazards involved. Children shall not play with the appliance. Cleaning and user maintenance shall not be made by children without supervision.
3. Do not place or store nail grinder where it can fall or be pulled into a tub or sink. Do not place in or drop into water or other liquid.

WARNING

To reduce the risk of burns, electrical shock or injury to persons:

1. Close supervision is necessary when nail grinder is used by, on or near children or individuals with certain disabilities.
2. Use this appliance only for its intended use as described in this manual. Do not use attachments not recommended by the manufacturer.
3. Never operate nail grinder if it is not working properly, if it has been dropped or damaged, or dropped into water. Return to an Authorized Service

Center for examination or repair.

4. Never drop or insert any object into any opening.
5. Do not use outdoors or operate where aerosol (spray) or other flammable products are being used or where oxygen is being administered.
6. Do not touch the collet or attachment after use. These may be hot and cause burns to the skin.
7. To disconnect, move the switch to the off, or "O" position, then remove the batteries.
8. Clean the nail grinder's air vents with compressed air on a regular basis. Material may accumulate inside the grinder and cause electrical failure.
9. Always wear safety glasses when using nail grinder. Do not wear loose jewelry or clothing when in use. Keep long hair pulled back out of work area.
10. Do not allow animal to lick or touch the nail grinder during use.
11. To prevent damage to the nail, do not hold the sanding band in one place on nail or apply excessive pressure to the nail while grinding.
12. Make sure attachments are securely in place before use. Before each use, check that the sanding drum is sufficiently expanded to secure the sanding band during use. If sanding band is loose during operation, it may be ejected from grinder and cause injury.
13. **WARNING:** During use, do not place or leave appliance where it may be (1) damaged by an animal or (2) exposed to the weather.

SAVE THESE INSTRUCTIONS

THIS PRODUCT IS INTENDED FOR HOME USE

OPERATING INSTRUCTIONS:

- Using your thumb, apply light to moderate pressure to the animal's pads in order to separate their toes. Hold paw firmly.
- Turn grinder "ON". The "ON/OFF" switch is located on the front of the grinder. With this switch you have the option to grind on low speed to the right "R1" or high speed to the right "R2". Or you may also grind on low speed to the left "L1" or high speed to the left "L2".

*This feature allows this grinder to be used in either the right or the left hand.

To rotate the grinder clockwise, use either L1 or L2.

To rotate the grinder counter clockwise, use either R1 or R2. (If you are right handed you may want to start with either L1 or L2.)

-For best results, start grinding from the bottom of the nail, slowly moving toward the tip. Apply consistent pressure, moving the grinder from side to side of each nail.



-CAUTION: Do not over-grind or apply excessive pressure. (See FIG.1 'Nail Anatomy' for further information to safely grind your pets nails.)

-To avoid tangling of hair on long-haired breed dogs, push hair away from pet's paw before applying the grinder. (Tip: Use a small nylon stocking or sock over the pet's paw and push the nails through a hole at the end to ensure only the nails are exposed.)

-For larger dogs, position the front paw forward in order to grind nails.

-For smaller dogs, hold their paw up and position it below their body. Pay extra caution not to entangle hair.

Accessories Key

- Nail Filer
- Small Sanding Drum with 6 Sanding Bands
- Includes 2 AA Batteries
- Durable Storage Case
- Instruction Book



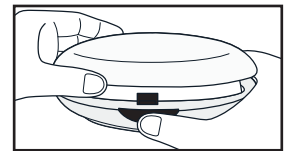
'How To Open/Close the Storage Case

- Lift the lid while holding down the open/close button.
- When closing the storage case, you will hear a 'click' ensuring it is properly closed.

How To Trim

Keep your pet's nails trimmed properly for greater comfort and well being

- Make sure the dog is relaxed and comfortable.
- Have the dog sit and talk to him/her softly to keep them calm.
- Always include a favorite treat during the session and at the end.
- Have a styptic powder or cornstarch readily available in plentiful amount.
- Grasp the foot from the ankle up in the palm of your hand, firmly but gently.
- Position the grinder under the nail.
- Trim off a little of each nail. Be sure to avoid trimming into the 'quick'.
- If bleeding occurs, use styptic powder or cornstarch to stop the bleeding.

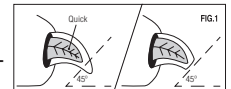


NAIL ANATOMY:

-Before you begin trimming your pet's nails, you will need to identify the 'quick' of the nail. The diagram (FIG.1) will help you identify the basic nail anatomy. The outer nail is hard and has no nerve endings and protects the inner soft part of the nail, known as the 'quick'. The quick has nerve endings, tiny blood vessels and is very sensitive should you accidentally cut or grind into it.

With lighter colored nails, the quick can usually be seen which will make it easier to avoid while grinding. Dark colored nails may not allow you to see where the quick is. While grinding, keep checking the nail and watch for a dark spot in the middle of the grinding area. This spot will indicate the start of the quick and that you should not grind any further.

Please also reference the diagram for the appropriate angle for trimming the nail.

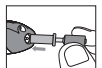


What To Do If Accidentally Hit The Quick:

If by chance you happen to hit the quick of a nail and the nail starts to bleed, don't allow your dog to wrench away from you and run around. Hold him firm and reassure him that you know it hurts, your pet trusts you. You also need to get styptic or corn starch onto the end of the nail. Simply keep the original grasp you had on the paw and press the powder to the end of the nail until the bleeding stops. You may have to keep packing powder for two to three minutes, but the longer you are able to apply steady pressure, the more effectively you will stop the bleeding. Don't be concerned if your dog wants to lick the wound after initial bleeding stops. Do keep him from prancing about for at least fifteen minutes. Bleeding should stop within 15 minutes, if the nail is bleeding freely after 30 minutes of applying pressure and powder call your veterinarian.

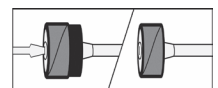
CHANGING ATTACHMENTS:

- Ensure grinder is in the "OFF" or "O" position before changing attachments.
- Choose your grinder attachment.
- Install by pressing the attachment down onto the attachment shaft of the nail grinder. (Located under the guide light.)
- To change the attachment completely, simply pull the current attachment off of the attachment shaft. Choose a new attachment and repeat the steps above.



APPLYING SANDING BANDS TO GRINDING DRUM:

- Select either the 60 or 100 grit sanding band (60 grit medium sanding band for quick and efficient grinding down of your pet's nail; 100 grit fine sanding band for smoothing uneven rough nails.)



-Place the sanding band over the grinding drum until it is in place (please note, you will find it sits loosely over the grinding drum). In order to properly secure its placement, use a screw driver at the top of the grinding drum. Screwing it in a clockwise direction will allow the drum to expand, creating the perfect fit.

MAINTENANCE

- After each use, remove any debris and dust from grinder by using a soft brush.
- To clean housing, use a soft, dry cloth.
- For maximum efficiency, ensure grinding attachments and sanding bands are properly replaced when worn or blunt.
- Periodically examine tool for any wear or damage. See Service and Repair.
- To order replacement accessories, please contact Wahl at 1-800-PRO-WAHL.

HOW TO CHANGE THE BATTERIES

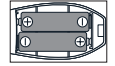
-When the battery is low, the speed of the unit will be slower and the light on the unit may be dim. This means it is time to change your batteries.

-Please make sure the grinder is in the "OFF", or "O", position before changing batteries.

1) The battery door is located at the back side of the unit. Hold the unit with one hand and push down and slide the battery door to the direction of the arrow with the other hand.

2) Place 2 AA Alkaline batteries in the unit, as shown in the diagram

3) Put the battery door back on the unit by matching the hook positions and slide in the opposite direction of the arrow until the door clicks into place.



SERVICE AND REPAIR

-This appliance contains no user-serviceable parts.

-Any servicing should be done by Wahl Service and Repair or by an Authorized Service Center.

-Do not return this product to the store where purchased. If you have problems with your unit, send it prepaid with a note explaining the problem to:

Wahl Clipper Corporation
Attn: Service Department
3001 Locust Street
Sterling, Illinois 61081
1-800-PRO-WAHL
www.wahl.com
Wahl Canada Info.
Wahl Canada
165 Riviera Drive
Markham, Ontario
L3R 5J6 Canada
www.wahlglobal.com/Canada