

AQUARIUM INSTRUCTIONS FOR USE

For Household Use Only

KEEP THESE INSTRUCTIONS FOR FUTURE REFERENCE



Children under the age of 13 should be supervised by an adult with the setup, maintenance and fish care

Model:

AM025

1. Your Aquarium

People of all ages enjoy looking at aquariums. Aside from the belief that an aquarium is beautiful, many also believe owning an aquarium can be relaxing, rewarding and a great conversation piece all at the same time. You will find you will have many enjoyable hours with your new aquarium and fish.

Included in your Aqua Culture Aquarium Kit



Filter includes XS size Cartridge which keeps your filter running efficiently

4. Rinsing Gravel and Decor

Rinse aquarium, filter, stones, plastic plants, and other *decorations under running tap water. Place *gravel in a colander or new bucket and rinse under running tap water until water runs clear. Never clean aquarium, decorations, or filter with household soaps as they can harm your fish.



*Gravel and Decorations not included with aquarium kit

2. Important Instructions

See IMPORTANT SAFETY INSTRUCTIONS SECTION before operating this unit. For household use only. Confirm your tank has not been damaged during shipping before you start the setup process. Completely install aquarium before operating. This unit is powered by 3 AAA batteries or by a 5V Power Adapter, neither are included in this kit. To avoid the unit plug or receptacle from getting wet, position the tank and stand to one side of a wall mounted receptacle to prevent water from dripping onto it. A "Drip Loop" should be made as shown at below.



5. Battery Requirements

WARNING:

- Do not mix old and new batteries.
- Do not mix Alkaline, Standard or Rechargeable Batteries.
- LED light uses 3 AAA batteries.

TIMER SELECTION SWITCH with 3 settings you can select:

1. Continuous On *
2. 2 Hour Duration (2H)
3. 4 Hour Duration (4H)



(Note battery position and orientation)

*It is recommended to use this setting sparingly in order to conserve battery power unless using USB Micro-B connector or optional Power Adapter 5V, AQ51000.

3. Tank Placement

Leave enough space in back of the aquarium to allow easy access to the filter and various electrical cords from the electrical equipment.

Good places for your aquarium

- * On a table or aquarium stand that's capable of bearing the weight of your filled aquarium.
- * In an alcove or area where there are electrical outlets and sufficient room to service the aquarium.

Places to avoid

- Near direct sources of sunlight (e.g. windows), unwanted algae growth may occur.
- Near direct sources of heat or air conditioning (e.g. radiator, forced air vent).
- Around sources of noise (e.g. stereo speakers, TV).
- Drafty areas.



6. LED Light

To turn on LED light press the blue button switch on top of the light.

Continue to press the blue button until desired color is located. 7 dazzling colors to choose, amber, aqua, blue, green, purple, red and white.



Optional (not included) Power Adapter 5V 1 A (model AQ51000) available at most on-line retailers.



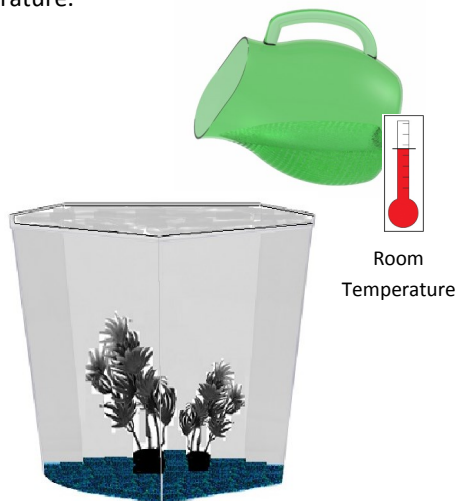
Included with kit:

USB Micro-B cable enables LED light to operate without batteries. Insert Micro-B plug into back of LED light port and opposite end of USB into USB power supply .



7. Adding Water

Fill the aquarium with water to within two inches from the top of the tank. Treat water with store purchased de-chlorinator to remove chlorine and chloramines from tap water that can be harmful to your fish. Allow water temperature in aquarium to reach room temperature.

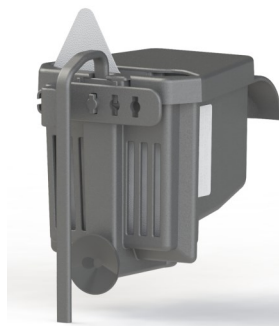


10. Introducing Fish

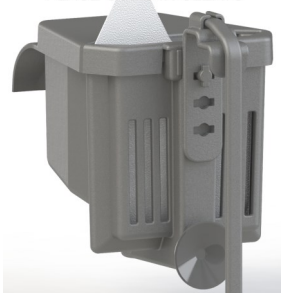
- Float the bag with your fish on the surface of the aquarium for 15 minutes.
- Open the bag containing your new fish, taking care that the bag does not collapse, and add a little aquarium water every two minutes directly to bag.
- Continue this process for 10 minutes, allowing the bag to fill with water.
- Take bag with fish to sink and gently scoop fish out with a net or pour bag of water into net. Now gently place fish into aquarium. Do not add water from fish bag in order to prevent introduction of possible disease or parasites from store water.

8. Installing Power Filter

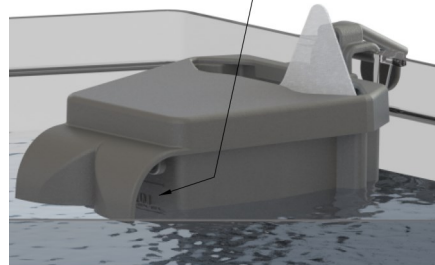
Locate the adjustable hanger bracket inside the filter cartridge compartment. Place the hanger bracket at 90° and align one of the adjustment holes onto the mounting post, rotating it upwards until hanger is vertical. Install the filter inside the aquarium by hanging the filter onto the aquarium rim. The water level of the filled aquarium should be above the line on the water shroud diffuser. Raise or lower the Filter by adjusting the filter hanger. Rotate the Filter hanger 90°, remove it, and replace it in an alternate alignment hole.



ROTATE HOOK VERTICAL
PLACE CORD IN CLEATS



WATER LEVEL
ABOVE LINE
ON FRONT



9. Optional Heater

Select proper sized heater* appropriate for your aquarium size. Read and follow the heater's instructions. Check with your retailer for recommended heater settings. Adjust heater settings as directed. Confirm water temperature with thermometer*. Always use a power strip with surge protector to safeguard your electrical equipment.



*Heater and thermometer not included,
must be purchased separately

11. Ongoing Maintenance

- Perform a 25% water change monthly (more frequently if necessary depending on number of fish and amount of daily feedings), use a vacuum gravel siphon to thoroughly remove any uneaten food and waste buildup.
- Replace Filter Cartridge® every 3 to 4 weeks, depending on the number of fish and amount of daily feeding, to keep filter running efficiently.
- Test pH, ammonia and nitrite weekly using Aquarium water test strips. Performing these tests will allow you to monitor the water quality of your aquarium. If readings are not in the preferred range, perform a partial water change.

LIMITED WARRANTY

KOLLER PRODUCTS, LLC warrants this aquarium product to be free from defects in material and workmanship under normal use and service and according to the provisions as specified in the accompanying assembly and operating instructions, for a period of one year from date of purchase.

This warranty does not cover and KOLLER PRODUCTS, LLC is not liable for the cost of repair or replacement of parts which have been subject to misuse, negligence, accident, improper installation, damage during shipment or handling, normal deterioration due to wear and exposure or defects caused by unauthorized parts or modification.

UNDER NO CIRCUMSTANCES WILL KOLLER PRODUCTS, LLC BE LIABLE FOR ACCIDENTAL OR CONSEQUENTIAL DAMAGES, INCLUDING BUT NOT LIMITED TO LOSS OF PROPERTY OR EQUIPMENT.

Some states do not allow the exclusion or limitation of incidental or consequential damages, or limitation on how long an implied warranty lasts, so the above limitations or exclusions may not apply to you. This warranty gives you the legal rights, which vary from state to state.

Manufactured by Koller Products, LLC
Fenton, MO 63026 USA