

MAXI-JET® PRO
**MULTI-USE
WATER PUMPS**



LIMITED WARRANTY Within two years from the date of original purchase, Marineland Aquarium Products will repair or replace, at its option, any MAXI-JET PRO Multi-Use Water Pump which is deemed defective in workmanship or materials. Please return the unit, together with proof of date of purchase:

**Call (800) 322-1266 for return
authorization and shipping address.**

Damage or injuries resulting from negligence or misuse are not covered by this warranty. Incidental or consequential damages are specifically excluded.*

This warranty gives you specific legal rights. You may also have other rights which vary from state to state.

* Because some states do not allow the exclusion of incidental or consequential damages, this exclusion may not apply to you.

**Questions or Missing Parts:
Call Customer Service at
(800) 322-1266**

(M-F 7:30 am - 5:30 pm Eastern Time)

IMPORTANT SAFEGUARDS

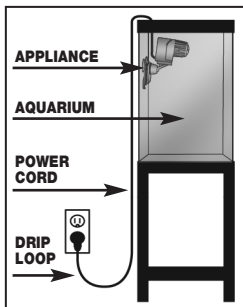
WARNING: To guard against injury, basic safety precautions should be observed, including the following.

READ AND FOLLOW ALL SAFETY INSTRUCTIONS

DANGER: To avoid possible electric shock, special care should be taken since water is employed in the use of aquarium equipment. For each of the following situations, do not attempt repairs by yourself; return the appliance to an authorized service facility for service or discard the appliance.

1. A. If the appliance shows any sign of abnormal water leakage, immediately unplug from the power source. **B.** Carefully examine the appliance after installation. It should not be plugged in if there is water on parts not intended to be wet. **C.** Do not operate any appliance if it has a damaged cord or plug, or if it is malfunctioning or if it is dropped or damaged in any manner. **D.** To avoid the possibility of the appliance plug or receptacle getting wet, position aquarium stand and tank to one side of a wall mounted receptacle to prevent water from dripping onto the receptacle or plug. A "drip loop", shown in the figure at right, should be arranged by the user for each cord connecting an aquarium appliance to a receptacle.

The "drip loop" is that part of the cord below the level of the receptacle or the connector, if an extension cord is used, to prevent water from traveling along the cord and coming in contact with the receptacle. If the plug or receptacle does get wet, DON'T unplug the cord. Disconnect the fuse or circuit breaker that supplies power to the appliance.



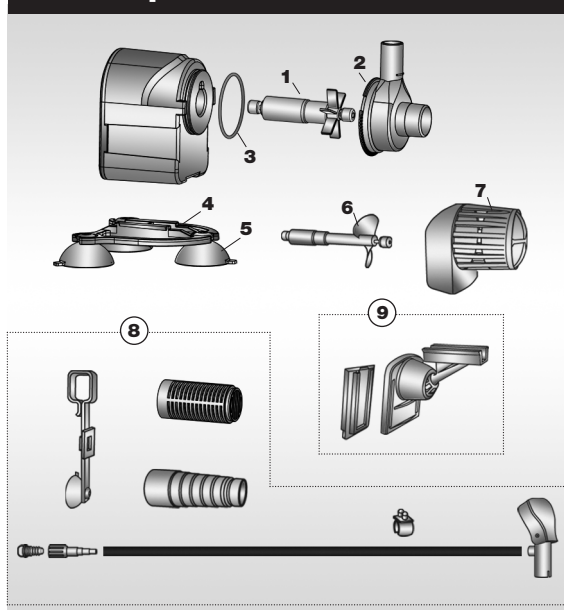
Then unplug and examine for presence of water in the receptacle.

2. This appliance has a polarized plug (one blade wider than the other). As a safety feature, this plug will fit in a polarized outlet only one way. If the plug does not fit fully in the outlet, reverse the plug. If it still does not fit, contact a qualified electrician. Never use with an extension cord unless plug can be fully inserted. Do not attempt to defeat this safety feature. **3.** Close supervision is necessary when any appliance is used by or near children. **4.** To avoid injury, do not contact moving parts or hot parts such as heaters, reflectors, lamp bulbs, etc. **5.** Always unplug an appliance from an outlet when not in use, before putting on or taking off parts, and before cleaning. Never yank cord to pull plug from outlet. Grasp the plug and pull to disconnect.

6. Do not use an appliance for other than intended use. The use of attachments not recommended or sold by the appliance manufacturer may cause an unsafe condition. **7.** Do not install or store the appliance where it will be exposed to the weather or to temperatures below freezing. **8.** Make sure an appliance mounted on a tank is securely installed before operating it. **9.** Read and observe all the important notices on the appliance. **10.** If an extension cord is necessary, a cord with a proper rating should be used. A cord rated for less amperes or watts than the appliance rating may overheat. Care should be taken to arrange the cord so that it will not be tripped over or pulled.

SAVE THESE INSTRUCTIONS

Replacement Parts List



KEY	ITEMS	MODEL NUMBERS			
		MJ400	MJ600	MJ900	MJ1200
1	Impeller	ML90516	ML90513	ML90514	ML90515
2	Impeller Cover	NA			
3	O-ring	ML90524			
4	Mount and Suction Cups	ML90525			
6	Propeller	ML90520	ML90517	ML90518	ML90519
7	Propeller Cover	ML90521		ML90522	
8	Accessory Kit	ML90523			
9	Omni-Directional Mount	ML90526			

WARNING: Always unplug Multi-Use Water Pump when inspecting or disassembling for any reason.

IMPORTANT ADDITIONAL SAFETY INSTRUCTIONS

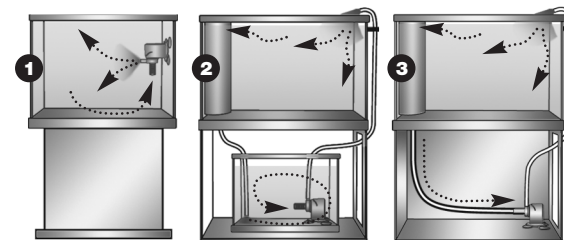
- 1) ALWAYS** check the voltage on the pump label to make sure that it corresponds to the main power supply.
- 2) NEVER** repair or replace the Multi-Use Water Pumps power cord. If it is damaged, replace the entire pump unit.
- 3) NEVER** let the pump run dry.
- 4)** The pump is not a toy.
- 5)** It must NOT be used by children without the supervision of an adult.

Troubleshooting Guidelines

If pump stops working. . .

- Check Impeller/Propeller for obstruction.
- Make sure water level is not too low. Intake should be below water level in both internal and external applications.

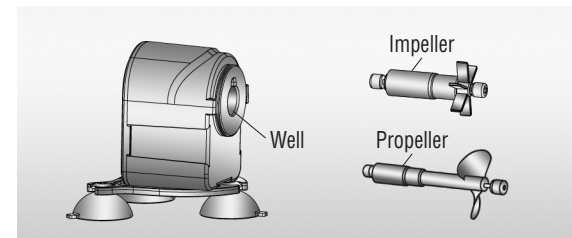
Applications



- 1) Water Circulation Setup
- 2) Sump System Setup
- 3) External Setup

For Optimum Pump Performance:

Clean Impeller / Propeller and well monthly.



PUMP FLOW

MODEL	WATTAGE	AMPS	MAX FLOW GPH	MAX FLOW L/H	MAX HEAD HEIGHT INCHES
400	5	0.1	110	400	33
600	8	0.12	160	600	42
900	10	0.17	230	850	48
1200	20	0.38	295	1100	70

Questions or Missing Parts:
Call Customer Service at
(800) 322-1266
(M-F 7:30 am - 5:30 pm Eastern Time)