

**command**<sup>™</sup>  
PET PRODUCTS

## Extension Placement Guide/Guía de colocación de las extensiones

PG6100 and PG6142 Extension Guide for Pressure Gate Model PG5100 and PG5142

Note: Each PG6100/PG6142 kit contains two extensions

Width Opening	Extensions	What You Need	Placement
29" – 32"	Basic Gate	No extensions	
32" – 34 ½"	1-PG6100/PG6142	Gate + 1 extension	-1 on one end
34 ½" – 37"		Gate + 2 extensions	-1 on each end
37" – 40"	2-PG6100/PG6142	Gate + 3 extensions	-2 on one end; 1 on other end
40" – 42 ½"		Gate + 4 extensions	-3 on one end; 1 on other end
42 ½" – 45"	3-PG6100/PG6142	Gate + 5 extensions	-3 on one end; 2 on other end
45" – 47 ½"		Gate + 6 extensions	-3 on each end

## Guide de positionnement des rallonges

Guides de rallonge PG6100 et PG6142 pour modèles PG5100 et PG5142

Remarque : Chaque ensemble PG6100/PG6142 contient deux rallonges

Largeur d'ouverture	Rallonges	Matériel requis	Positionnement
73,5 à 81,5 cm	Barrière de base	Sans rallonges	
81,5 à 87,6 cm	1-PG6100/PG6142	Barrière + 1 rallonge	-1 à une extrémité
87,6 à 93,9 cm		Barrière + 2 rallonges	-1 à chaque extrémité
93,9 à 101,6 cm	2-PG6100/PG6142	Barrière + 3 rallonges	-2 à une extrémité; 1 à l'autre extrémité
101,6 à 107,9 cm		Barrière + 4 rallonges	-3 à une extrémité; 1 à l'autre extrémité
107,9 à 114,3 cm	3-PG6100/PG6142	Barrière + 5 rallonges	-3 à une extrémité; 2 à l'autre extrémité
114,3 à 120,6 cm		Barrière + 6 rallonges	-3 à chaque extrémité



## USER GUIDE GUIDE D'UTILISATION GUÍA DEL USUARIO

### PRESSURE GATE PG5100 TALL PRESSURE GATE PG5142

Fits openings 29" – 32" • Optional extension kit available  
Pour des ouvertures de 73,5 à 81,5 cm • Rallonge disponible en option  
Para aberturas de 29" a 32" • Hay disponible extensione opcionales

**command**<sup>™</sup>  
PET PRODUCTS

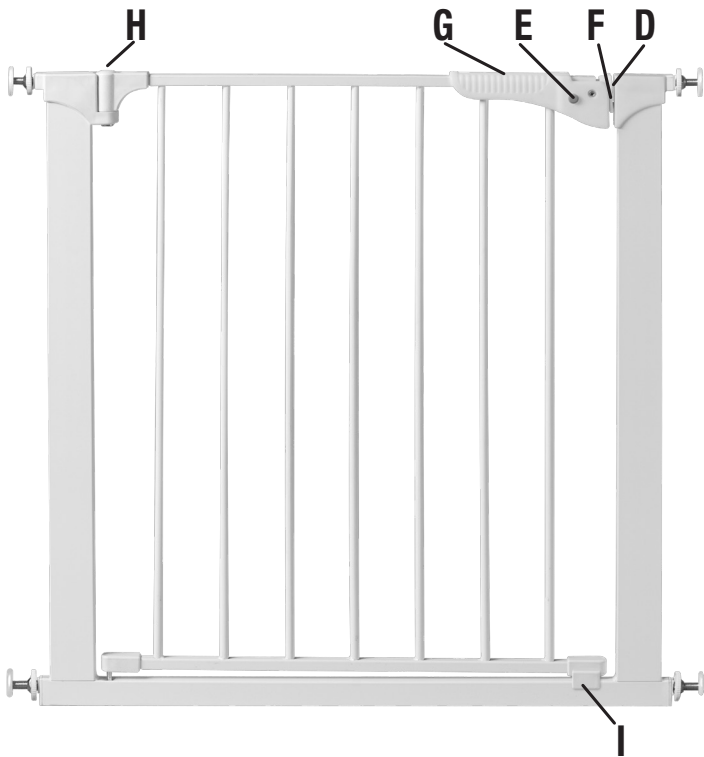
a division of KidCo®

1013 Technology Way, Libertyville, IL 60048  
800.553.5529

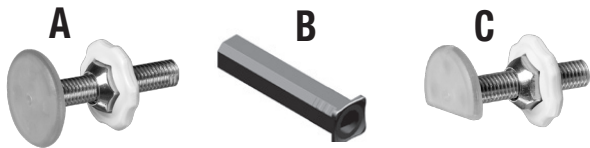
[www.commandpet.com](http://www.commandpet.com)

### Parts list

- A** Top Spindle (2)
- B** Spindle Housing (4)
- C** Bottom Spindle (2)
- D** Pressure Hinge
- E** Button (2)
- F** Pressure Plate
- G** Handle
- H** Hinge
- I** Locator

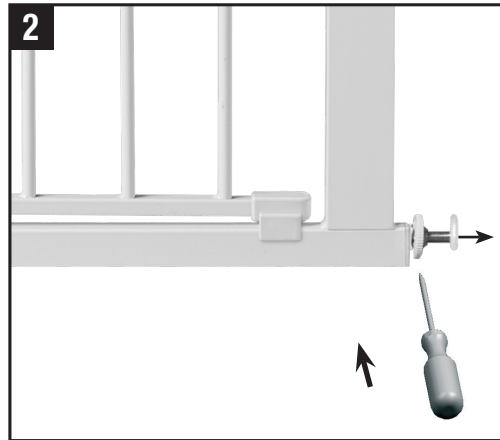


PÁGINA DEJADA EN BLANCO INTENCIONADAMENTE



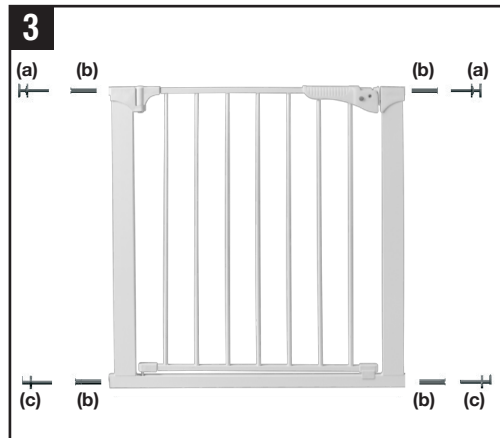
## Installation

**1** The gate must be installed in a structurally sound opening. Never install between two railings or two stair posts. Ensure mounting surface (wall, doorframe, etc.) is strong, rigid and is smooth, clean and grease free. If mounting onto brick, drywall or other surfaces, an optional gate installation kit, wooden board mounted to the surface or additional hardware may be necessary to provide a solid, smooth surface. Measure opening to determine if extensions are needed. Correct width will be reached by adjusting all 4 corner spindles. Each spindle adjusts individually and may be extended to varying lengths (up to 1 3/4" each) to allow for molding, uneven walls, etc. This gate can be used in a closed doorway.



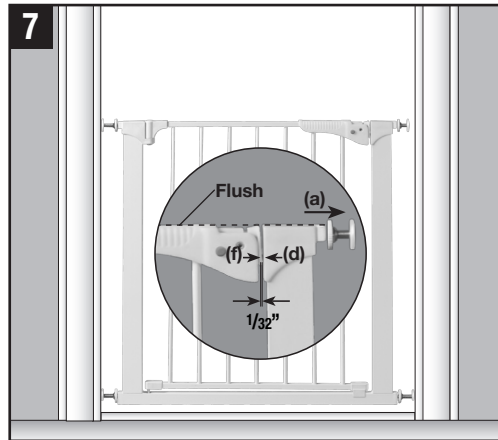
**2 Spindle attachment is different when using optional extensions and when not using extensions.** Spindle housings are not used if square extension tubes are required. If the housings have been inserted, remove with a screwdriver.

**3** Slide top spindles (a) and bottom spindles (c) into spindle housing end (b). Push assembly into gate corners.



PAGE LEFT BLANK INTENTIONALLY

**7** Pull out upper spindle (a) on the handle side until tension is reached and the distance between the pressure plate (f) and pressure hinge (d) is 1/32".



**8** Close handle and check all hardware. Tighten handwheels TOWARD GATE FRAME. If correctly installed gate should be firmly in place. Once opened, the walk-through door should operate easily in either direction.



**9 a)** To Open Gate- Release locking mechanism by pressing buttons (e) in while lifting handle. **BUTTONS MUST ALWAYS BE PRESSED IN WHEN LIFTING HANDLE.** Lift walk through door so hinge is raised and door will swing open in either direction.  
**b)** To Close Gate-Lift walk through door. Align pressure hinge (d) and pressure plate (f). Lower door and press handle (g) down to lock.



**10 Instalación:** KidCo tiene disponibles pivotes Y OPCIONALES (Modelo GY-1) para asistir en la instalación cuando la superficie de montaje tiene un balaustre redondo. Estos ejes se usan en lugar de los que se incluyen con la reja básica. Se pueden pedir en una concesionaria Command de su localidad o directamente de KidCo. Retire la ruedecilla de la tuerca del pivote de la reja, e instálela en la tuerca del pivote en Y antes de instalar el pivote en Y en el extremo de la reja.

## KidCo® Limited Warranty

Your KidCo product is warranted to be free from manufacturing defects for a period of one year from date of purchase under normal non commercial use and in compliance with the operating instructions. This warranty extends only to the original retail purchaser and is only valid when supplied with proof of purchase. KidCo will either repair, or at our option replace, free of charge, any parts necessary to correct defects in material or workmanship during the warranty period. This warranty is complete and exclusive. The warranty expressly disclaims liability for incidental, special and consequential damages of any nature. Any implied warranty arising by operation of law shall be limited in operation to the terms of this warranty. Some states do not allow the exclusion or limitation of incidental or consequential damages or limitations on how long an implied warranty lasts, so the above may not apply to you. This warranty gives you specific legal rights, and you may have other rights which vary from state to state.

### Should Repair Or Parts Be Necessary

Should a repair be needed during the warranty period, ship the gate in the original carton or similar protective container (check any retail store or purchase from UPS) and send freight prepaid (we suggest UPS) to: **KidCo Inc., 1013 Technology Way, Libertyville, IL 60048-5349**. Include a note with your return address, day-time telephone number, and specify what is wrong with the product. Repairs can normally be made within 48 hours after receipt at KidCo. For additional information CALL our customer service department at **(800) 553-5529**.

## Garantie Limitée KidCo®

Votre produit KidCo est garanti contre tout défaut de fabrication pendant une période d'un an à partir de la date d'achat dans des conditions normales d'utilisation non commerciale et conforme au mode d'emploi. Cette garantie est uniquement accordée à l'acheteur d'origine chez un revendeur et elle est uniquement valable pour toute réclamation accompagnée d'un justificatif d'achat. KidCo réparera ou, à sa discrétion, remplacera gratuitement toute pièce nécessaire pour corriger les vices de matériel ou de fabrication durant la période de garantie. Cette garantie est complète et exclusive. Par cette garantie, KidCo rejette expressément toute responsabilité vis-à-vis de dommages accessoires, spéciaux et indirects, quelle qu'en soit la nature. Toute garantie tacite par effet de la loi se limitera aux termes de cette garantie. Certaines provinces n'autorisent pas l'exclusion ou la limitation de dommages accessoires ou indirects en rapport avec la durée d'une garantie tacite, il est possible que ce qui précède ne vous concerne pas. Cette garantie vous accorde des droits légaux spécifiques et il est possible que vous ayez d'autres droits, variables d'une province à l'autre.

### Pour toute réparation ou pièce nécessaire

Si une réparation s'avère nécessaire durant la période de garantie, expédiez la barrière de sécurité dans son carton d'origine ou une boîte de protection similaire (disponible auprès d'un revendeur ou vendue par UPS) et envoyez en fret payé d'avance (UPS suggéré) à: **KidCo Inc., 1013 Technology Way, Libertyville, IL 60048-5349**. Incluez une note mentionnant vos adresse de retour et numéro de téléphone, et décrivez la nature du problème. Les réparations sont normalement effectuées sous 48 heures après réception par KidCo. Pour plus d'informations, REJOIGNEZ notre service clientèle au **(800) 553-5529**.

## Garantía Limitada de KidCo®

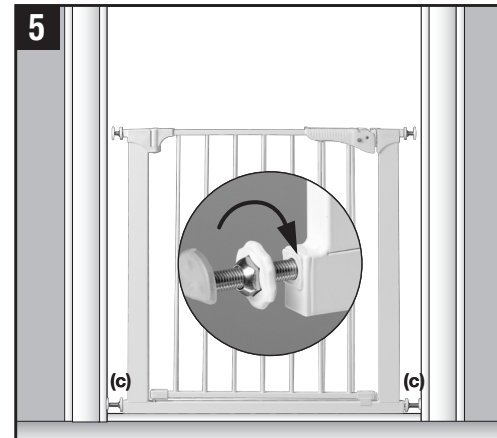
Se garantiza que su producto KidCo estará libre de defectos de fabricación por un período de un año a partir de la fecha de compra bajo condiciones de uso normales y no comerciales y si se cumple con las instrucciones de operación. Esta garantía se extiende sólo al comprador minorista original y sólo es válida cuando se proporciona con un comprobante de compra. KidCo gratuitamente reparará o reemplazará, a su opción, cualquier pieza necesaria para corregir los defectos en los materiales o la mano de obra durante el período de la garantía. Esta garantía es completa y exclusiva. La garantía expresamente renuncia a la responsabilidad por daños incidentales, especiales y resultantes de cualquier naturaleza. Cualquier garantía implícita que surja del ministerio de la ley estará limitada en aplicación a los términos de esta garantía. Algunos estados no permiten la exclusión ni la limitación de daños incidentales o resultantes ni las limitaciones en la duración de una garantía implícita, de manera que lo antedicho puede no aplicar a usted. Esta garantía le confiere derechos legales específicos, y usted puede tener otros derechos dependiendo del estado en donde reside.

### Si se requiere reparación o piezas

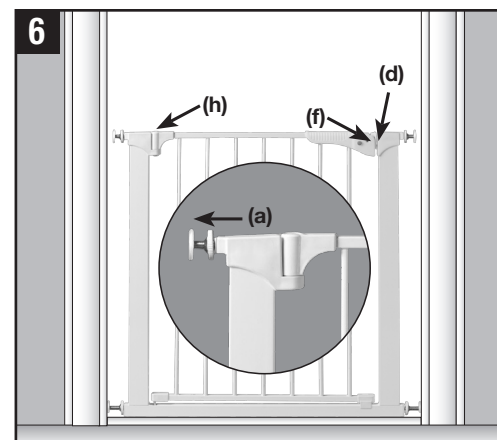
Si se requiere la reparación de la reja durante el período de la garantía, empáquela en su caja original o en un recipiente protector similar (puede conseguir uno en alguna tienda minorista o cómprelo en UPS) y envíela con porte prepago (sugerimos UPS) a: **KidCo Inc., 1013 Technology Way, Libertyville, IL 60048-5349**. Incluya una nota que contenga la dirección de devolución, un número telefónico de contacto durante el día y especifique cuál es el problema con el producto. Normalmente las reparaciones se hacen en el transcurso de 48 horas después de que el producto se recibe en KidCo. Si desea información adicional LLAME a nuestro Departamento de Servicio al Cliente al teléfono **(800) 553-5529**.



**4** Center the gate in opening with bottom rail resting on floor. Gaps on each side should be equal. **IMPORTANT:** The gate must be level and straight up and down, otherwise the gate's door will not function properly.



**5** Pull out the two bottom spindles (c) until they touch the mounting surface and rest on top of floor molding (if applicable). Tighten handwheels TOWARD GATE FRAME as tightly as possible. Each spindle adjusts individually and may be extended to varying lengths to allow for molding, uneven walls, etc.



**6** Close walk through door so pressure plate (f) is aligned with pressure hinge (d). Pull out the top spindle (a) on the hinge side (h) until it touches the mounting surface. Tighten handwheel TOWARD GATE FRAME.

## Important Information

### FOLLOW THESE INSTRUCTIONS CAREFULLY AND KEEP THEM FOR FUTURE REFERENCE

This gate is designed for pets and children from 6 months to 24 months. Since each child's skills develop at different ages, these parameters should be monitored against your child's own development.

## WARNING

- Intended for use with pets and children from 6 months through 24 months
- Check the stability of the gate and tighten all hardware and mountings regularly
- To prevent serious injury or death, securely install gate or enclosure and use according to manufacturer's instructions
- Never use with a child able to climb over or dislodge/open the gate or enclosure
- Never use if gate is less than  $\frac{3}{4}$  of child's height
- Do not use if any part of the gate is broken or missing
- This product will not necessarily prevent all accidents. Never leave child unattended
- Use only spare parts available from Command™
- Never allow child to climb or swing on gate
- Use only with the locking/latching mechanism securely engaged
- Never use gate at top of stairs
- Discontinue use if any part of the gate is damaged
- Never climb over the gate
- Never hang or tie toys, etc, to any part of the gate

## Maintenance

No part of the gate requires lubrication. Clean using warm, soapy water or a damp cloth. Do not use abrasive cleaners or bleach. Once installed the gate should be checked periodically to ensure a safe and secure fit and to maintain proper working order.

CETTE PAGE EST INTENTIONNELLEMENT LAISSÉE EN BLANC