

commandTM
PET PRODUCTS



USER GUIDE
GUIDE D'UTILISATION
GUÍA DEL USUARIO

commandTM
PET PRODUCTS

a division of KidCo®
1013 Technology Way, Libertyville, IL 60048
800.553.5529

www.commandpet.com

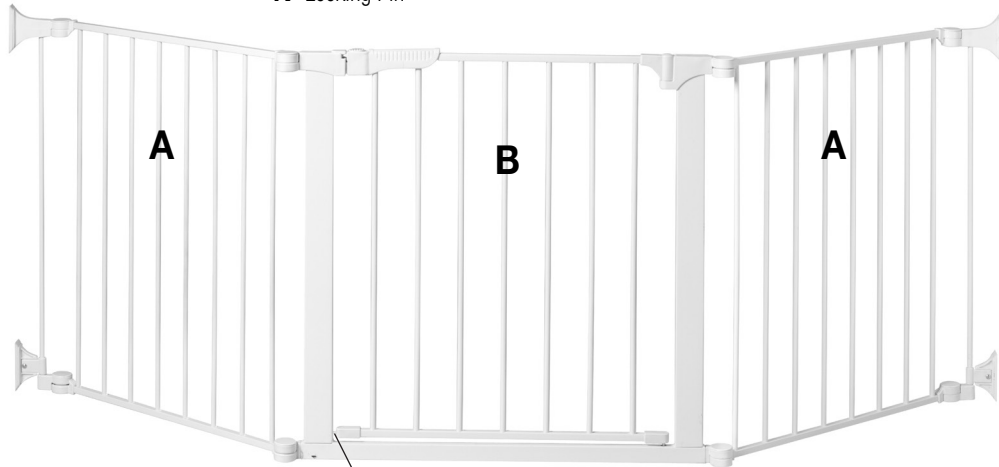
CUSTOM FIT GATE PG5300

Fits openings 84" • Optional 24" extension available for larger areas
Barrière adaptée à des ouvertures de 213 cm • Rallonge de 60,9 cm
disponible en option pour les grandes surfaces

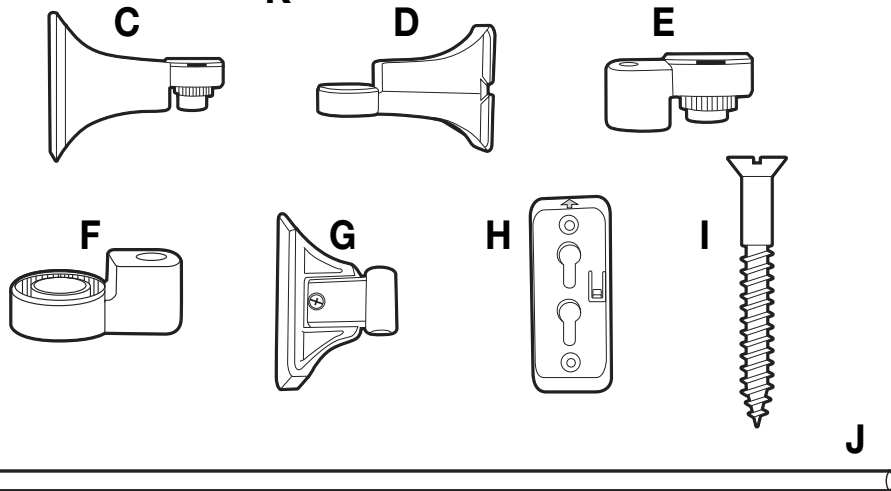
Para aberturas de 84" • Hay disponible extension opcional
de 24" para áreas más grandes

Parts list

- A** 24" Section (2)
- B** 30" Walk-Through Door Section
- C** Upper Post Wall Bracket
- D** Upper Receiver Wall Bracket
- E** Lower Post Wall Bracket
- F** Lower Receiver Wall Bracket
- G** Sliding Wall Bracket Assembly (2)
- H** Wall Plate (4-assembled to parts C, D, and G)
- I** Wood Screw (8) (1 3/8")
- J** Wall Mount Bar (2)
- K** Locking Pin



PÁGINA DEJADA EN BLANCO INTENCIONADAMENTE



Assembly

1 To connect two sections, place hinge posts over the center of the next section's hinge receivers and press down until a click is heard. Continue adding more sections the same way. Optional 24" sections are available for purchase for larger areas or to construct a free standing enclosure.

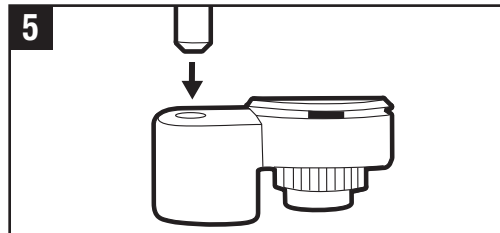
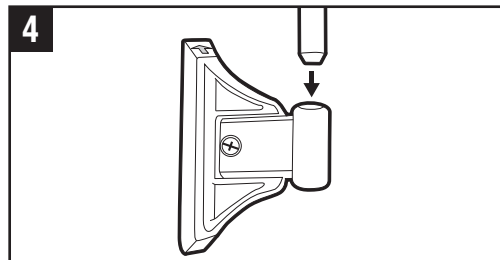
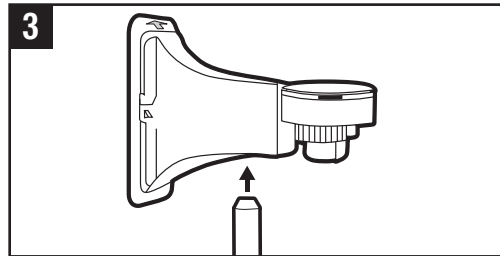
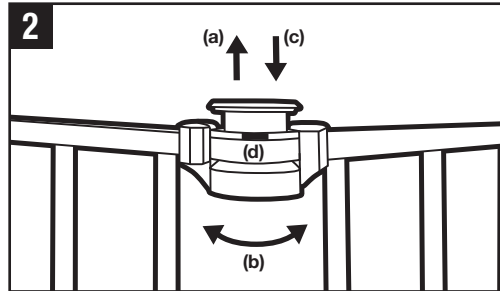
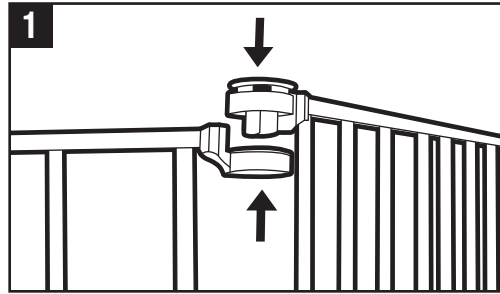
NOTE: The walk through door section can be positioned anywhere within the layout of the gate. For the auto close door feature to work properly the entire gate must be on a level surface, otherwise the door may have to be manually pushed shut.

2 Once all sections have been assembled lift all locking caps into the raised unlocked position (a) and adjust the angle of each section until desired configuration is achieved (b). Push down on all locking caps (c). If locking cap is difficult to lift, gently rotate sections to relieve pressure and/or carefully insert a coin or slotted screwdriver in notch (d) between cap and housing, and push up.

3 Insert wall mount bar into upper post bar bracket. The wall plate is already attached to the upper post bar bracket.

4 Insert bar into sliding wall bracket assembly with locking tabs lined up on right side and arrows facing up.

5 Insert bar into lower post bar housing.



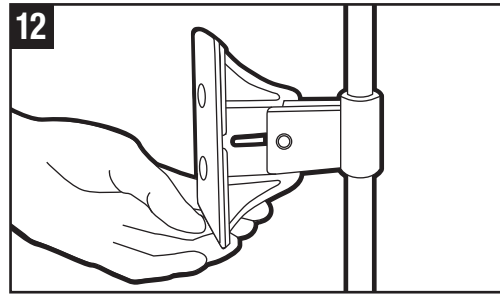
PAGE LEFT BLANK INTENTIONALLY

Installation

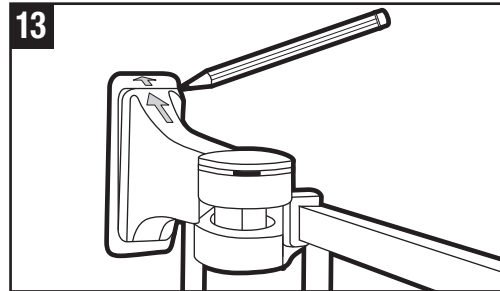
NOTE: Move the Custom Fit Gate to desired location. Sections may need to be adjusted again for proper fit.

12 Lift locking caps and rotate upper and lower wall brackets until flush against mounting surface and lower bar housing is aligned with the upper bracket assembly.

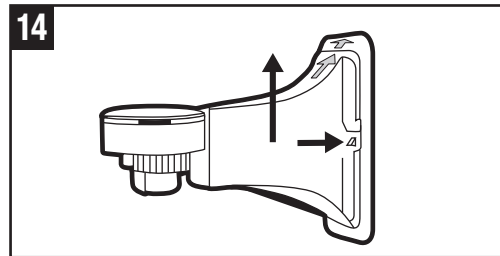
NOTE: Sliding wall bracket assembly is adjustable for uneven walls and should be installed as low as possible.



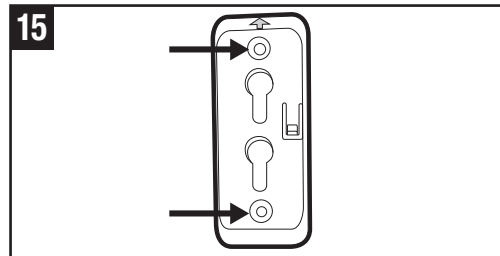
13 With a pencil, lightly outline brackets on mounting surface.



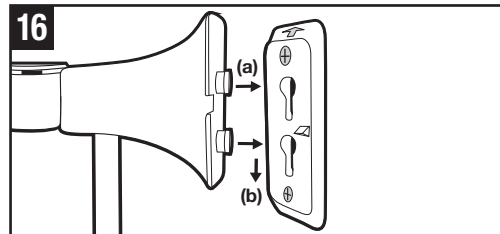
14 Remove wall plates from brackets by pressing locking tabs and sliding up.



15 Hold one wall plate with arrow facing up inside pencil outline and install using two wood screws. Repeat for all other wall plates. **NOTE:** Screws provided are for mounting directly into wood. If mounting into brick, drywall or other surfaces, use appropriate hardware.



16 Attach gate to wall plates by aligning arrows and inserting round tabs into wall plates (a). Slide down to lock (b). Tighten bolts on sliding wall brackets. Gate should now be properly installed.



Important Information

FOLLOW THESE INSTRUCTIONS CAREFULLY AND KEEP THEM FOR FUTURE REFERENCE

This gate is designed for pets and children from 6 months to 24 months. Since each child's skills develop at different ages, these parameters should be monitored against your child's own development.

WARNING

- Intended for use with pets and children from 6 months through 24 months
- Check the stability of the gate and tighten all hardware and mountings regularly
- To prevent serious injury or death, securely install gate or enclosure and use according to manufacturer's instructions
- Install according to the manufacturer's instructions
- Never use with a child able to climb over or dislodge/open the gate or enclosure
- Never use if gate is less than $\frac{3}{4}$ of child's height
- Do not use if any part of the gate is broken or missing
- This product will not necessarily prevent all accidents. Never leave child unattended
- Use only spare parts available from Command™
- Never allow child to climb or swing on gate
- Use only with the locking/latching mechanism securely engaged
- Never use gate at top of stairs
- Discontinue use if any part of the gate is damaged
- Never climb over the gate
- Never hang or tie toys, etc, to any part of the gate

Maintenance

No part of the gate requires lubrication. Clean using warm, soapy water or a damp cloth. Do not use abrasive cleaners or bleach. Once installed the gate should be checked periodically to ensure a safe and secure fit and to maintain proper working order.

CETTE PAGE EST INTENTIONNELLEMENT LAISSÉE EN BLANC