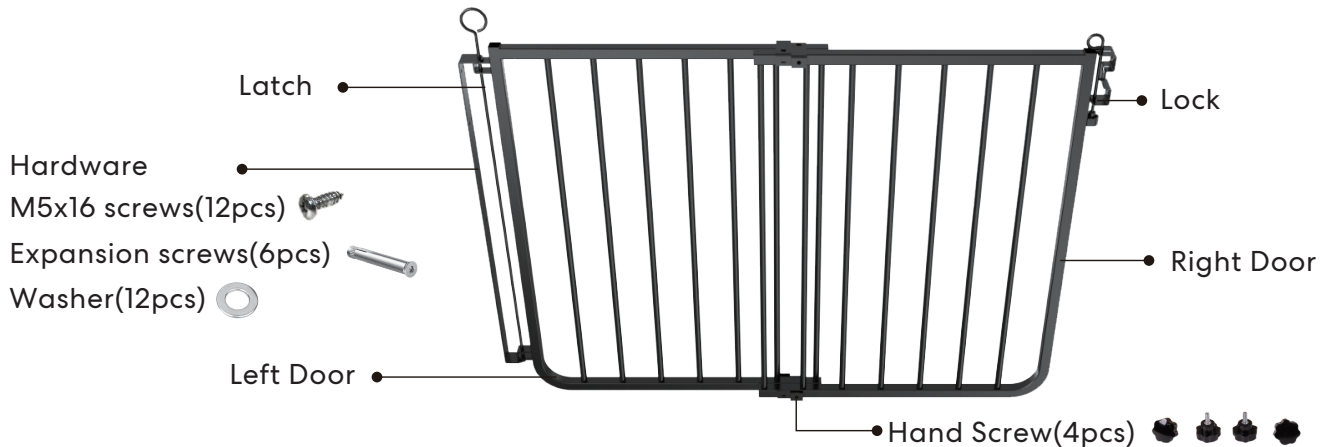
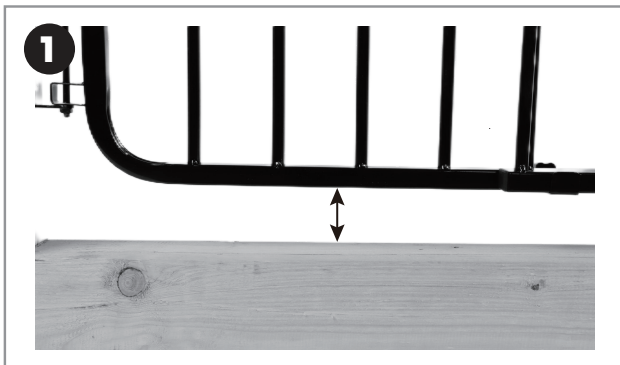


Assembly Instructions



How to install the gate



STEP 1.

Recommended gate to be 2.5in from the floor.

STEP 2.

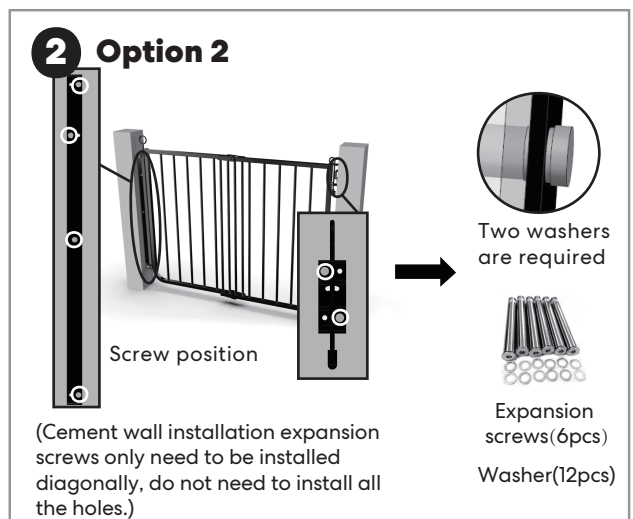
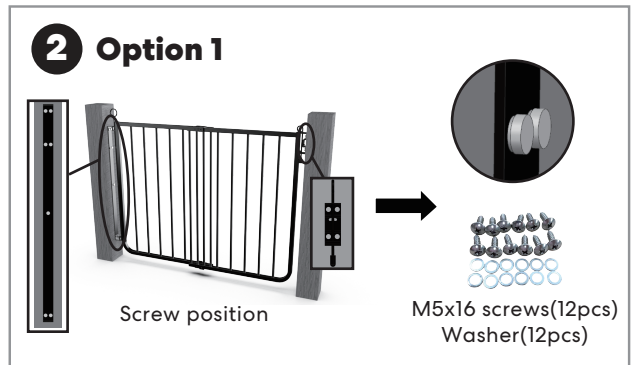
Option 1. Mounting on a Wood Frame

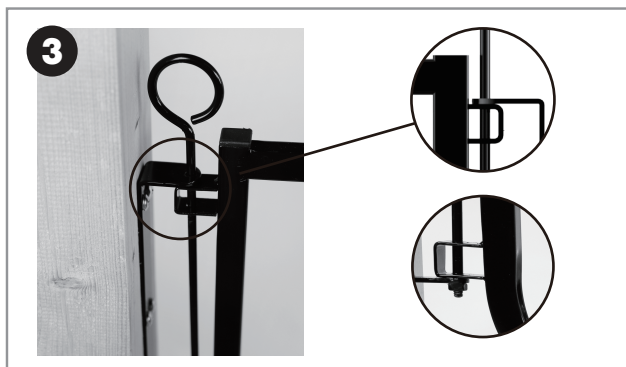
Use M5x16 screws and washers.

Option 2. Mounting on a Concrete wall

Use an electric drill to drill into the cement wall to make a hole.

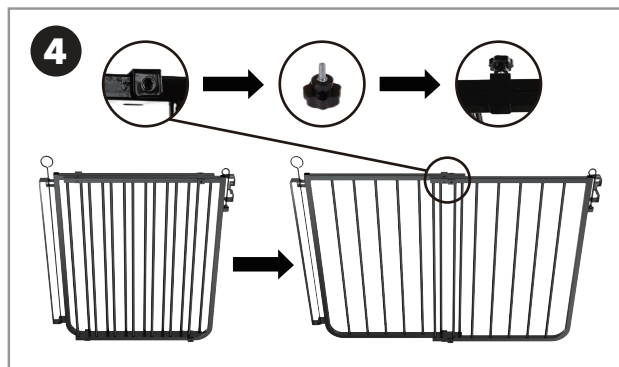
Then insert the expansion screws in the wall and tighten the screw.





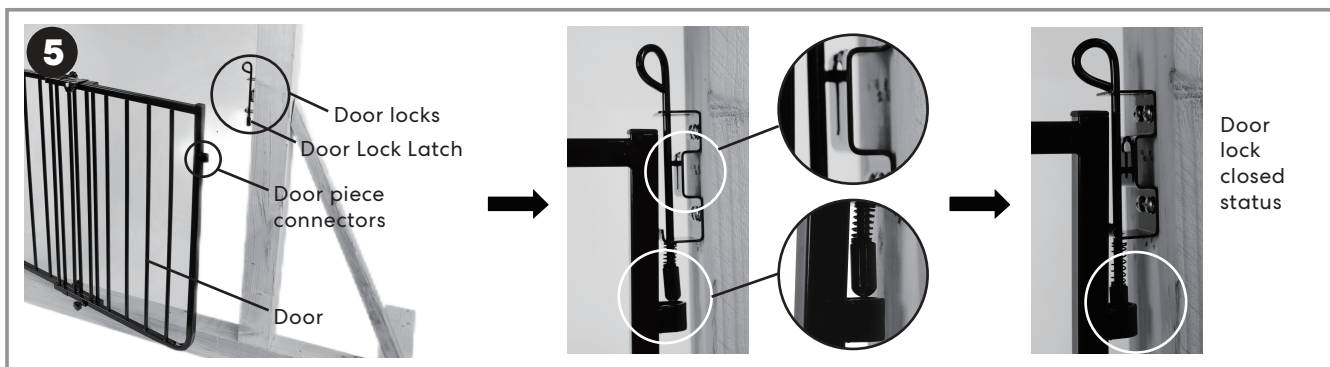
STEP 3.

Insert the latch to connect the door to the door panel fastener.



STEP 4.

Adjust the dog safety gate to the desired position. Then use handscrew to tighten to the desired length.



STEP 5.

When installing the door lock, to ensure alignment of the pin into the locking hole, install the door lock with pin in the open position and align it at about 2mm above the lock on the door. So that when the door lock pin is in lock position the pin will be in the hold on the door. Door lock pin buckle to the top with the hole in the door to keep a little distance to ensure that does not interfere with the door open, and then tighten the self-tapping screws.

Warnings / Cautions

FOR PETS ONLY. NOT FOR USE WITH CHILDREN.

Never use at top of stairs.

Never use as a barrier to a pool.

Install as directed.

Check gate regularly to ensure tightness.

Stop using gate if any parts become damaged or broken.

Questions

Questions? Call our friendly customer service anytime.

We're here 24/7 at 1.800.672.4399



frisco
by **chewy**