

Table of Contents

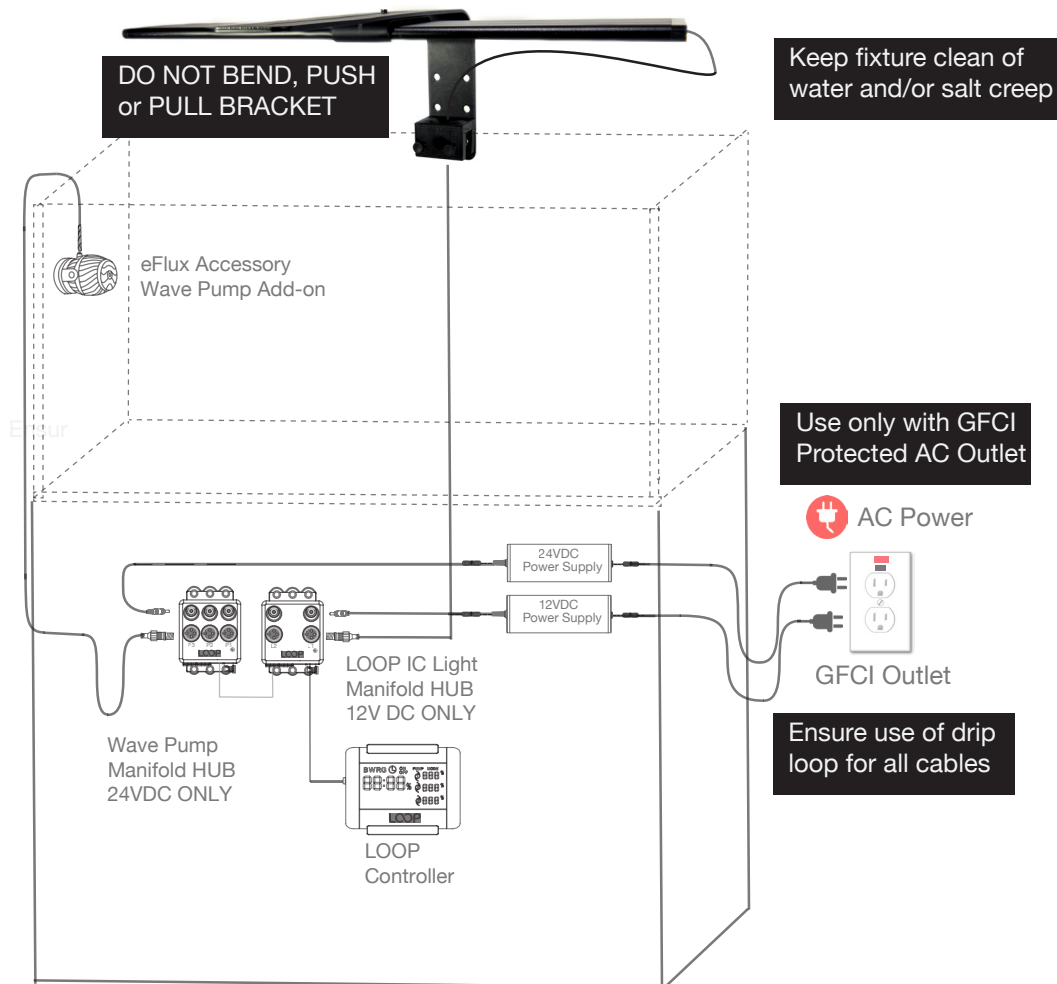
Safety Instructions & Warnings	1
What's Included & Installation	2
Orbit Adjustable Arm Installation	3
Warranty & Safety Warnings	4

Safety Instructions and Warnings

Thank You!
For purchasing our tank mount bracket,
Please read all instructions.

IMPORTANT: Please read all safety warnings.

- Before installation, ensure you have all of the components included with the adjustable tank mount bracket. If you're missing any parts, please contact us at www.current-usa.com.
- This tank mount arm bracket is designed to only fit aquariums up to 1.5" thick or with a 1.5" frame and will only work with Current-USA Orbit Marine IC, Orbit Marine IC PRO, Orbit Marine LED, Satellite Plus Satellite Plus PRO and Orbit Marine PRO LED fixtures (visit our website for Orbit Marine PRO instructions).
- Use one arm bracket for 18", 24" & 36" fixtures, for 48" & 72" fixtures, two arm brackets are required*.
- Use CAUTION when installing and using arm bracket. DO NOT PUSH, PULL or BEND bracket while on tank. Doing so can cause the tank to crack.
- ALWAYS UNPLUG LIGHT and disconnect from power when removing from tank.
- ALWAYS disconnect from power and remove light for cleaning and/or maintenance.

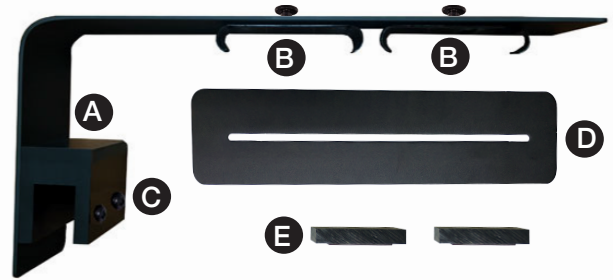


SAVE THESE INSTRUCTIONS

What's Included

Each Orbit Adjustable Tank Mount Kit includes:

Item	Description	Quantity
A	Aluminum Arm w/Bracket (pre-assembled)	1
B	Light Fixture Clip Turn Nut (pre-installed)	2
C	Bracket Attachment Screws (pre-installed)	4
D	Aluminum Extension Bracket	1
E	Aquarium Tank Shim Spacers	2



Installation - READ SAFETY WARNINGS BEFORE INSTALLATION

Step 1. Remove sliding docking mounts from fixture by pulling the mounts outwards (it can take some pull.) Save docking mounts for future use, do not discard.

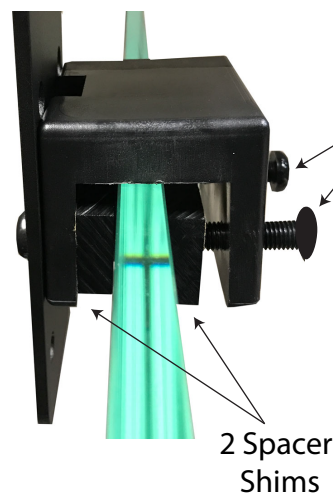
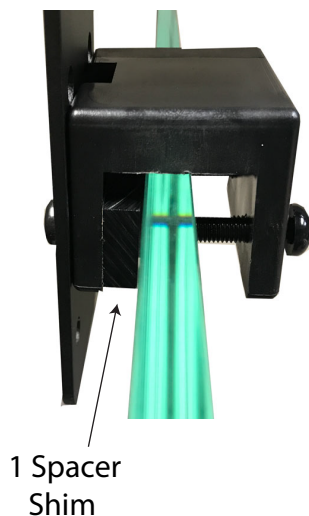
Step 2. Determine location on tank where the tank arm bracket will be installed. Clean glass of any algae or debris before installation.

Step 3. Determine the height to mount and suspend fixture over aquarium.
 Hole Set 1 (Bottom) = Suspends fixture ~5" over tank
 Hole Set 2 (Middle) = Suspends fixture ~6" over tank
 Hole Set 3 (Top) = Suspends fixture ~7" over tank

Step 4. If the mounting height needs to be changed, unscrew and loosen the outside tank arm mount screws using a phillips head screwdriver. Adjust bracket to appropriate height and re-install screws.

Adjust & tighten outer bracket screws

Step 5. Place tank arm bracket in location and hand tighten the inside tank arm mount screws to fasten the arm bracket to the back wall of aquarium. If a gap is present, use included shim spacers by positioning them level to the bottom of tank arm bracket and attaching to glass using 3M adhesive tape on each shim. In most applications, only 1 shim is required.



Adjust & tighten inner bracket screws

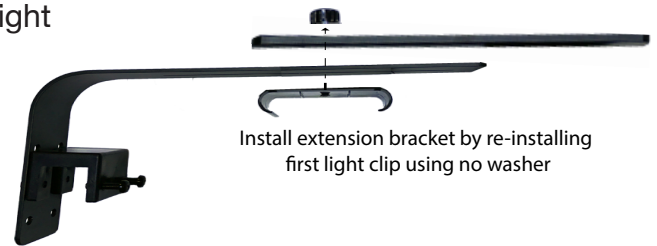
NOTE:

Normally, 1 shim spacer is required for rimless aquariums, 2 Shim Spacers are recommended for thinner glass aquariums using wide tank support frames.

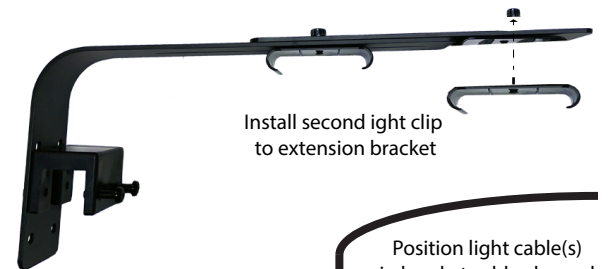
Step 6. If using extension bracket, remove both light clips from arm by loosening top turn nuts and removing washers.



Step 7. Place extension bracket over arm and re-install first light clip using no washer between brackets and tighten top turn nut.

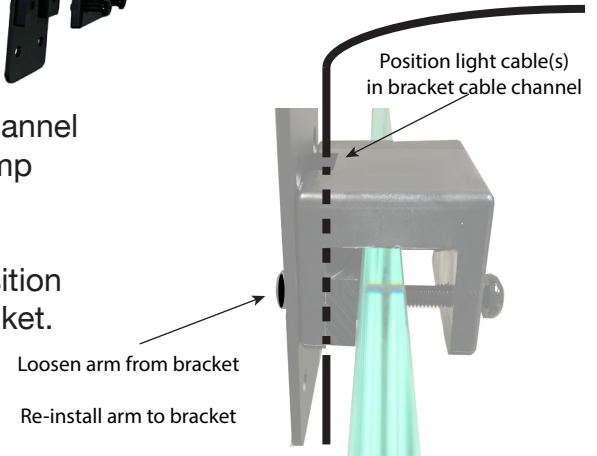


Step 8. Re-install second light clip to the extension bracket and tighten top turn nut when adjusted into place.

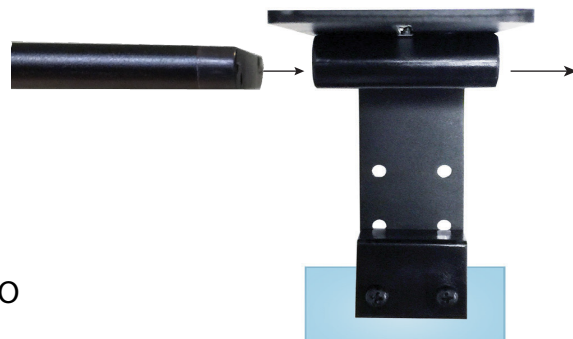


Step 9. The wide tank mount bracket features a built-in cable channel on the bracket and can be used for lighting or wave pump cables.

To organize lighting cable, loosen arm from bracket, position light cable(s) in cable channel, and re-attach arm to bracket.



Step 10. Slide light fixture(s) into clip(s) and position fixture(s) to achieve the desired light spread over the aquascape.



Note: Visit our website www.current-usa.com for additional installation instructions and videos including instructions for use with Orbit Marine PRO

Orbit Adjustable Tank Mount Bracket

Safety Warnings and Warranty

IMPORTANT WARNINGS | SAVE THESE INSTRUCTIONS

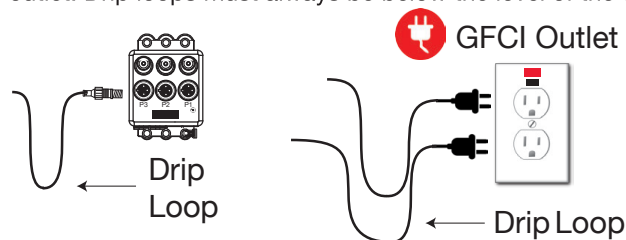
This is NOT a page of legalese. It contains important safety information that you should read and save for future reference. Remember you can always quickly access instructions for all our products at www.current-usa.com.

- Never attempt repairs yourself; return the appliance to an authorized service facility for service or discard the appliance.
- Carefully examine the fixture after installation and BEFORE you plug it into the GFCI wall outlet. Be sure there is no water on any part of the light fixture or the timer.
- Never plug in a wet cord. If a plugged in unit or socket does get wet, DON'T touch it. Instead, promptly disconnect the fuse or circuit breaker that supplies power to the fixture. Then, you may unplug the fixture and examine for the presence of water.
- Never operate a fixture that is damaged or malfunctioning, discontinue use immediately and return the appliance to an authorized service facility.
- Close supervision is necessary when any appliance is used by or near children.
- Always unplug the fixture when not in use, before putting on or taking off parts, and before cleaning. Never pull the cord to unplug from the GFCI.
- Do not use the fixture for anything other than intended use. The use of attachments not recommended or sold by the fixture manufacturer may cause an unsafe condition and will void your warranty.
- Do not install or store the fixture where it will be exposed to the weather or to temperatures below 0° Celsius or 32° Fahrenheit.
- Do not operate at temperatures above 50° Celsius or 122° Fahrenheit.
- Ensure the fixture is securely installed before supplying power to the unit.
- Read and observe all the important notices and warnings on the fixture and power cord. DO NOT REMOVE THE WARNING LABEL.
- If an extension cord is necessary, a cord with a rating at least 15 amperes should be used. A cord rated for less amperes or watts than the fixture rating may overheat. Care should be taken to arrange the cord so that it will not be tripped over or pulled.
- Do not look directly into the LEDs.
- **This tank mount arm bracket is designed to fit rimmed aquariums with a frame up to 1" or rimless with glass up to 1" thick only.**
- **Use one adjustable tank arm bracket for both 18" and 24" fixtures. When using 36", 48" or 72" fixtures, two brackets must be used.**
- Disconnect from power when adjusting fixture in any way.
- Disconnect from power and remove fixture from service whenever performing any cleaning and/or maintenance.

CAUTION - DO NOT BEND, PULL, PUSH or force the bracket in anyway once installed on the aquarium. Doing so may crack the glass panel. Use extreme caution when adjusting the arms.

Important Warnings | Drip Loops

Drip Loops should always be used to help prevent water from traveling along the cord and coming into contact with an electrical outlet. Drip loops must always be below the level of the outlet.



Current-USA One Year Limited Warranty

This product **MUST** be purchased from an authorized Current-USA reseller. Visit our website for a list of unauthorized resellers. Current USA, Inc. warrants this product against defects in materials and workmanship for **ONE (1) YEAR** from the date of original retail purchase and is none transferable.

Warranty on all Products, including Aquariums, is limited to replacement of the product and does not cover fish loss, personal injury, property loss or direct, incidental or consequential damage arising from the use of this product.

Note: Current-USA, Inc. One-Year Limited Warranty does not cover damage caused by the following: improper installation, saltwater corrosion, electrical surges, or modifications.

If you discover a defect, please see your retail store or point of purchase. Current USA, Inc. will, at its option, repair or replace the product at no charge to you, provided you return it during the warranty period. A copy of the bill of sale is required as proof of original purchase date in the event the product needs repairs within the warranty period. Please see your dealer for return options and warranty replacement parts. This warranty applies only to products by or for Current USA, Inc. that can be identified by trade name, or logo affixed to them. Current-USA, Inc. does not warrant any products that are not Current-USA, Inc..

This warranty does not apply if the product has been damaged by accident, abuse, misuse or misapplication or if the product has been modified without the written permission of Current-USA, Inc.; or if any Current-USA, Inc. logos have been removed or defaced.

THE WARRANTY AND REMEDIES SET FORTH ABOVE ARE EXCLUSIVE AND IN LIEU OF ALL OTHERS, WHETHER ORAL OR WRITTEN, EXPRESSED OR IMPLIED CURRENT USA, INC. SPECIFICALLY DISCLAIMS ANY AND ALL IMPLIED WARRANTIES INCLUDING BUT NOT LIMITED TO LOST PROFITS, DOWNTIME, GOODWILL, DAMAGE TO OR REPLACEMENT OF EQUIPMENT AND PROPERTY, AND ANY COSTS OF RECOVERING ANIMALS, PLANTS, TANKS OR OTHER AQUARIUM RELATED ITEMS AND/OR EQUIPMENT. CURRENT USA, INC. IS NOT RESPONSIBLE FOR SPECIAL, INCIDENTAL, OR CONSEQUENTIAL DAMAGES RESULTING FROM ANY BREACH OF WARRANTY, OR REPLACEMENT OF EQUIPMENT OR PROPERTY, OR ANY COSTS OF RECOVERING OR REPRODUCING ANY EQUIPMENT, ANIMALS OR PLANTS USED OR GROWN WITH CURRENT USA, INC. PRODUCTS. Some jurisdictions do not allow the exclusion or limitation of incidental or consequential damages or exclusions of implied warranties, so the above limitations or exclusions may not apply to you. This warranty gives you specific legal rights, and you may also have other rights that vary from jurisdiction to jurisdiction.