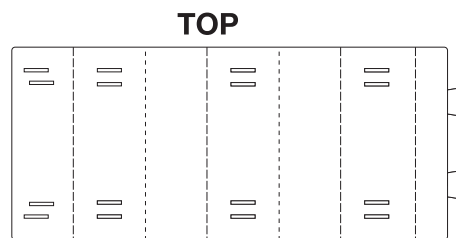
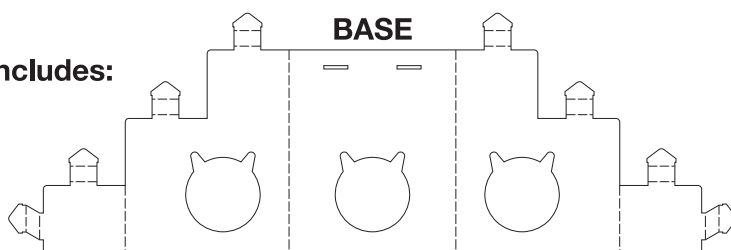
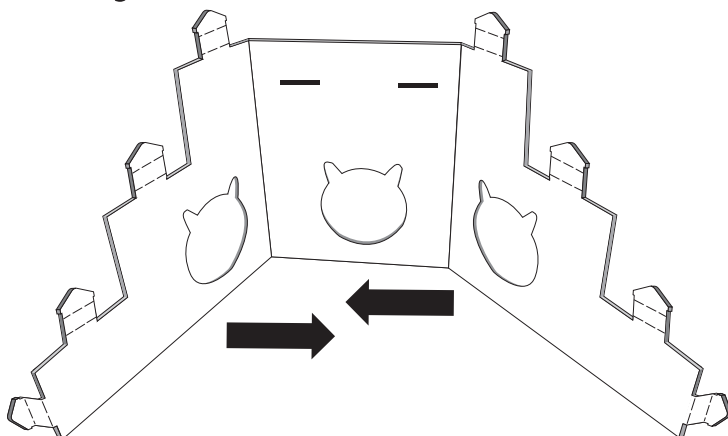


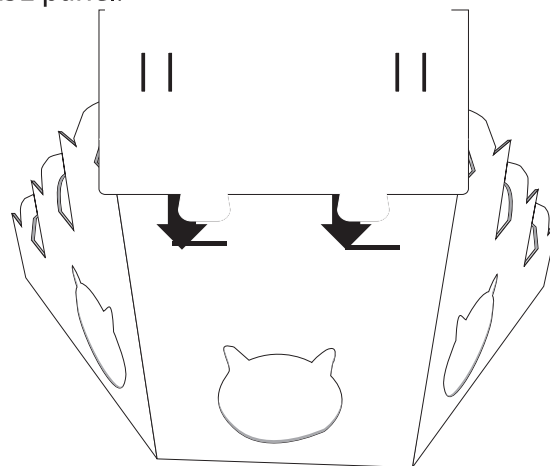
**Stairs Kit Includes:**  
**1 BASE**  
**1 TOP**



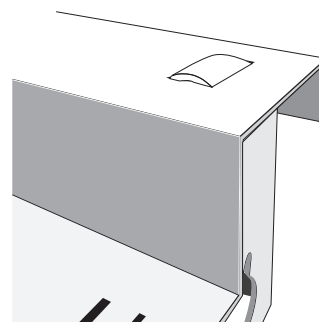
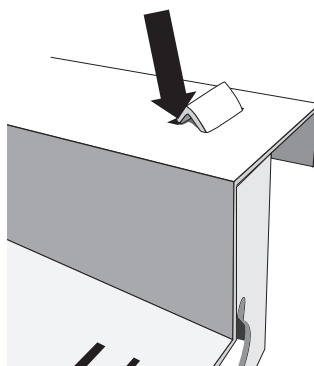
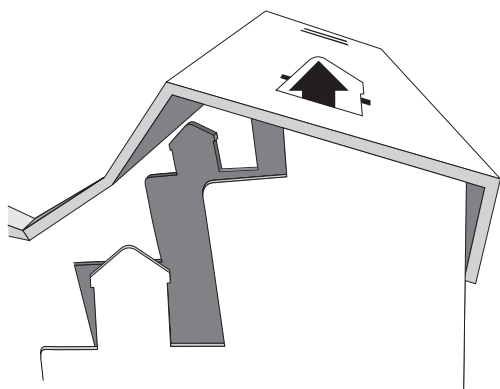
1. Fold both sides of the BASE inward along the creases.



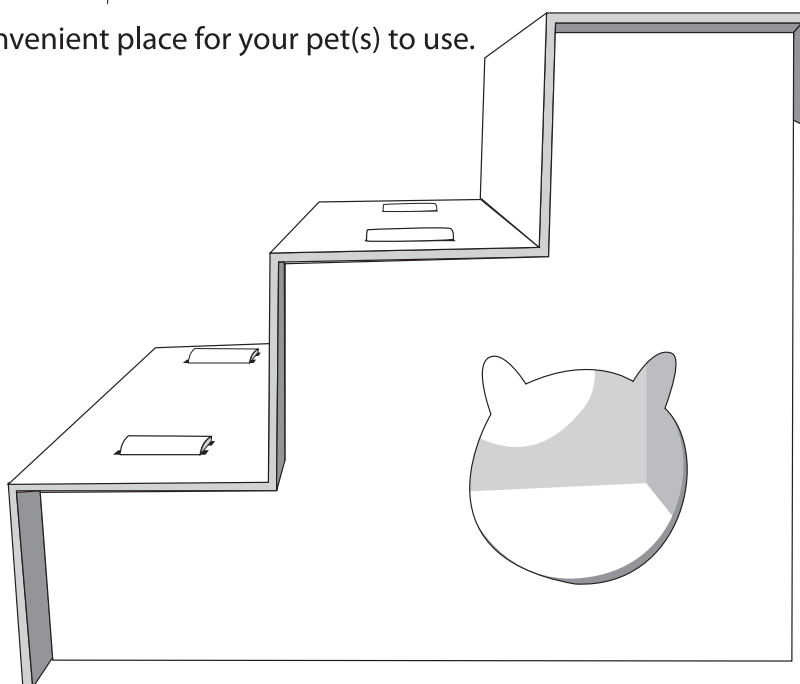
2. Insert the TABS of the TOP panel into the SLOTS of the BASE panel.



3. Insert TABS on the side panels of the Base up through the Outside SLOT of the top, then down through the Inside SLOT. Repeat step 3 until all the steps are firmly attached to the base.



4. Place stairs in a convenient place for your pet(s) to use.



Maximum weight limit 25 lbs.