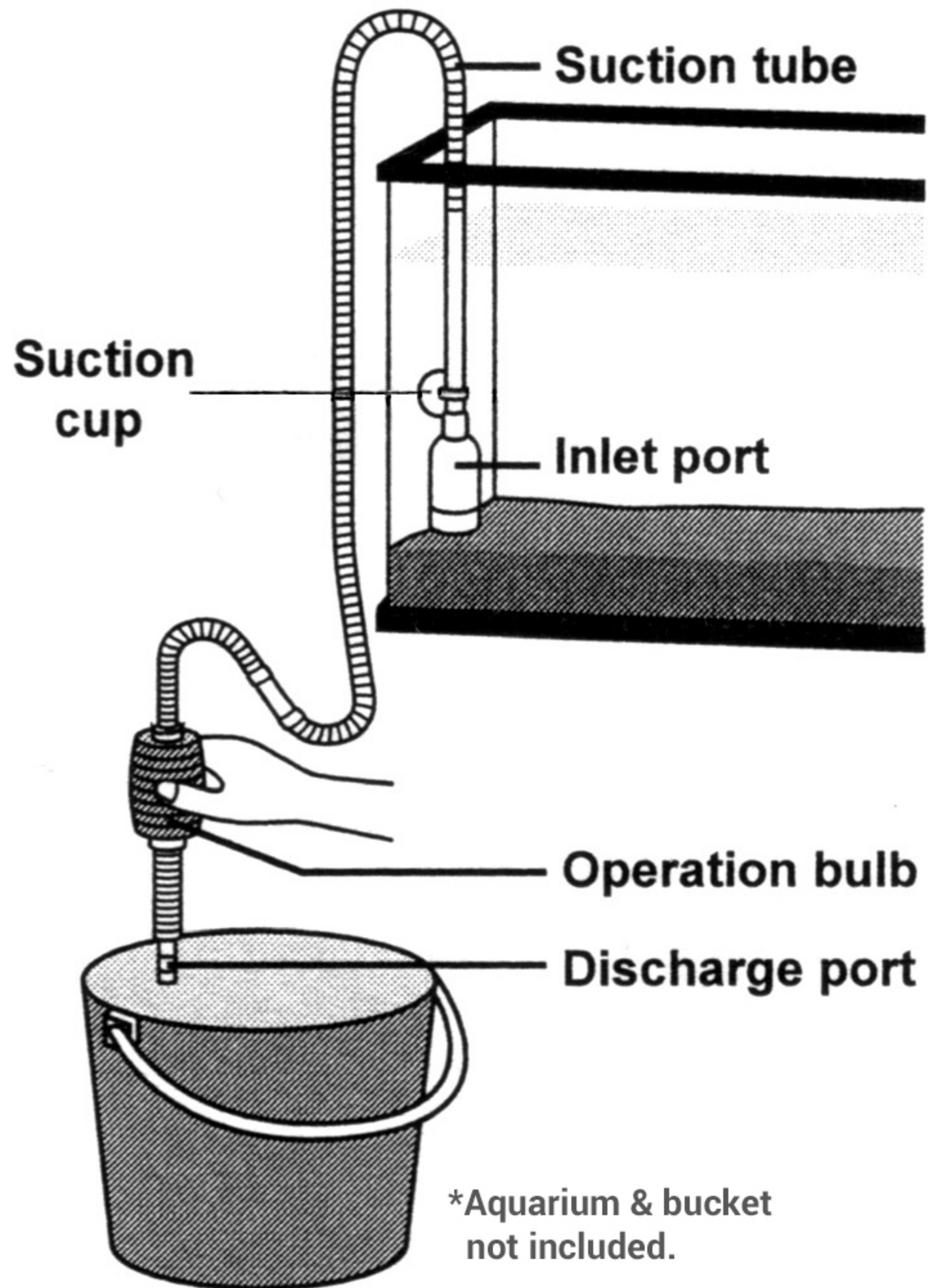


HOW TO OPERATE

1. Put **suction tube** in the water, stick **suction cup** next to the glass then strongly press the bulb 4 to 5 times. Water then will start to flow out of the tank (aquarium), allowing draining, cleaning, and siphon do the work. (Just relax and let the siphon action do the work.) **When taking this action, the tank (aquarium) must be located higher than where the water will be collected (or just discharge those nozzle).**
2. When water flows out, drag **suction nozzle** near to waste (dirt, debris, and etc.) on sand and gravel in the aquarium and stir around lightly then waste and water will be drained together.
3. In order for fish to survive, leave the water in aquarium 1/2 to 1/3 as much.
4. Place a fabric material or a thin net on discharge hose fleet to filter the water if the previous water will be used again.



※ The tank(aquarium) must be located higher than the bucket.

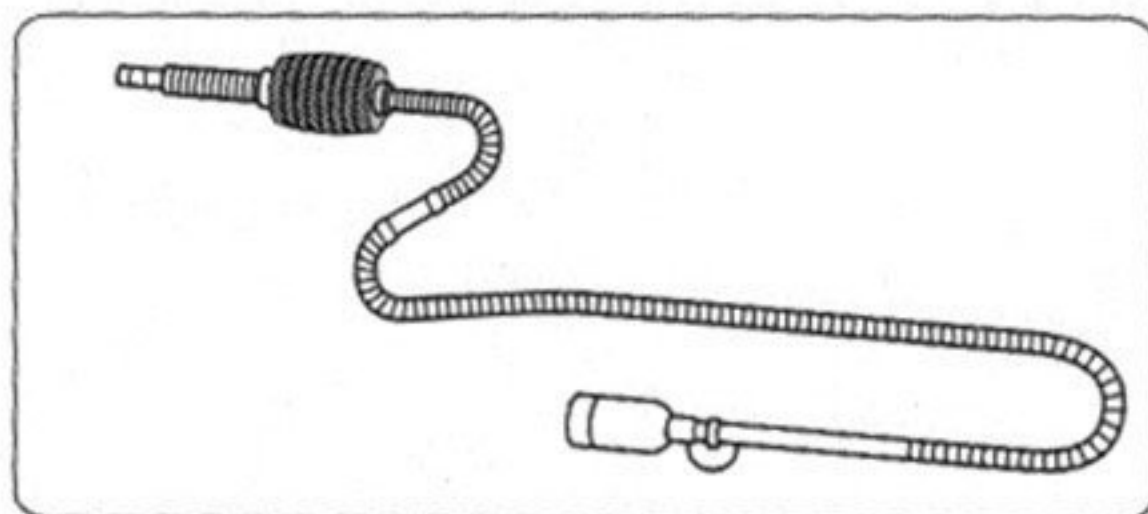
Model
TRFT01

AQUARIUM CLEANER PUMP

INSTRUCTIONS AND PRECAUTIONS



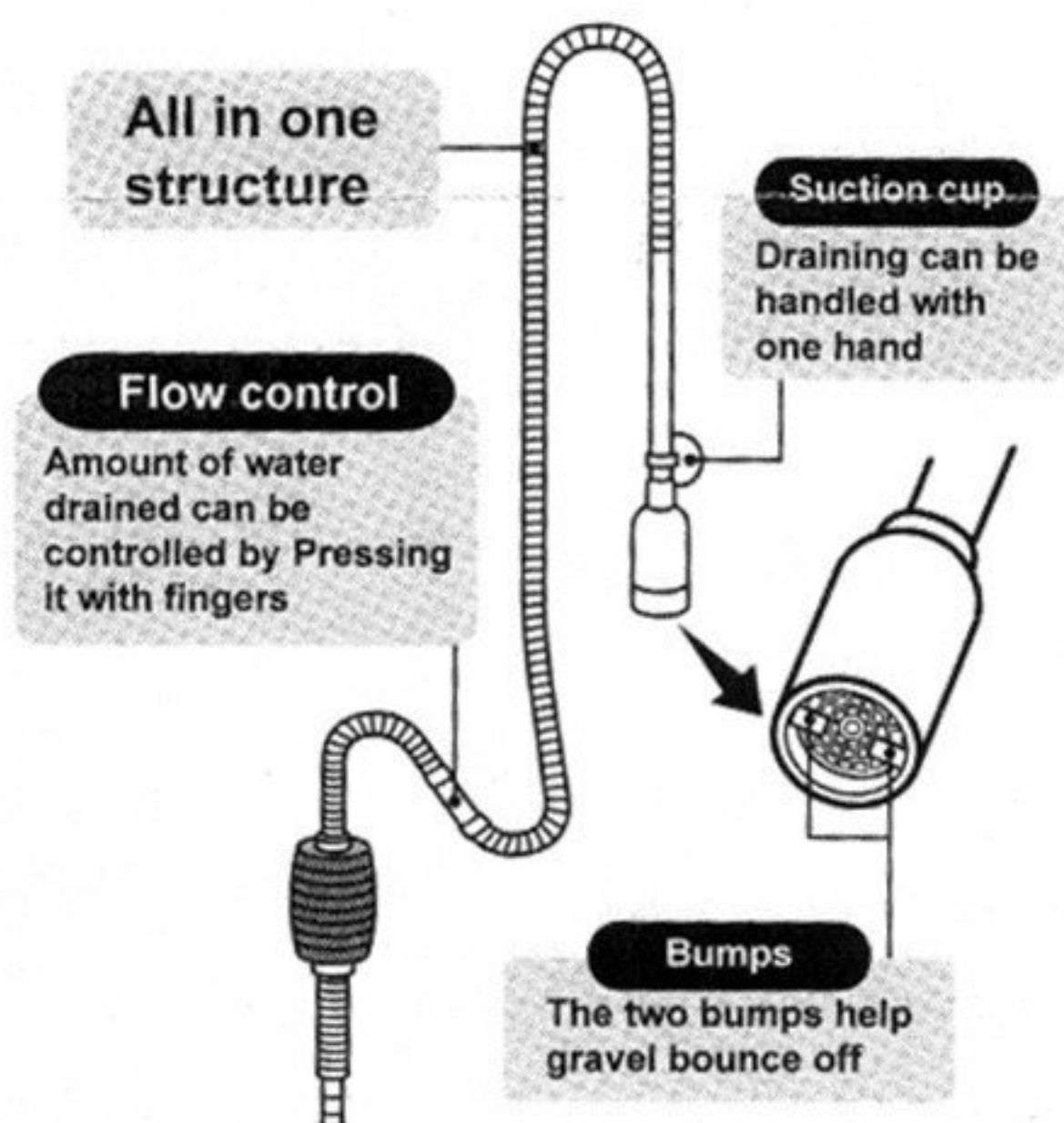
SAVE THESE INSTRUCTIONS.
READ ALL PRECAUTIONS AND INSTRUCTIONS.



- * Easy-to-use cleaner pump for aquarium.
- * Use it with one hand (Glass suction cup included.)
- * Give your fish better living environment.
- * Quickly and easily remove waste and water.

FEATURES

It doesn't hurt any aquarium fish when using.
It can take the waste out too while replacing the water.
User-friendly siphon work.



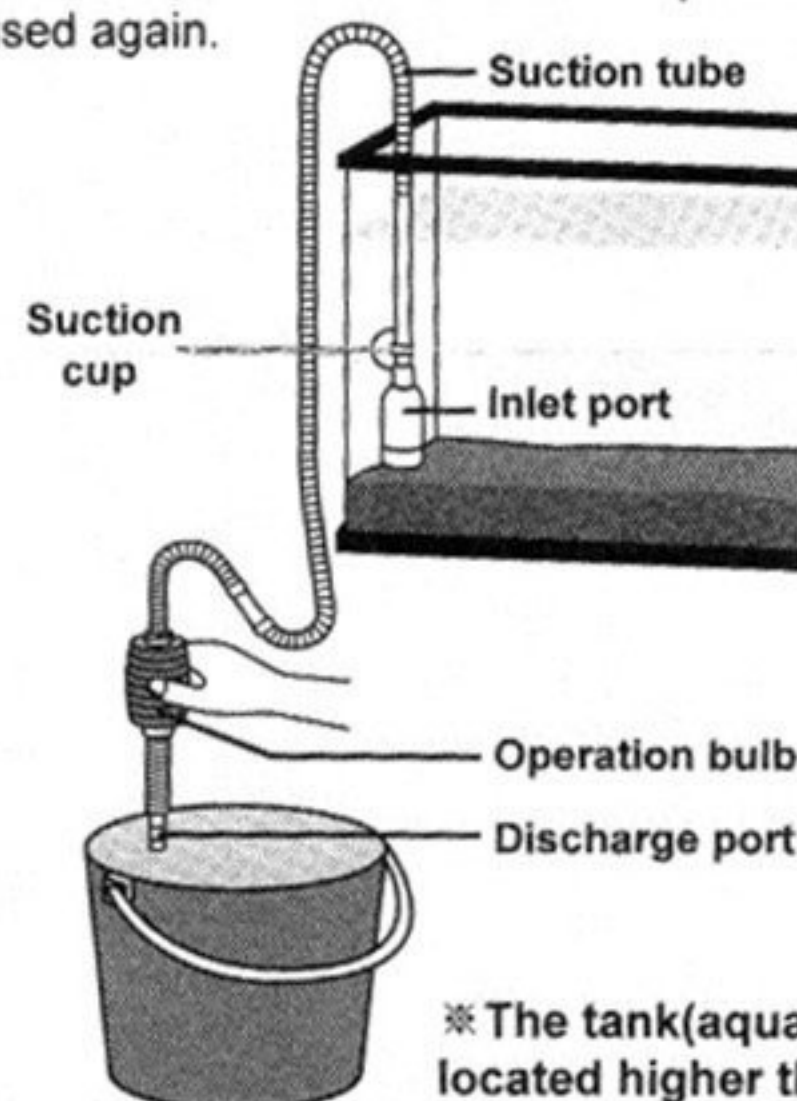
HOW TO USE

1. Put it(suction tube) in the water, stick it(suction cup) next to the glass then strongly press the bulb 4 to 5 times.
Water then will start to flow out of the tank(aquarium), allowing draining, cleaning, and siphon do the work. (just relax and let the siphon action do the work)
When taking this action, the tank(aquarium) must be located higher than where the water will be collected (or just discharge hose nozzle). -Fig.1-

TeraPump
1941 East Occidental Street
Santa Ana CA 92705 USA
www.TeraPump.Net
E-mail : terapump@gmail.com
1-877-251-2288



2. When water flows out, drag it(suction nozzle) near to waste(dirt, debris, and etc.) on sand and gravel in the aquarium and stir around lightly then they(waste and water) will be drained together.
3. In order for fish to survive, leave the water in aquarium 1/2 to 1/3 as much.
4. Place a fabric material or a thin net on(at) discharge hose fleet to filter the water if the previous water will be used again.



-Fig.1-

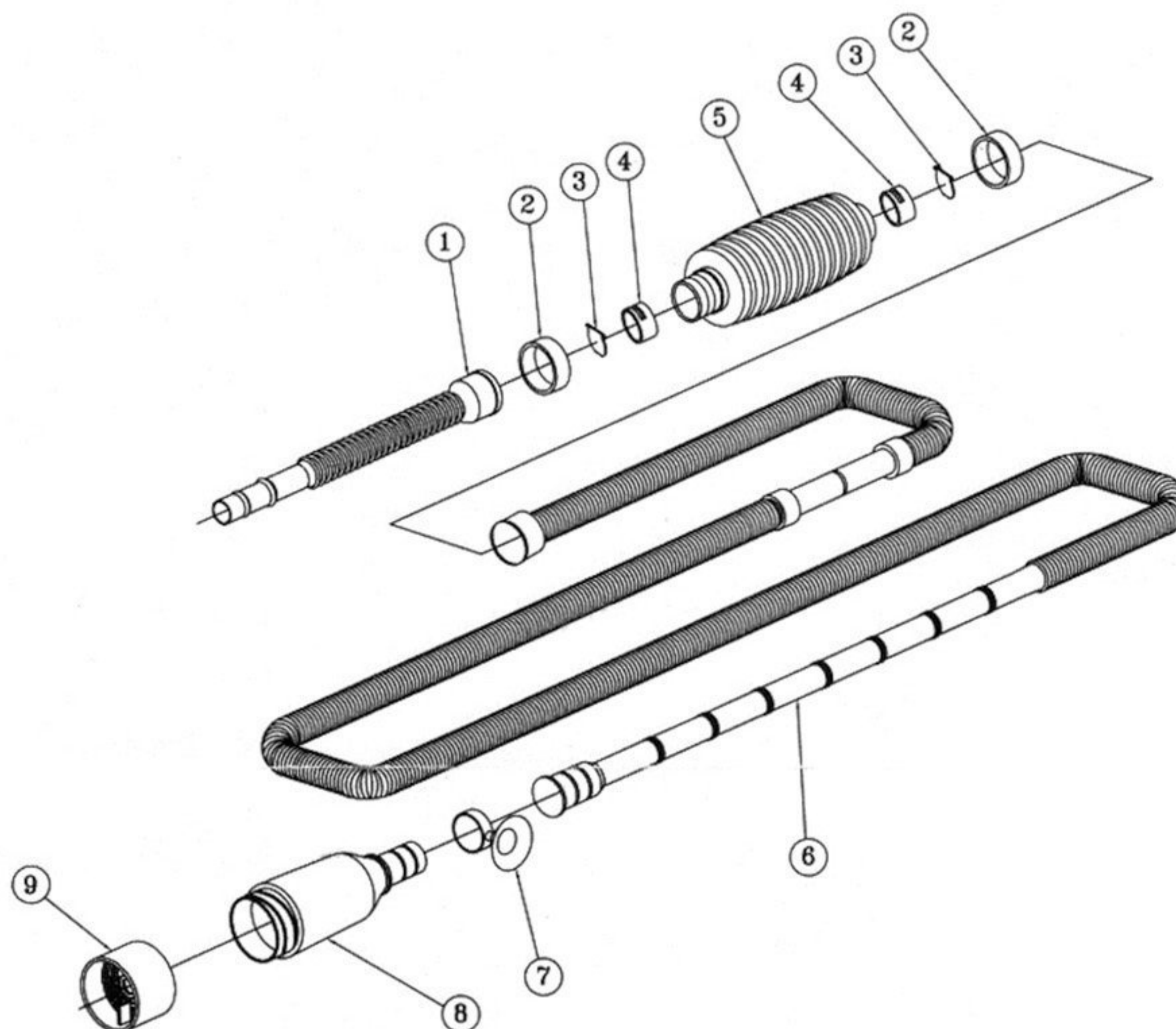
CAUTION

1. This pump is only to use for aquarium (do not use it for other purposes)
2. Make sure that you keep this pump out of the reach of children.
3. Be aware that small fish can be getting sucked up into power-head intake.
4. You must unplug any electronic device you use for the aquarium tank before you put your hands in the aquarium water.

Total length : About 67 in
Materials / Hoses : Polyethylene
Operation bulb : Polytethylene, EVA
Suction cap : PVC

Made in Korea

ASSEMBLY DIAGRAM



PLEASE READ THE FOLLOWING CAREFULLY

THE MANUFACTURER AND/OR DISTRIBUTOR HAS PROVIDED THE PARTS LIST AND ASSEMBLY DIAGRAM IN THIS DOCUMENT AS A REFERENCE TOOL ONLY. NEITHER THE MANUFACTURER NOR DISTRIBUTOR MAKES ANY REPRESENTATION OR WARRANTY OF ANY KIND TO THE BUYER THAT HE OR SHE IS QUALIFIED TO MAKE ANY REPAIRS TO THE PRODUCT, OR THAT HE OR SHE IS QUALIFIED TO REPLACE ANY PARTS OF THE PRODUCT. IN FACT, THE MANUFACTURER AND/OR DISTRIBUTOR EXPRESSLY STATES THAT ALL REPAIRS AND PARTS REPLACEMENTS SHOULD BE UNDERTAKEN BY CERTIFIED AND LICENSED TECHNICIANS, AND NOT BY THE BUYER. THE BUYER ASSUMES ALL RISK AND LIABILITY ARISING OUT OF HIS OR HER REPAIRS TO THE ORIGINAL PRODUCT OR REPLACEMENT PARTS THERETO, OR ARISING OUT OF HIS OR HER INSTALLATION OF REPLACEMENT PARTS THERETO.

PARTS LIST

NO	PART NAME	RAW MAT'L	Q'TY	REMARK
1	OUTLET	PE	1	
2	CLAMP	PE	2	
3	VALVE	PE	2	
4	VALVE CASE	PP	2	
5	OPERATION BULB	PE+EVA	1	
6	HOSE	PE	1	
7	SUCTION CUP	PVC	1	
8	PIPE	PE	1	
9	FILTER	PE	1	