

frisco.
better pet goods



**DELUXE FOLDABLE
CARPETED PET STAIRS
INSTRUCTION MANUAL**

OVERVIEW

These pet stairs don't require any parts to be attached. So save that screwdriver and breathe easy—there are only 3 steps till they're all set!

GEAR UP

No tools needed, just a little elbow grease.



STEP 1 Place pet stairs on a flat surface, with the back facing you. Hint—the back is the part your pet won't be stepping on.



STEP 2a Find the support legs. Now pull them—easy does it—until locking brace locks in. Hint—you'll know the locking brace is in place because it will overlap the support leg. Stand the pet stairs upright.



STEP 3 Make sure the locking brace stays put. Keeping the pet stairs on a flat surface, give the support leg a little wiggle. If the locking brace is locked securely, the support leg won't budge. That's your cue to give yourself a pat on the back.

That's it! Now your pal can reach new heights, or just his favorite spot on the couch.



FOR EASY STORAGE: Press up on the locking brace to fold the support leg and stow away neatly.

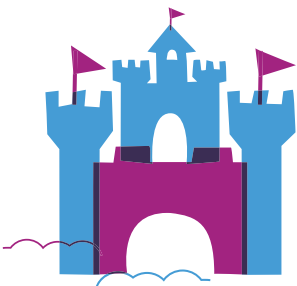
WARNINGS AND CAUTIONS

Please read all warnings and instructions thoroughly before assembling.

- Assembly should be completed on a clean, level surface.
- Intended for pet use only. Do not use as a step stool for people.
- As a natural wood product, some variability in the color and grain of the stairs is normal.

CLEANING INSTRUCTIONS

Spot clean with a damp cloth as needed. If small nicks or scratches occur, the finish can be restored using colored furniture polish.



QUESTIONS?

CALL OUR FRIENDLY CUSTOMER SERVICE TEAM ANYTIME.
WE'RE HERE 24/7! 1-800-67-CHEWY (672-4399)