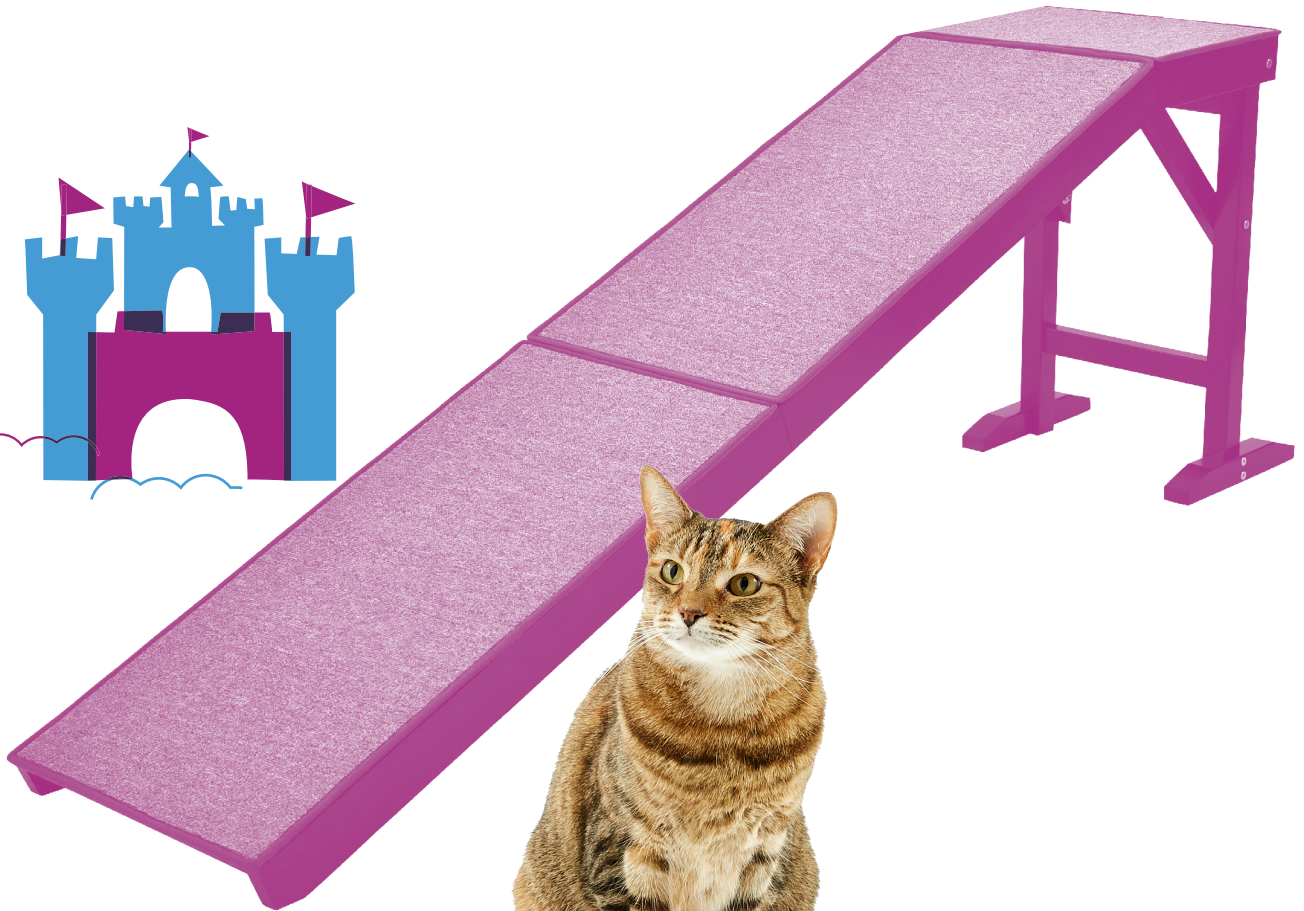
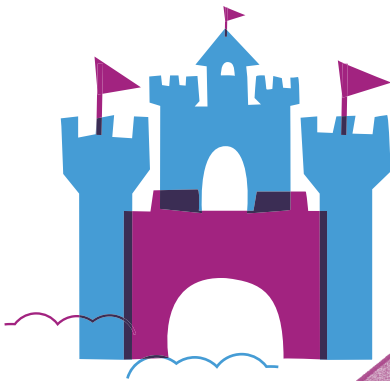
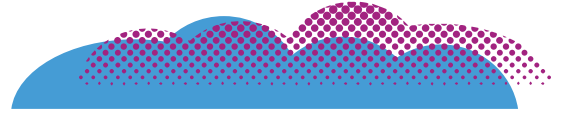


frisco.
better pet goods



PET RAMP

INSTRUCTION MANUAL

PARTS INCLUDED

Prior to assembly, please be sure to identify and sort all parts shown below.



ASSEMBLY INSTRUCTIONS FOR ITEM #156784

OVERVIEW

This pet ramp includes panels you'll need to connect together using braces of various shapes, plus a support ladder that keeps it upright. Follow these steps and once you're done putting it together, your pets will think you're a genius!

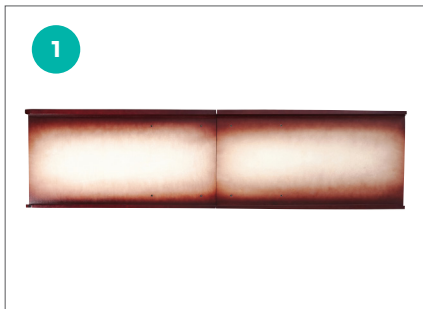
GEAR UP

You'll need a Phillips head screwdriver (not included), a set of pliers (not included) and an allen key (included).

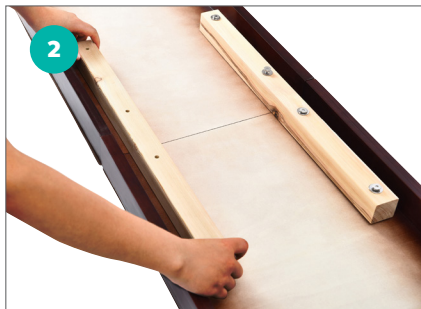
IT TAKES TWO

We recommend that assembly be a two-person project.

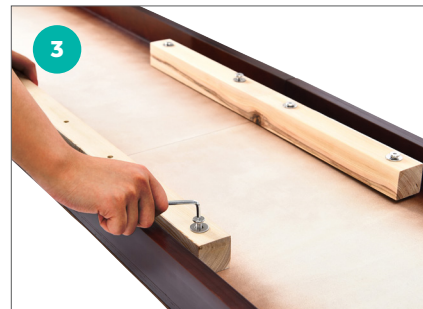
PART 1 - CONNECT LONG PANELS



STEP 1 Place the 2 long panels (#1) and (#2) on a flat surface, with the ends with the 2 threaded holes touching. Hint—these threaded holes will be used to attach the long panels to one another.



STEP 2 We all need a little support, so put the long braces (#3) in place. Place one on the inside edge where the 2 long panels overlap, lining up the screw holes on the long brace with the threaded holes on the long panel. Do the same with the second long brace, on the other side.

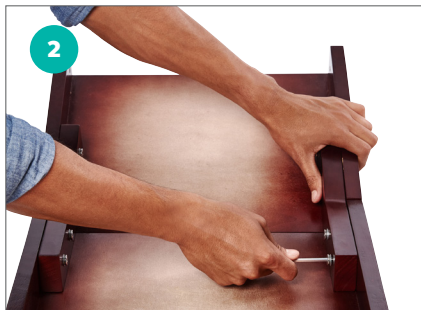


STEP 3 Put in screws (B) with washers (F) into the 4 screw holes to attach the 2 long support braces (#3) on either side. Tighten screws loosely with included allen key (E).

PART 2 - CONNECT SHORT PANEL TO LONG PANELS



STEP 1 Place the 1 short panel (#4) (it's the runt of the pack) next to the now connected 2 long panels. You'll want to place it next to the end of the long panel that has the threaded holes (#2).

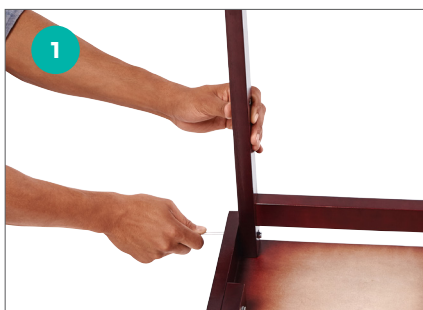


STEP 2 Place a bent brace (#5) on either side of the inside edge of the short panel (#4), lining the screw holes on the bent brace with the threaded holes on the short and long panels. Hint—the bent braces also angle toward you, just like the short panel.

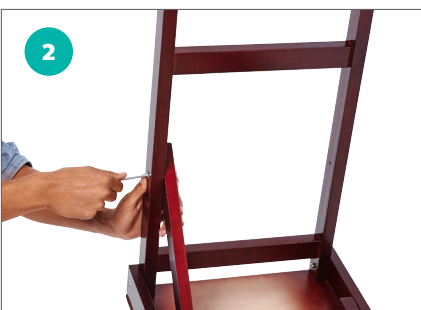


STEP 3 Place in 3 screws (B) with washers (F) in the holes on the bent brace (#5), but skip the second to last hole (you'll need it for part 3b). Tighten screws loosely with included allen key (E).

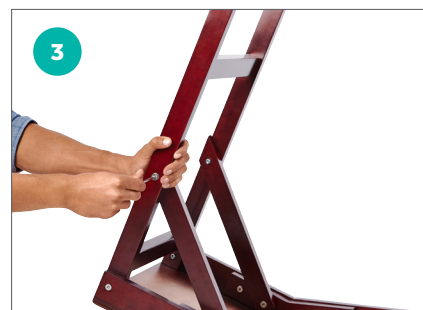
PART 3 - CONNECT SUPPORT LADDER AND ANGLED BRACES



STEP 1 Place the support ladder (#6) on the short panel (#4), lining up the 2 screw holes on the support ladder with the 2 threaded holes on the free end of the short panel. Insert screws (C) and washers (F) on each side, then tighten screws with nuts (G) using the included allen key (E). Use pliers if needed.

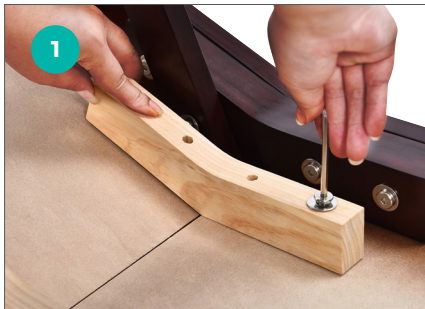


STEP 2 The 2 angled braces (#7) act as support beams to secure the support ladder (#6), so have them handy. Align angled brace with the threaded hole on the inside middle of the support ladder and the threaded hole on the inside middle of the bent brace. HINT—This is the hole we left open in part 2. Insert screws (D) and washers (F), but DON'T TIGHTEN YET.

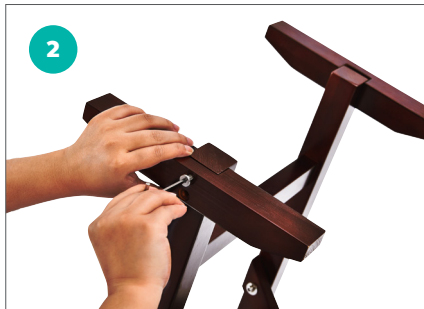


STEP 3 Repeat Step 2 for the second angled brace (#7) on the other side, and TIGHTEN ALL HARDWARE using the included allen key.

PART 4 - ADDING THE SUPPORT FEET



STEP 1 Find your remaining 2 short braces (#8) and line up with the threaded holes where the long panel and short panel meet. Place screws (B) and washers (F) in the holes and tighten fully.



STEP 2 Locate the 2 support feet (#9) to connect to the support ladder. Align the holes on the support feet with the holes on the bottom of the support ladder. Insert screw (A) and tighten fully.

NICE AND TIGHT? ALRIGHT!

Make sure all screws are tightened fully before standing the ramp upright, then let your pet climb on!

WARNINGS AND CAUTIONS

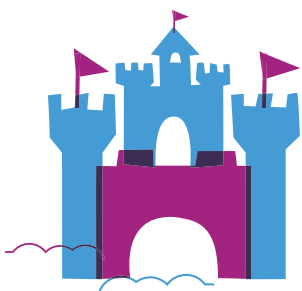
Please read all warnings and instructions thoroughly before assembling.

- Grab a friend—it's recommended that two people assemble this product.
- Assembly should be completed on a clean, level surface.
- Power tools are not recommended for assembly.
- Intended for pet use only. Do not use a ramp for people.

CLEANING INSTRUCTIONS

If small nicks or scratches occur, the finish can be restored using the recommended pet-friendly, furniture polish.

Spot clean with a damp cloth as needed.



QUESTIONS?

CALL OUR FRIENDLY CUSTOMER SERVICE TEAM ANYTIME.
WE'RE HERE 24/7! 1-800-67-CHEWY (672-4399)