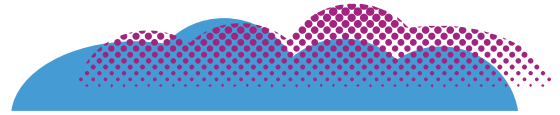


frisco.
better pet goods

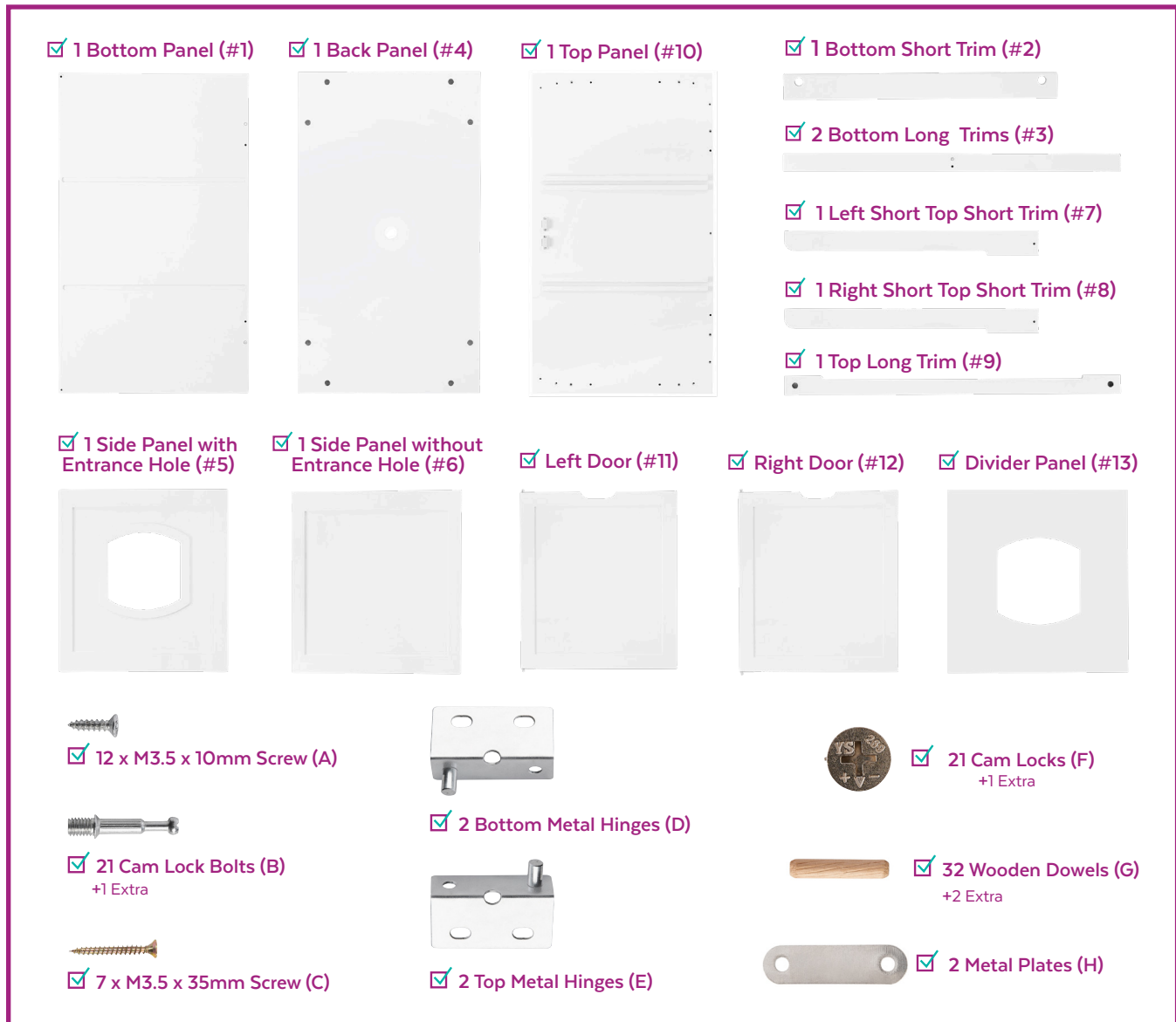


BENCH STYLE LITTER BOX ENCLOSURE

INSTRUCTION MANUAL

PARTS INCLUDED

Prior to assembly, please be sure to identify and sort all parts shown below.



ASSEMBLY INSTRUCTIONS FOR ITEM #156788

OVERVIEW

A stylish bench and litter box cover, all in one. It comes with panels you'll need to put together using cam bolts and dowels. Follow our step-by-step instructions and your kitty will have the most stylish potty spot in town, well at least at home. We can't speak for the neighbors.

GEAR UP

You'll need a Phillips head screwdriver (not included). A power tool is not recommended.

IT TAKES TWO

We recommend this as a two-person project.

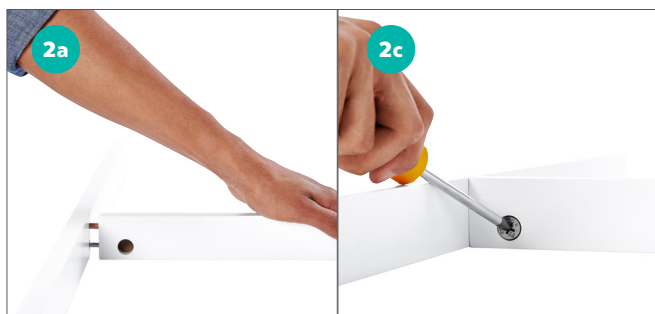
PART 1 - SET UP BOTTOM TRIMS, BOTTOM PANEL AND TOP PANEL



STEP 1a Locate the 2 long trims (#3) and short trim (#2) and lay them out in an H shape.

STEP 1b Insert 1 wooden dowel (G) into the non-threaded hole on both of the long trims (#3).

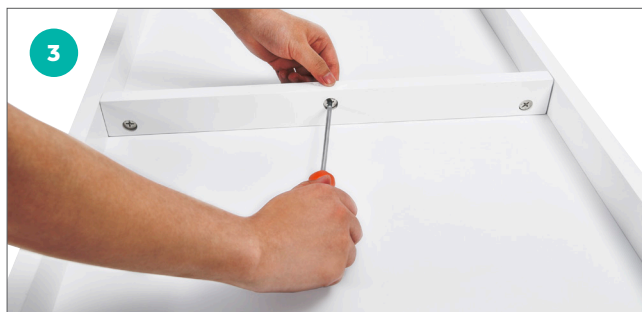
STEP 1c Tighten cam lock bolts (B) into the long trims (#3), 1 for each trim.



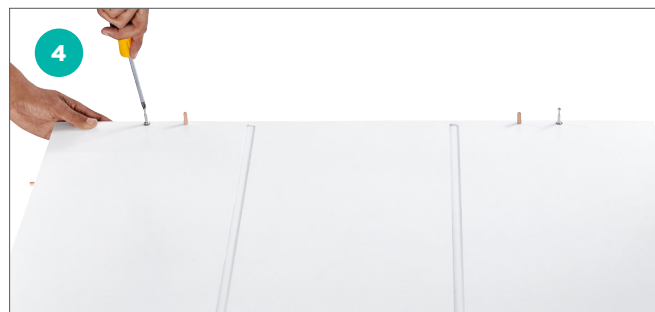
STEP 2a Line up the cam lock bolts on long trim (#3) into the holes located on each end of the short trim (#2).

STEP 2b Insert cam locks (F) into the 2 large holes located on each end of the short trim.

STEP 2c Turn cam locks clockwise to secure trim assembly.



STEP 3 Insert & tighten 1 cam lock bolt into bottom panel (#1). Align the cam lock bolt to the hole on the bottom of the assembled H shaped trim. Insert cam locks into the holes and turn the cam lock clockwise to secure. Make sure the H shaped trim is aligned with the edge of the bottom panel (#1).



STEP 4a Insert 2 wooden dowels into the holes on top of the bottom panel (#1). Then insert 2 wooden dowels into the holes on both side edges, 4 dowels total.

STEP 4b Insert 2 wooden dowels into each end of the bottom long trim, 8 dowels total.

STEP 4c Insert 2 cam lock bolts into the threaded holes on the top of the bottom panel (#1) and tighten.

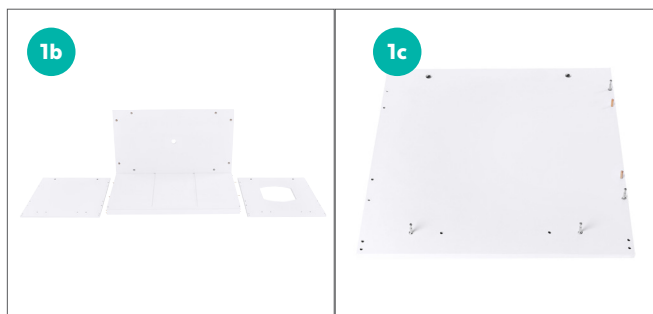
PART 2 - CONNECT BACK PANEL TO BOTTOM PANEL



STEP 1a Align the holes on the bottom of the back panel (#4) with the cam lock bolts installed on the bottom panel.

STEP 1b Insert 2 cam locks into the holes on the front of the back panel and turn clockwise to secure.

PART 3 - SET UP SIDE PANELS



STEP 1a Pick a side! Determine which side you would like your entrance to be located, (we chose to put entrance on the right in this assembly). We suggest consulting with your kitty.

STEP 1b Lay out each side panel (#5 & 6) next to the partially built enclosure. This will help determine which panel to use.

STEP 1c Insert 2 dowels into the holes on the back side of the side panels. This is the side that will line up with the back panel. Insert 2 cam lock bolts in the threaded holes on the back of the side panel. Then insert 2 cam lock bolts into the threaded holes on the bottom of the side panels.



STEP 2a Align the wooden dowels and the cam lock bolts on the side panel of your choice installed in step 1 with the back panel and bottom panel, then push to secure.

STEP 2b CAREFULLY flip the enclosure onto the side panel to expose the bottom of the enclosure.



STEP 3 Align the wooden dowels and the cam lock bolts on the other side panel installed in step 1 with the back panel and bottom panel, then push gently to align.

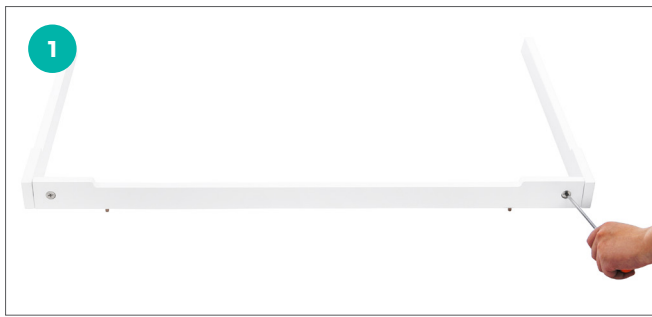


STEP 4 Insert cam locks into all 4 holes on the bottom of the enclosure and turn clockwise to tighten. Hint—both side panels should be now installed.



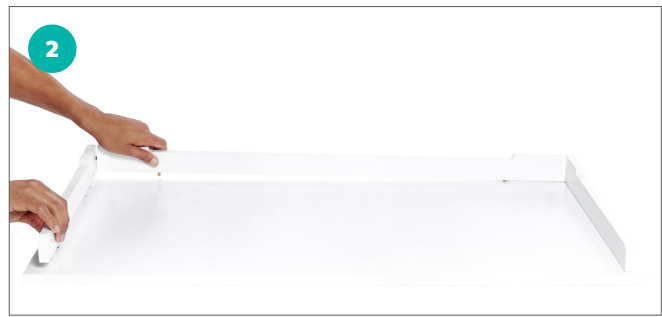
STEP 5 Flip the enclosure back to standing position and insert wooden dowels into the holes on the top of the back panel and both side panels (6 dowels total).

PART 4 - TOP PANEL AND TOP TRIM



STEP 1a Find the 2 top short trims (#7 & 8) and the 1 long trim (#9) piece. Insert a cam lock bolt into the threaded holes on each top short trim and screw to tighten.

STEP 1b Align the holes on the ends of the top long trim (#9) with the cam lock bolts installed, insert cam locks and turn clockwise to secure. Hint—the cam locks should be facing backward so you can't see them once the enclosure is fully assembled.



STEP 2a Locate the top panel (#10) and place on a flat surface with the magnet and grooves facing down. Insert wooden dowels into the 6 holes on the top of the panel.

STEP 2b Align the holes on the bottom of the top trim with the wooden dowels installed in the previous step and push down to secure.



STEP 3a Carefully flip over the top panel making sure the trim does not fall off. Insert 7 long wood screws (C) into the small holes and tighten to secure the top trim to the top panel.

STEP 3b Insert 6 cam lock bolts into the threaded holes provided and screw to tighten fully.



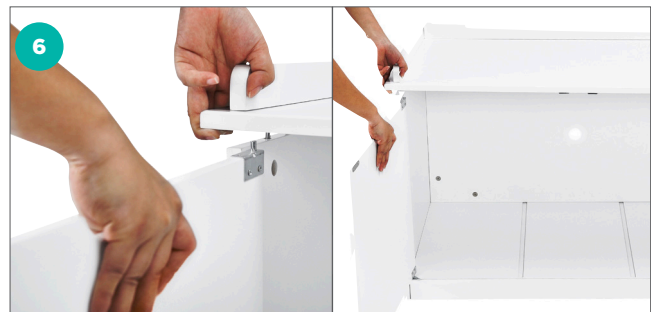
STEP 4 Align the cam lock bolts installed on the bottom of the top panel to the holes on the top of the built enclosure. Gently press down with all bolts and holes aligned. Do not insert cam locks yet.



STEP 5a Locate the left front door panel (#11) and find the 4 small holes at the top and bottom of the door. Take the two hinges (D & E) and use the 4 small screws (A) to attach them to the back of the panel with the metal dowel close to the edge of the door.

STEP 5b Locate the remaining 2 holes on the back of the door. Attach the metal plate (H) using 2 small screws (A) and tighten fully.

STEP 5c Repeat for the right door panel (#12)



STEP 6 Align the hinge with the hole on the triangle metal plate on the bottom panel. Slightly lift the top panel and align the top hinge into the screw nut hole on the bottom of the top panel. Repeat step for the other door panel.

PART 5 - INSERTING THE OPTIONAL DIVIDER PANEL



STEP 7 Insert cam locks into the holes inside of the enclosure towards the top and tighten to secure (6 total).



STEP 1 To insert the optional divider panel (#13) determine where you would like to place it. Place the top of the panel into the top tracks at an angle and gently slide the bottom into the bottom track to secure. Hint—Give a wiggle to assure both top and bottom are inside the track.

NICE AND TIGHT? ALRIGHT!

After you double-check to make sure ALL cam locks are securely tightened, your stylish litter enclosure can be open for business!

CUSTOMIZE IT!

Use the optional divider panel to personalize your kitty's space. Slide it into any one of the 2 panel grooves or leave it out for more room.

Tip: To protect against messes, we recommend placing a potty pad under the litter box.

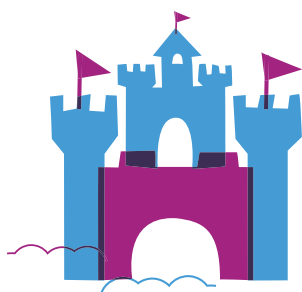
WARNINGS AND CAUTIONS

Please read all warnings and instructions thoroughly before assembling.

- Grab a friend—it's recommended that two people assemble this product.
- Assembly should be completed on a clean, level surface.
- Power tools are not recommended for assembly.
- Please handle all panels and hardware with care to avoid any damage.
- This litter box cover is intended for pet use only.
- Do not sit or stand on the assembled product.

CLEANING INSTRUCTIONS

Spot clean with a damp cloth as needed



QUESTIONS?

CALL OUR FRIENDLY CUSTOMER SERVICE TEAM ANYTIME.
WE'RE HERE 24/7! 1-800-67-CHEWY (672-4399)