

215.9x279.4mm

frisco.
better pet goods



SKU# 156793,
212128, 156792,
212129

ACCORDION WOODEN GATE

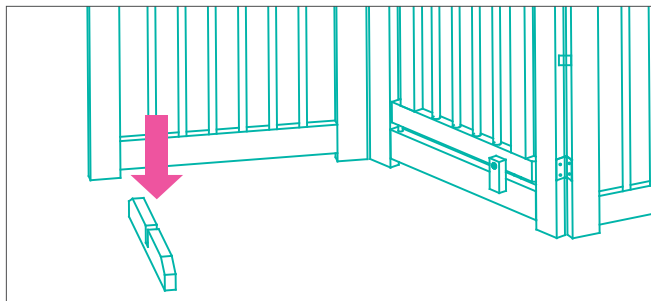
INSTRUCTION MANUAL

FOR PET USE ONLY

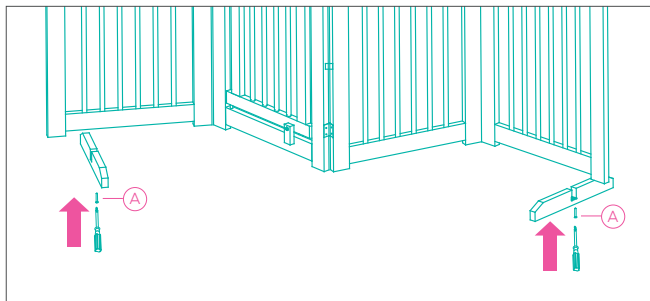
ASSEMBLY OVERVIEW

This accordion wooden gate has just 3 pieces, 4 steps, and one high-5. You'll be containing your cuddle bud in no time.

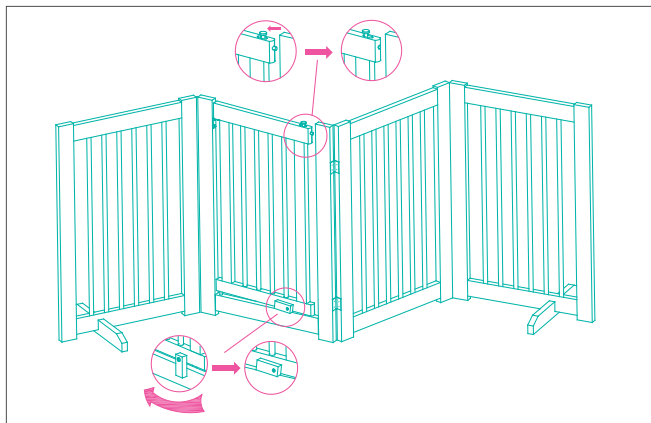
GET IN GEAR - All you'll need is a Phillips-head screwdriver.



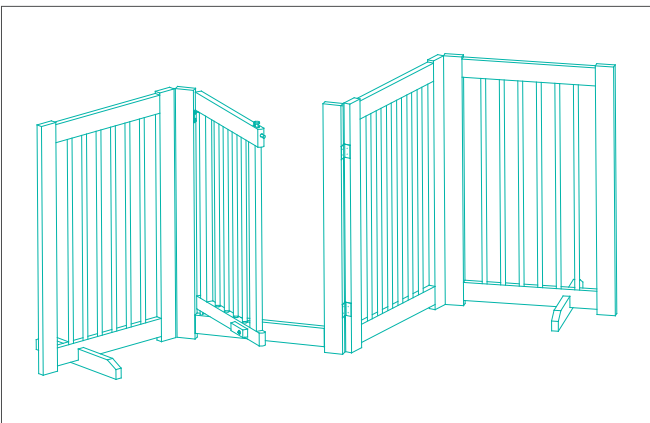
STEP 1 Place gate upright on a flat surface with panels open. Insert gate into slots on support feet.



STEP 2 Align support feet with the bottom of each outer panel. Insert the tapping screw into the 2 holes and tighten with a Phillips-head screwdriver. Make sure the feet lay flush with the bottom of the panel. If you plan on folding and storing the gate often you don't need to screw in the feet.



STEP 3 To open the gate push on the spring-loaded latch located at the top of the door panel. To allow door to swing both directions, turn lever at bottom of door panel to horizontal position. To limit door swing to one direction, turn lever back to vertical position.



STEP 4 For best use, configure panels in a zig-zag pattern to prevent the product from falling over.

TIP: If you have an escape artist, the bottom door lever can be turned to the vertical position on the inside of the gate to prevent the door from being pushed from the bottom.



CARE AND MAINTENANCE

To clean: Use soft dry or damp cloth to wipe clean. Use a mild soap or detergent dissolved in water if needed. Dry immediately. Do not soak wood.

WARNINGS AND CAUTIONS

Please read all warnings and instructions thoroughly before assembling.

- Power tools not recommended.
- Assembly should be completed on a clean, level surface.
- Intended for pet use only. Not for use as a baby/toddler gate.
- As a natural wood product, some variability in the color and grain of the gate is normal.
- Do not place this product in a location where passage through could lead to danger.
- This product is designed for use as a pet gate or room divider only.
- This product cannot completely prevent pets from passing through.
- Keep this product in sight and keep the door open when unattended to avoid unexpected injury or death of your pet.
- Check the gate often for loose screws and tighten as needed. Do not alter the product to avoid accidents and/or injury to self, pets, or others.
- Keep this product away from all heat sources at all times to avoid unexpected product damage or burn-related injuries to persons/pets.
- Do not use this product while your pet is leashed to avoid unexpected accidents/injuries, such as dog entanglement.
- Do not lean or sit on this product to avoid unexpected personal accidents and/or product damage.
- Do not use this product at the top of the staircase or near a glass door.
- Pet owners should be very cautious about appropriate placement for this product.
- Do not step over this product to avoid falling and serious injury.
- Do not use a scrub brush and/or a polishing powder as these may cause scratches, rust, and discoloration.
- Do not use harsh chemicals such as thinner, benzene, or alcohol as these may cause damage/discoloration.

QUESTIONS?

CALL OUR FRIENDLY CUSTOMER SERVICE TEAM ANYTIME.
WE'RE HERE 24/7! 1-800-67-CHEWY (672-4399)

Available exclusively at [chewy.com](https://www.chewy.com) 1-800-672-4399