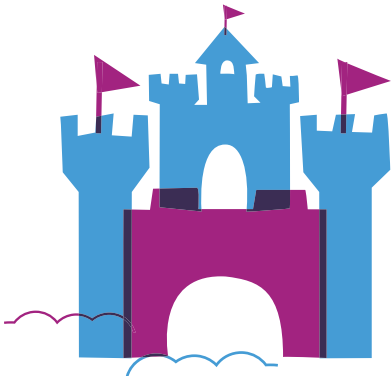
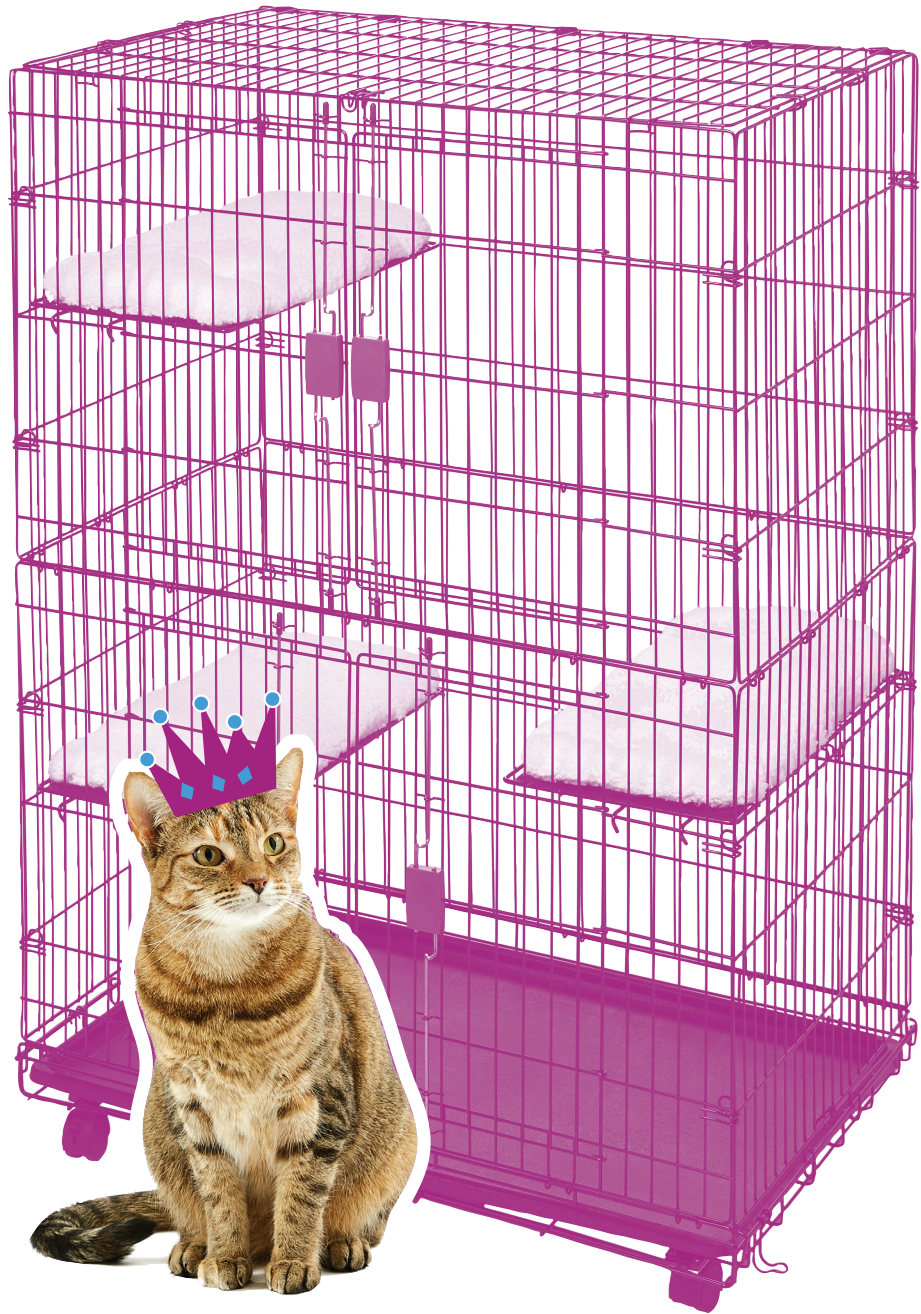
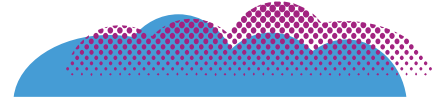


**frisco.**  
better pet goods



# CAT PLAYPEN

## INSTRUCTION MANUAL

## PARTS INCLUDED

- ✓ Folded Pen
- ✓ Plastic Pan
- ✓ 3 Mats
- ✓ 3 Shelves
- ✓ Box of Casters

## BUDDY UP!

Although this playpen can be assembled by one person, we recommend enlisting a friend for easier assembly.

## GEAR UP!

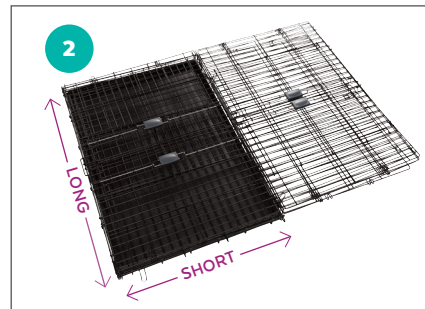
No tools are needed to assemble the playpen. To install the rolling casters you will need a Phillips head screw driver and pliers.

## PART 1: ASSEMBLE THE CAT PLAYPEN



### STEP 1 - Prepare Cat Playpen for Assembly

Remove the folded playpen from the carton and place it on the floor with the plastic pan on the bottom.



### STEP 2 - Unfold Playpen

Unfold the playpen by unlocking the latches on 3 sides, and lifting front and back panels (long ones), then the side panels (short ones), one at a time.

Remove the mats, shelves, and box of casters.



### STEP 3 - Set Up First Level

Secure the side panels by lifting them and latching together with the corner locks located on the front and back panels.

**TIP:** Assemble side panels one at a time. Make sure each side panel is aligned and secured properly before proceeding with the next assembly.



### STEP 4 - Set Up Second Level

Follow instructions for STEP 3 until all side panels on the second level are securely interlocked with the corner locks located on the front and back panels of the second level.

**TIP:** Now's a good time to check that all panels are aligned and latched securely.



### STEP 5 - Stabilize Panels

Secure the 2 hooks at the bottom of the side panels by latching into a locked position for added stability.



### STEP 6 - Secure Top Panel

Swing the top panel over and secure all the hooks with each of the corresponding sides (2 hooks per side), then the front panel (3 hooks).

## PART 2: INSTALL ROLLING CASTERS (OPTIONAL)

If you want your kitty's playpen to have some mobility, you can install the rolling casters now or whenever you want.

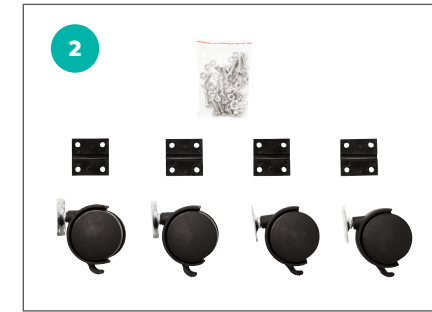


### STEP 1 - Position the Playpen

Ensure that all panels are locked in place and the doors are securely closed. Remove the removable plastic tray.

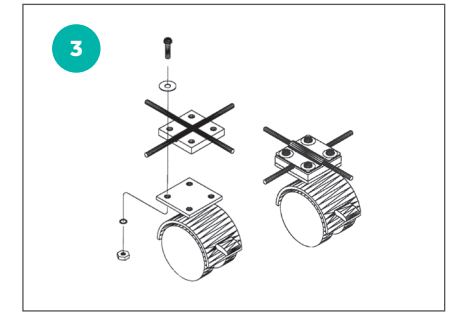
**HINT:** You'll need to place the tray locking latch into the unlocked position to remove the tray, and then back into the locked position to secure it, after installing casters.

Then, gently tip the playpen over on any side to access the bottom panel.



### STEP 2 - Locate Casters, Plastic Plates and Nuts & Bolts

- 4 Rolling Casters
- 16 Phillips Head Bolts & Nuts
- 16 Flat and 16 Lock Washers
- 4 Plastic Plates



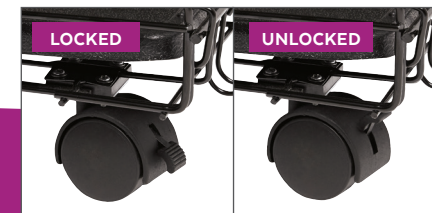
### STEP 3 - Install Rolling Casters

Place the plastic plates on the bottom of the intersecting wires and align the wires with the built-in grooves on the plastic plate.

**TIP:** Check that the wire and plastic plates are flush before inserting hardware.

Insert bolt with flat washer into each hole, assemble lock washer and secure with nut, using Phillips head screwdriver and pliers.

Once all casters are installed, set the playpen upright and slide the plastic tray back into place.



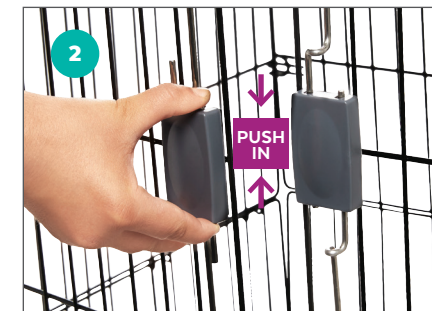
Now you can move the playpen to wherever your kitty likes it best, or lock the casters so it stays put.

## PART 3: ADD THE SHELVES



### STEP 1 - Set Up Shelves

Attach the soft mat to one of the shelves by looping the hook-and-loop strip through the wire in the corner of the shelf and securing it on the underside of the bed. Repeat with other sides.



### STEP 2 - Open the Playpen Door

To open the door, push both handles in with thumb and index finger until the wires retreat from the loops.

(To close, release the handles making sure that the wires insert through both bottom and top loops.)



### STEP 3 - Install Shelves

With the playpen doors open, install the shelves by securing the hooks over a wire on the back panel first, then on the side panel, and the front panel. Now kitty will have the perfect perch to lounge and nap on.

**TIP:** You'll want to stagger the shelves so your kitty can sit and lay comfortably on them.

To Remove Shelves: First unlatch the middle hook, then the front and back hook.





## MAKING IT COMFY

---

Once you assemble your kitty's playpen, ensure it makes a happy first im-purr-sion by making it extra comfy and welcoming. Here are some tips to get started:

- Add a litter box that's just the right size for the playpen
- Place a comfy bed or mat inside so your kitty can nap or lounge
- Bring in some of your cat's favorite toys
- Set up a small scratch pad inside for some daily scratch sessions
- Sprinkle some catnip on the shelves to get kitties excited about the playpen

## MAINTENANCE AND CARE

---

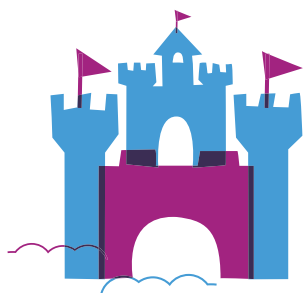
- To provide your pet with the most comfortable "castle" possible, make sure to clean the playpen routinely with a mild, non-toxic cleaner and water. Don't use abrasive cleaners or bleach.
- To clean the mats, please machine wash separately on a gentle cycle with cold water. Do not use bleach. Tumble dry low.

## WARNINGS AND CAUTIONS

---

**Please read all warnings and instructions thoroughly before assembling.**

- Never leave pets unattended.
- For use with pets only.
- Never allow children to play in, on, or around the playpen.
- Do not assemble with pet inside the playpen.
- Do not assemble if any part is missing or damaged.
- Please follow all assembly instructions carefully and use all parts included. Keep these assembly instructions handy for future use.
- Always ensure that all panels and hardware are properly latched and secure before letting your pet inside the playpen. Discontinue use if any parts become damaged.
- Always be sure pets have enough food and water before leaving them in their playpen. DO NOT leave your pet inside for extended periods of time. Remember, pets need time to socialize and exercise! Consult your veterinarian to determine the appropriate amount of time that your pet can safely and comfortably be left in the playpen.
- Never use the playpen without its plastic pan properly fitted and secured, and be sure not to place your pet into a playpen with a damaged pan.
- Do not store your playpen outside or in a car. Extreme heat may cause the playpen pan to warp.
- Please be sure the shelves are properly installed, as improperly installed shelves can cause injuries to your pet.
- You can transport your pet in this playpen for short distances inside the home, but not for long distances. When traveling or moving long distance, please use a carrier specifically designed for that purpose.
- While we are dedicated to providing the best for your pet, Chewy, Inc. is not responsible for any loss, damage, discomfort, injury, illness, death or costs of any kind as a result of or by use of this playpen.



### QUESTIONS?

CALL OUR FRIENDLY CUSTOMER SERVICE TEAM ANYTIME.  
WE'RE HERE 24/7! 1-800-67-CHEWY (672-4399)