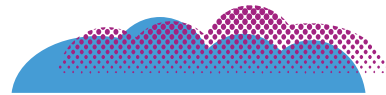
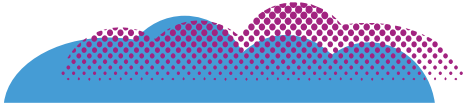
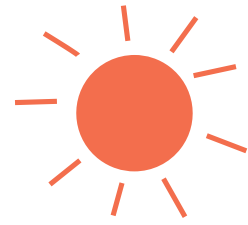


**frisco.**  
better pet goods



# DOG POOL

## INSTRUCTION MANUAL

FOR PET USE ONLY

## FOR PET USE ONLY

### IMPORTANT - READ BEFORE SETTING UP THE POOL

---

- Do not set up on concrete, asphalt or other hard surfaces.
- Not for use indoors.
- Only set on a grassy, level area free of stones, sticks or dips.
- Allow a 6.5-foot clearance away from buildings, stairs, fences, walls, water, overhanging branches, washing lines, electrical wires, and other hazards.
- Do not modify the pool.
- Do not set up or use if you suspect any damage to the pool.

### INTENDED USE

---

- Use as a pool for dogs only.
- Use outdoors only.

### WARNINGS

---

- Not a toy.
- Not for use with children due to the risk of drowning. Keep away from children.
- Empty pool after every use.
- Never leave pool unattended in areas children can access.
- Do not leave your dog unattended while in the pool.
- Do not allow your dog to enter the pool if the water is cold to avoid a cold shock.
- Always consult with your veterinarian before use, especially if your dog is sick or has an open wound.
- Do not overfill the pool.
- Do not allow your dog to chew on the pool.
- Change the water as required to maintain hygiene.
- Do not tip to empty the water. Use the drainage outlet. You may tip to empty out residual water.

## WHAT'S INCLUDED

- ✔ Dog Pool (with Drainage Outlet)

## SETTING UP YOUR POOL

### STEP 1 - Scope Out a Spot

Pick an area to set up your pool. It should be level, grassy and pretty roomy.

### STEP 2 - Spread It Out

Now that you've picked a spot with plenty of room, unpack and unfold the pool, carefully spreading it out.

### STEP 3 - Just Add Water

Once set up, and with the drainage outlet securely closed, fill the pool with water slowly.

Don't leave unattended while filling.



## PUTTING IT AWAY

### STEP 1 - Drain the Water

Open the drainage outlet and let the water drain out.

**Do not tip. Only tip the pool to drain residual water.**

### STEP 2 - Stop, Dry and Fold

Let the pool dry completely before folding up to store it.



## STORING THE POOL

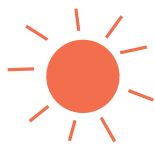
Once the pool is completely dry, you can store it away to keep things tidy.

- Store away from moisture and at room temperature
- Do not store near sharp objects
- Always keep the drainage outlet closed during storage

## CLEANING THE POOL

Make sure to change the water frequently. Only allow your dog in the pool if the water is clean.

- Warmer weather may require more frequent water changes
- The best cleaner is soapy water
- Do not use bleach or harsh cleaning agents



**QUESTIONS?**

CALL OUR FRIENDLY CUSTOMER SERVICE TEAM ANYTIME.  
WE'RE HERE 24/7! 1-800-67-CHEWY (672-4399)