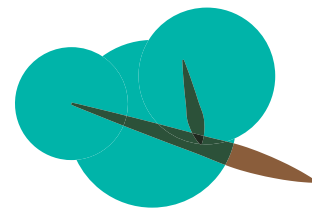
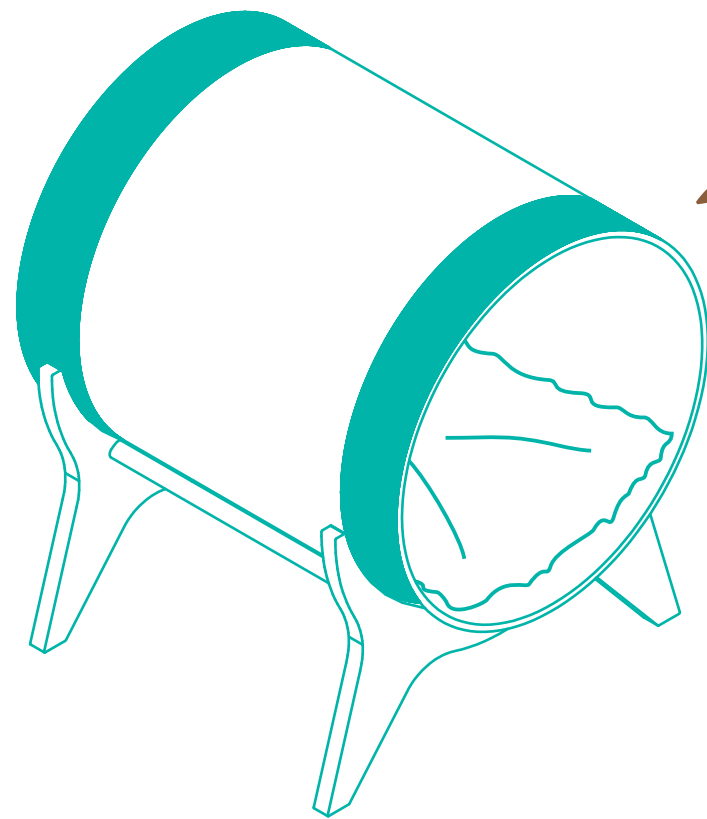
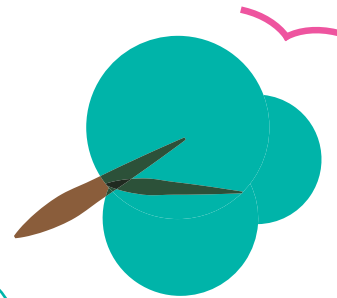
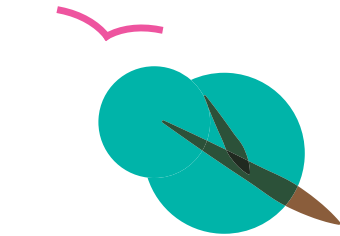
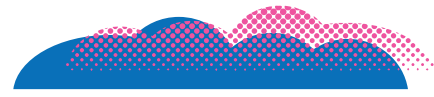


216x280mm



SKU# 214365  
OVERALL DIMENSIONS  
16.14 in L x 14.76 in W x 18.5 in H  
41 cm L x 37.5 cm W x 47 cm H

# MODERN TUNNEL ELEVATED CAT BED INSTRUCTION MANUAL

## WARNINGS & CAUTIONS

**PLEASE READ AND FOLLOW ALL WARNINGS AND INSTRUCTIONS TO AVOID PET INJURY OR PROPERTY DAMAGES.**

- Keep all tools and instructions in a safe place for future reference.
- Follow the instructions carefully and make sure you've completed each step.
- This elevated cat bed is intended for cat use only, please keep children away.
- Keep all small parts away from children / pets to avoid choking hazards.
- Elevated cat bed is for indoor use only, avoid placing in direct sunlight or damp areas.
- Check your elevated cat bed often for loose screws or parts that might need re-tightening.
- Discard cat bed if torn or damaged.

## GEAR UP

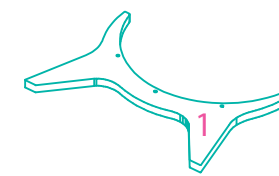
You'll need a Phillips head screwdriver (not included). Power tools not recommended.

## CLEANING INSTRUCTIONS

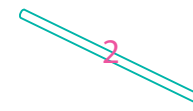
Spot clean stains and vacuum fur (using small handheld or attachment) when necessary.  
For removable cushion machine wash cold with like colors, gentle cycle. Do not bleach. Hang dry.

## COMPONENTS

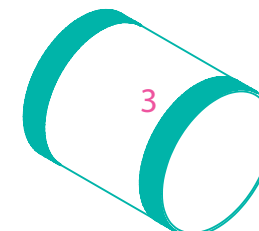
Prior to assembly, be sure to identify and sort all components shown below.



2PCS Stands



3PCS Dowels



1PC Tunnel



1PC Cushion

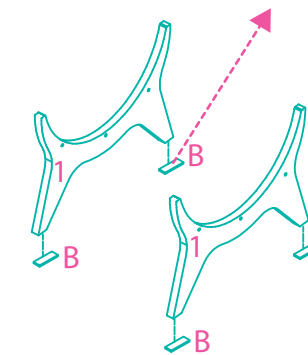
A M4 x 30mm Screw 6PCS

B 23mm x 18mm Non-skid Pad 4PCS

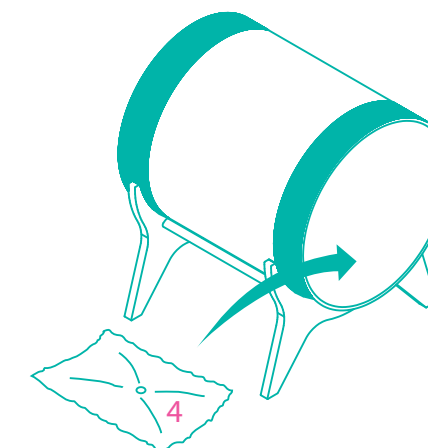
## ASSEMBLY INSTRUCTIONS

### STEP 1

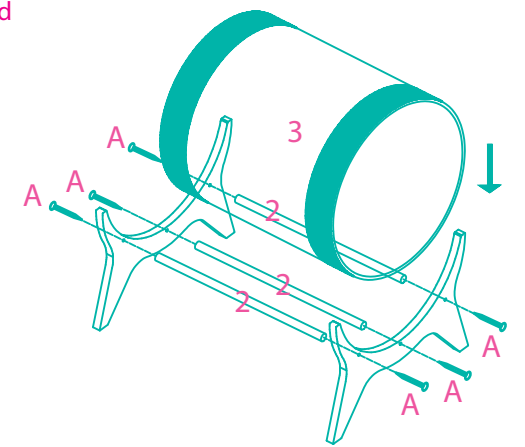
For non-skid pads attachment, peel the paper backing on the pad and press down firmly to adhere, repeat for other 3 pads.



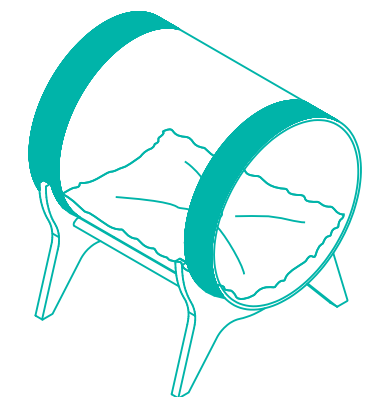
### STEP 3



### STEP 2



### FINISHED ASSEMBLY



Questions? Call our customer service 1-800-672-4399