

21cm

21cm



PEN TRAINING TIPS



INTRODUCTION

Introduce your pet to his new play area. Let him explore it first – on his own time. Don’t force him or rush the process. Remember, you want your pet to think of his pen as a positive, safe space of his own, so let his natural curiosity lead. If he seems reluctant, entice him to explore by putting a few treats and his favorite toy inside.



TIME

Acclimate him to it slowly. Once your pet is comfortable, get him used to the idea of staying in his pen little by little. At first, keep him inside the pen by sitting or standing in front of the open door while talking soothingly. Do this for a short amount of time, then gradually increase it. Eventually, close the door, leaving it closed for a short duration, increasing it gradually. Praise him and reward him with treats each time. Remember, positive associations!



BATHROOM

If using the pen indoors, take him out for regular potty breaks, away from his “playground” to do his business. And do it regularly. Smaller and younger animals especially need to be let out more frequently.



POSITIVE ASSOCIATION

Never put your pet in his pen as punishment. That creates negative associations and will make him reluctant to use it.



PROFESSIONAL HELP

Always consult your veterinarian or trainer with specific questions.

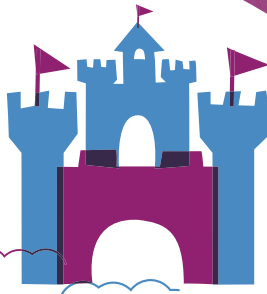
WARNINGS AND CAUTIONS

We care about the safety of your pet, so please READ AND FOLLOW ALL INSTRUCTIONS before using a new exercise pen. Improper use may result in serious injury or even the death of your pet.

- To prevent choking and other serious injuries, always remove any collars, tags or leashes from your pet before placing him in his pen.
- If your pet has never been kept in any enclosure, then specific training may be necessary for his safety.
- This exercise pen is not designed to restrain dogs who may jump onto or launch themselves into the side of the pen.
- Before your pet enters his exercise pen, make sure that it’s secure. Double check that the pen is properly assembled and that all all zippers and ground stakes are secure before leaving your pet inside his pen to play.
- If using the pen indoors, do not leave your pet inside his pen for too long. Remember, pets need time to socialize and go potty! Consult your veterinarian or trainer to determine the appropriate amount of time that your pet can safely and comfortably be left in his exercise pen.
- Always be sure your pet has had enough food and water before leaving him in his pen.
- Consult your veterinarian about whether it’s safe to leave food, toys or other items in the pen with your particular pet. They all have unique personalities and habits, so what works for one might not work for another.
- We know how excited pets can get, but do be sure to make sure his paws, snout, ears or tail aren’t in the way of the door zippers. Ouch!
- Never place your pet’s exercise pen in direct sunlight. Always make sure there is shaded area if placing the pen outside and provide water to your pet. Serious heat stroke or death could result from an overheated pet.
- While we are dedicated to providing the best for your pet, Chewy, Inc. is not responsible for any loss, damage, discomfort, injury, illness, death or costs of any kind as a result of or by use of this pen.

QUESTIONS?

CALL OUR FRIENDLY CUSTOMER SERVICE TEAM ANYTIME. WE’RE HERE 24/7! 1-800-67-CHEWY (672-4399)



SOFT-SIDED EXERCISE PEN
INSTRUCTION MANUAL

21cm

Using the Soft-Sided Exercise Pen

PARTS INCLUDED

- ✓ 1 Soft-Sided Exercise Pen
- ✓ 4 Ground Stakes
- ✓ 1 Mesh Top
- ✓ 1 Carry Bag

TO EXPAND THE PEN



STEP 1 - REMOVE THE PEN AND ELASTIC BAND
Unzip and remove the pen from the **bag**. Then, remove the **elastic band** holding the pen together.



STEP 2 - PLACE THE PEN
Place the pen **bottom side down** on a sturdy, flat surface and make sure you have enough room for it to expand fully.



STEP 3 - EXPAND THE PEN
Carefully push the panels outward until fully expanded into an octagonal shape. **HINT:** Push from the corners for easier expansion.



STEP 4 - ADDING THE MESH TOP
First, locate the **zipper end** on the top panel and the **zipper pull** on the pen. Then, insert the **zipper end** into the **zipper pull** and zip the panel on securely.

TIPS

THE DOORS

Both doors are zippered and can be rolled up and attached using the hook and loop tape. **HINT:** Make sure to roll the doors tightly so they stay attached firmly when rolled up.

OUTDOOR USE

To use the pen outdoors, locate the 4 loops at the base of the pen. Then, push the metal stakes through them and into the ground securely once the pen is fully expanded.

OPTIONAL WATER BOTTLE

This product can accommodate an optional water bottle with a spout. Push the bottle through the strap above the grommet, then feed the spout through the grommet.



21cm

TO FOLD THE PEN



STEP 1 - REMOVE ALL ACCESSORIES
Remove any **accessories** in the pocket or attached to the pen.



STEP 2 - UNROLL AND ZIP DOORS
Make sure the doors are zipped **closed**.



STEP 3 - REMOVE THE TOP
Unzip and remove the **mesh top**.



STEP 4 - POSITION THE ELASTIC BAND
Make sure the **elastic band** is positioned at the **far left** of the product before you start folding.



STEP 5 - FOLD THE PANELS TOGETHER
Push the back and front panels together, creating an "M" shape, making sure the elastic band, zip top, and fabric are **free of the folds**. **HINT:** Don't try to force the product to fold to avoid damaging the frame.



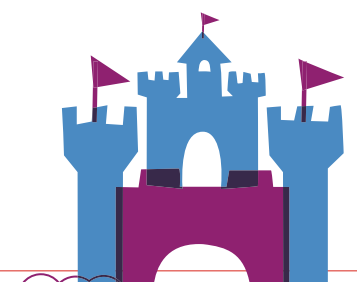
STEP 6 - PUSH THE PANELS TOGETHER
Pull up on the **bottom fabric** between the panels, then fold the **panels** together.



STEP 7 - FOLD ALL PANELS TOGETHER
Press the panels together and wrap the pen with the **elastic band**. Then, place the pen back in the **bag** with the **accessories**.

MAINTENANCE

To provide your pet with the most comfortable exercise pen possible, spot clean the soft exercise pen routinely with damp cloth.



28cm