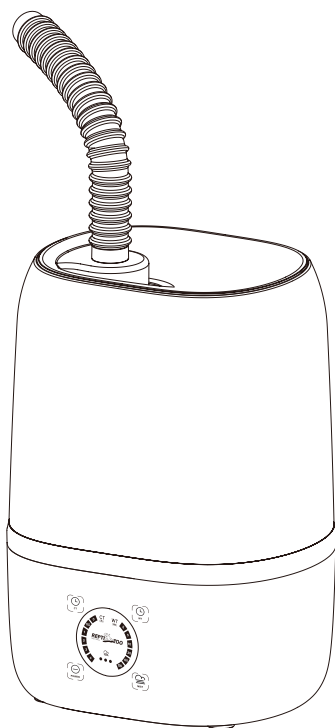


## DIGITAL TIMING HUMIDIFIER INSTRUCTION MANUAL



TF03

Thanks for choosing REPTIZOO digital timing humidifier. In order to use this digital timing humidifier properly and ensure its service life, please read the instruction manual carefully before using it.

## WARNING

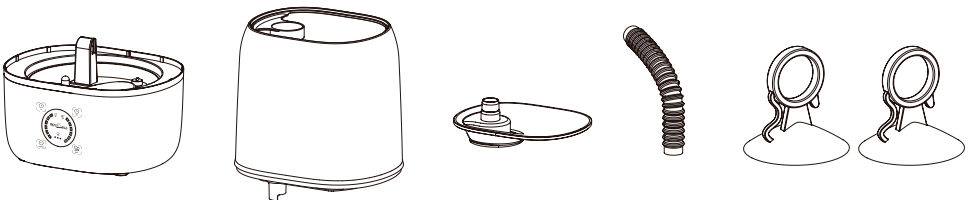
1. Check the power cable for damage, deformation or other defects before using, do not use the product in case there are any defects. It must be replaced by a special cord or assembly available from the manufacturer or its service agent.
2. Adjust the direction of flexible tube to prevent mist sprayed onto electronic products, such as heating bulbs.
3. The main engine and power adapter of this product shall be protected from liquid and shall not be immersed in liquid.
4. This appliance can be used by children aged from 8 years and above and persons with reduced physical, sensory or mental capabilities or lack of experience and knowledge if they have been given supervision or instruction concerning use of the appliance in a safe way and understand the hazards involved.
  - Children shall not play with the appliance.
  - Cleaning and user maintenance shall not be made by children without supervision.
5. Unplug the appliance during filling and cleaning.

## PRODUCT OVERVIEW

TF03 is a digital smart product specially designed for reptiles humidifying. It controls the frequency, time and amount of mist by adjusting the CT, WT and Mist volume during a certain period of time to provide a suitable humidity environment for reptiles terrarium.

## PRODUCT LIST

1. Main engine: 1 pc
2. Water tank: 1 pc
3. Lid: 1 pc
4. Flexible tube: 1 pc
5. Sucker: 2 pcs
6. Instruction manual: 1 pc



**PRODUCT FEATURES**

- 1. This product uses the intermittent timing principle for repeated periodic humidification, and can also be used with humidity controller for constant humidity.
- 2. The bucket is designed with a water-adding structure to facilitate water addition and dirt cleaning, which can prevent the growth of bacteria with certain procedures.
- 3. The hollowed-out lid design allows water to directly enter the bucket while the lid is closed.
- 4. The 4L large-capacity visualized bucket can always guarantee a long-term continuous humidification based on the water volume.
- 5. The control panel adopts electronic touch technologies, providing sensitive keys and fast response.
- 6. The display adopts LED digital tube display technologies, realizing low power consumption and long service life.
- 7. Its running is ultra-quiet. The adjustment of fog amount has 3 gears, and the power will be automatically cut off in case of water shortage, which is safe and reliable.
- 8. The fan adopts quick-release interface for easy maintenance and overhaul.
- 9. The air inlet uses a highly permeable activated carbon filter sponge to effectively improve the air quality.
- 10. Press and hold the Mist button to enter the Sleep mode, and press any button to exit the mode automatically. The operation is simple and more user-friendly.

**TECHNICAL PARAMETERS**

- 1. Product size: 200x162x277mm
- 2. Input voltage: 100-240V~ 50/60Hz
- 3. Power: Max.25W
- 4. Mist output: Max.300ml/h
- 5. CT control range: 0~4 hours
- 6. WT control range: 2~120 minutes
- 7. Noise: ≤35 decibel

**BUTTON FEATURES AND DISPLAY INTERFACE DESCRIPTION**

- 1. Button features description:



**POWER**  
Turn the power on or off.



**CT**  
Adjust the frequency of humidification in hour.

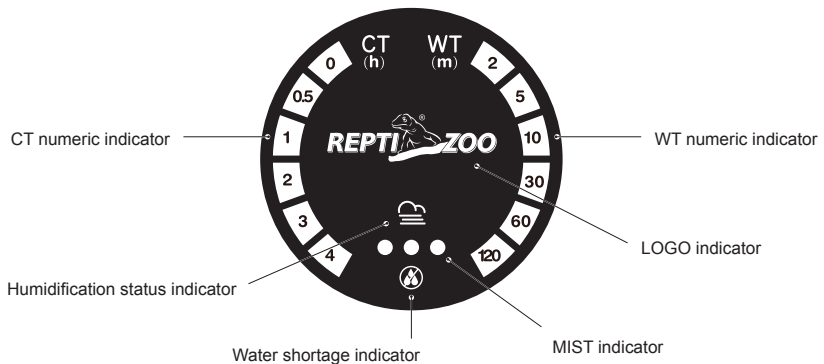


**WT**  
Adjust the continuous working time of each humidification in minutes.



**MIST**  
Control the mist output  
Long press for three seconds to enter the Sleep mode.

## 2. Display interface description:



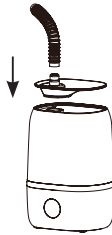
- **MIST indicator:**  
It displays the currently set output of mist and there are three indicators, respectively representing three different gear positions.
- **CT numeric indicator:**  
The indicator shows the currently set humidification interval and there are six indicators, each with a different time value in hours.
- **WT numeric indicator:**  
The indicator displays the current humidification working time and there are six indicators, each with a different time value in minutes.
- **Humidification status indicator:**  
The indicator indicates whether the current humidifier is humidifying. If the humidifier is fogging, this indicator will light up; otherwise, it will go out.
- **LOGO indicator:**  
The indicator displays the product brand, and it is always on when the power is on.
- **Water shortage indicator:**  
With insufficient water, the indicator will turn red and start to flash.

## 3. Other notes:

- **Quick start function:**  
There is no need to press Power to start the device after the humidifier is plugged in. This function can be accompanied by a humidity controller under the condition of CT = 0.
- **Water shortage alarm:**  
In the case of water shortage, the water shortage indicator will be on, accompanied by the buzzer alarm, which will stop after three buzzers.
- **Invalid operation alarm:**  
Under the condition of CT=0, the WT indicator will go out. If you press the WT button, two “beeps” remind you that the operation is invalid.
- **Sleep Mode:**  
Long press MIST for 3 seconds to enter the Sleep mode. At this time, the entire screen will stay off. After pressing any key, the screen will wake up and automatically exit the Sleep mode. In this mode, if there is a shortage of water, the water shortage indicator will only flash and the buzzer will not give an alarm.

## USAGE METHOD

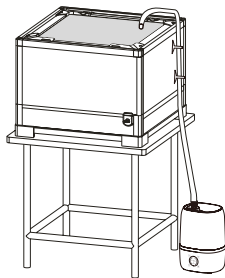
1. Take the humidifier out of the box and place it on the flat floor next to the Terrarium, and take out the lid, sucker, flexible tube and other accessories from the water tank.
2. Fasten the lid on the tank and insert the flexible tube into the mist outlet of the lid.



3. Install two suckers on the flexible tube and stretch it to an appropriate length.

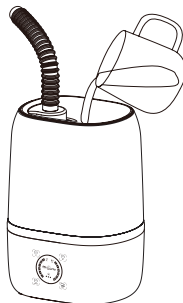


4. Attach the sucker on the side or back of the terrarium, and direct the flexible tube towards inside.



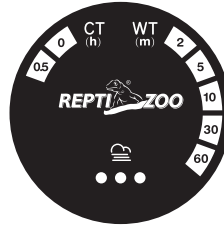
Notes:  
Minimize the bending of flexible tubes.  
Excessively curved flexible tubes will  
accumulate water, which may damage  
the fan after backflow.

5. Add clean water from above the lid, or add water quickly after removing the lid.

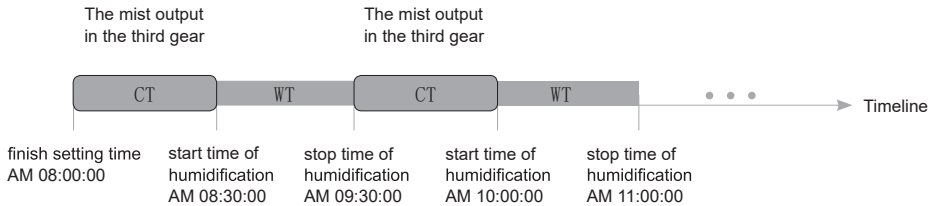


6. Plug in the outlet that meets the specifications and set appropriate parameters for the CT, WT, and Mist according to the actual requirement.

E.g.:  
 CT=0.5 hour  
 WT=60 minutes  
 MIST=third gear  
 finish setting time at AM 8:00:00



After the above settings, the humidifier works as follows:



Note: To keep its regularly use and life span, it is recommended that humidifier continuous spraying time should not exceed 6 hours.

## PRECAUTIONS

1. Please review the instructions carefully and follow the safety instructions before using this product.
2. Check whether the power line is damaged or deformed before use. If there is any similar situation above, it is recommended not to use it. Testing and servicing should be operated by the manufacturer or its service agent or related professionals to avoid accidents.
3. This product is for indoor use only. Do not install or store the device in an environment exposed to the sun, rain or freezing temperatures.
4. This product should be placed on a flat yet firm ground or platform to prevent short circuit caused by water storage in the base of the main machine because of the tilt.
5. Before connecting the device, confirm the voltage first. It can only be connected to the power with 100-240V~50/60Hz.
6. This product is only suitable for adding clean water, and the water temperature should not exceed 40 degrees Celsius. Please do not add chemicals, detergents, etc. into the water tank or the base of the main machine, otherwise it will easily cause atomization malfunctions.
7. During the use, please do not move it around, and do not pull the wire directly. Otherwise it may cause accidents.
8. This product cannot be arbitrarily dismantled to avoid electric shock or other malfunctions. Meanwhile, all accessories are not recommended for other purposes, which may cause insecure factors.
9. If there is something wrong with the product, please do not repair on your own. If you have any problems, please feel free to report it to us.
10. The water tank and atomizing base should be cleaned once in 2-3 weeks to avoid the occurrence of scale after long-term use and have a bad influence on the atomization effect. When cleaning, wipe with a soft cloth dampened with a small amount of detergent and rinse with clean water.
11. Wipe the scale on the atomizer plate with a cotton swab and then rinsed with clean water.
12. This product cannot be installed separately by children. When using humidifiers, young children must be supervised and guided by guardians.
13. The manufacturer shall not be responsible for any damage to the product and any accidents caused by the user's failure to comply with the above requirements.

## TROUBLE SHOOTING

1. The screen is not bright. No wind and no mist:
  - Check whether the switch of the electric socket is turned on.
  - Check whether the power cord plug is completely inserted.
  - Unplug the power cord and wait for 3 seconds before plugging it in.
2. The humidification indicator is on but no mist:
  - Check whether the atomizer plate breaks down.  
Observe whether there is continuous emission of mist from the atomizer plate in the base of the main machine. If there is no mist, something goes wrong with the atomizer plate. Contact the supplier or agent for maintenance.
  - Check whether the fan fails.  
Cut off the power, unscrew the ventilation cover on base and remove the fan, then turn on the power to see if the fan is workable. If it does not work, please contact the supplier or agent to replace the fan.
3. The humidification indicator is on, but mist output is small:
  - Check whether the atomizer plate is filthy.
  - Check whether the water is dirty or stores too long.
  - Check whether the fan is working.
4. After adding water, the water shortage indicator is always on:
  - Check whether there is water in the atomizing base and the height is over 1cm.
  - Check whether the valve of the water tank and the assorted springs are plugged with foreign matters.

**Dongguan ETAN Pet Supplies Co.,Ltd.**

No.59,Liantang Road,Sanzhongcun,Qingxi Town,  
Dongguan,Guangdong,China,523651

Tel: **86- 769- 87841199**

Tmall: **reptizoo.tmall.com**

Overseas Sales: **postmaster@repti-zoo.com**

China Sales: **market\_one@repti-zoo.com**

**www.repti-zoo.com**

