



# Get Started!



# Creekside Ceramic Pet Fountain

## Before we start: Care instructions

To keep providing fresh, clean water for your pet, remember these three simple tasks:

### Refill often.

Keep the water level up. The pump is designed to work in at least one inch of water. The pump can fail if it runs dry.

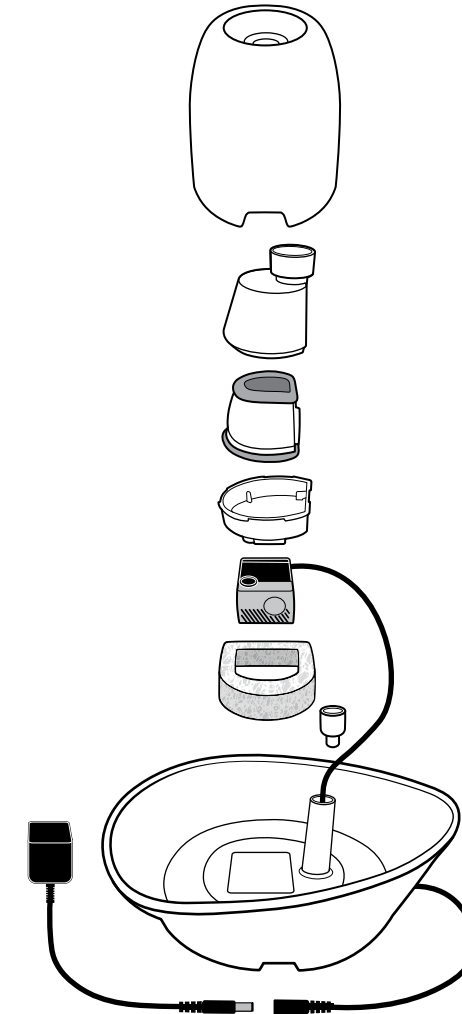
### Clean your pump and your fountain.

Take your pump and fountain apart to clean with soap and water every two to four weeks. Be careful not to get soap in the filters, as it will not rinse out. The plastic filter housing, ceramic bowl, and ceramic tower (except the silicone gasket) are dishwasher safe.

### Replace your filters.

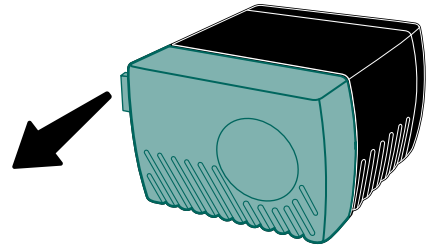
Replace the carbon filter every two to four weeks when you clean your fountain. Replace the foam filter every one to two months.

## What you have:

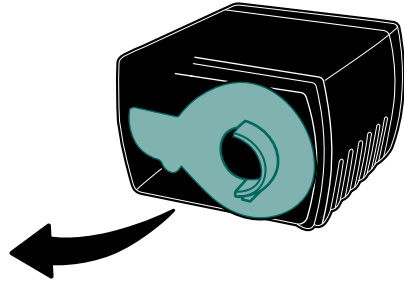


# Setup instructions

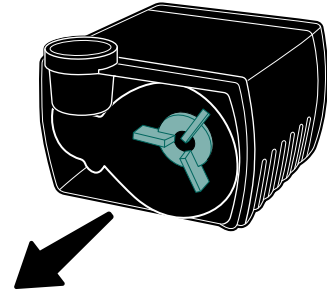
## 1 Clean the pump before you assemble the fountain:



Remove the faceplate.



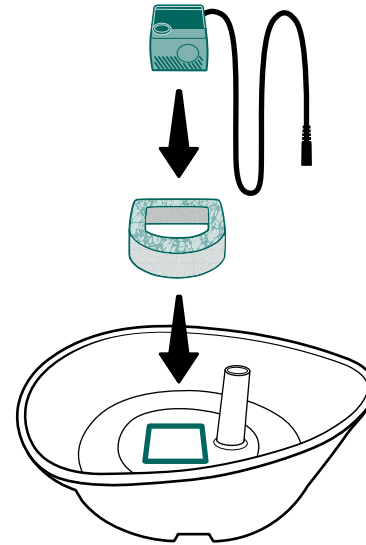
Remove the stator.



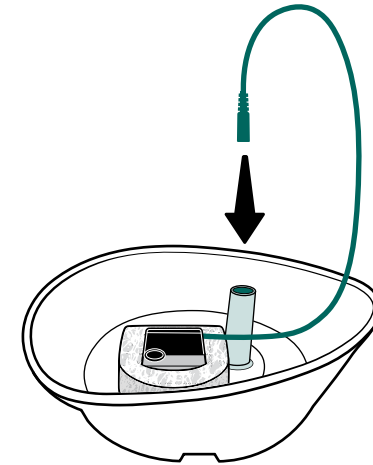
Remove the impeller.

Wash these parts with soap and warm water, then put the pump back together. Rinse all parts of the fountain in cold water except the cord and power adaptor.

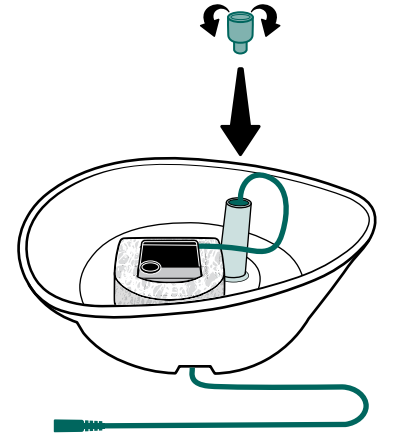
## 2 Install the foam filter and the pump:



Insert the pump into the foam filter and set both down into the square inside the bowl. Press down so the suction cups attach.

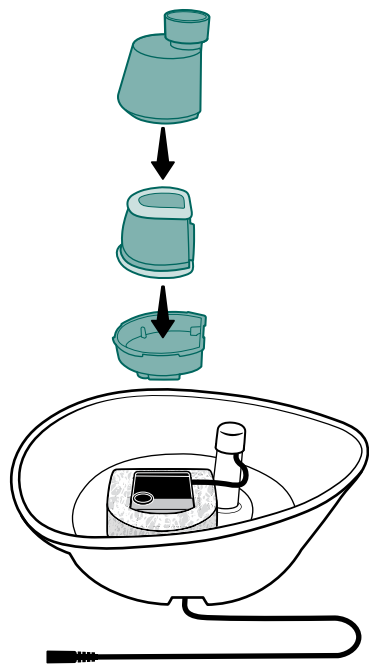


Feed the cord down into the tube and out through one of the notches on the bowl's base.

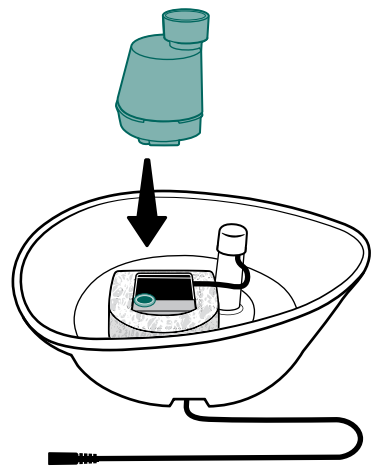


Insert the silicone cap and fold its top edge down over the top of the tube. This holds the cord in place and prevents leaks.

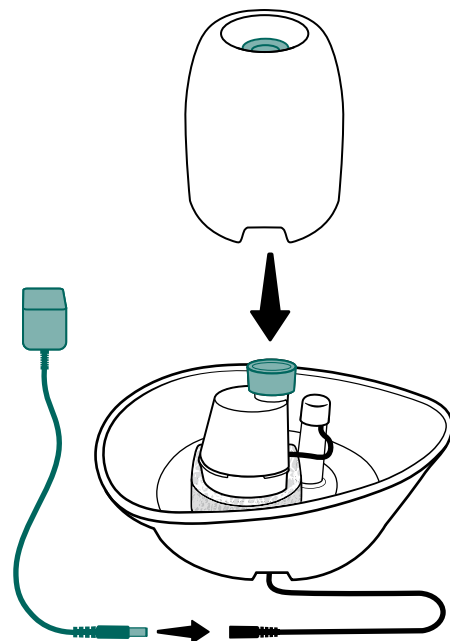
### 3 Install the carbon filter and the tower:



Rinse the carbon filter with cold water, set it into the filter housing and close.

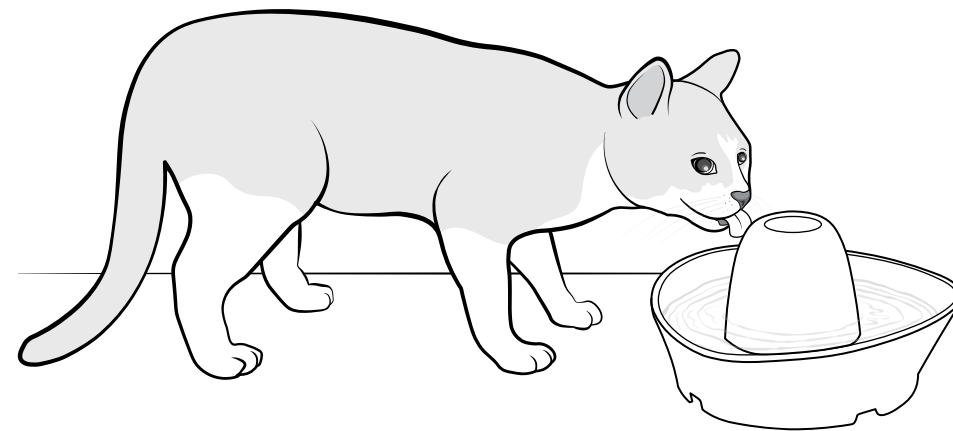


Insert the filter housing into the opening on top of the pump.



Set the tower down over the filter housing and press down on the silicone gasket to form a seal. Connect the power adaptor.

## Use instructions



Place the fountain where your pet will use it. Fill the bowl with water, leaving a half inch of space between the water and the rim. Make sure your hands, the cord and the power adaptor are dry, then plug the fountain into an outlet.

If your pet is hesitant to use the fountain at first, try leaving the fountain unplugged until your pet is comfortable drinking from it.

**Keep health and happiness flowing!**



## Let us help!

For questions or additional tips:

+1 (800) 732-2677

[petsafe.com](https://petsafe.com)