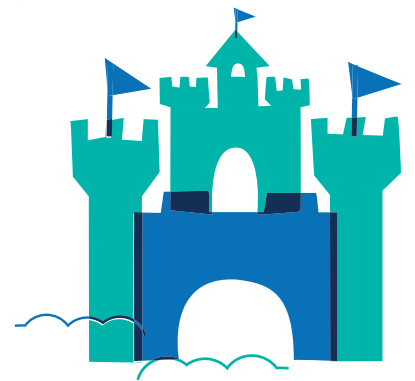


**frisco.**  
better pet goods



FOR SAFETY, REMOVE LEASH AND COLLAR  
BEFORE YOUR PET ENTERS THE CRATE.



# ALL-IN-1 MULTI-STAGE 3 DOOR COLLAPSIBLE WIRE DOG CRATE

## INSTRUCTION MANUAL



PARTS INCLUDED

- ☒ Folded Crate

☒ Plastic Pan

☒ Divider Panel

☒ Floor Grid

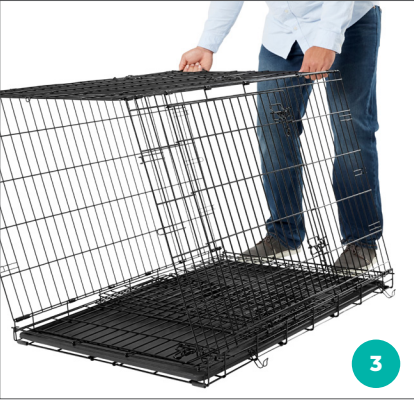
☒ Carrying Plastic Handle - the handles included with this crate are repositionable and can be used for transporting an unassembled crate.

DOG CRATE ASSEMBLY INSTRUCTIONS

Assembly instructions for Frisco All-in-1 Multi-Stage 3 Door Collapsible Wire Dog Crate models 247915, 247916, 247917.



**STEP 2** (a) Set the floor grid aside. (b) Unhook the two side hooks and unfold the crate like a book.



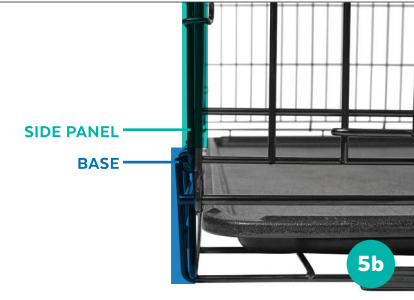
**STEP 3** With both hands, grab and lift the top panel. You will see the crate start to take shape.



**STEP 4** Pull the back panel all the way out and lay it flat outside the crate.



**STEP 5** (a) Pull up the front panel and secure it with the side and top clips.



(b) The side panels should rest inside the base of the crate as indicated.



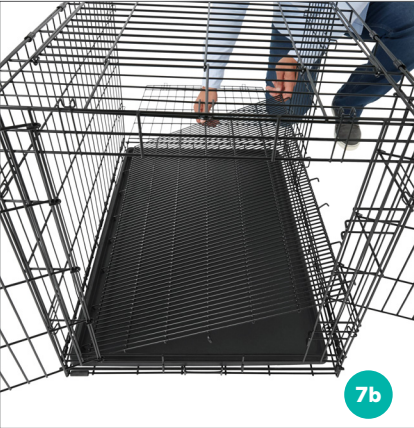
**STEP 6** Open the front and side doors. Remove the divider panel from the crate.

FLOOR GRID INSTRUCTIONS

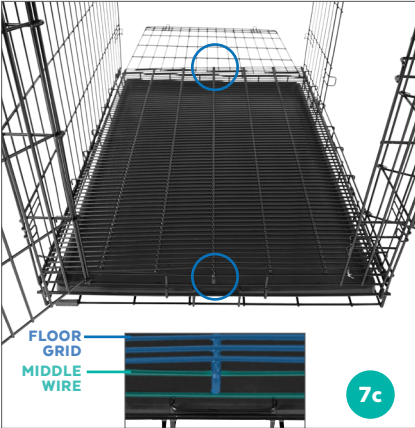
This crate includes a floor grid to use while potty training a puppy weighing up to 30 lbs. Once your puppy is potty trained, you should remove the floor grid.



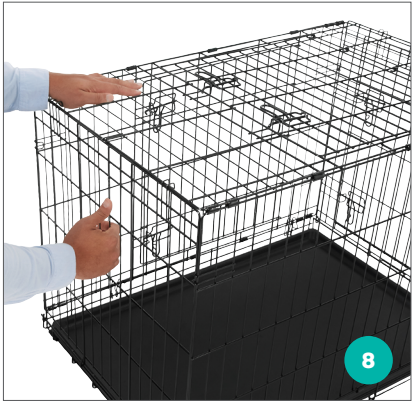
**STEP 7** (a) Insert the floor grid through the back of the crate.



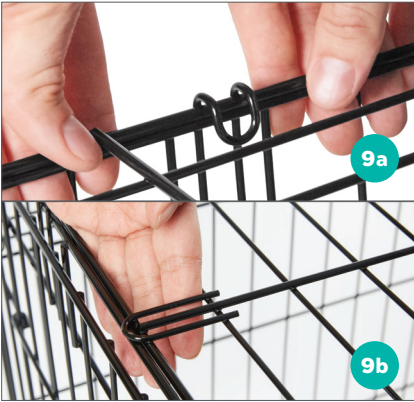
(b) With the side door open, fit the side hooks on the floor grid over the BOTTOM wire on the regular side panel first, then over the BOTTOM wire on the side door panel.



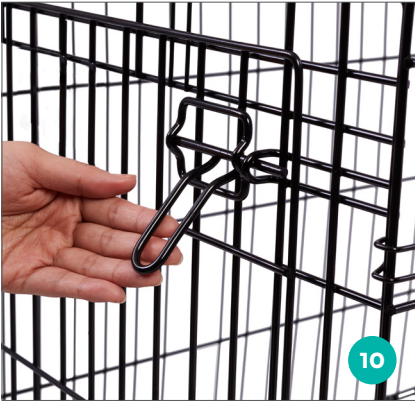
(c) Then, fit the floor grid hooks over the MIDDLE wire on the front and back panel and make sure the floor grid is level.



**STEP 8** Push the back panel into the crate, then pull it back into place and secure it with the side and top clips. Make sure to fit the hook on the floor grid over the BOTTOM wire on the back panel.



**STEP 9** (a) To secure the door panel, pull it forward and then push down on the top panel. Position the u-shaped hooks on top of the door panel over the wire on the top panel. (b) The center horseshoe(s) should rest on top of the door panel. Repeat this process to secure the back panel.



**STEP 10** To open and close the door(s), lift the lock handles at about a 90-degree angle on the panel door and slide to open, and into the lock to close. To disassemble, reverse the process.

DIVIDER PANEL INSTRUCTIONS

Our crates are designed to provide a safe, comfortable space for your pet. Think of it as his very own castle! Usually, dogs won't do their business in the same area where they sleep, but if the crate is too large, they may choose to go potty in one end and sleep in the other. To avoid this, use the divider panel to shorten the length of the crate so it's the right size for your pet.

**STEP 1** First, determine the proper length the crate should be for your pet. He should have enough room to stand up without hunching, turn around comfortably and stretch his legs out fully, but no larger than that (See Weight Recommendations).



**STEP 3** Stand the divider panel up at the desired position and attach the hooks securely to a vertical wire on one side, then slightly pull the side panel in to attach the hooks on the other side.

**HINT:** The divider panel and floor grid should not be used together. Using the divider panel with the floor grid may damage the protective coating on the floor grid.

**NOTE:** If the crate has a side door, hook the divider panel onto the door's vertical wire. In this case, the side door will not operate while the divider panel is in use.

As your dog grows, you can adjust the length of the crate by adjusting the divider panel. Remove the divider panel when your pet is fully grown.

PLASTIC PAN INSTRUCTIONS



**STEP 1** From the front of the crate, lift the pan above the pan-locking latch, then push the pan-locking latch inward under the pan.



**STEP 2** Remove the pan by sliding it out toward you from the front of the crate. Reverse steps to reinsert pan and reengage the pan-locking latch.



## FINAL ASSEMBLY CHECKLIST

Before introducing your pup to his new castle, remember to double-check the following:

- Check that the side panels are resting inside the base of the crate.
- If you aren't using the divider panel, make sure it is removed from the crate.

## NOTE:

- Never put your pet into his crate without the pan in place or the pan-locking latch engaged.
- Please do not attempt to remove or reinsert the pan in any other way than the one described here or it may break or be damaged.
- Never remove or replace the pan while your pet is in the crate.

To order a replacement pan, call 1-800-67-CHEWY or visit [www.chewy.com](http://www.chewy.com).

## WEIGHT RECOMMENDATIONS

For your pet's safety, please follow the recommended weight limitations for each crate model. Never use a crate for a pet that exceeds the maximum stated weight.

**MEDIUM 36 in** (36in x 24.5in x 26.5in) (91.4cm x 62cm x 67cm) **41 to 70 lbs** (18.6-31.8 kg)

**LARGE 42 in** (42in x 28.5in x 30in) (106.7cm x 72.4cm x 76.2cm) **71-90 lbs** (32.2-40.8 kg)

**X-LARGE 48 in** (48in x 30.5in x 32.5in) (122 cm x 77.5cm x 82.6cm) **91-110 lbs** (41.3-49.9 kg)

**NOTE: The floor grid is designed to support one puppy up to 30 lbs.**

## MAINTENANCE

To provide your pet with the most comfortable "castle" possible, clean his crate routinely with a mild, non-toxic cleaner and water.

## CRATE TRAINING TIPS

### INTRODUCTION

Introduce your pet to his new home. Let him explore it first – on his own time. Don't force him or rush the process. Remember, you want your pet to think of his crate as a positive, safe space of his own, so let his natural curiosity lead. If he seems reluctant, entice him to explore by putting his favorite toy inside.

### TIME

Acclimate him to it slowly. Once your pet is comfortable, get him used to the idea of staying in his crate little by little. At first, keep him inside the crate by sitting or standing in front of the open door while talking soothingly. Do this for a short amount of time, then gradually increase it. Eventually, close the door, leaving it closed for a short duration, increasing it gradually. Praise him and reward him with treats each time. Remember, positive associations!

### DENNING

Appeal to your pet's instinct as a denning animal. Help him associate

his crate with a den (or a castle) of his own by creating the safe space where all his basic needs are met. And make it comfy for him by placing a towel, bed or blanket at the bottom.

### BATHROOM

Take him out for regular potty breaks. Wild animals don't do their business in their dens. Reinforce this natural instinct in your pet by taking him outside, away from his "castle" to do his business. And do it regularly. Younger animals especially need to be let out more frequently.

### POSITIVE ASSOCIATION

Never put your pet in his crate as punishment. That creates negative associations and will make him reluctant to use it.

### PROFESSIONAL HELP

Always consult your veterinarian or trainer with specific questions for crate training your pet.

## WARNINGS AND CAUTIONS

**We care about the safety of your pet, so please READ AND FOLLOW ALL INSTRUCTIONS before using a new crate.**

**Improper use may result in serious injury or even the death of your pet.**

- To prevent choking and other serious injuries, always remove any collars, tags or leashes from your pet before placing him in his crate.
- You can transport your pet in his crate for short distances inside the home, but not for long distances. Please use a carrier specifically designed for the purposes of pet long-distance transport.
- This crate is not designed to restrain aggressive breeds of dogs who may thrash and launch themselves inside the crate. Consult your veterinarian for recommendations on restraining aggressive pets.
- Before your pet enters his crate, make sure that it's secure. Double-check that the crate is properly assembled, all screws are tightened, and all locks are secure before leaving your pet inside his crate.
- It's never a good idea to leave your pet inside his crate for too long. Remember, pets need time to socialize, exercise and go potty! Consult your veterinarian or trainer to determine the appropriate amount of time that your pet can safely and comfortably be left in his crate.
- Make sure that your dog's paws are large enough that they won't slip through the bars in the floor panel.
- Always be sure your pet has enough food and water before leaving him in his crate.
- Consult your veterinarian about whether it's safe to leave food, toys or other items in the crate with your particular pet. They all have unique personalities and habits, so what works for one might not work for another.
- Never place multiple pets into one crate.
- Never use the crate without its metal tray properly fitted and secured, and be sure not to place your pet into a crate with a damaged tray.
- Please, never allow your children to play in, on, or around the crate.
- We know how excited pets can get, but do be sure to make sure his paws, snout, ears or tail aren't in the way of the door hinge or latch. Ouch!
- Never place your pet's crate in direct sunlight or store your crate outside or in a car, because the metal can become very hot. Never leave your pet in a closed car on a hot day. Serious heatstroke or death could result from an overheated pet.
- While we are dedicated to providing the best for your pet, Chewy, Inc. is not responsible for any loss, damage, discomfort, injury, illness, death or costs of any kind as a result of or by use of this crate.