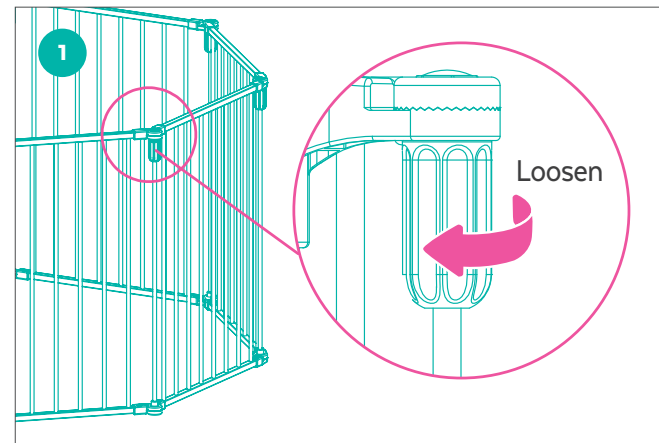


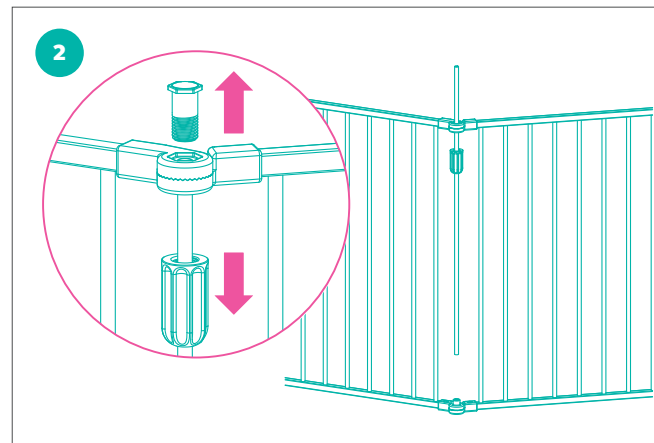
MAKE IT YOURS (AND THEIRS)

REMOVING PANELS

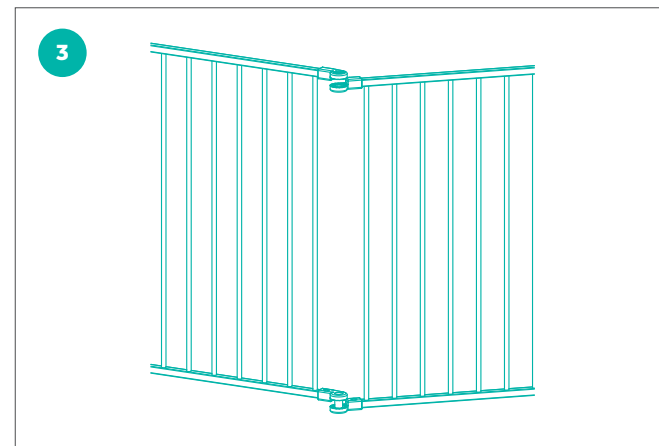


STEP 1 Select the panel to be removed and fully loosen the lock nuts on each side. Repeat until the desired number of panels has been removed. Decisions, decisions...

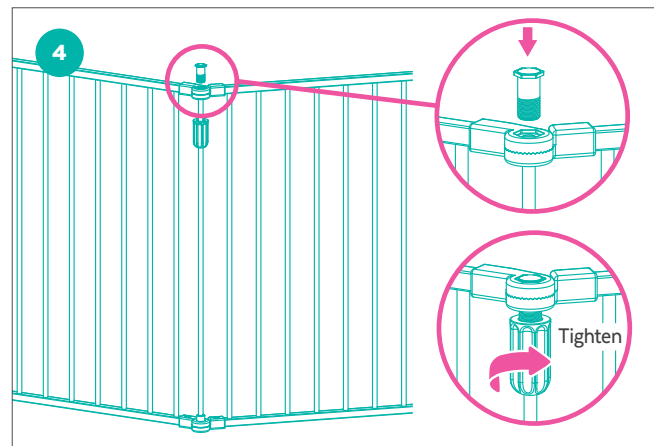
NOTE: it's easiest to start at the door panel and work your way around when removing panels.



STEP 2 Remove the lock bolt on the top opening of the upper connectors and then remove the pipe holding the panels together. Repeat for each side.



STEP 3 Set aside the panel, pipe and hardware. Then, close the open ends of the enclosure. Full circle...or whichever shape you choose!



STEP 4 Replace the pipe, lock nut and lock bolt. Then, tighten the lock nut to secure the enclosure again.

NOTE: The door panel should not be removed.

STOW & GO

FOLDING THE GATE

STEP 1 Loosen, but do not fully remove, all the lock nuts between each panel enough to allow the gate to fold.

STEP 2 Fully loosen one lock nut. Then, remove the pipe, lock nut and lock bolt.

STEP 3 Pull the open ends of the gate apart, then fold the gate at each corner and store. Voila!

NOTE: Replace the pipe, lock nut and lock bolt for easy storage.

CLEANING TIP

- Wash with mild detergent. Don't use any abrasive cleaners or bleach.

WARNINGS AND CAUTIONS

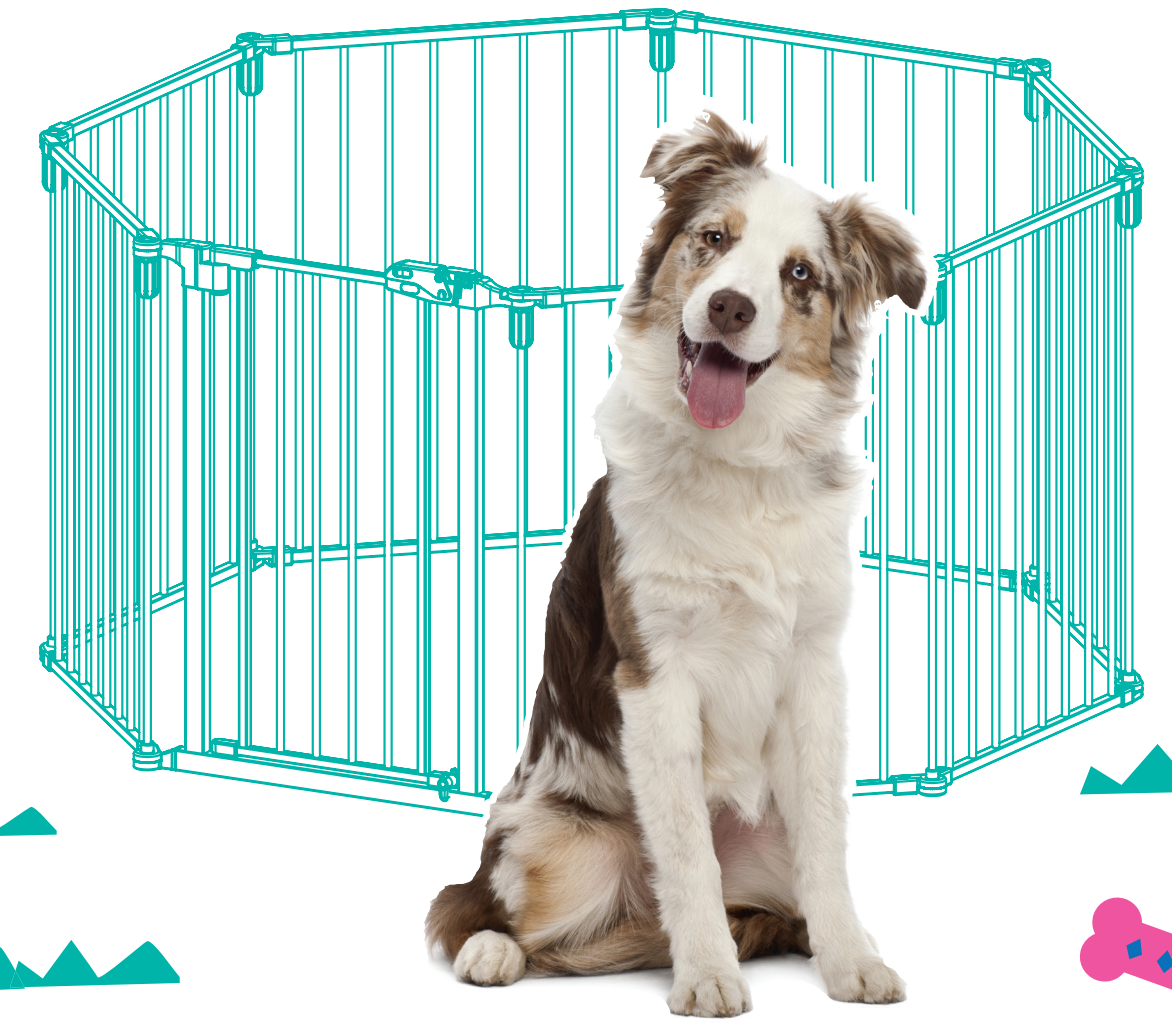
Please read all warnings and instructions thoroughly before assembling.

- FOR PET USE ONLY. NOT FOR USE WITH CHILDREN.
- This product will not necessarily prevent all accidents.
- Only assemble as directed and using all required parts. If installed improperly, the gate could become unstable or dislodged from the doorway.
- Never leave pet unattended. Stop using if/once your pet can climb over or push the gate loose.
- Use only with the locking/latching mechanism securely engaged.
- Never use at top of stairs.
- Do not use as a barrier to pool.
- Additional or replacement parts should only be obtained from the manufacturer or distributor.
- Always ensure the gate is resting against the floor before beginning installation.
- If assembling onto a surface other than drywall or wood, please consult with a professional for proper installation.
- Do not assemble or use if any components are missing or damaged.
- Check the gate regularly to ensure all hardware and mountings are tightened.
- Keep these instructions handy for further use.

QUESTIONS?

CALL OUR FRIENDLY CUSTOMER SERVICE TEAM ANYTIME.
WE'RE HERE 24/7! 1-800-67-CHEWY (672-4399)

frisco.
better pet goods



SKU# 250602,
250603, 250604

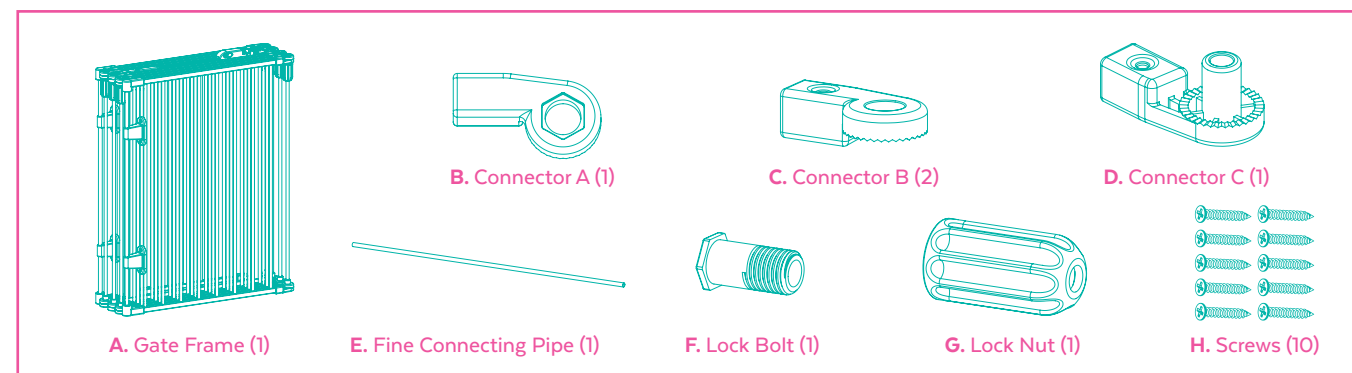
8-PANEL GATE

INSTRUCTION MANUAL

FOR PET USE ONLY

GET SET

Prior to assembly, please be sure to identify all parts shown below.



THE TOOLS FOR THE JOB

Aside from the included parts, you'll also need:

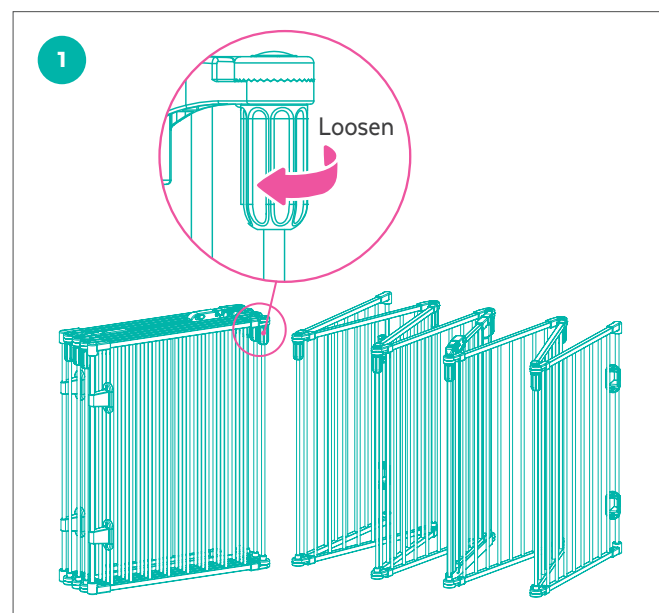
C. A Phillips head screwdriver* D. A buddy (optional)



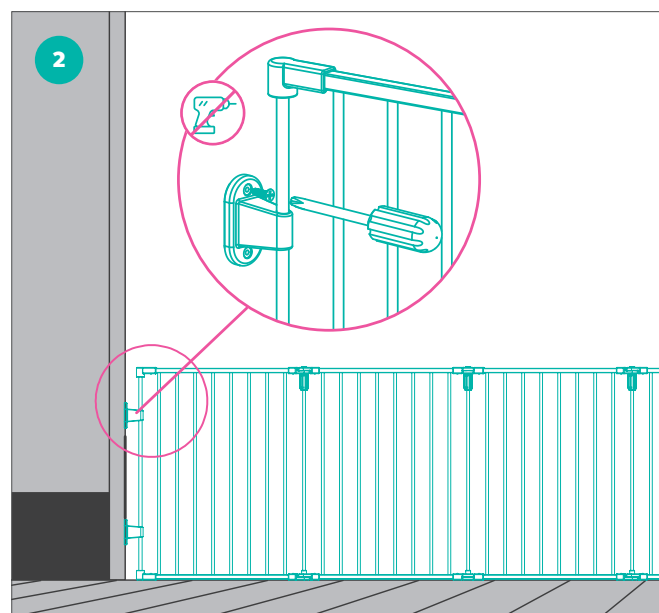
*No power tools allowed!

FIRST GOES THE GATE

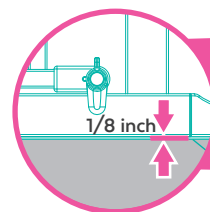
INSTALLING THE GATE



STEP 1 Bring the gate to the installation area. Loosen the lock nuts on both sides of the door panel to allow the gate to unfold freely. Do not fully remove the lock nuts. Unfold the gate and set it up in the installation area. Pat yourself on the back!

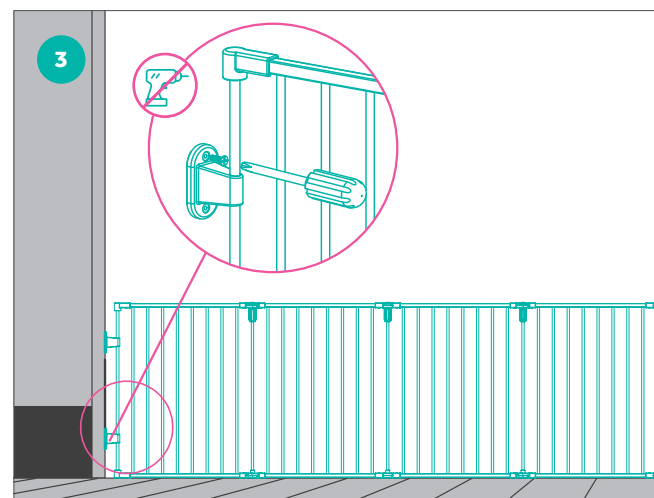


STEP 2 Fix one of the top wall mounting brackets (attached to the gate) to the wall using a Phillips head screwdriver and two screws. Repeat for the other top wall mounting bracket, making sure the gate is even across the opening.

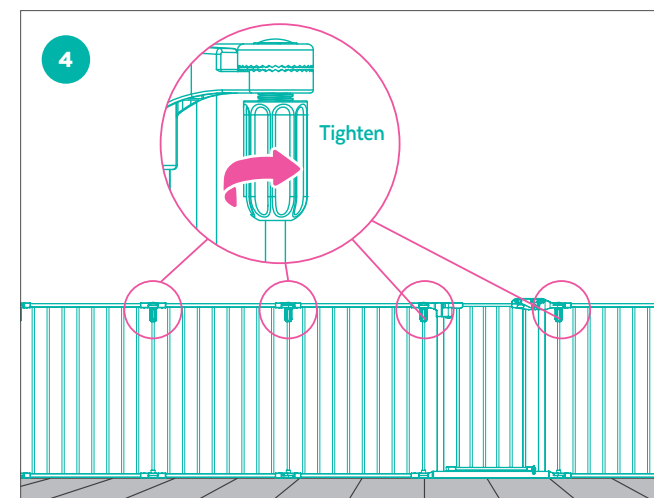


NOTE: The bottom of the gate should be no more than 1/8 of an inch from the floor.

For questions, please call 1-800-672-4399.



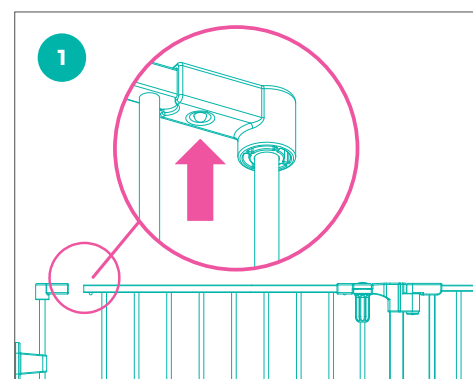
STEP 3 Straighten the bottom of the gate to make sure it isn't leaning, i.e. tipping forward or backward, then repeat the installation process for both bottom wall mounting brackets.



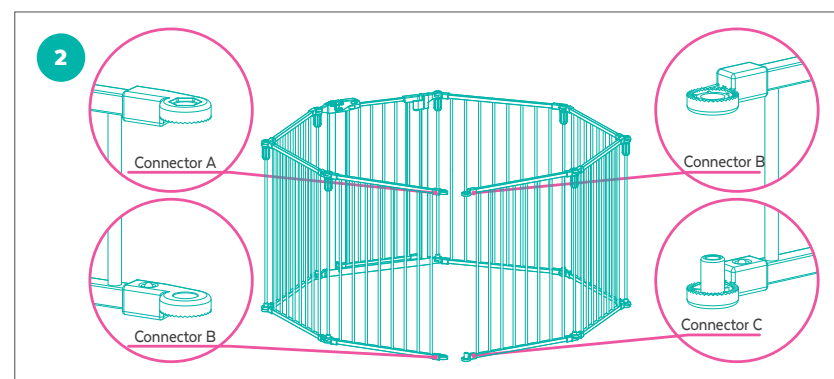
STEP 4 Tighten the lock nuts between every panel to lock the gate in place. Time for a treat break!

A ROOM ALL THEIR OWN

ASSEMBLING THE GATE AS AN ENCLOSURE

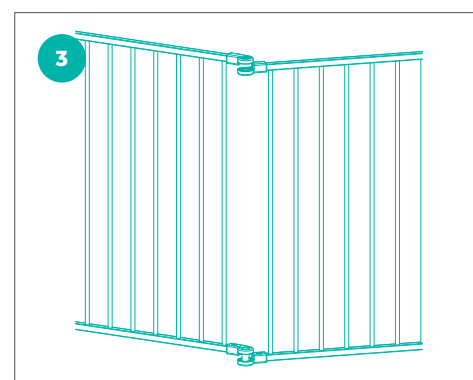


STEP 1 Locate the bars with the wall mounting brackets attached to both ends of the gate. Press the spring buttons down on the connectors, remove each end bar and store them for later use.

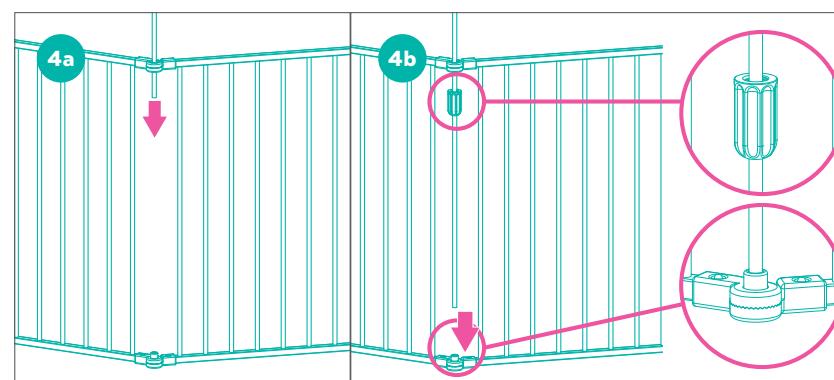


STEP 2 On the top bar of one side of the gate, install Connector A. Install (1) Connector B on the bottom bar. On the opposite side, install (1) Connector B on the top bar. Install Connector C on the bottom bar.

NOTE: Make sure the spring buttons are secured in the holes on each connector.

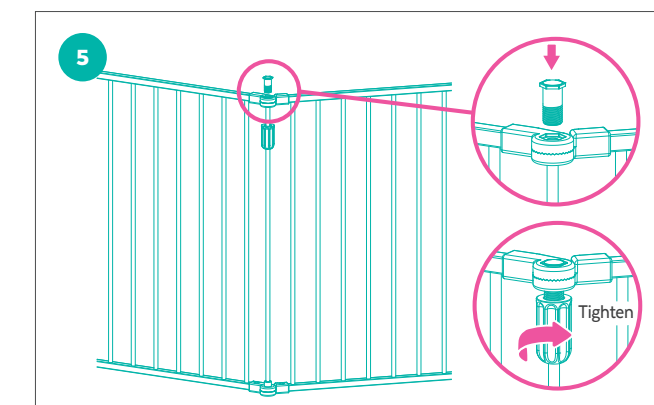


STEP 3 Position the enclosure in your preferred configuration and bring the open ends together at the plastic connectors. Sit. Stay. We're halfway there!

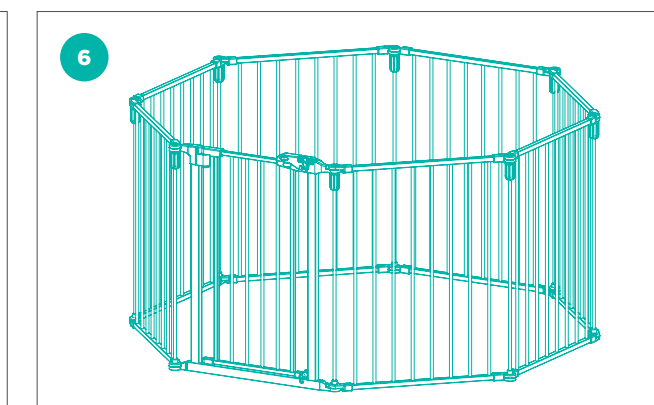


STEP 4a Locate the Fine Connecting Pipe and Lock Nut. Insert the pipe through the upper connectors on the open ends of the gate. **4b** Thread the lock nut onto the pipe between the top and bottom bars with the flat side facing up. Then, guide the pipe into the circular housing on the bottom connectors.

For questions, please call 1-800-672-4399.



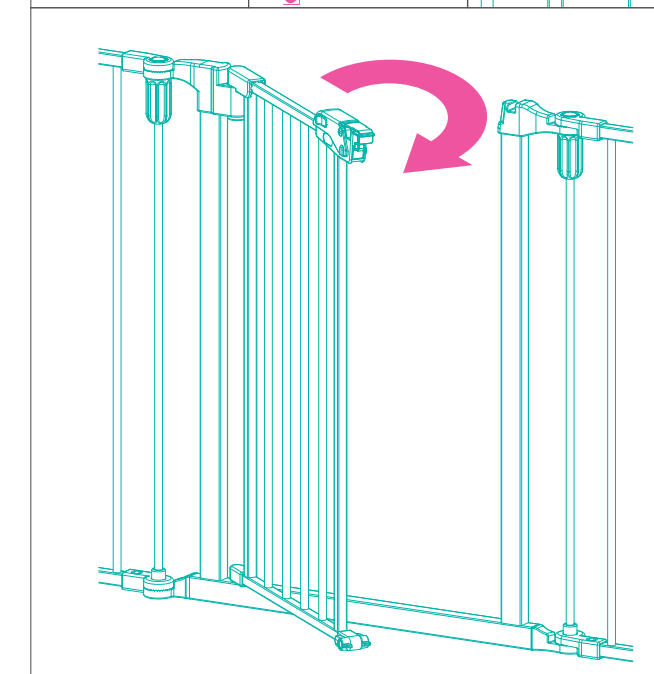
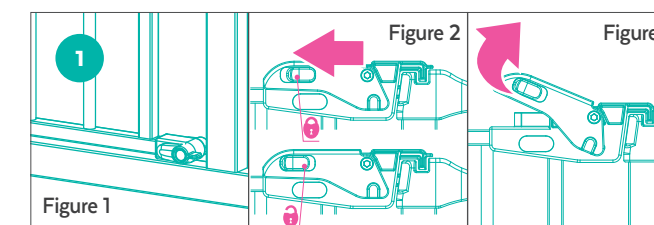
STEP 5 Locate the Lock Bolt. Insert it through the top opening in the upper connectors. Move the lock nut up to the joint created by the upper connectors and tighten it. From gate to pen, just like that!



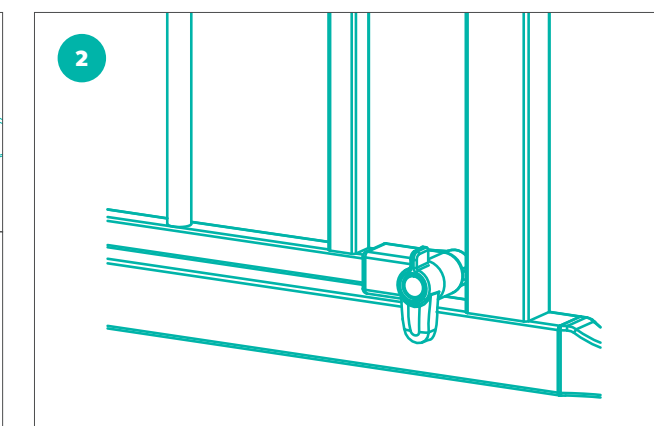
STEP 6 Work your way around the enclosure, tightening the lock nuts between every panel to lock the enclosure in place. Woof. Now it's really time for a treat break.

OPEN DOOR POLICY (OR NOT)

OPERATING THE DOOR, LATCH AND BASE LOCKS



TO OPEN Make sure the base locks are in the horizontal position (figure #1). Pull the spring lock away from the easy open latch (figure #2) and lift the lock lever upwards (figure #3) at the same time to release it. Then, pull the gate open. Neat, amirite?



TO CLOSE Pull the door shut and make sure the top latch closes. Move the bottom lock on the side occupied by your pet (aka their new chill spot) to the down position.

NOTE: If one of the base locks is in the down position, the gate will only swing open toward the lock. If both are down, the gate will not open in either direction.

NOTE: The gate will automatically close if left open less than 90°. Now isn't that handy!

For questions, please call 1-800-672-4399.