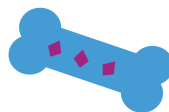
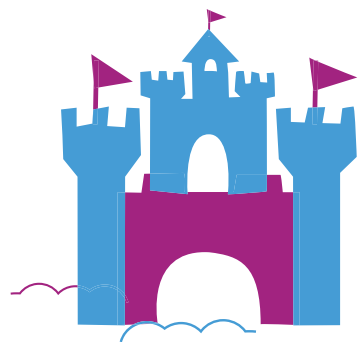
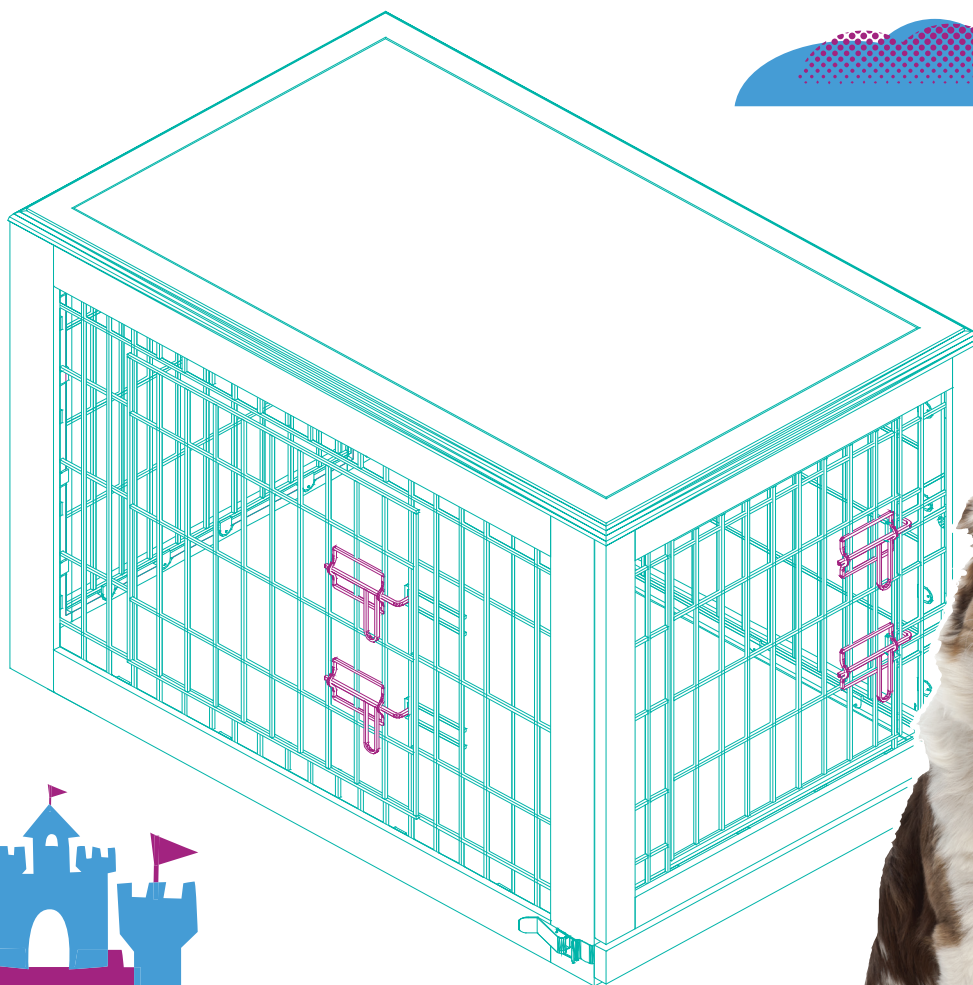
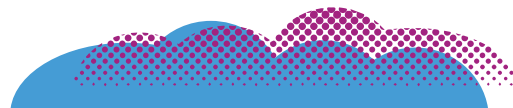
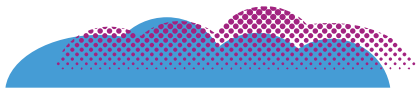




**frisco.**  
better pet goods



FOR SAFETY, REMOVE LEASH AND COLLAR  
BEFORE YOUR PET ENTERS THE CRATE.

SKU# 253026, 253030, 253034

# 36" WOODEN CRATE

## INSTRUCTION MANUAL

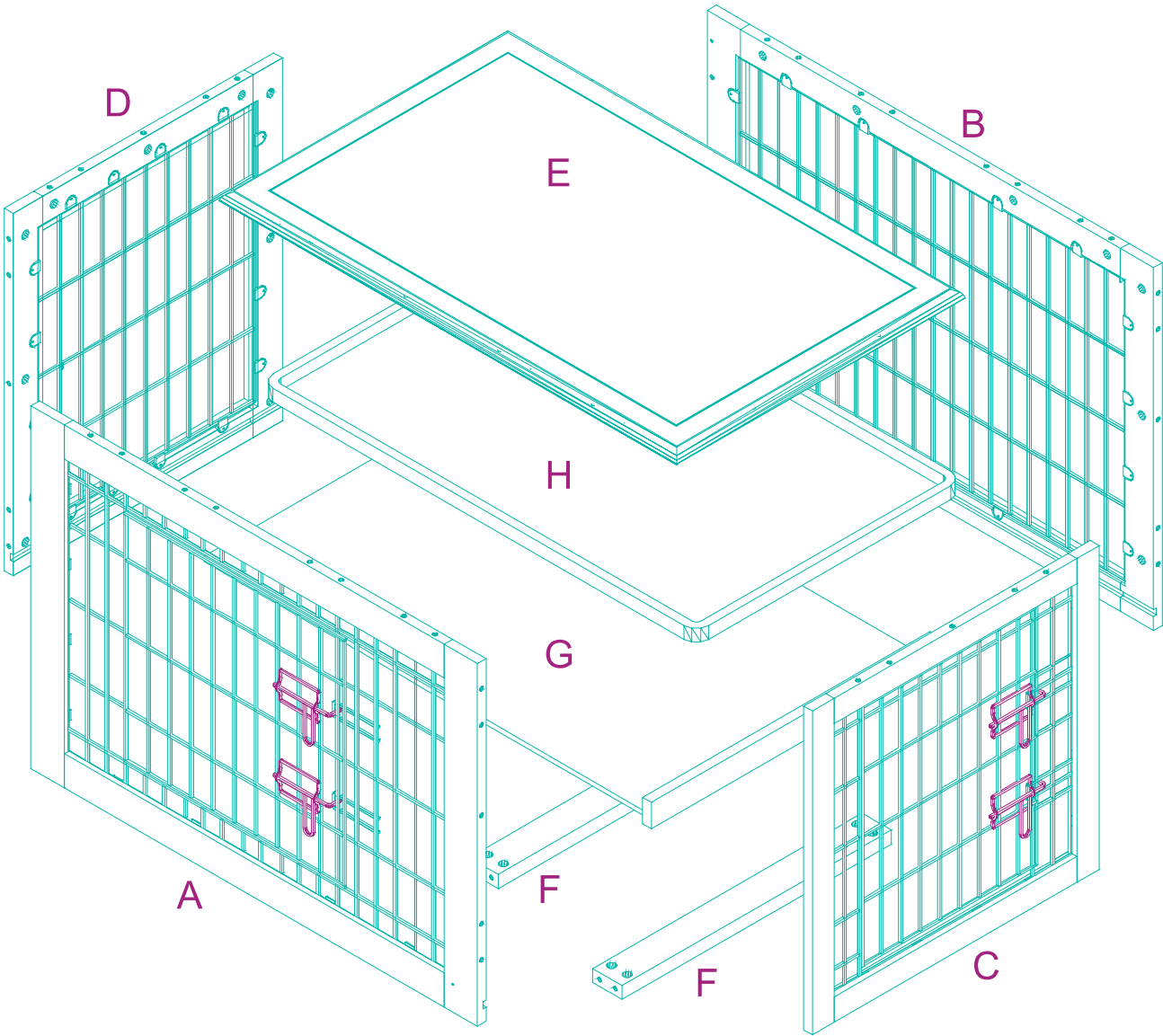
FOR PET USE ONLY

BEFORE ASSEMBLY

- ✓ Read all instructions and confirm all parts are included before starting assembly.
- ✓ Aside from the included parts, you'll also need a Phillips head screwdriver.  
There are no power tools needed.
- ✓ Do not tighten all bolts and screws completely until the entire crate has been assembled and set up.
- ✓ Although this crate can be assembled by one person, we recommend enlisting a friend for easier assembly.
- ✓ To avoid misplacing hardware components, we recommend opening and placing hardware on the pan while assembling the crate.



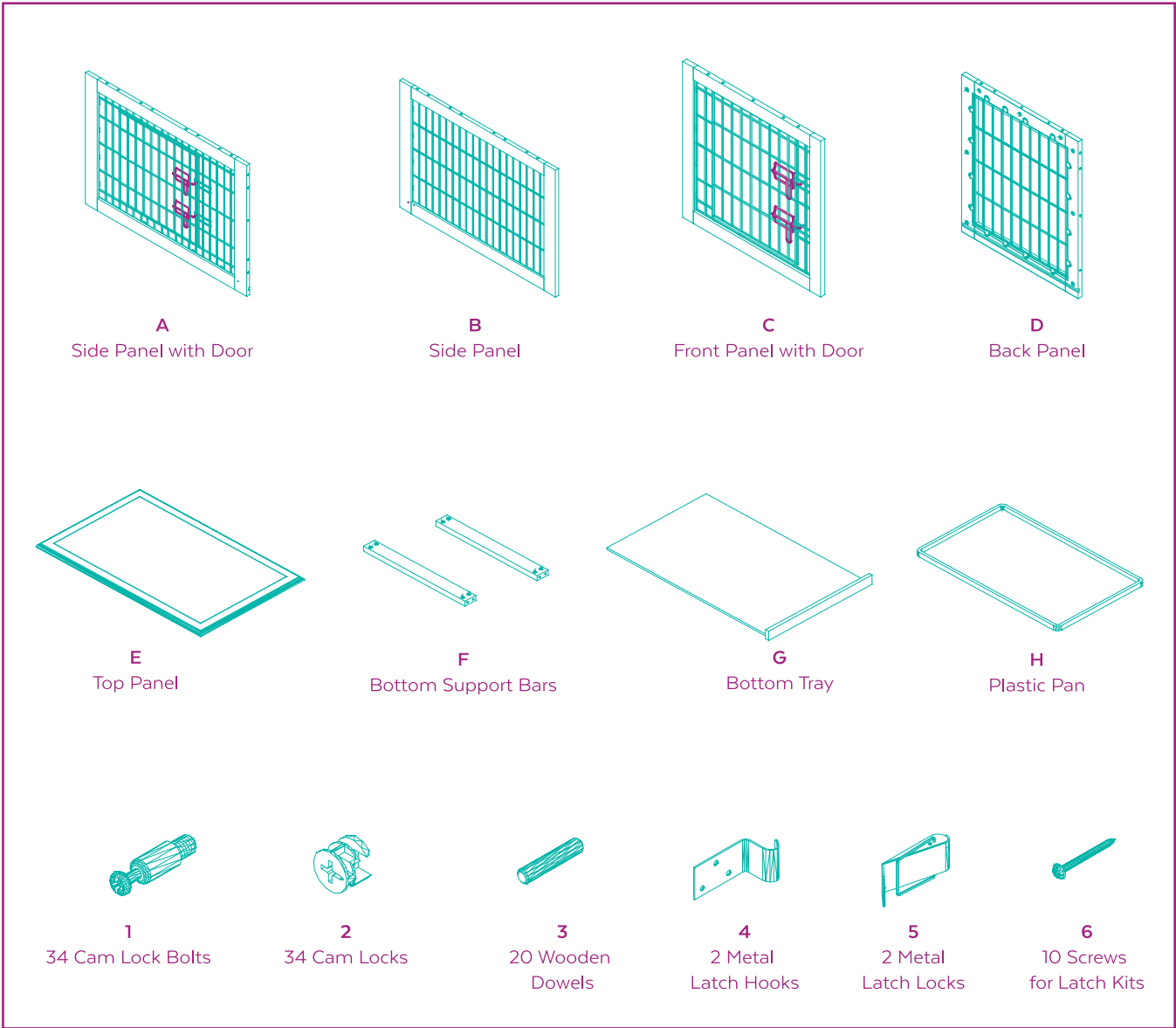
OVERVIEW



For questions, please call 1-800-672-4399.

PARTS INCLUDED

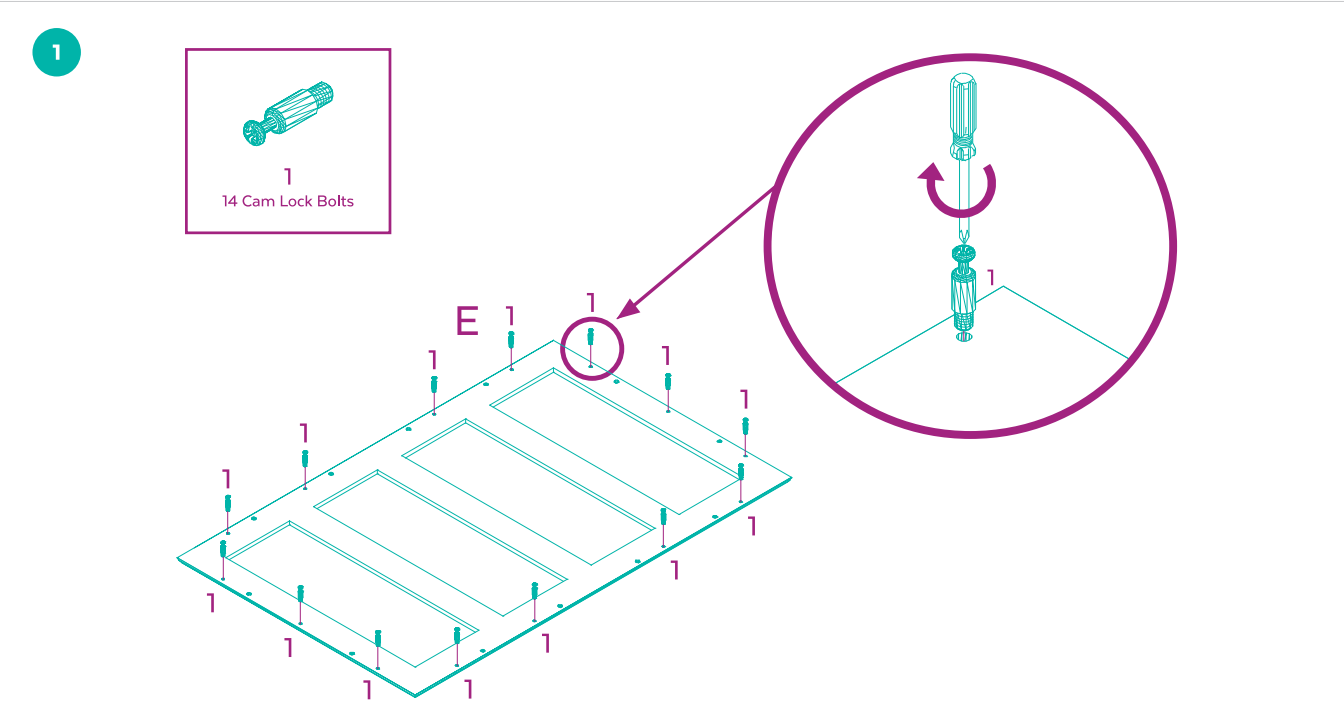
Prior to assembly, please be sure to identify and sort all parts shown below.



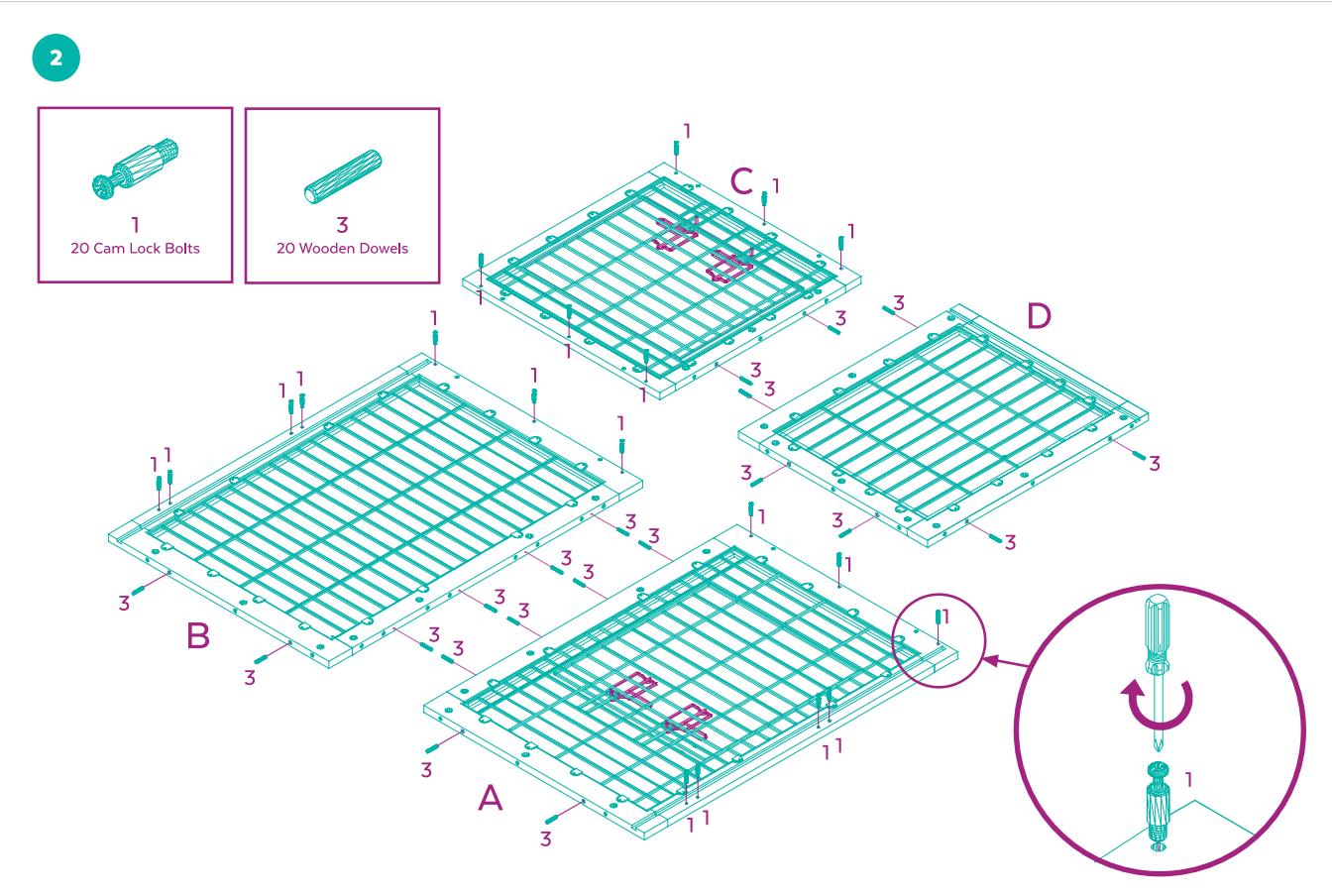
**Intermediate Wooden 36-in Crate:** 36.8 in L x 23.2 in W x 26 in H (93 cm L x 59 cm W x 66 cm H)

For questions, please call 1-800-672-4399.

# 36" WOODEN CRATE ASSEMBLY INSTRUCTIONS

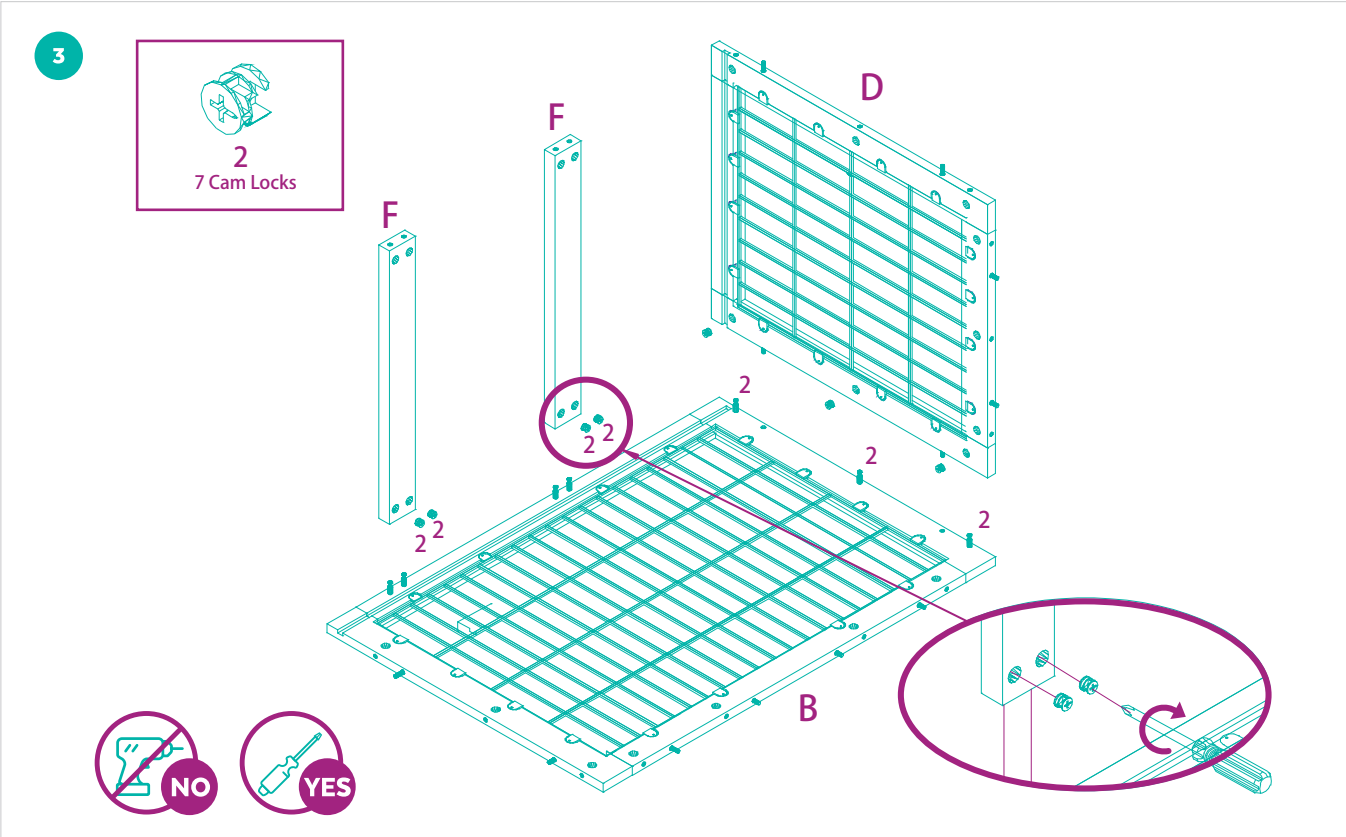


**STEP 1** Screw the cam lock bolts (hardware #1) into the pre-drilled holes on the top panel. The cam lock bolts go into the SMALLER holes.



**STEP 2** Screw the cam lock bolts (hardware #1) into the pre-drilled holes in panels A, B, C and D. The cam lock bolts go into the SMALLER holes. Install the wooden dowels (hardware #3) in panels A, B, C and D. The wooden dowels go into the LARGER holes.

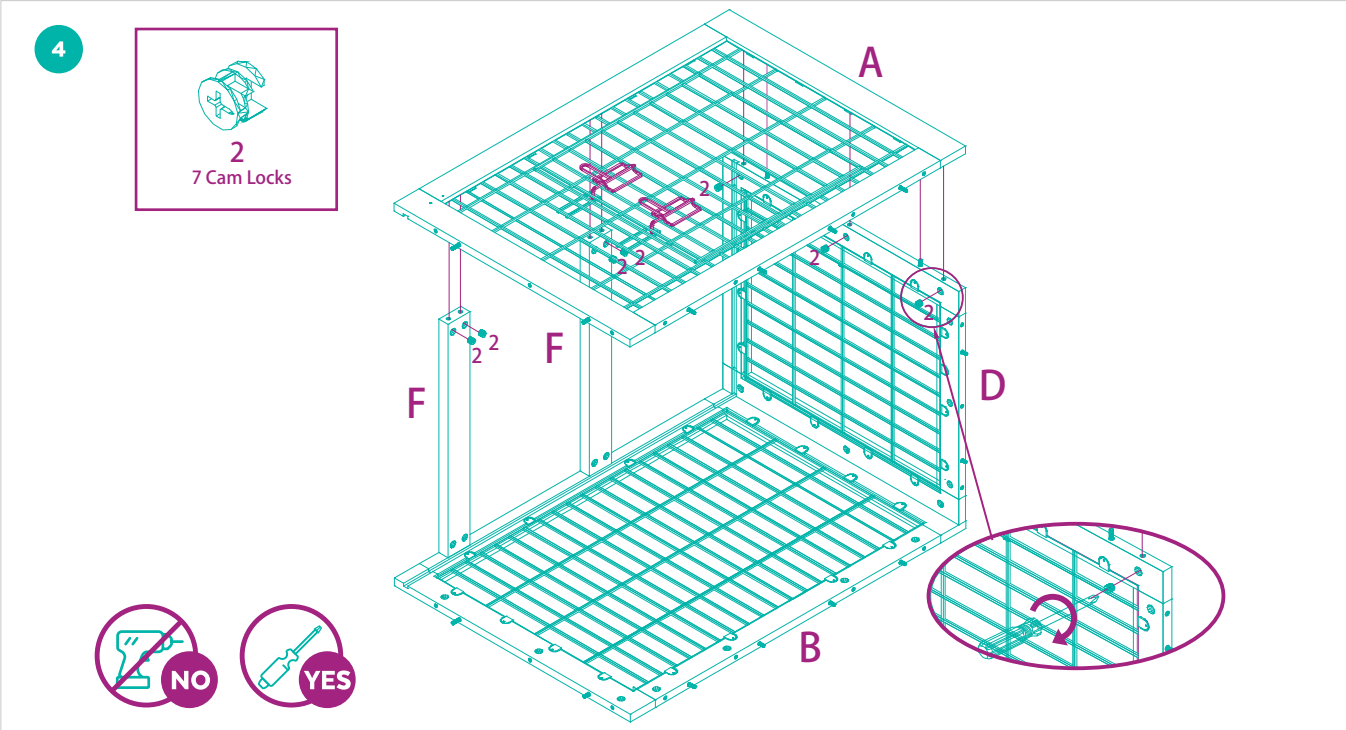
For questions, please call 1-800-672-4399.



**STEP 3** Attach the back panel (panel D) to the side panel (panel B) by aligning the cam lock bolts and wooden dowels with the corresponding holes. **HINT:** The semi-circle wire connector found on the wire mesh and cam locks should always be on the inside of the crate.

Connect the panels with cam locks. Make sure the X on the cam lock is facing the inside of the crate. Insert and tighten the cam locks with a Phillips head screwdriver. Attach the 2 bottom support bars (F) to the side panel (panel B). **HINT:** The holes for cam locks go on the inside of the crate.

Insert and tighten the cam locks with a Phillips head screwdriver.

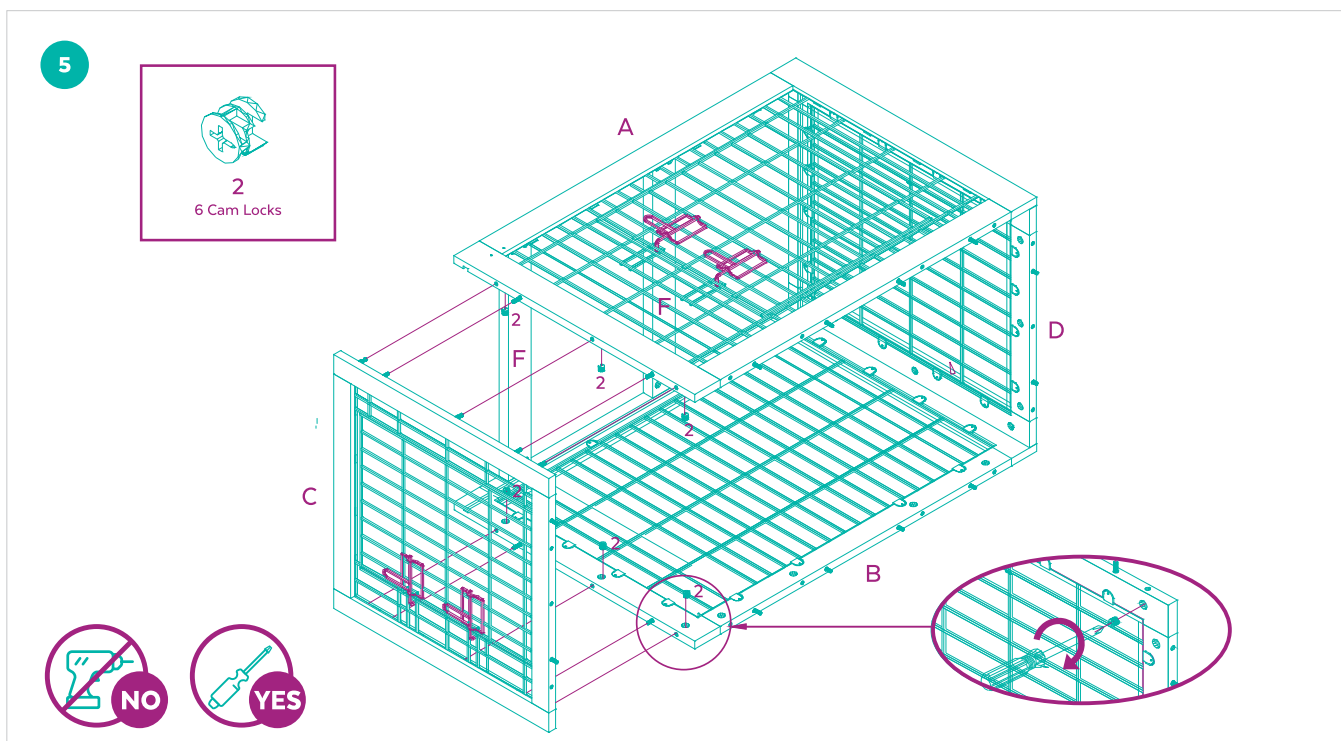


**STEP 4** Attach the side door (panel A) to the back panel (panel D) and the 2 bottom support bars (F) by aligning the cam lock bolts and wooden dowels into the corresponding holes. **HINT:** Make sure the door locks are on the outside.

Insert and tighten the cam locks with a Phillips head screwdriver.

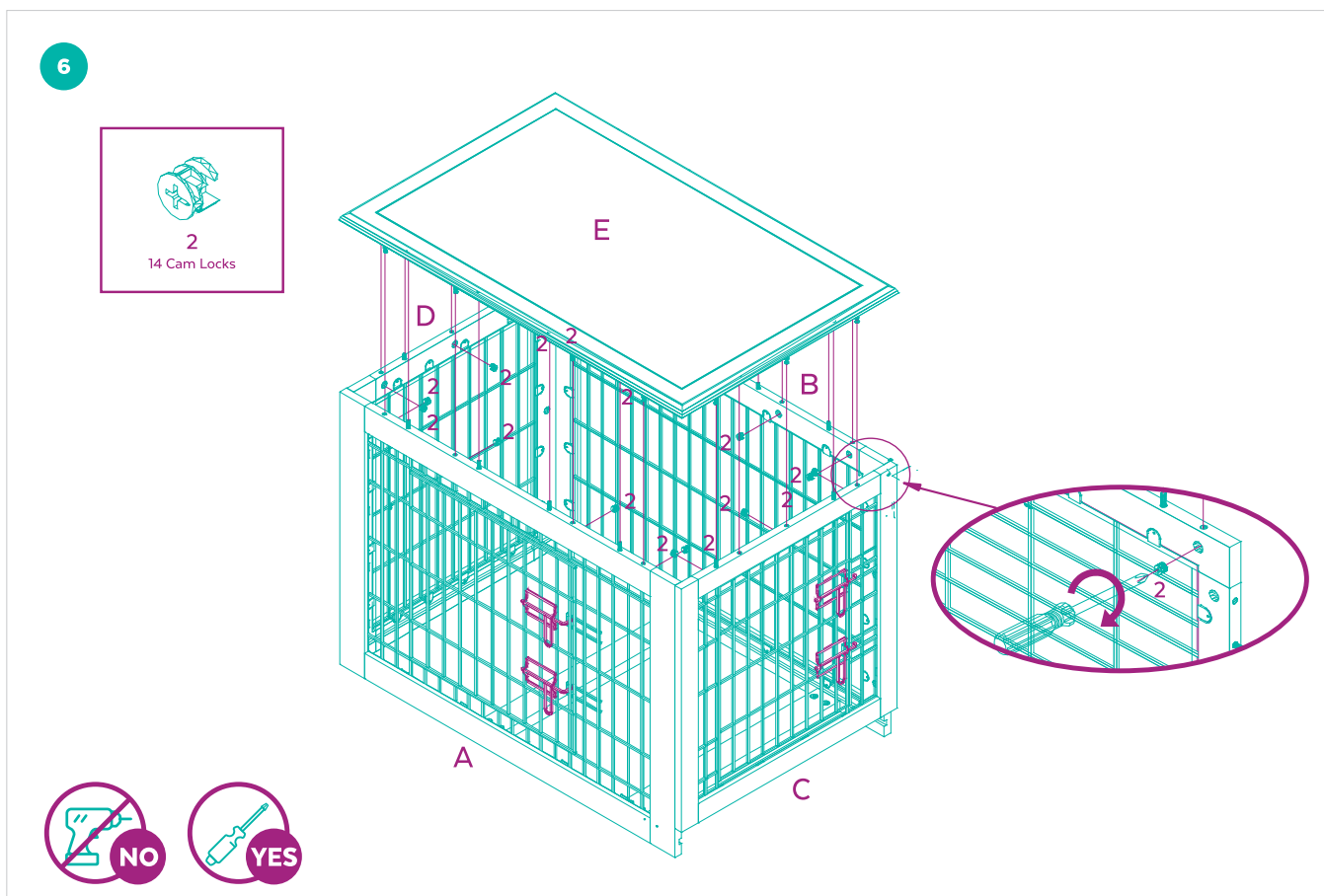
For questions, please call 1-800-672-4399.





**STEP 5** Attach the front door (panel C) to the 2 side panels (panels A and B) by aligning the cam lock bolts and wooden dowels into the corresponding holes. **HINT:** Make sure the door locks are on the outside.

Insert and tighten the cam locks with a Phillips head screwdriver.

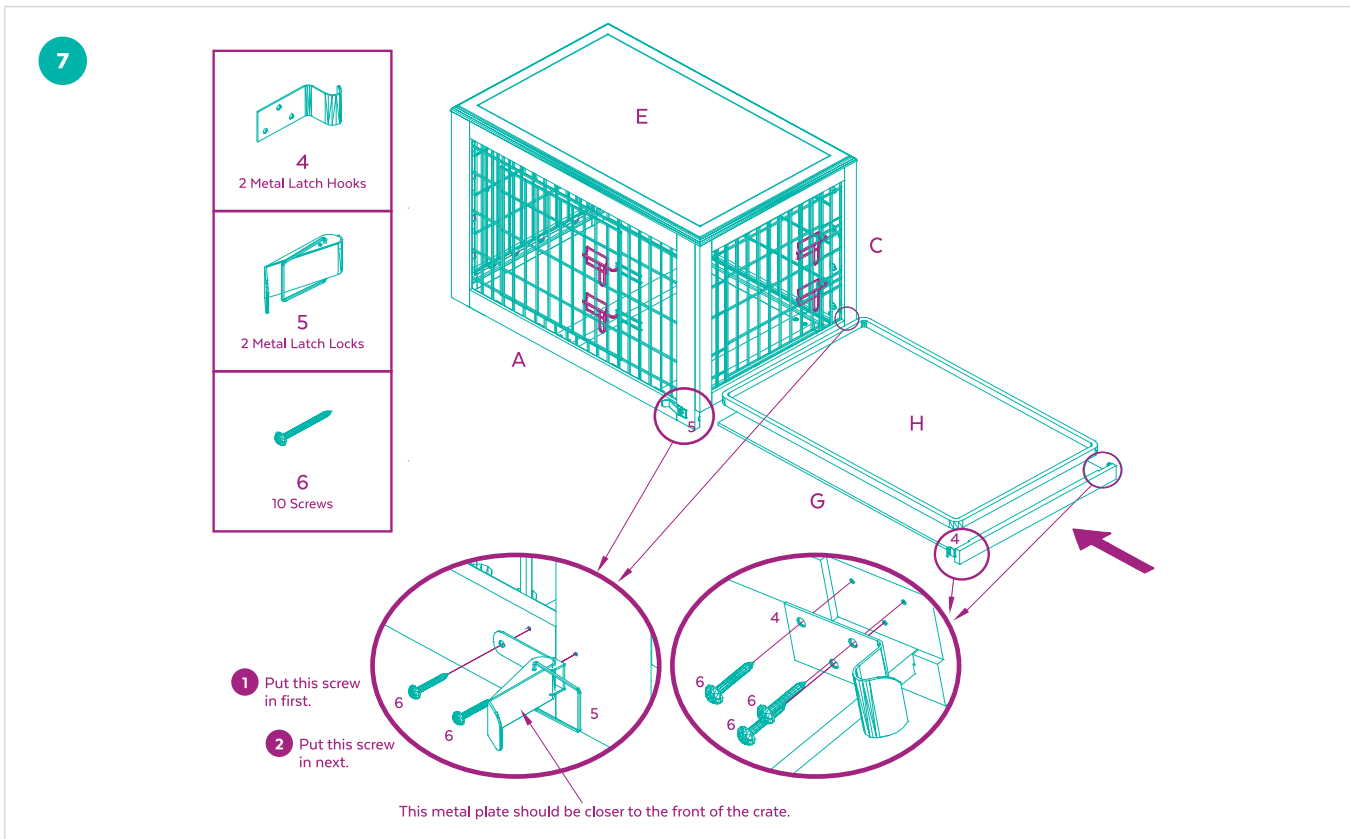


**STEP 6** Turn the crate so the bottom (panel F) is on the ground. Attach the top panel (panel E) by guiding the cam lock bolts and wooden dowels into the corresponding holes on the frame of panels A, B, C and D.

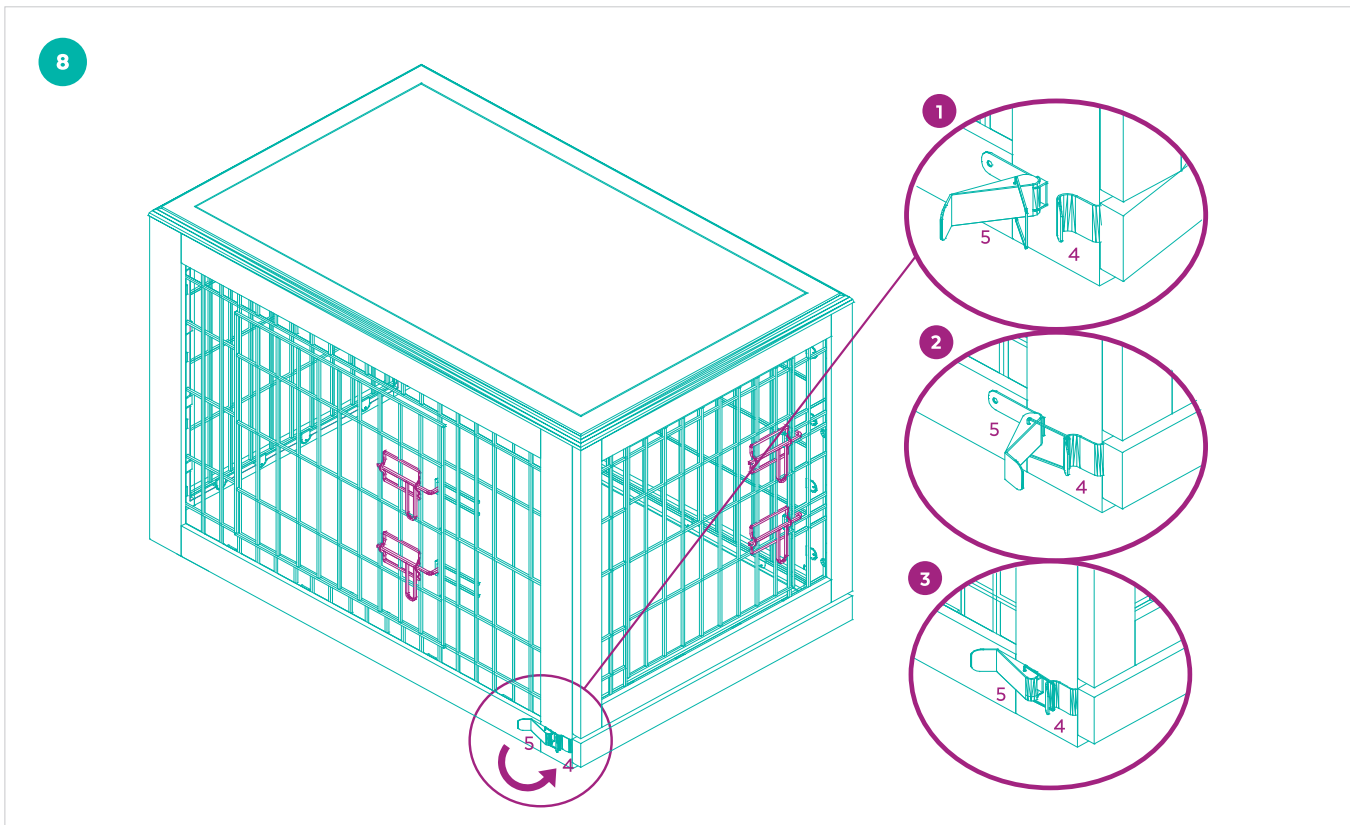
Open the doors, then insert and tighten the cam locks with a Phillips head screwdriver.

For questions, please call 1-800-672-4399.





**STEP 7** Attach the metal latch locks onto the side panels (panel A and B) and the metal latch hook on to the tray (G) in the pre-drilled holes on either side of the crate. **HINT:** Pay close attention to the direction. The metal plate of the latch lock should be closer to the front of the crate. Place the plastic pan (H) on the tray (G) and slide it into the crate along the channel in the bottom and side panels.



**STEP 8** To lock the metal latch follow 3 steps. **STEP 1:** Pull the wire ring to the latch hook. **STEP 2:** Hook the wire ring from the latch lock to the latch hook. **STEP 3:** Press the metal plate on the latch lock backward to lock it. Repeat on the other side of the pan.

For questions, please call 1-800-672-4399.



## CRATE TRAINING TIPS



### INTRODUCTION

Introduce your pet to his new home. Let him explore it first – on his own time. Don’t force him or rush the process. Remember, you want your pet to think of his crate as a positive, safe space of his own, so let his natural curiosity lead. If he seems reluctant, entice him to explore by putting his favorite toy inside.



### TIME

Acclimate him to it slowly. Once your pet is comfortable, get him used to the idea of staying in his crate little by little. At first, keep him inside the crate by sitting or standing in front of the open door while talking soothingly. Do this for a short amount of time, then gradually increase it. Eventually, close the door, leaving it closed for a short duration, increasing it gradually. Praise him and reward him with treats each time. Remember, positive associations!



### DENNING

Appeal to your pet’s instinct as a denning animal. Help him associate his crate with a den (or a castle) of his own by creating the safe space where all his basic needs are met. And make it comfy for him by placing a towel, bed or blanket at the bottom.



### BATHROOM

Take him out for regular potty breaks. Wild animals don’t do their business in their dens. Reinforce this natural instinct in your pet by taking him outside, away from his “castle” to do his business. And do it regularly. Younger animals especially need to be let out more frequently.



### POSITIVE ASSOCIATION

Never put your pet in his crate as punishment. That creates negative associations and will make him reluctant to use it.



### PROFESSIONAL HELP

Always consult your veterinarian or trainer with specific questions for crate training your pet.

## CLEANING INSTRUCTIONS

To provide your pet with the most comfortable “castle” possible, clean his crate routinely with a mild, non-toxic cleaner and water.

## WARNINGS AND CAUTIONS

**We care about the safety of your pet, so please READ AND FOLLOW ALL INSTRUCTIONS before using a new crate. Improper use may result in serious injury or even the death of your pet.**

- To prevent choking and other serious injuries, always remove any collars, tags or leashes from your pet before placing him in his crate.
- Never transport your pet in his crate. Please use a carrier specifically designed for the purposes of pet long-distance transport.
- This crate is not designed to restrain aggressive breeds of dogs who may thrash and launch themselves inside the crate. Consult your veterinarian for recommendations on restraining aggressive pets.
- Before your pet enters his crate, make sure that it’s secure. Double-check that the crate is properly assembled, all screws are tightened, and all locks are secure before leaving your pet inside his crate.
- It’s never a good idea to leave your pet inside his crate for too long. Remember, pets need time to socialize, exercise and go potty! Consult your veterinarian or trainer to determine the appropriate amount of time that your pet can safely and comfortably be left in his crate.
- Make sure that your dog’s paws are large enough that they won’t slip through the bars in the floor panel.
- Always be sure your pet has enough food and water before leaving him in his crate.
- Consult your veterinarian about whether it’s safe to leave food, toys or other items in the crate with your particular pet. They all have unique personalities and habits, so what works for one might not work for another.
- Never place multiple pets into one crate.
- Never use the crate without its plastic tray properly fitted and secured, and be sure not to place your pet into a crate with a damaged tray.
- Please, never allow your children to play in, on, or around the crate.
- We know how excited pets can get, but do be sure to make sure his paws, snout, ears or tail aren’t in the way of the door hinge or latch. Ouch!
- Never place your pet’s crate in direct sunlight or store your crate outside or in a car, because the metal can become very hot. Never leave your pet in a closed car on a hot day. Serious heatstroke or death could result from an overheated pet.
- While we are dedicated to providing the best for your pet, Chewy, Inc. is not responsible for any loss, damage, discomfort, injury, illness, death or costs of any kind as a result of or by use of this crate.

### QUESTIONS?

**CALL OUR FRIENDLY CUSTOMER SERVICE TEAM ANYTIME.  
WE’RE HERE 24/7! 1-800-67-CHEWY (672-4399)**