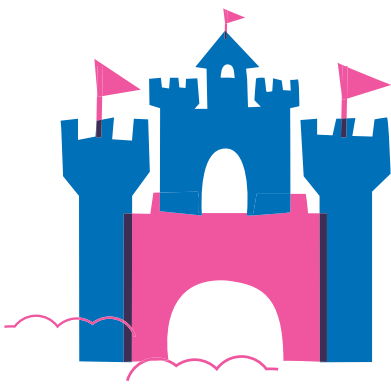
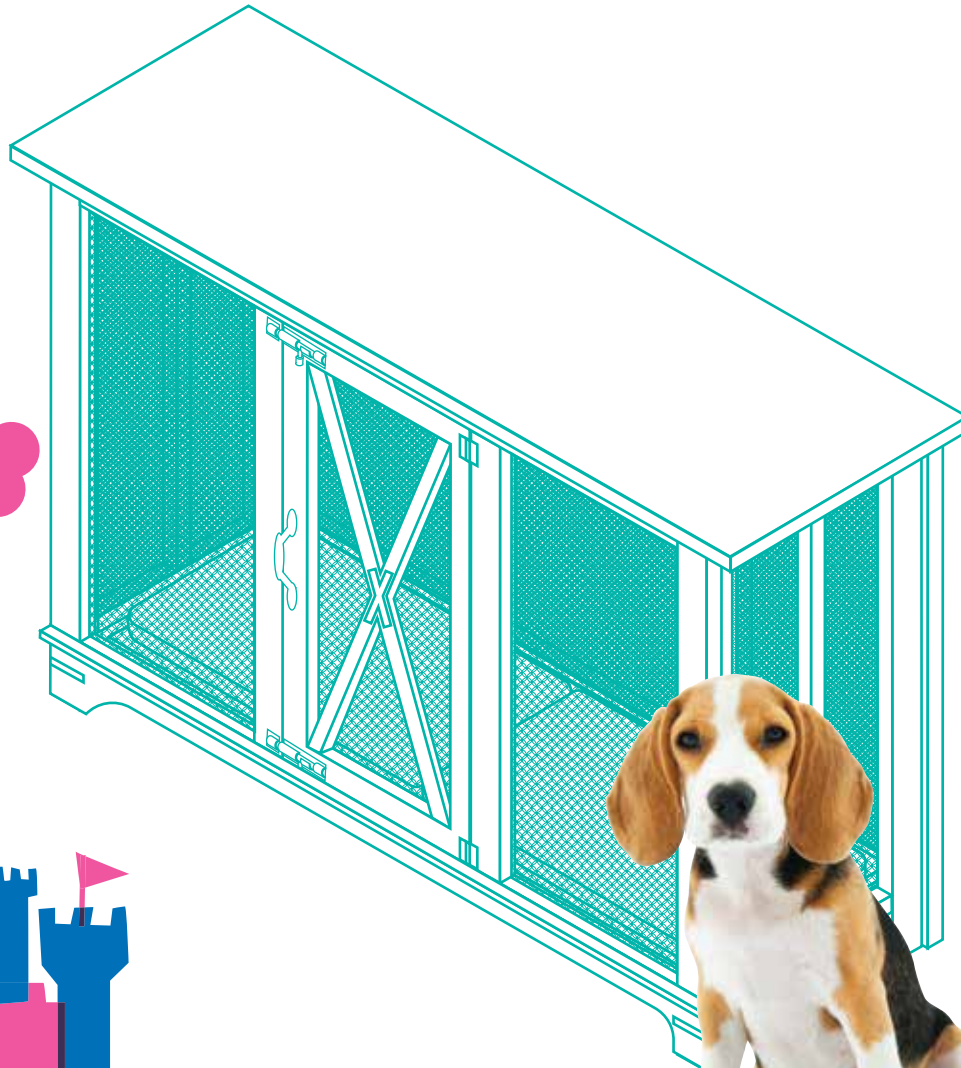
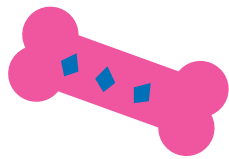
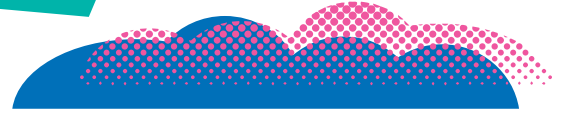


frisco.  
better pet goods



FOR SAFETY, REMOVE LEASH AND COLLAR  
BEFORE YOUR PET ENTERS THE CRATE.

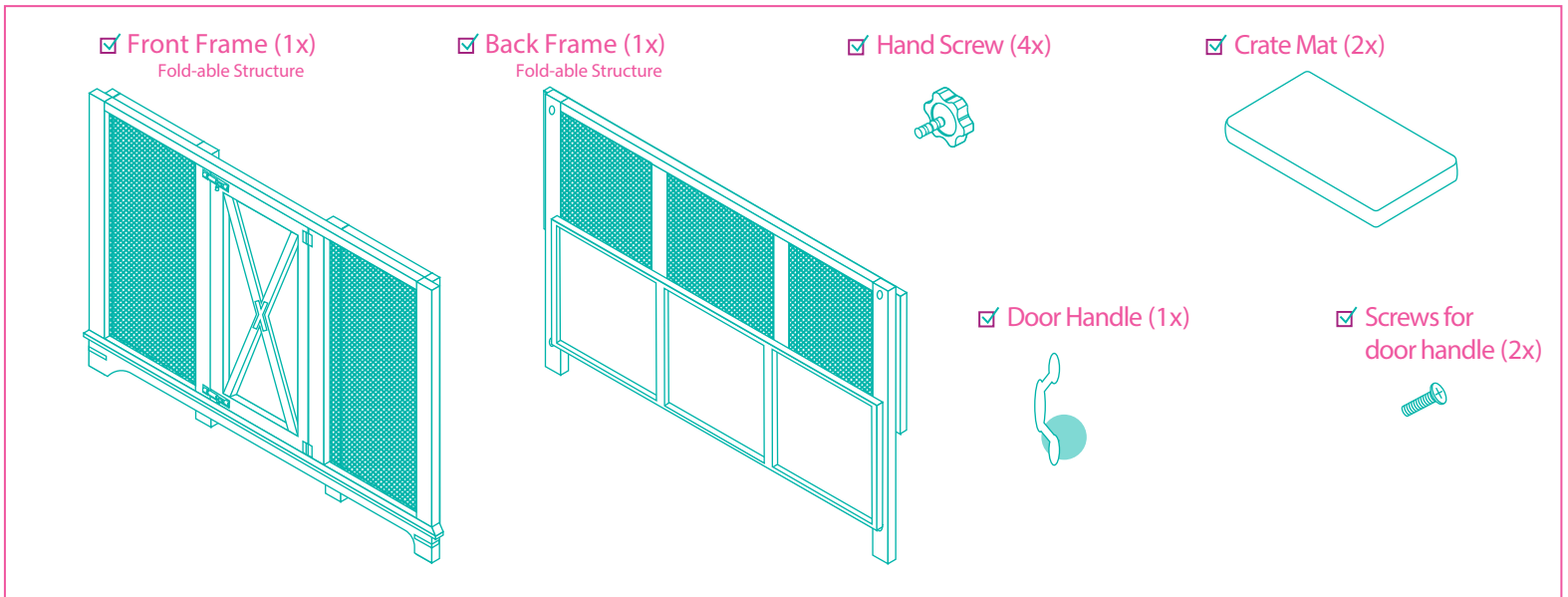
SKU# 255326

# DENVER DOG CRATE

## INSTRUCTION MANUAL

Prior to assembling your pup's new Dog Crate, we recommend following these instructions step by step. Make sure all parts are ready before you start assembly.

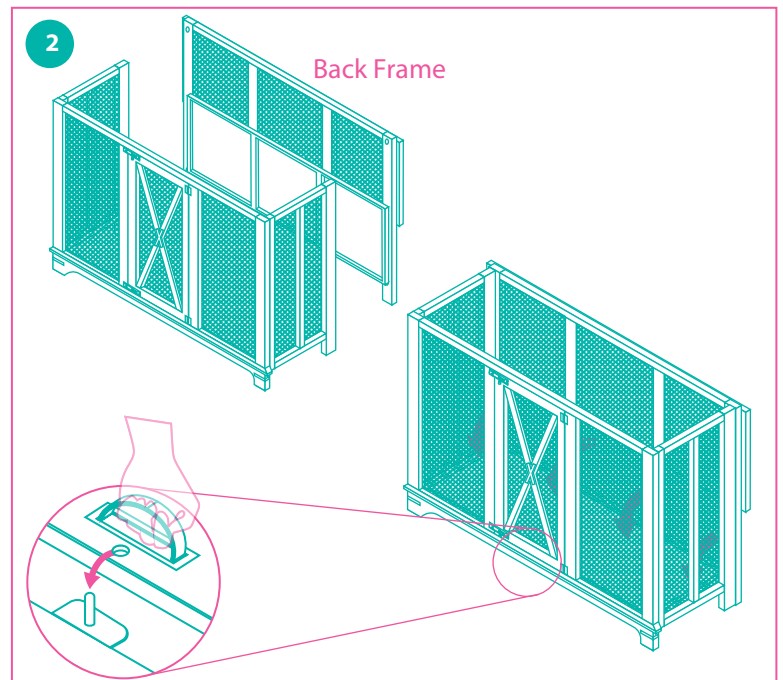
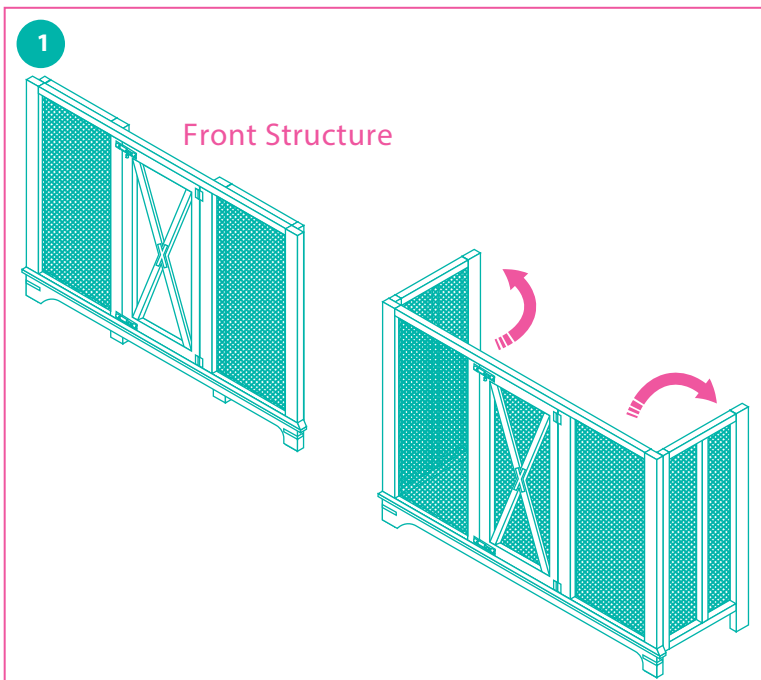
## PARTS INCLUDED



## DOG CRATE ASSEMBLY INSTRUCTIONS

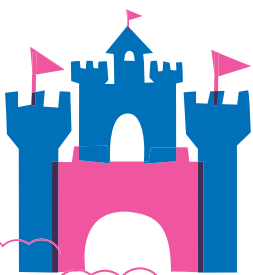
This crate requires two people for assembly.

Identify and locate each of the components listed above. Make sure to have all components ready to assemble.

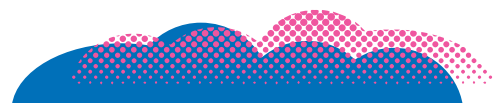


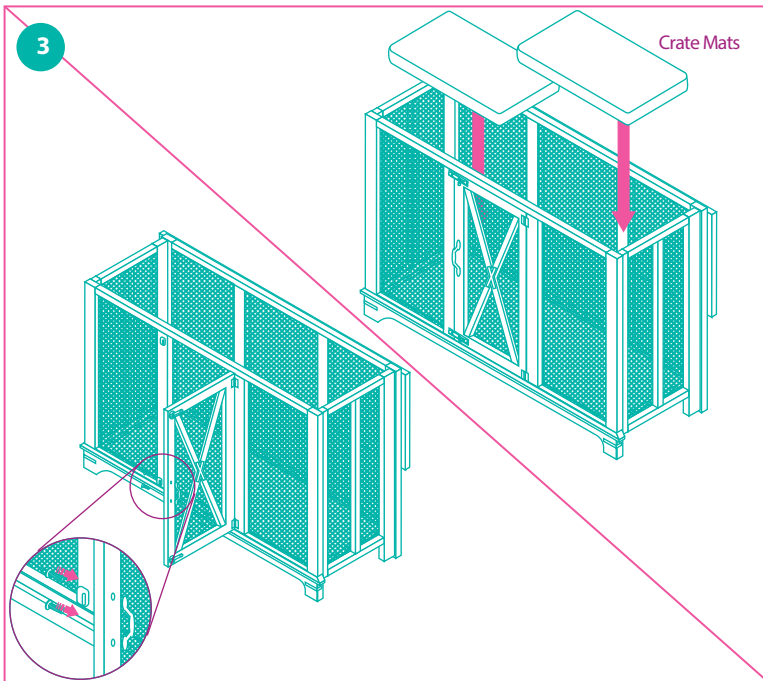
**STEP 1-** Do not place parts directly on hard floor to avoid scratches or damage to your dog crate. With the help of another person, place the front frame in an upright position, then cut zip tie to open side panels.

**STEP 2-** With the help of another person, place the rear frame in an upright position and using the handle, lower the floorboard into the metal plate and lock into the metal rod.

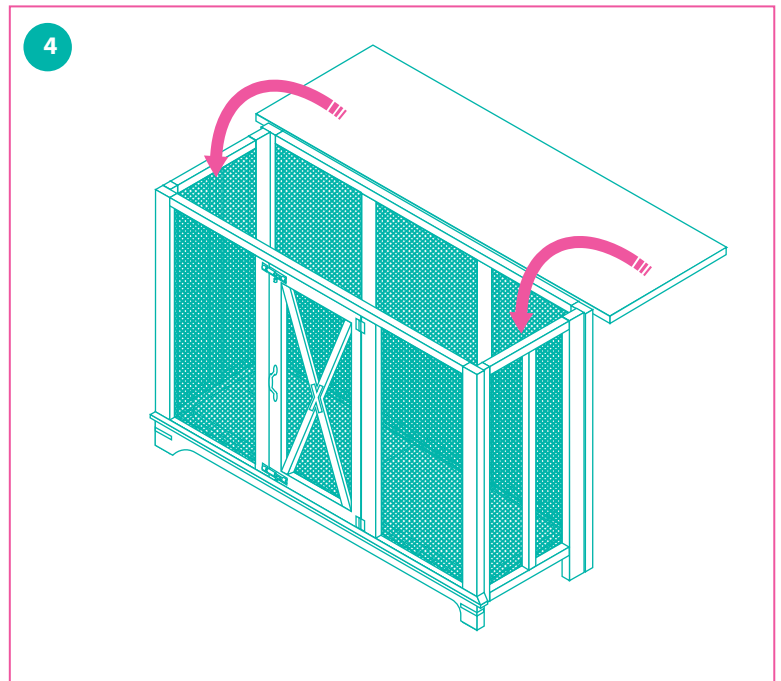


For questions , please call 1-800-672-4399

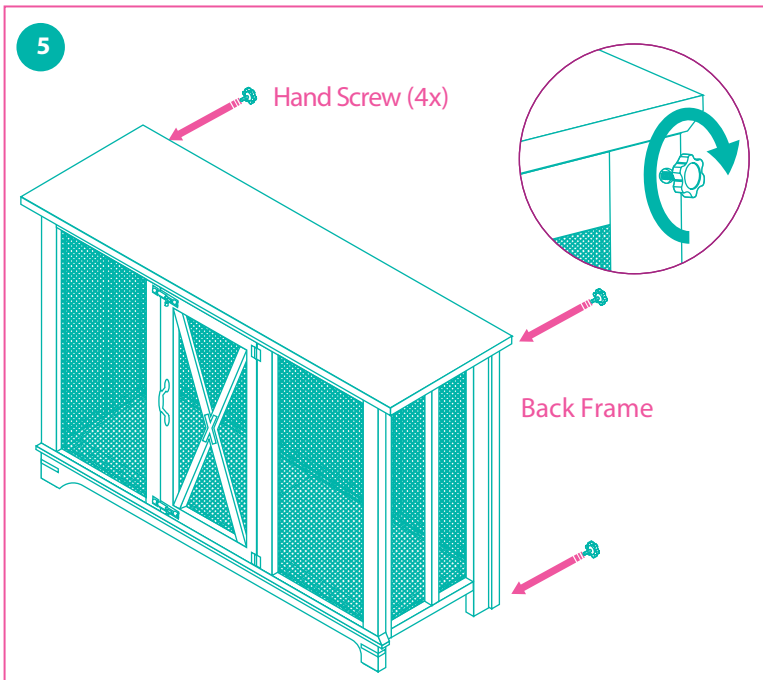




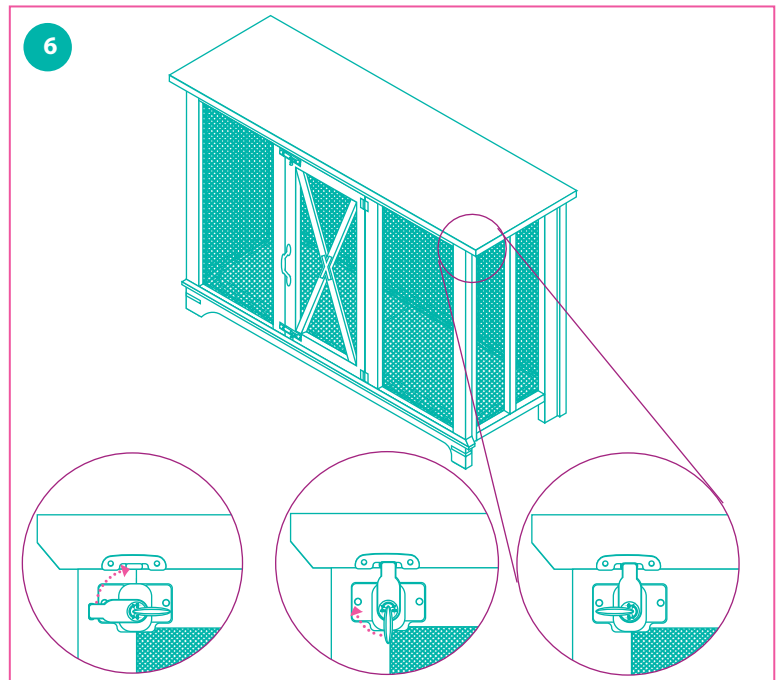
**STEP 3-** Place the two crate mats inside the crate and screw the handle to the door.



**STEP 4-** Gently close top as shown above by flipping it over.



**STEP 5-** Secure the rear structure with the 4 hand screws as shown.

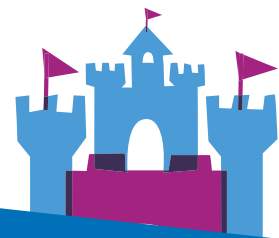


**STEP 6-** To secure the top, lock both sides by turning the locks clockwise, making sure they latch to the metal hooks located above them. Turn once more to lock in place.

## MAINTENANCE

To provide your pet with the most comfortable crate possible, clean routinely with a mild, non-toxic cleaner and water.

## CRATE TRAINING TIPS



### INTRODUCTION

Introduce your pet to his new home. Let him explore it first – on his own time. Don't force him or rush the process. Remember, you want your pet to think of his crate as a positive, safe space of his own, so let his natural curiosity lead. If he seems reluctant, entice him to explore by putting a few treats and his favorite toy inside.



### TIME

Acclimate him to it slowly. Once your pet is comfortable, get him used to the idea of staying in his crate little by little. At first, keep him inside the crate by sitting or standing in front of the open door while talking soothingly. Do this for a short amount of time, then gradually increase it. Eventually, close the door, leaving it closed for a short duration, increasing it gradually. Praise him and reward him with treats each time. Remember, positive associations!



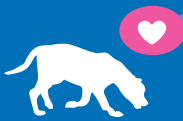
### DENNING

Appeal to your pet's instinct as a denning animal. Help him associate his crate with a den (or a castle) of his own by creating the safe space where all his basic needs are met. And make it comfy for him by placing a towel, bed or blanket at the bottom.



### BATHROOM

Take him out for regular potty breaks. Wild animals don't do their business in their dens. Reinforce this natural instinct in your pet by taking him outside, away from his "castle" to do his business. And do it regularly. Younger animals especially need to be let out more frequently.



### POSITIVE ASSOCIATION

Never put your pet in his crate as punishment. That creates negative associations and will make him reluctant to use it.



### PROFESSIONAL HELP

Always consult your veterinarian or trainer with specific questions for crate training your pet.

## WARNINGS AND CAUTIONS

We care about the safety of your pet, so please **READ AND FOLLOW ALL INSTRUCTIONS** before using a new crate. Improper use may result in serious injury or even the death of your pet.

- To prevent choking and other serious injuries, always remove any collars, tags or leashes from your pet before placing him in his crate.
- Never transport your pet in his crate. Please use a carrier specifically designed for the purposes of pet transport.
- This crate is not designed to restrain aggressive breeds of dogs who may thrash and launch themselves inside the crate. Consult your veterinarian for recommendations on restraining aggressive pets.
- Before your pet enters his crate, make sure that it's secure. Double check that the crate is properly assembled and that all latches and hooks are secure before leaving your pet inside his crate.
- It's never a good idea to leave your pet inside his crate for too long. Remember, pets need time to socialize, exercise and go potty! Consult your veterinarian or trainer to determine the appropriate amount of time that your pet can safely and comfortably be left in his crate.
- Always be sure your pet has enough food and water before leaving him in his crate.
- Consult your veterinarian about whether it's safe to leave food, toys or other items in the crate with your particular pet. They all have unique personalities and habits, so what works for one might not work for another.
- Never place multiple pets into one crate.
- Never use the crate without its plastic pan properly fitted and secured, and be sure not to place your pet into a crate with a damaged pan.
- Please, never allow your children to play in, on, or around the crate. For pet use only.
- We know how excited pets can get, but do be sure to make sure his paws, snout, ears or tail aren't in the way of the door hinge or latch. Ouch!
- Never place your pet's crate in direct sunlight or leave your pet in a closed car on a hot day. Serious heat stroke, death or other injury could result from an overheated pet.
- Do not store your crate outside or in a car. Extreme heat may cause the crate pan to warp.
- While we are dedicated to providing the best for your pet, Chewy, Inc. is not responsible for any loss, damage, discomfort, injury, illness, death or costs of any kind as a result of or by use of this crate.

### QUESTIONS?

CALL OUR FRIENDLY CUSTOMER SERVICE TEAM ANYTIME.  
WE'RE HERE 24/7! 1-800-67-CHEWY (672-4399)

For questions , please call 1-800-672-4399