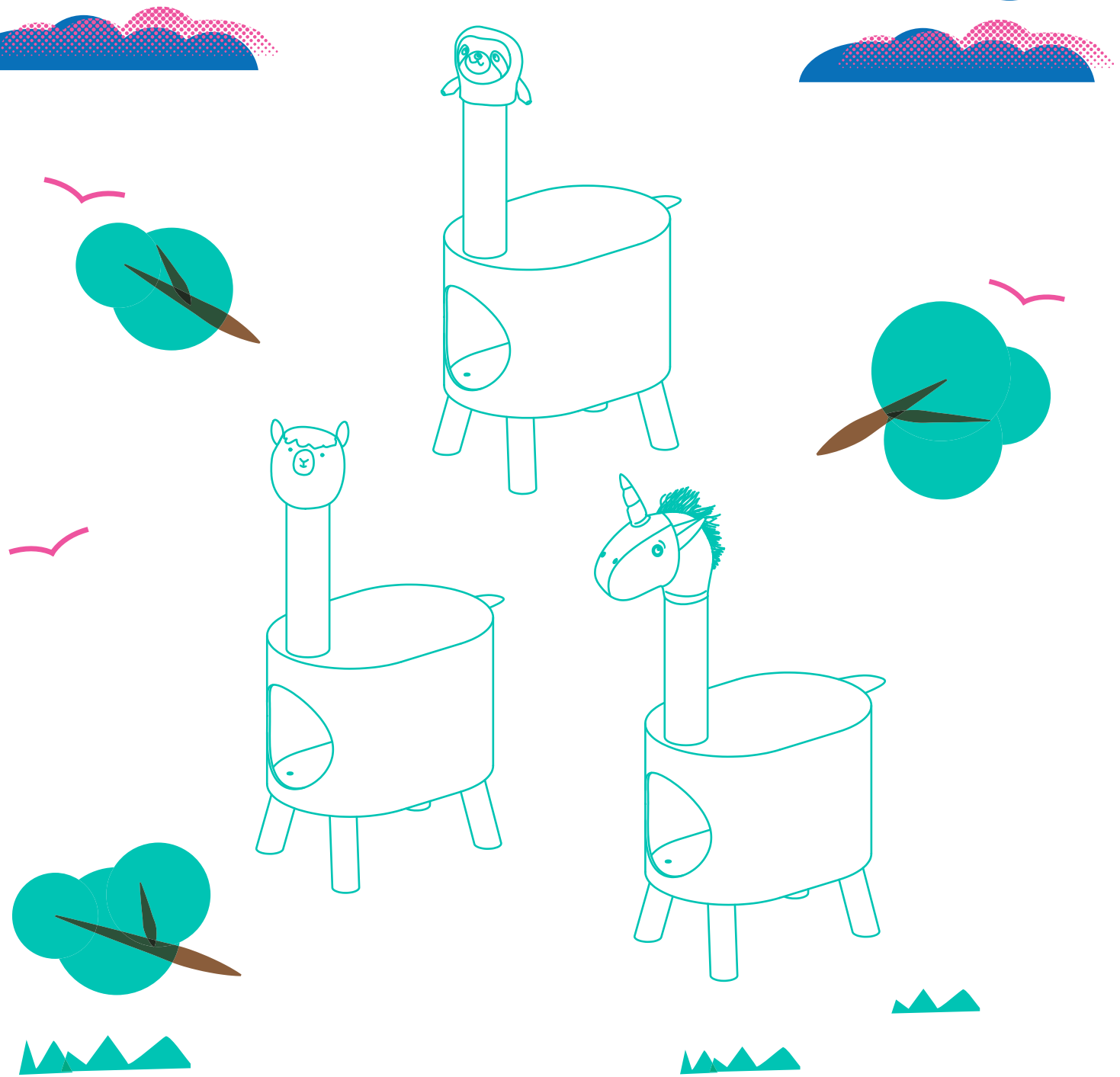


216x280mm

frisco.  
better pet goods

35.8 IN  
HEIGHT



SKU# 289339, 289340, 289341

OVERALL DIMENSIONS

17.71 in L x 12.2 in W x 35.8 in H  
45 cm L x 31 cm W x 91 cm H

OVERALL DIMENSIONS

17.71 in L x 12.2 in W  
45 cm L x 31 cm W

# CAT TREE

## INSTRUCTION MANUAL

WARNINGS & CAUTIONS

PLEASE READ AND FOLLOW ALL WARNINGS AND INSTRUCTIONS TO AVOID PET INJURY OR PROPERTY DAMAGES.

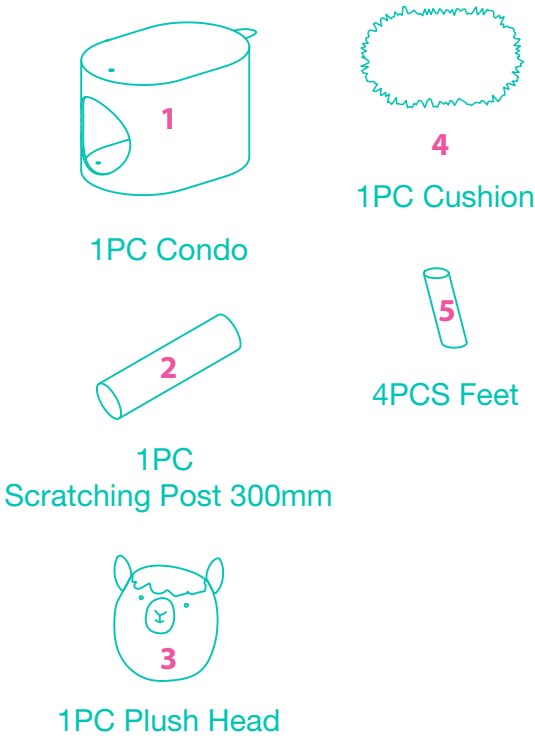
- Keep all tools and instructions in a safe place for future reference.
- Follow the instructions carefully and make sure you've completed each step.
- This cat tree is intended for cat use only, please keep children away.
- Keep all small parts away from children / pets to avoid choking hazards.
- Never climb, rock, shake, step or hang on the cat tree.
- Place your cat tree indoors, away from direct sunlight or damp areas.
- Cat Trees should be placed on a flat, level surface for stability.
- Check your cat tree often for loose screws or parts that might need re-tightening.
- If your cat tree gets torn or damaged, please discard it.
- The product photo may vary slightly from your fully assembled cat tree as this product is continually being enhanced.

CLEANING INSTRUCTIONS

Spot clean stains and vacuum fur (using small handheld or attachment) when necessary.  
For removable cushion machine wash cold with like colors, gentle cycle. Do not bleach. Hang dry.

COMPONENTS

Prior to assembly, be sure to identify and sort all components shown below.

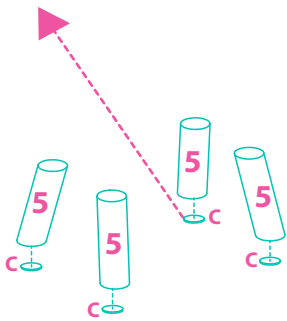


A		M10 x 62mm	1PC
B		M8 x 35mm	4PCS
C		Non-skid Pad	4PCS
D		M10 x 40mm	1PC
		5mm Wrench	1PC

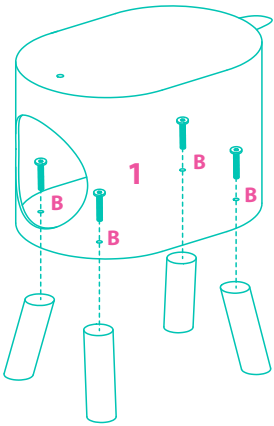
ASSEMBLY INSTRUCTIONS

STEP 1

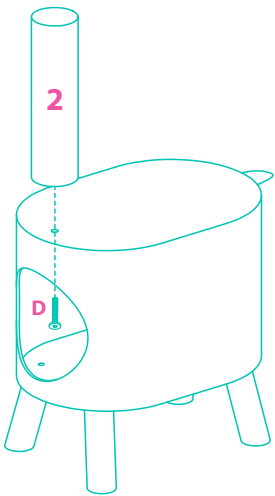
For non-skid pads attachment, peel the paper backing on the pad and press down firmly to adhere, repeat for other 3 pads.



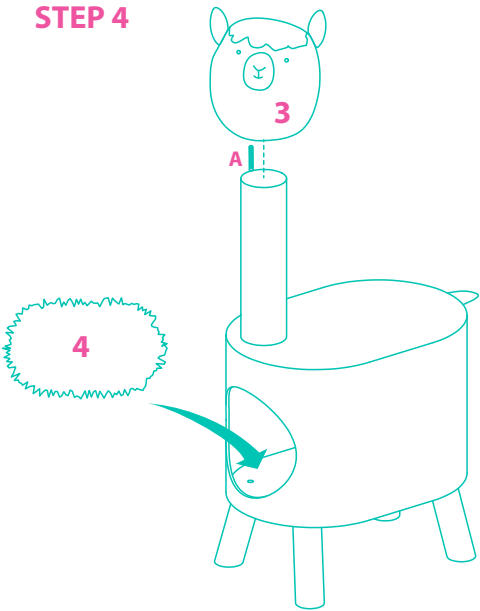
STEP 2



STEP 3



STEP 4



Questions? Call our customer service 1-800-672-4399