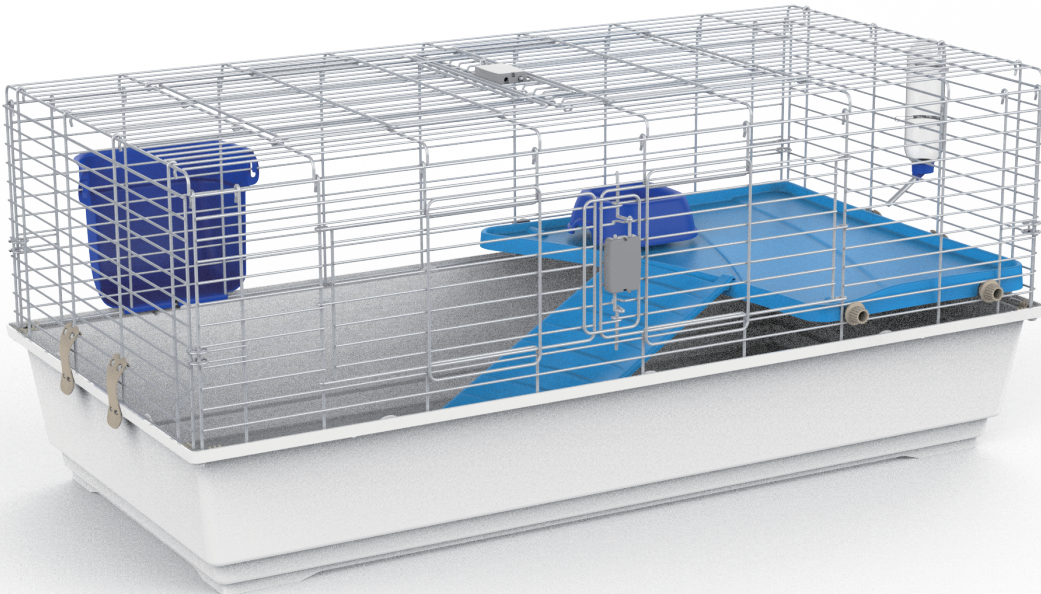
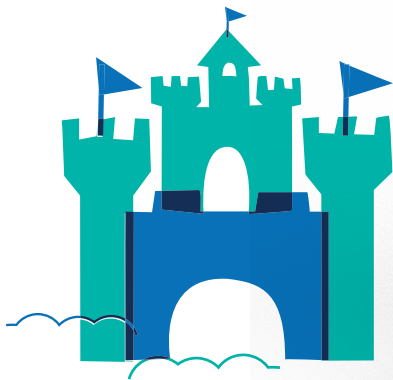
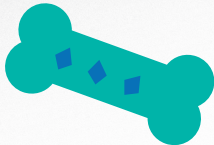


WARNINGS AND CAUTIONS

- For small pet use only. NOT FOR USE BY CHILDREN.
- Be sure to choose the correct sizing for your pet based on wire spacing, size and pet type.
- Inspect the product periodically and do not use if it becomes worn or damaged.
- Remove pet’s collar or any pet accessory before putting pet in the Habitat.
- Since many small pets can jump extremely high and/or scale wire bars, always supervise your pet. Even if you think your small pet is incapable of escaping, it is a good idea to place the habitat in a room in the house that has been pet-proofed. Pet-proofing a home includes taking measures to ensure your small pet cannot chew or ingest electrical cords, toxic plants, carpets, furniture, or that he cannot squeeze into gaps behind furniture or appliances.
- We do not recommend to use it for large animals such as dogs, cats, etc.
- Do not use as a barrier to stairs, heat sources, etc.
- Wipe clean with a damp soft cloth and mild soap. Dry thoroughly. Do not use abrasive cleaners as it may damage the product.
- Assemble according to the directions and do not leave your pet in the pen for an extended period of time without supervision.
- Gradually transition your pet to accept the habitat.



FOR SAFETY, REMOVE LEASH AND COLLAR
BEFORE YOUR PET ENTERS THE CRATE.



QUESTIONS?
CALL OUR FRIENDLY CUSTOMER SERVICE TEAM ANYTIME.
WE’RE HERE 24/7! 1-800-67-CHEWY (672-4399)

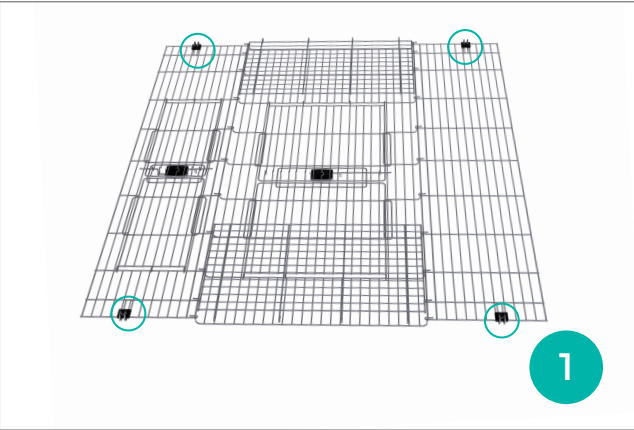
SMALL ANIMAL HABITAT
INSTRUCTION MANUAL

PARTS INCLUDED

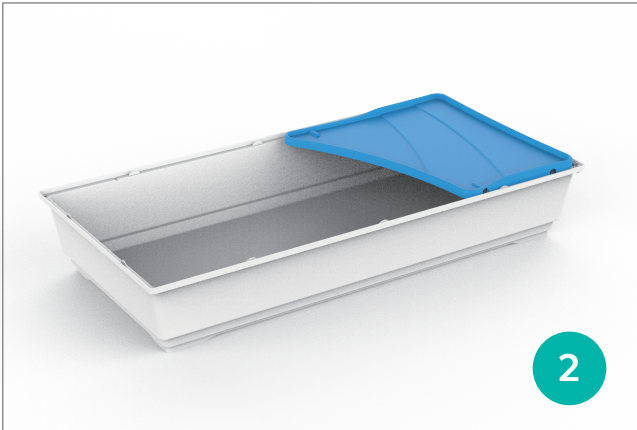
- ✓ Plastic base x1
- ✓ Wire mesh x1
- ✓ Water bottle x1
- ✓ Food dish x1
- ✓ Hay feeder x1
- ✓ Ramp x1
- ✓ Corner clips x4
- ✓ Side clips x4
- ✓ Screws x4
- ✓ Platform x1

CRATE ASSEMBLY INSTRUCTIONS

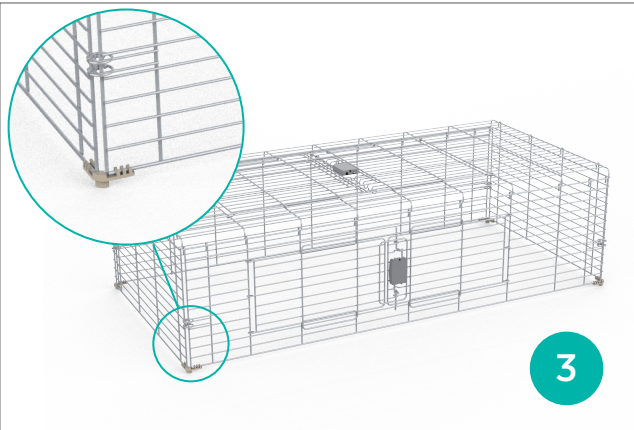
Assembly instructions for small animals habitat 292193/292194.



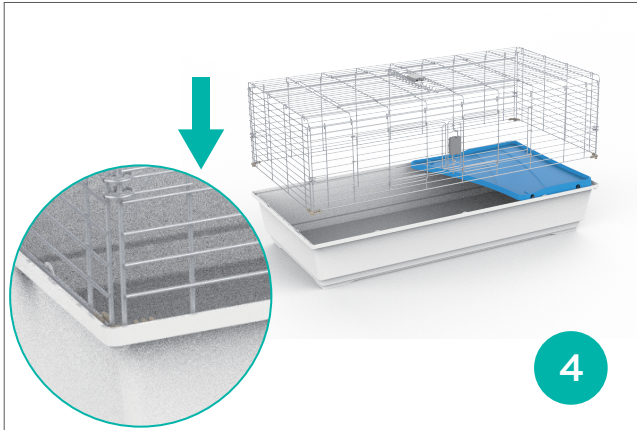
STEP 1 Unfold the wire mesh and remove the protective plastic gasket.



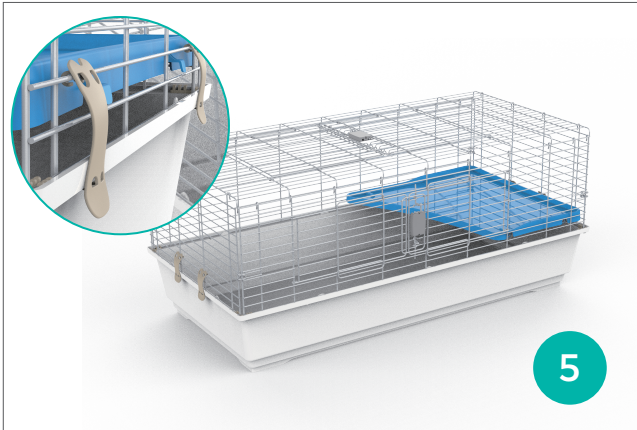
STEP 2 Place the platform in the plastic base and wait for installation.



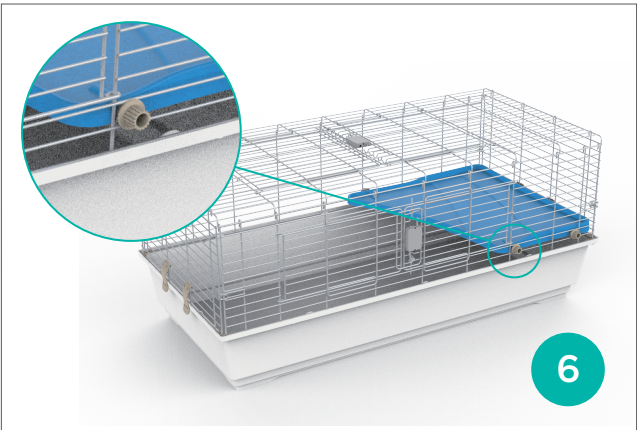
STEP 3 Unfold the front, back and side panels of the wire mesh. Assemble the panels using the corner clips and install the corner clips on the bottom of each panel.



STEP 4 Place the assembled wire top onto of the base.



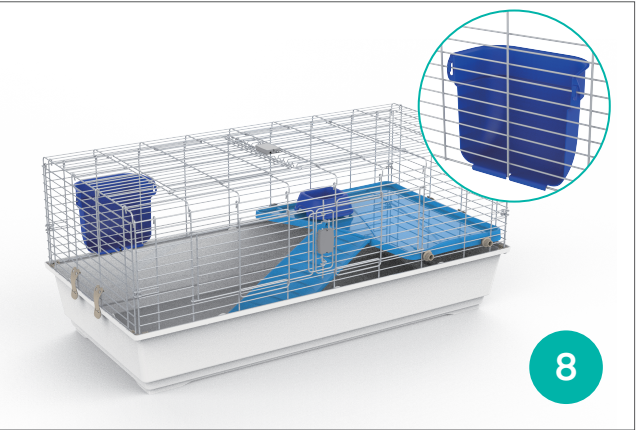
STEP 5 Secure the four side clips by attaching the top to the third wire from the bottom and then attach the bottom piece of the clip to the plastic base.
Hint: The top part of the clip has a small opening which goes around the middle part of the vertical wire as seen in the image. Please secure the four side clips in the direction shown in figure.



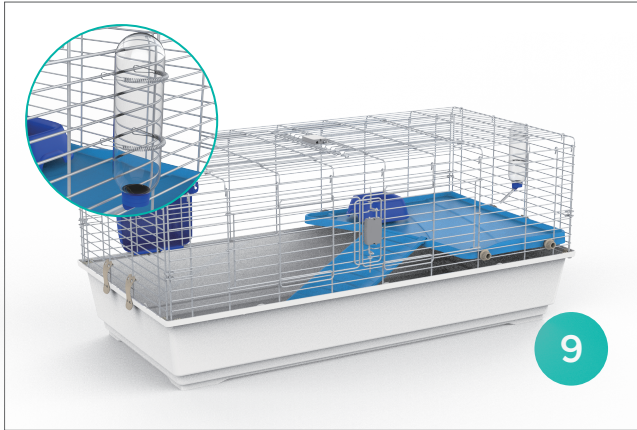
STEP 6 Put the platform at the height which is in between the second and third wire from the bottom. Use the screws to fix the platform to the wire cage.



STEP 7 Open the top lock of the habitat and place the ramp on the platform.
Hint: The ramp will clip into the platform which means it is secured and the flat part of the ramp will touch the bottom for a smooth connection.



STEP 8 Attach the hay feeder to the cage at an appropriate height by sliding it onto the outside of the habitat. Place the food dish either on the platform or the base of the habitat.



STEP 9 Using the two springs, attach the water bottle at an appropriate height. The actual water bottle will be on the outside of the habitat while the tub will stick into the habitat.
Hint: Fill bottle completely for best results and minimal dripping. Set up the water bottle one spring at a time to ensure it is connected to the habitat. To create an opening in the spring to attach the water bottle, press down to open.

