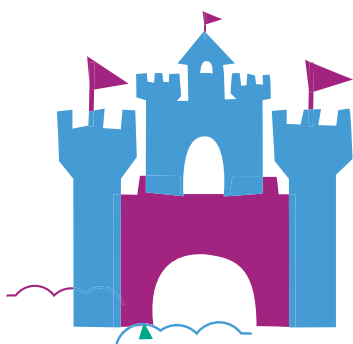
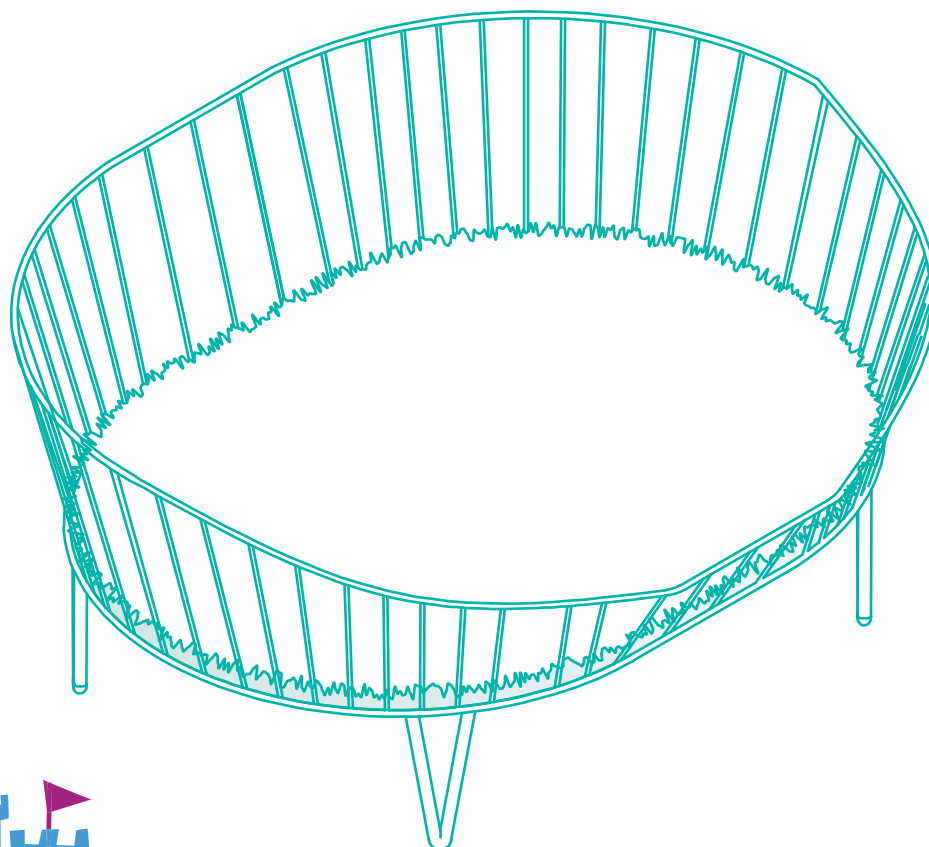
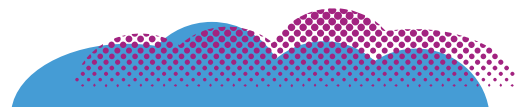
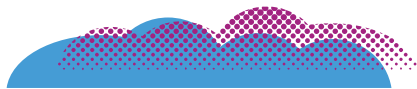


frisco.[®]
better pet goods



SKU# 296678, 296679, 296680

OVERALL DIMENSIONS

S: 25.98 in L x 19.68 in W x 11.61 in H
66 cm L x 50 cm W x 29.5 cm H
M: 29.13 in L x 23.6 in W x 11.61 in H
74 cm L x 60 cm W x 29.5 cm H
L: 31.88 in L x 26.37 in W x 11.61 in H
81 cm L x 67 cm W x 29.5 cm H

WICKER RECTANGULAR BED

WARNINGS & CAUTIONS

PLEASE READ AND FOLLOW ALL WARNINGS AND INSTRUCTIONS TO AVOID PET INJURY OR PROPERTY DAMAGES.

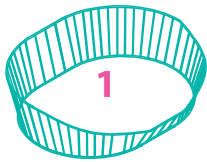
- Keep all tools and instructions in a safe place for future reference.
- Follow the instructions carefully and make sure you've completed each step.
- This pet bed is intended for pets use only, please keep children away.
- Keep all small parts away from children / pets to avoid choking hazards.
- Never climb, rock, shake, step or hang on the pet bed.
- Place your pet bed indoors, away from direct sunlight or damp areas.
- Pet beds should be placed on a flat, level surface for stability.
- Check your pet bed often for loose screws or parts that might need re-tightening.
- If your pet bed gets torn or damaged, please discard it.
- The product photo may vary slightly from your fully assembled pet bed as this product is continually being enhanced.

CLEANING INSTRUCTIONS

Spot clean with a damp cloth.

COMPONENTS

Prior to assembly, be sure to identify and sort all components shown below.



1PC Wicker Bed



1PC Base Board



4PCS Metal Feet



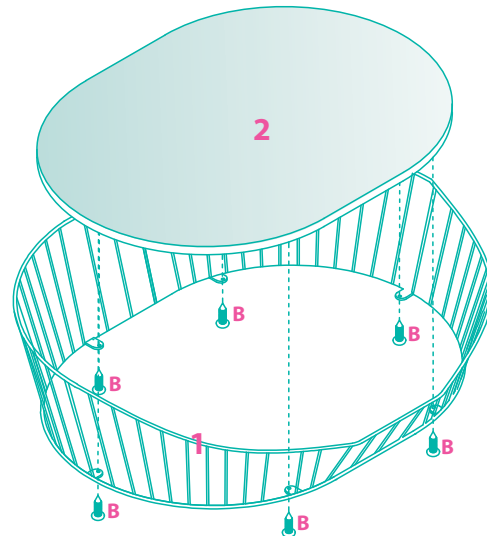
1PC Cushion

A  4x16mm 16PCS+2PCS

B  4x12mm 6PCS+2PCS

ASSEMBLY INSTRUCTIONS

STEP 1



STEP 2

