



PLAY PEN TRAINING TIPS



FIRST IMPRESSIONS

Let your pet become familiar with their new playpen first. It should feel like a safe, secure place, so let them smell and explore the pen before using it.



A HOME WITHIN A HOME

Bring in some familiar toys to the playpen to help your pet think of it as their new hangout spot. Treats and lots of praise help, too.



SLOW WINS THE RACE

Some pets need more time to get used to their new playpen. You may have to let your pet get inside while keeping the door open for a while, and then gradually extend the time until they can stay inside comfortably with the door closed.



POTTY ETIQUETTE

Make sure your pet has a go-to place to do their business inside the pen, so they can really feel like they have a home within your home.



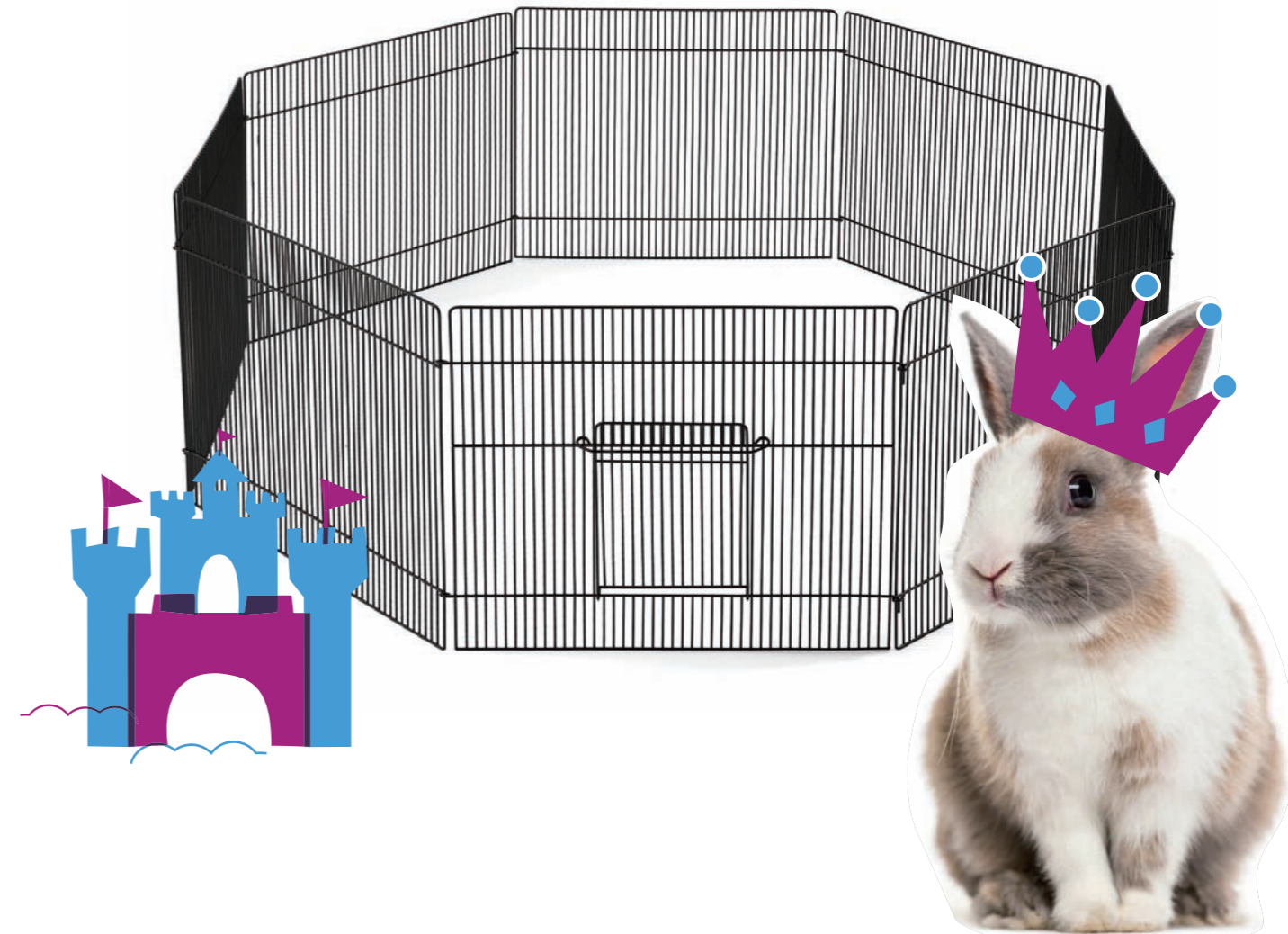
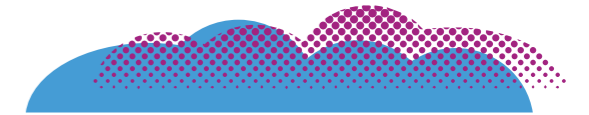
PROFESSIONAL HELP

Always consult your veterinarian or trainer with specific questions or concerns.

WARNINGS AND CAUTIONS

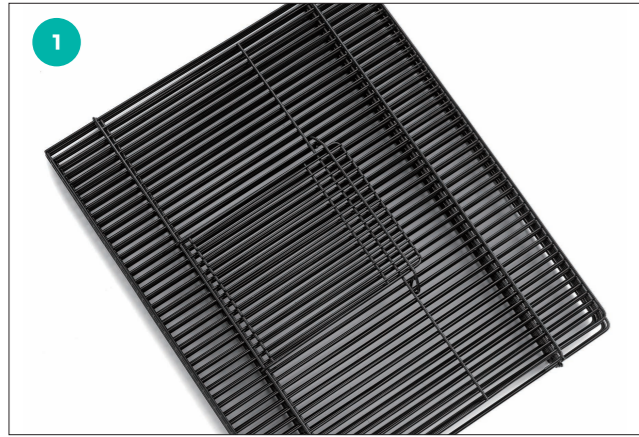
We care about the safety of your pet, so please **READ AND FOLLOW ALL INSTRUCTIONS** before using a new playpen. Improper use may result in serious injury or even the death of your pet.

- For small pet use only. NOT FOR USE BY CHILDREN.
- Be sure to choose the correct sizing for your pet based on wire spacing, size and pet type.
- Give the playpen a look over periodically and do not use if you see any excessive wear or damage.
- Remove your pet's collar or any pet accessory before letting them in the playpen.
- Since many small pets can jump high and/or scale wire bars, always supervise your pet when they're in the playpen. Even if your pet isn't known to be an escape artist, it's a good idea to place the pen in a room in the house that has been pet-proofed.
- Pet-proofing a home includes taking measures to ensure your small pet cannot chew or ingest electrical cords, toxic plants, carpets, furniture, and that they can't squeeze into gaps behind furniture or appliances.
- Not recommended for large animals such as dogs, cats, and other larger pets.
- Do not use as a barrier or gate.
- Never place your pet's playpen in direct sunlight or store the pen outside or in a car, because the metal can become very hot.
- Assemble according to the directions and do not leave your pet in the pen for an extended period without supervision.
- While we are dedicated to providing the best for your pet, Chewy, Inc. is not responsible for any loss, damage, discomfort, injury, illness, death or costs of any kind as a result of or by use of this playpen.

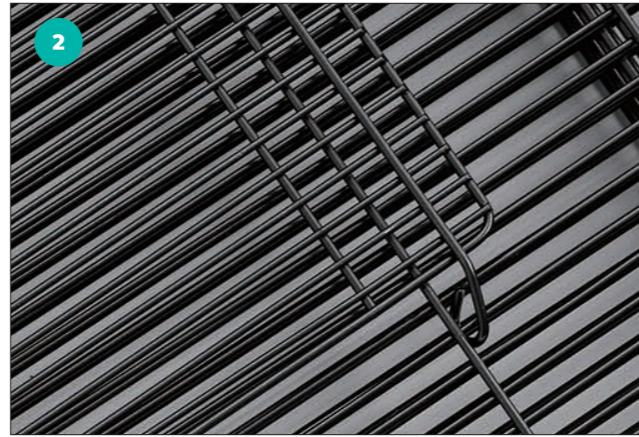


SMALL PET PLAYPEN INSTRUCTION MANUAL

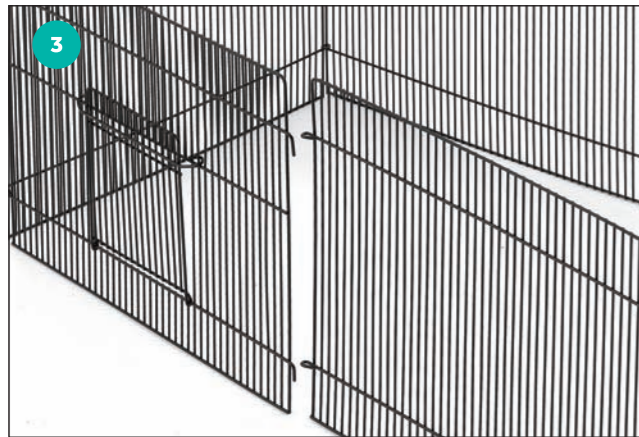
ASSEMBLY INSTRUCTIONS



STEP 1 Remove the **playpen** from the box.



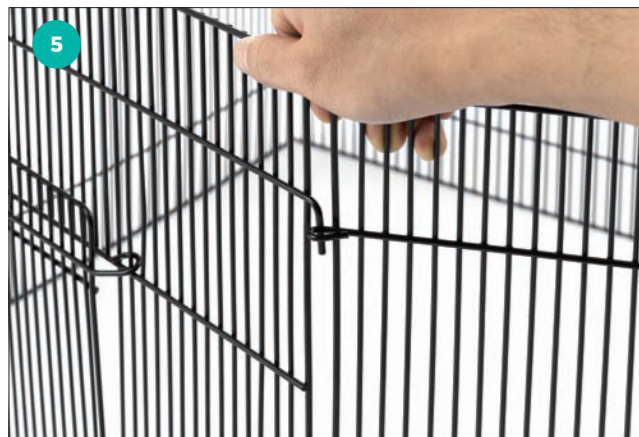
STEP 2 Unhook the **wire latch** binding the playpen panels.



STEP 3 Expand the playpen panels. **TIP:** Locate the panel with the door and make sure the door is on the **bottom** with the **locking wire** facing outwards.



STEP 4 There are **3 wire pins** and **3 corresponding wire loops** located on the two **end panels**. Pull the two end panels together to create the pen, and align the pins with the loops. **TIP:** The pins should be facing downward.



STEP 5 Starting with the **top pin**, attach the panels by inserting the **pin into the loop**.



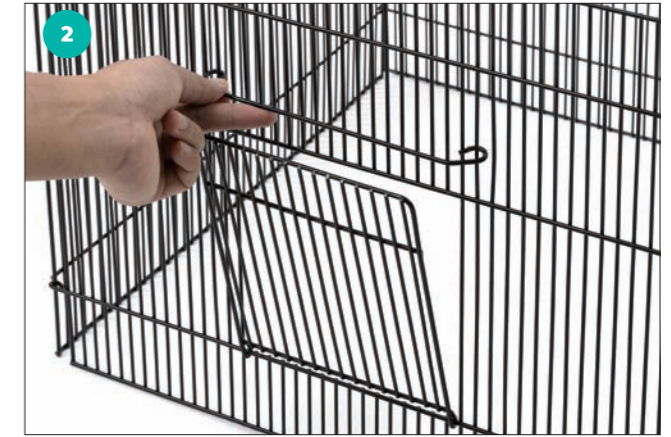
STEP 6 Slide the pin in the **center** of the panel through its corresponding loop on the adjacent panel. Repeat with the pin at the **bottom**.

For questions, please call 1-800-672-4399.

HOW TO USE THE DOOR



STEP 1 Locate the **locking wire** at the top of the door. Slide the wire up above the height of the door. Open the door.



STEP 2 Close the door by moving it back to its original position and sliding the **locking wire** back down over the door.

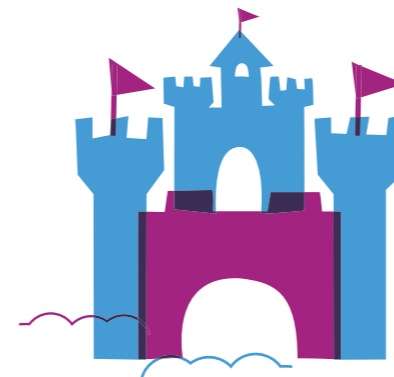
This product is available in the following sizes and colors:

15-in Frisco Wire Small Playpen with Door: White, Item #297212 OR Black, Item #297213

29-in Frisco Wire Small Playpen with Door, White, Item #297215 OR Black, Item #297216

MAINTENANCE

To keep your pet's new hangout spot clean and tidy, use a mild, non-toxic cleaner and water.



QUESTIONS?

CALL OUR FRIENDLY CUSTOMER SERVICE TEAM ANYTIME.
WE'RE HERE 24/7! 1-800-67-CHEWY (672-4399)

For questions, please call 1-800-672-4399.