

CRATE TRAINING TIPS



INTRODUCTION

Introduce your pet to their new home. Let your pet explore it first – on their own time. Don't force your pet or rush the process. Remember, you want your pet to think of their crate as a positive, safe space of their own, so let their natural curiosity lead. If your pet seems reluctant, entice your pet to explore by putting your pet's favorite toy inside.



TIME

Acclimate your pet to it slowly. Once your pet is comfortable, get your pet used to the idea of staying in their crate little by little. At first, keep your pet inside the crate by sitting or standing in front of the open door while talking soothingly. Do this for a short amount of time, then gradually increase it. Eventually, close the door, leaving it closed for a short duration, increasing it gradually. Praise your pet and reward them with treats each time. Remember, positive associations!



DENNING

Appeal to your pet's instinct as a denning animal. Help your pet associate their crate with a den (or a castle) of their own by creating the safe space where all their basic needs are met. And make it comfy for your pet by placing a towel, bed or blanket at the bottom.



BATHROOM

Take your pet out for regular potty breaks. Wild animals don't do their business in their dens. Reinforce this natural instinct in your pet by taking your pet outside, away from their "castle" to do their business. And do it regularly. Younger animals especially need to be let out more frequently.



POSITIVE ASSOCIATION

Never put your pet in their crate as punishment. That creates negative associations and will make your pet reluctant to use it.



PROFESSIONAL HELP

Always consult your veterinarian or trainer with specific questions for crate training your pet.

WARNINGS AND CAUTIONS

We care about the safety of your pet, so please **READ AND FOLLOW ALL INSTRUCTIONS** before using a new crate. Improper use may result in serious injury or even the death of your pet.

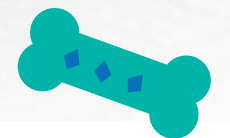
- To prevent choking and other serious injuries, always remove any collars, tags or leashes from your pet before placing your pet in their crate.
- This crate is not designed to restrain aggressive breeds of dogs who may thrash and launch themselves inside the crate. Consult your veterinarian for recommendations on restraining aggressive pets.
- Before your pet enters their crate, make sure that it's secure. Double-check that the crate is properly assembled, all screws are tightened, and all locks are secure before leaving your pet inside their crate.
- It's never a good idea to leave your pet inside their crate for too long. Remember, pets need time to socialize, exercise and go potty! Consult your veterinarian or trainer to determine the appropriate amount of time that your pet can safely and comfortably be left in their crate.
- Make sure that your dog's paws are large enough that they won't slip through the bars in the floor panel.
- Always be sure your pet has enough food and water before leaving your pet in their crate.
- Consult your veterinarian about whether it's safe to leave food, toys or other items in the crate with your particular pet. They all have unique personalities and habits, so what works for one might not work for another.
- Never place multiple pets into one crate.
- Never use the crate without its tray properly fitted and secured, and be sure not to place your pet into a crate with a damaged tray.
- Please, never allow your children to play in, on, or around the crate.
- We know how excited pets can get, but do be sure to make sure their paws, snout, ears or tail aren't in the way of the door hinge or latch. Ouch!
- Never place your pet's crate in direct sunlight or store your crate outside or in a car, because the metal can become very hot. Never leave your pet in a closed car on a hot day. Serious heatstroke or death could result from an overheated pet.
- While we are dedicated to providing the best for your pet, Chewy, Inc. is not responsible for any loss, damage, discomfort, injury, illness, death or costs of any kind as a result of or by use of this crate.

QUESTIONS?

CALL OUR FRIENDLY CUSTOMER SERVICE TEAM ANYTIME.
WE'RE HERE 24/7! 1-800-67-CHEWY (672-4399)



FOR SAFETY, REMOVE LEASH AND COLLAR
BEFORE YOUR PET ENTERS THE CRATE.



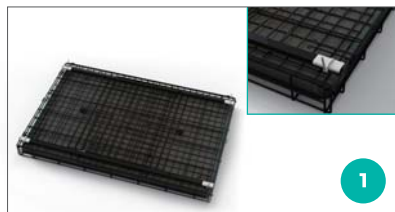
HEAVY DUTY ENHANCED LOCK
SLIDING DOUBLE DOOR FOLD & CARRY WIRE DOG CRATE & MAT KIT
INSTRUCTION MANUAL

PARTS INCLUDED

- ☑ Folded Crate
- ☑ Plastic Pan
- ☑ Carrying Plastic Handle - the handles included with this crate are repositionable and can be used for transporting an unassembled crate.
- ☑ Crate Mat

DOG CRATE ASSEMBLY INSTRUCTIONS

Assembly instructions for Enhanced Lock Sliding Double Door Fold & Carry Wire Dog Crate models 297460, 297461, 297462.



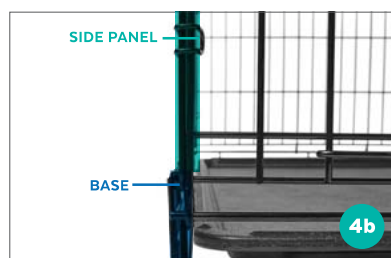
STEP 1 Remove the folded crate from the carton and place it on the floor with the plastic pan on the bottom and remove the protective foam.



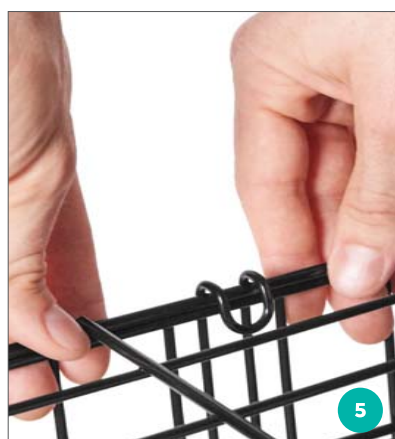
STEP 2 Unlatch the lock(s) on the side of the crate.



STEP 3 (a) Unfold the top of the crate like a book so it lies flat on the ground.
(b) Using both hands, grab the top panel and pull it upward. You will see the main structure of the crate begin to form.



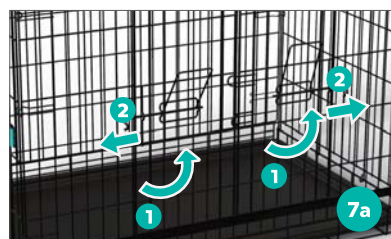
STEP 4 (a) While holding the top of the crate to keep it from falling, reach inside and pull the door panel toward you until it fits into the U-shaped hooks on the side panels.
Tip: While lifting panel, wiggling will help clear any obstacles to assemble properly.
(b) The side panels should rest inside the base of the crate as indicated.



STEP 5 To secure the door panel, pull it forward and then push down on the top panel. Position the U-shaped hooks on top of the door panel over the wire on the top panel. Repeat this process to secure the back panel.



STEP 6 (a) To open door(s), press the teal lock device and turn the wire lever to the unlocked position.
(b) To lock door(s), turn the wire lever to the locked position, make sure they are firmly in place and press the teal lock device.



STEP 7 (a) Lift the door lock handle.
(b) Pull the handle to slide the doors open.

For questions, please call 1-800-672-4399.

PLASTIC PAN INSTRUCTIONS



STEP 1 From the front of the crate, lift the pan above the pan-locking latch, then push the pan-locking latch inward under the pan.



STEP 2 Remove the pan by sliding it out toward you from the front of the crate. Reverse steps to reinsert pan and reengage the pan-locking latch.

Tip: Please remove the mat before removing the pan.

For all models, make sure to secure the 3 hooks on each side of the front and back panels. There will be 2 U-shaped hooks and 1 N-shaped hook to secure.

FINAL ASSEMBLY CHECKLIST

Before introducing your pup to their new castle, remember to double-check the following:

- Check that the side panels are resting inside the base of the crate.

NOTE:

- Never put your pet into their crate without the pan in place or the pan-locking latch engaged.
- Please do not attempt to remove or reinsert the pan in any other way than the one described here or it may break or be damaged.
- Never remove or replace the pan while your pet is in the crate.

To order a replacement pan, call 1-800-67-CHEWY or visit www.chewy.com.

WEIGHT RECOMMENDATIONS

For your pet's safety, please follow the recommended weight limitations for each crate model. Never use a crate for a pet that exceeds the maximum stated weight.

INTERMEDIATE 36 in (36 in L x 25.5 in W x 26.5 in H) (91 cm x 64.7 cm x 67.3 cm) **41-70 lbs** (18.6-31.8 kg)

LARGE 42 in (42 in L x 29 in W x 30 in H) (107 cm x 73.6 cm x 76.2 cm) **71-90 lbs** (32.2-40.8 kg)

X-LARGE 48 in (48 in L x 30.5 in W x 32.5 in H) (122 cm x 77.5 cm x 82.6 cm) **91-110 lbs** (41.3-49.9 kg)

NOTE: Crate size may vary based on assembly.

MAINTENANCE

To provide your pet with the most comfortable "castle" possible, clean your pet's crate routinely with a mild, non-toxic cleaner and water.

For questions, please call 1-800-672-4399.

