

**frisco.**  
better pet goods



# 🐾 CAT HOUSE 🐾 INSTRUCTION MANUAL

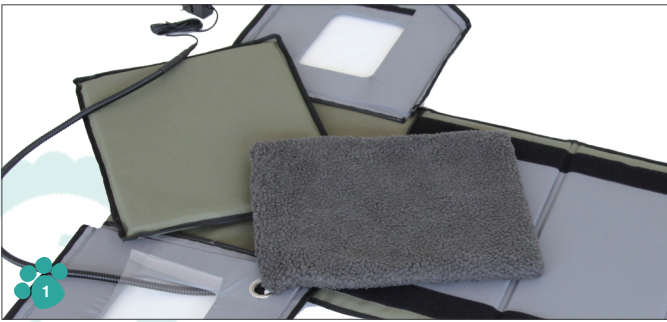


SKU # 297465/297466/297467  
Please read this manual carefully before using.

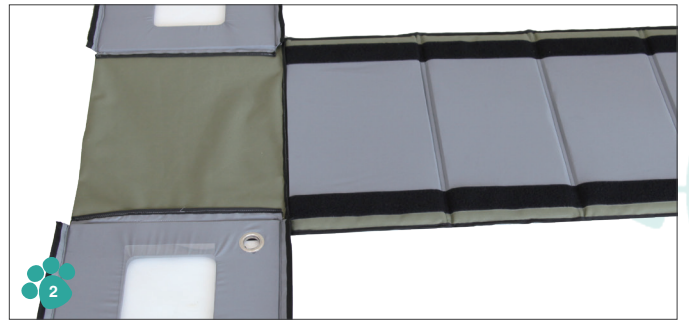
FC

## PARTS INCLUDED

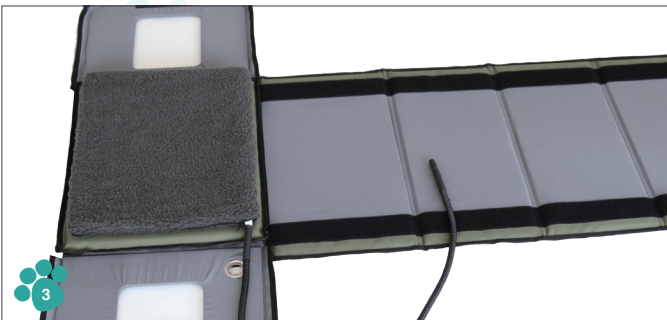
- ✓ Cat House + 2 Flap Doors With Self Fasteners
- ✓ Sponge Pad
- ✓ Heating Pad+Fleece Cover+Grommet
- ✓ Cord Protector/Pad Side Power Cord With Connector
- ✓ Power Adapter Cord With Connector



**Step 1** Take out cat house and sponge pad from the retail box, lay them flat as in above image.



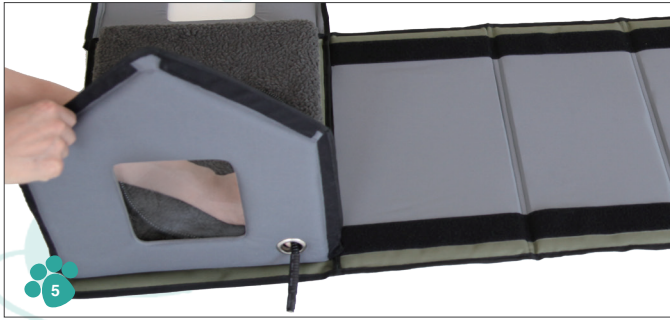
**Step 2** Put the sponge pad at the bottom first.



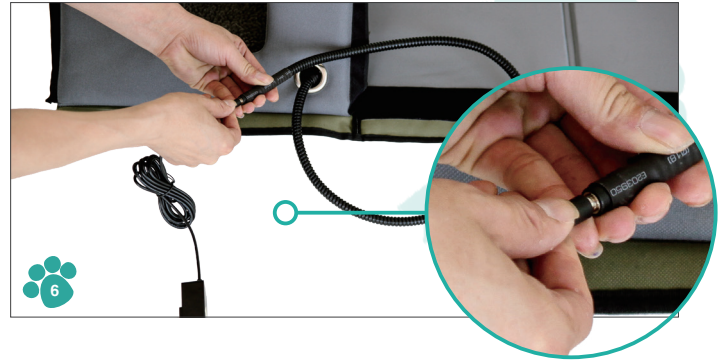
**Step 3** Put the heating pad on the sponge pad.



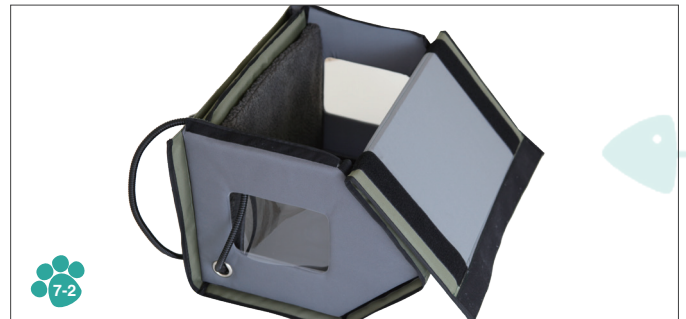
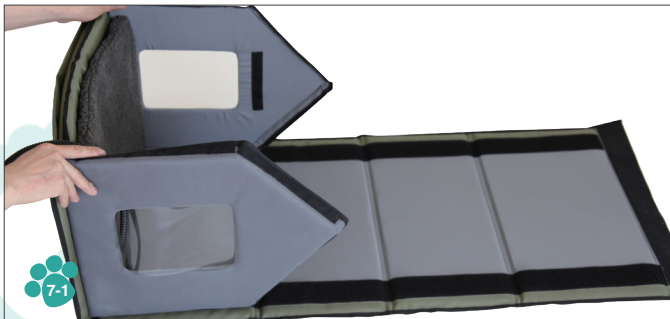
**Step 4** Put the clear door flaps inside by using the self-fastener strip. Press the self-fastener strip firmly to avoid falling down.



**Step 5** Raise back end door panel. Pass the cord protector through the grommet.



**Step 6** Connect the Male/Female power cords.



**Step 7** Roll the house (step 7-1) to make the self-fastener strip fasten securely along both edges, see (step 7-2).



**Step 8** Locate the self-fastener strip to the bottom panel and press firmly. The cat house is complete.

# WARNING

This is an electrical product. Read all directions and precautions carefully before operating. Failure to properly follow all directions and instructions may lead to electrical shock or fire which could cause serious bodily injury.

- DO NOT use appliance for anything other than its intended use.
- DO NOT operate any electrical appliance with a damaged cord or plug, or if the appliance malfunctions or has been damaged in any way. RETURN all malfunctioning appliances to the factory for examination.
- Use only with cover recommended in the instruction manual.
- DO NOT puncture sponge pad and heating pad.
- DO NOT fold sponge pad and heating pad.
- Locate power cord properly to prevent pet entanglement.
- Never pull this pad by the power cord. DO NOT use the power cord as a handle. Unplug when not in use.
- Fabric cover is machine washable, hang to dry before use.
- DO NOT use on humans.
- Indoor use only.
- To protect against electrical hazards, DO NOT immerse cord, plug, or appliance in water or other liquid.
- Close supervision is necessary when used by or near children.
- DO NOT cover the heating pad or cat house with blankets or materials. Other coverings may not allow heat to radiate properly and could cause elevated operating temperatures and pad failure.
- For use in enclosure only - The heated pad is an electrical device and must only be operated inside this cat house.

## SAVE THESE OPERATING INSTRUCTIONS:

- 1.Unzip the cover completely.
- 2.Insert PVC pet heating pad into fabric cover . None of the PVC pet heating pad should be visible when the zipper is closed.
- 3.Connect the power cord by plugging the cord into a standard wall outlet, 100-240V, 50/60 Hz.
- 4.Place directly on a hard, flat surface in your home.
- 5.Plug into a 110-120 volt AC outlet and allow 15-20 minutes for your heating pad achieve maximum operating temperature. The built in thermostats will automatically regulate the heating pad temperature.
- 6.DO NOT obstruct entry/exit flap doors.
- 7.To store your heated cat house unplug, clean, and store away when not use.

## NOTICE:

This heated pet pad is designed to provide low-level warmth optimized for the comfort and needs of your pet. To verify the product is warm, press down gently on the center of the pad to feel the heat.

During use, the pad should be warm to the touch but not hot, air inside cat house should be comfortable for your pet and not exceed 26°C / 79°F .

## PRODUCT SPECIFICATIONS:

Input Voltage:100-240V, 50/60 Hz

Output Voltage:12V 1000mA

Power:11 Watts

Cover Materials: 100% polyester

Fill Materials: 100% Polyurethane Foam

Measurements: 18.5in x 14.5in x 16.5in

## CLEANING INSTRUCTIONS:

- 1.Unplug the power cord from the wall outlet.
- 2.Remove PVC heating pet pad from fabric cover, wash the fleece cover on the gentle cycle with cold water, then line dry. Using damp towel to wipe the Heating Pad surface if needed.
- 3.The house can be cleaned using a damp towel or sponge and mild dish washing detergent. Do not machine wash.

## ONE YEAR LIMITED WARRANTY

The warranty does not cover: Acts of God, such as fire, flood, hurricanes and tornadoes.



## FCC Applicable to the Adapter

This device complies with part 15 of the FCC Rules. Operation is subject to the following two conditions: (1) This device may not cause harmful interference, and (2) this device must accept any interference received, including interference that may cause undesired operation.

### Unique Identifier

Trade Name: Power Adapter

Model No.:297465/297466/297467

### Manufacturer

SHENZHEN KEYU POWER SUPPLY TECHNOLOGY CO.,LTD.

ADD:No.13,Lane3,Yuquan East Road,the 2nd Industrial park,Yulv,Guangming District,Shenzhen,China

0755-27826629

### FCC Responsible Party and Distributor, Chewy Inc.

1855 Griffin Road, Suite B-428, Dania Beach, FL 33004

1-800-672-4399

Caution: Changes or modifications not expressly approved by the party responsible for compliance could void the user's authority to operate the equipment.

Note: This equipment has been tested and found to comply with the limits for a Class B digital device, pursuant to part 15 of the FCC Rules. These limits are designed to provide reasonable protection against harmful interference in a residential installation. This equipment generates, uses and can radiate radio frequency energy and, if not installed and used in accordance with the instructions, may cause harmful interference to radio communications. However, there is no guarantee that interference will not occur in a particular installation. If this equipment does cause harmful interference to radio or television reception, which can be determined by turning the equipment off and on, the user is encouraged to try to correct the interference by one or more of the following measures:

- Reorient or relocate the receiving antenna.
- Increase the separation between the equipment and receiver.
- Connect the equipment into an outlet on a circuit different from that to which the receiver is connected.
- Consult the dealer or an experienced radio/TV technician for help

## QUESTIONS?

CALL OUR FRIENDLY CUSTOMER SERVICE TEAM ANYTIME.  
WE'RE HERE 24/7! 1-800-67-CHEWY(672-4399)