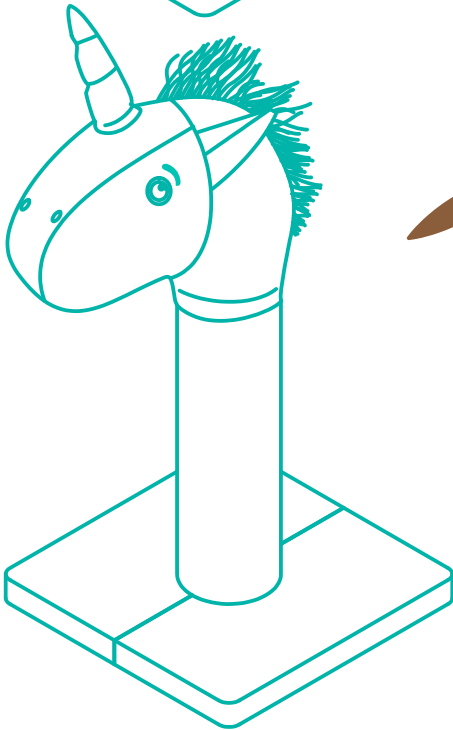
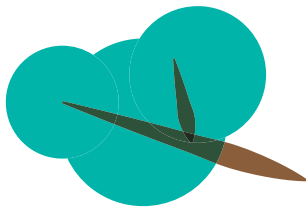
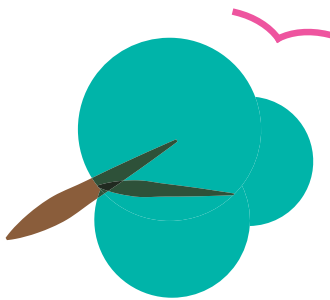
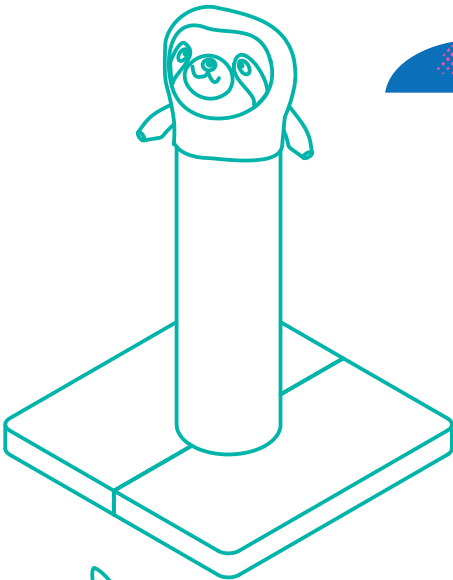
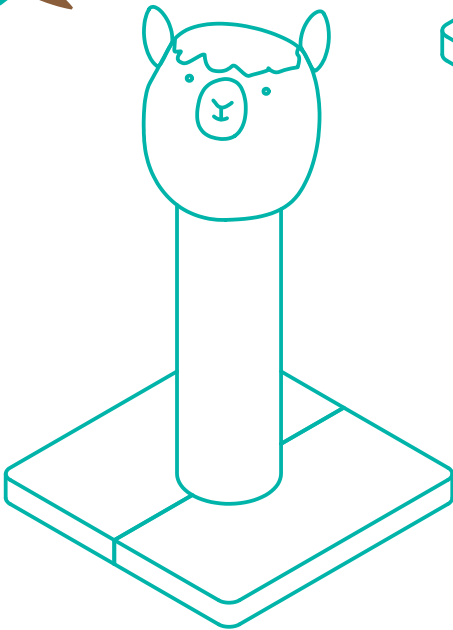
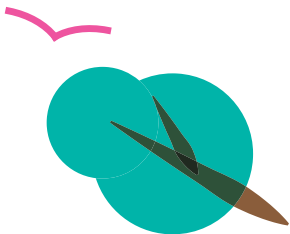
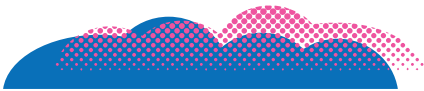


216x280mm



25.59 IN  
HEIGHT



SKU# 289334, 289335, 289336

OVERALL DIMENSIONS  
17.71 in L x 17.71 in W x 25.59 in H  
45 cm L x 45 cm W x 65 cm H

OVERALL DIMENSIONS  
17.71 in L x 17.71 in W  
45 cm L x 45 cm W

# CAT TREE

## INSTRUCTION MANUAL

## WARNINGS & CAUTIONS

PLEASE READ AND FOLLOW ALL WARNINGS AND INSTRUCTIONS TO AVOID PET INJURY OR PROPERTY DAMAGES.

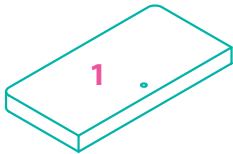
- Keep all tools and instructions in a safe place for future reference.
- Follow the instructions carefully and make sure you've completed each step.
- This cat tree is intended for cat use only, please keep children away.
- Keep all small parts away from children / pets to avoid choking hazards.
- Never climb, rock, shake, step or hang on the cat tree.
- Place your cat tree indoors, away from direct sunlight or damp areas.
- Cat Trees should be placed on a flat, level surface for stability.
- Check your cat tree often for loose screws or parts that might need re-tightening.
- If your cat tree gets torn or damaged, please discard it.
- The product photo may vary slightly from your fully assembled cat tree as this product is continually being enhanced.

## CLEANING INSTRUCTIONS

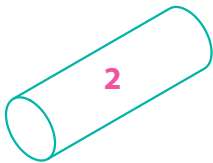
Spot clean stains and vacuum fur (using small handheld or attachment) when necessary.

## COMPONENTS

Prior to assembly, be sure to identify and sort all components shown below.



2PCS Base Board



1PC Scratching Post 450mm

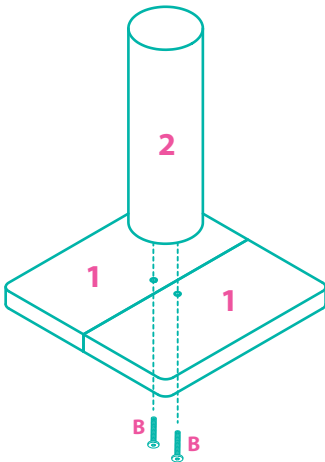


1PC Plush Head

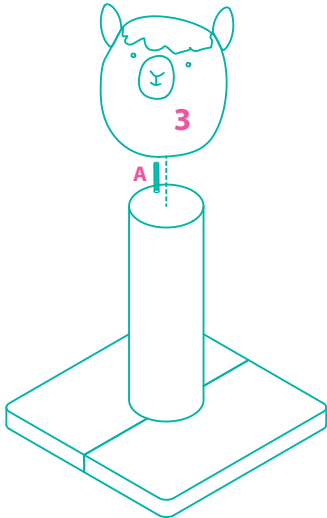
<b>A</b>		M10 x 62mm	1PC
<b>B</b>		M10 x 70mm	2PCS
		5mm Wrench	1PC

## ASSEMBLY INSTRUCTIONS

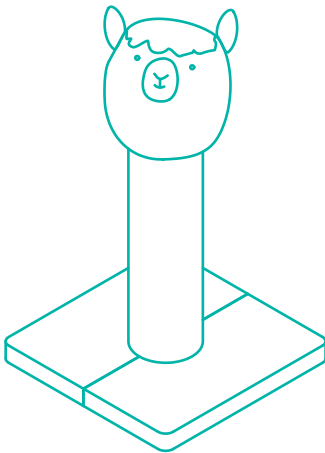
### STEP 1



### STEP 2



### FINISHED ASSEMBLY



Questions? Call our customer service 1-800-672-4399