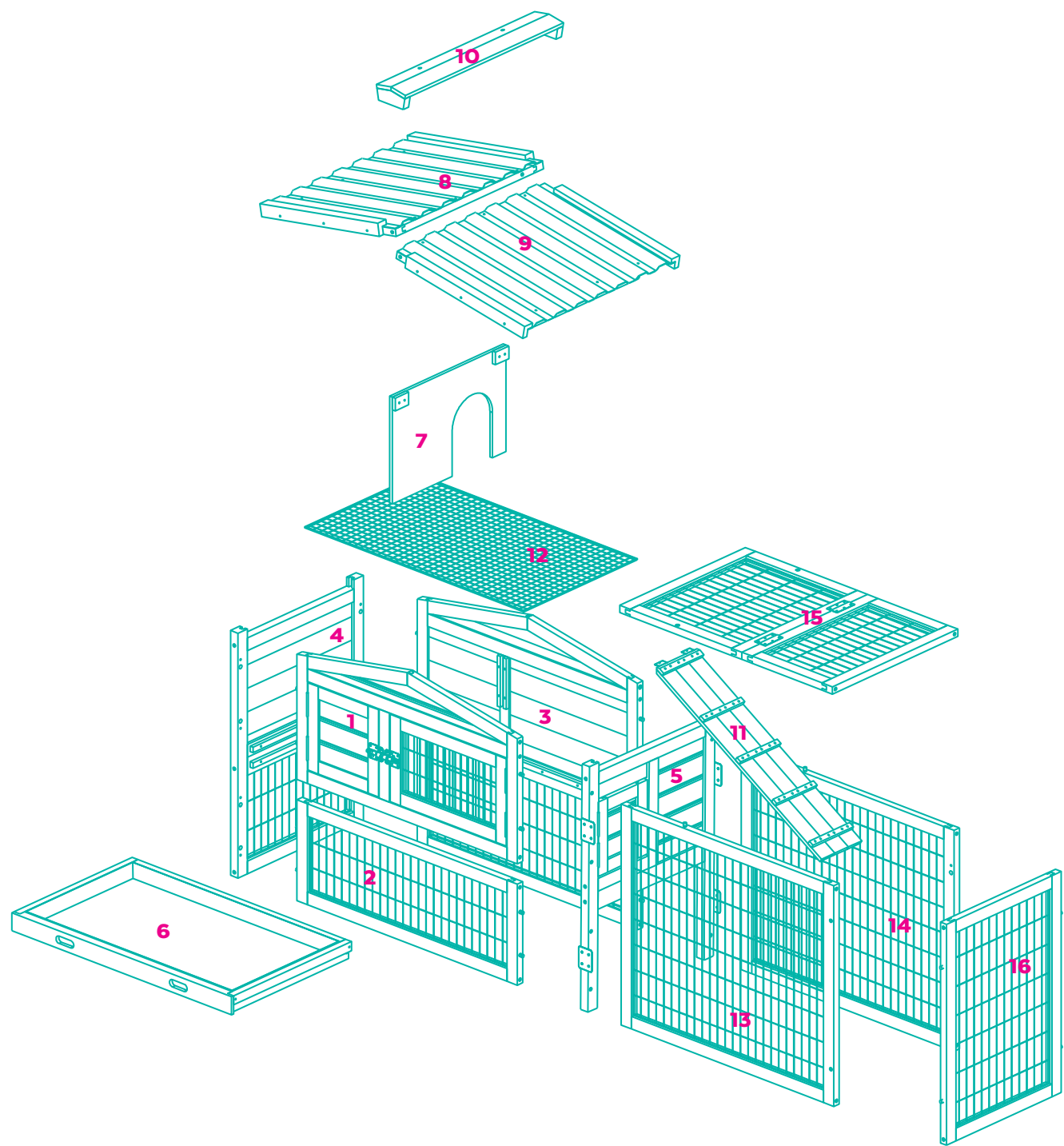


216mm

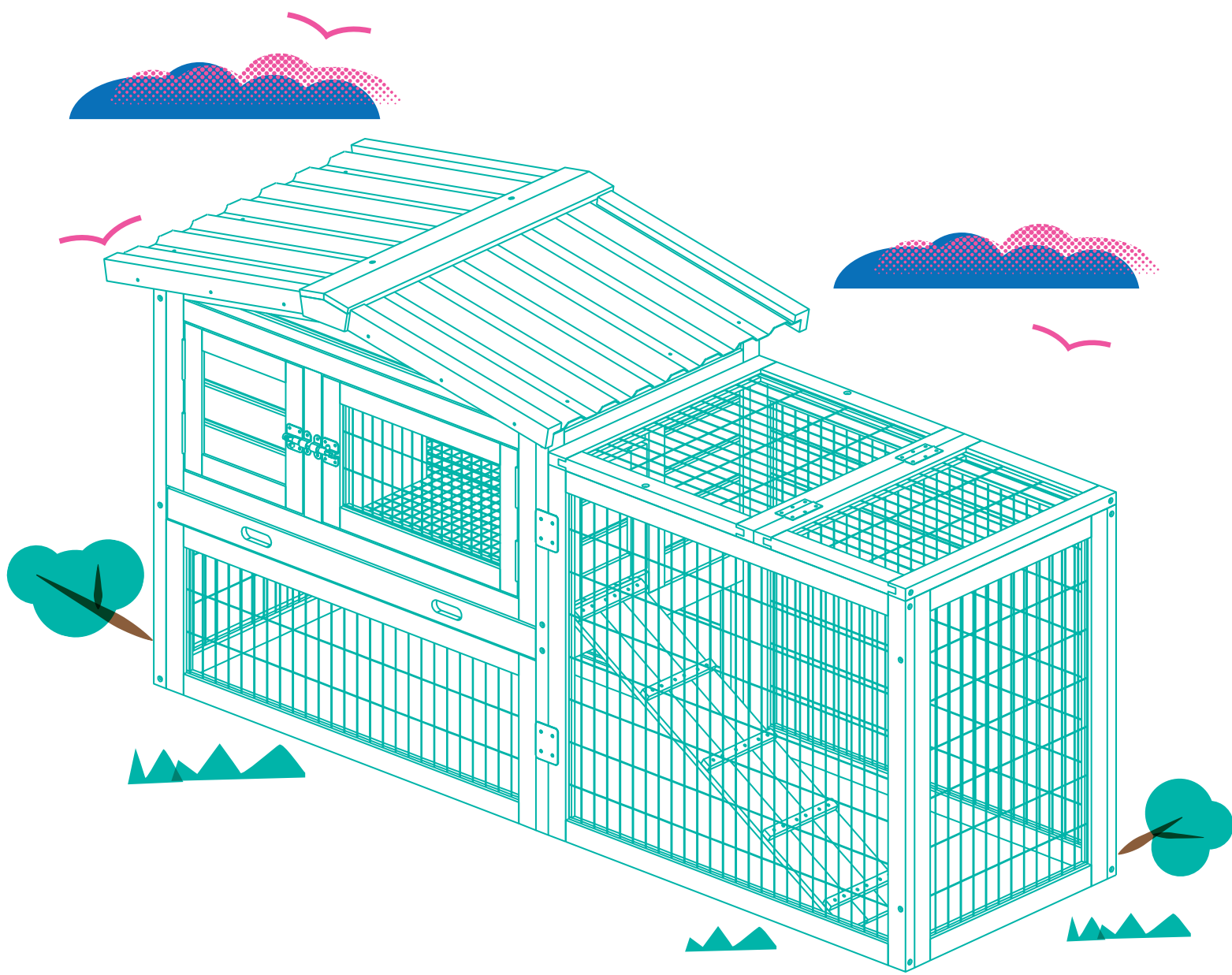
216mm

frisco.  
better pet goods

OVERVIEW



Questions? Call our customer service 1-800-672-4399



SKU# 304043

# WOODEN RABBIT HUTCH

## INSTRUCTION MANUAL

WARNINGS & CAUTIONS

PLEASE READ AND FOLLOW ALL WARNINGS AND INSTRUCTIONS TO AVOID PET INJURY OR PROPERTY DAMAGES.

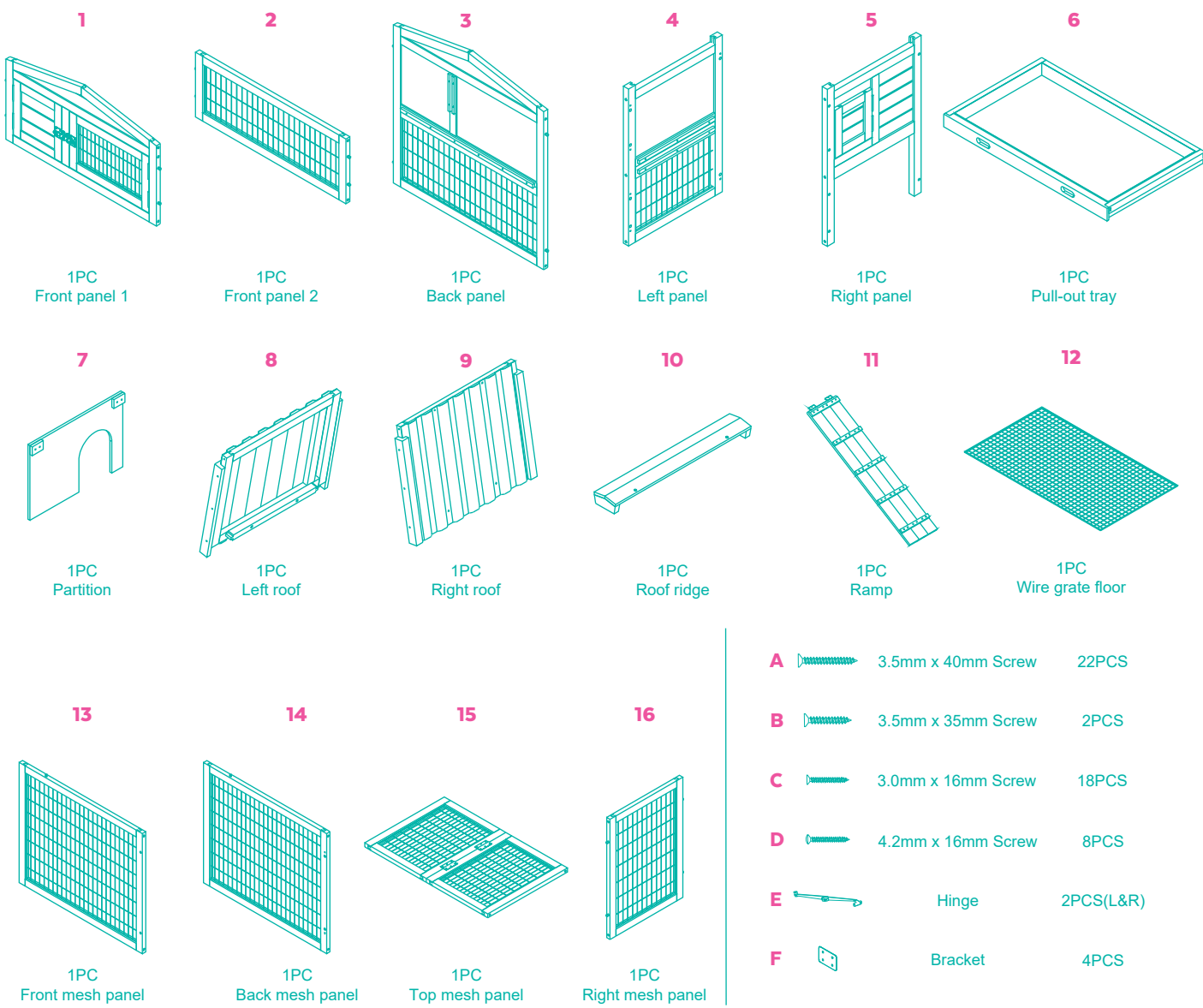
- Follow the instructions carefully and make sure you've completed each step.
- Keep away from heat sources and open flames.
- Do not sit on, climb on or shake the product!
- This wooden product is suitable for providing temporary shelter for your pets in an outdoor environment.
- This product has been treated with a harmless water-based wood preservative solution, which provides basic protection against the elements.
- This product should be re-treated at least once a year with a similar harmless solution to protect the wood.
- Choose a location that is leveled and dry, as well as being as sheltered from the weather as possible.
- This product is not for human use. Please, never allow children to play in or on the house. For pet use only.
- This product is not for cats/dogs. It is meant for rabbits.
- Please be aware that this product is not intended to be chewed on.

GEAR UP

You'll need a Philips head screwdriver (not included) to complete the assembly.

COMPONENTS

Prior to assembly, be sure to identify and sort all components shown below.

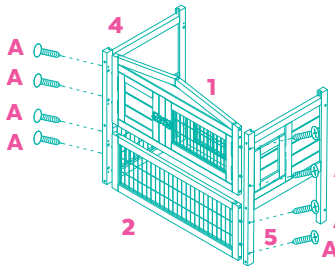


Questions? Call our customer service 1-800-672-4399

ASSEMBLY INSTRUCTIONS

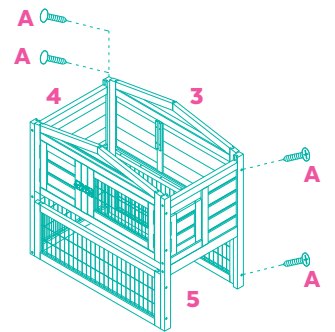
Tip: This item has predrilled holes to make set up easier for your rabbit's home.

STEP 1



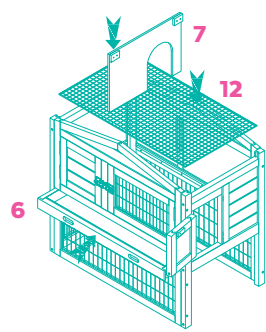
Connect Panel (1), (2) and (4) using Screw (A). Connect Panel (1), (2) and (5) using Screw (A).

STEP 2



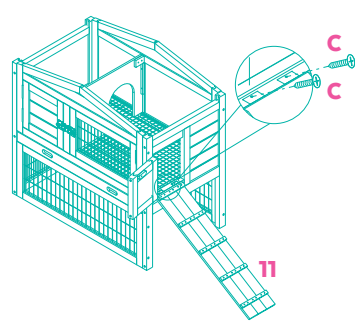
Connect Panel (3) and Panel (4) using Screw (A). Connect Panel (3) and Panel (5) using Screw (A).

STEP 3



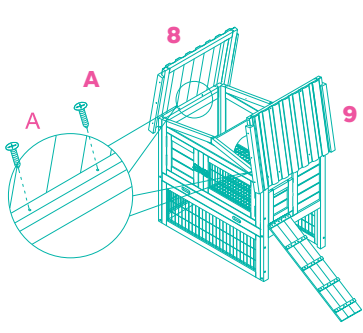
Insert the Pull-out Tray (6). Then open the door to the run so that you can insert Wire Grate Floor (12) above the tray. Insert the Partition (7).

STEP 4



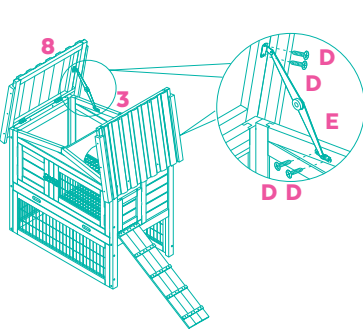
Attach the Ramp (11) using Screw (C).

STEP 5



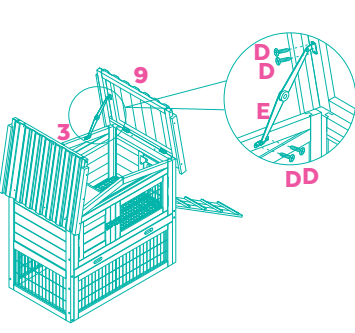
Attach the Left Roof (8) using Screw (A). Repeat the process using Right Roof (9) and Screw (A).

STEP 6



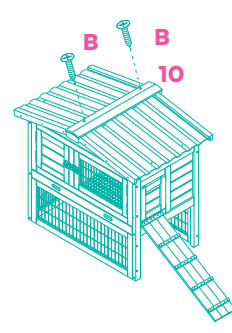
The Hinges (E) are marked L & R by the base of the hinge. Attach the R Hinge to Left Roof (8) and Panel (3) using Screw (D).

STEP 7



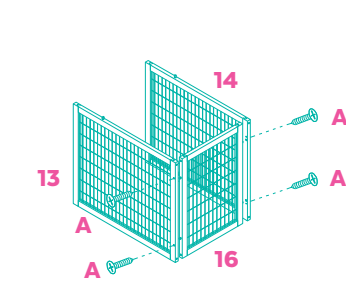
Attach the L Hinge to Right Roof (9) and Panel (3) using Screw (D).

STEP 8



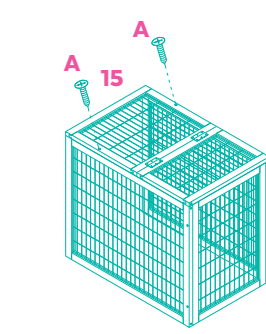
Attach the Roof Ridge (10) using Screw (B).

STEP 9



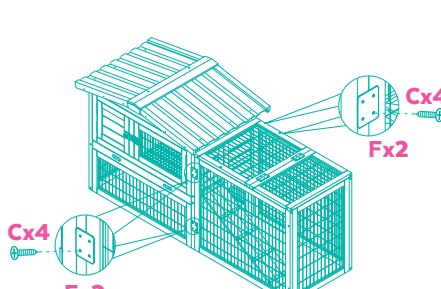
Connect Panel (13) and (16) using Screw (A). Connect Panel (14) and (16) using Screw (A).

STEP 10



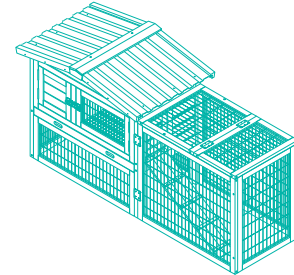
Attach the Top Mesh Panel (15) using Screw (A).

STEP 11



Connect the run to the hutch using Bracket (F) and Screw (C) from front and back.

FINISHED ASSEMBLY



Questions? Call our customer service 1-800-672-4399