

## QUICK START GUIDE

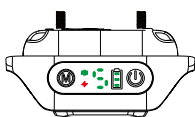
### Bark Collar, Waterproof & Rechargeable Multi Vibrations and Tone, Nylon

Make sure to read this guide carefully and review the warnings and battery-handling instructions in the full instruction manual prior to setting up and using the product.

### How the Collar Works

This collar has five sensitivity levels and uses sound, vibration and static correction to deter barking. As your dog barks, the collar cycles through six steps with different combinations of stimuli. The higher the sensitivity setting, the more sensitive the collar is to sound. Make sure you start at the lowest sensitivity level (1) and work your way up as needed.

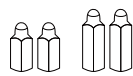
### Components



Collar



Strap



Probes



Probe Covers

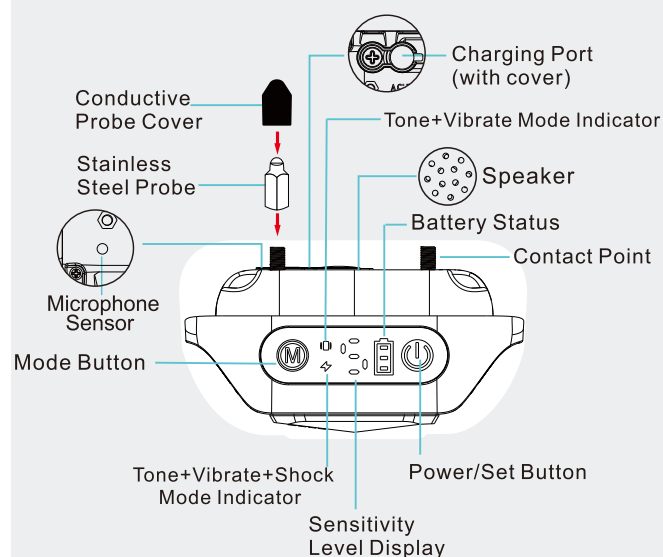


Test Bulb Tool



Charging Cable

### Collar Display



### Before Use

**1. Charge the Collar:** Connect the USB cable and charge for 2-3 hours.

**Blinking battery bar:** Device is charging.

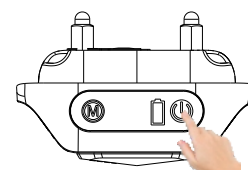
**Solid battery:** Device is fully charged.

**2. Install the Probes:** Install the proper probes and covers. Use the Test Bulb Tool to tighten the probes until snug.

**For short-hair dogs,** use the short probes.

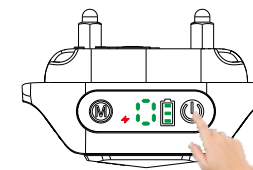
**For long-hair dogs,** use the long probes.

### Testing the Collar



#### 1. Power on the collar.

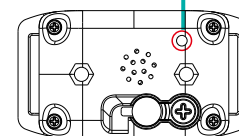
Press and hold the power button for one second.



#### 2. Set the collar to test mode.

Press the power button until the sensitivity level display says 0.

#### Microphone Sensor



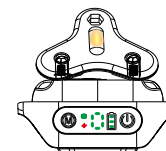
#### 3. Locate the microphone sensor.

Turn the collar so the probes face you. The hole above the probes is the microphone sensor.



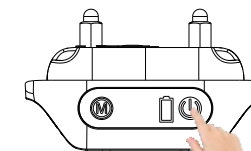
#### 4. Test the collar.

Blow a puff of air toward the hole. The collar will beep, vibrate and deliver a shock.



#### 5. Test the shock function.

Hold the test bulb tool on the probes and blow a puff of air at the hole. The test bulb tool should light up.

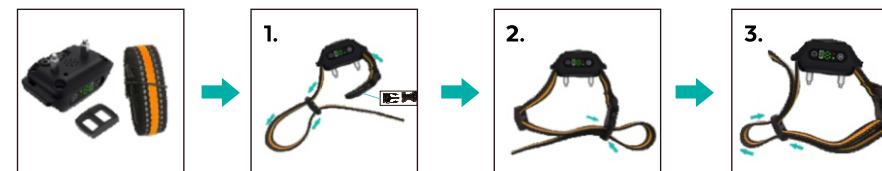


#### 6. Power off the collar.

Press and hold the power button for two seconds.

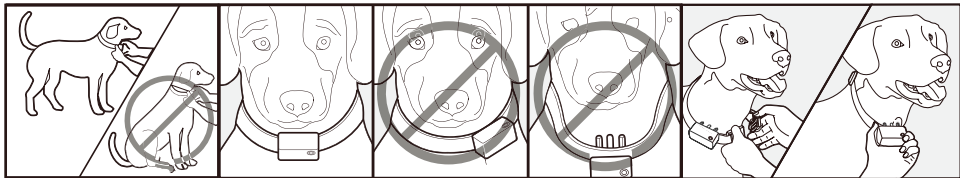
### Attaching the Straps

1. Feed the strap through the openings on the collar and through the slide adjuster.
2. Pull the strap through the clip on the other end of the strap.
3. Slide the strap back through the slide adjuster.



## Fitting the Collar

- 1. With your dog standing, put the collar around their neck.
- 2. Make sure the probes are directly in front of their throat.
- 3. Tighten the collar by using the slide adjuster until you can fit only one finger under the strap.



## Setting Up the Collar

- 1. Power on the collar.** Hold the power button for two seconds.
- 2. Press the mode button to change modes.** The green indicator light means the collar will beep and vibrate when activated. The red indicator light means the collar will beep, vibrate and emit a static stimulus when activated.
- 3. Set the sensitivity level.** Set the sensitivity by pressing the power button. The sensitivity level display will cycle from 0 to 5.

Mode Indicator		Battery Status & Charging Indicators			Sensitivity Level
<b>SOLID</b>	<b>SOLID</b>	<b>SOLID</b>	<b>BLINKING</b>	<b>BEEPING</b>	<b>Level 1-5</b>
Beep + Vibration Mode	Beep + Vibration + Shock Mode	3 bars: Fully charged 2 bars: 2/3 battery 1 bar: 1/3 battery left	Bars blink from bottom to top when charging. All 3 bars blink at once: Battery is low.	When powered on, the device will beep continuously if being charged with an improper charger (input voltage over 5V).	Level 5 is the most sensitive. Level 1 is the least.  Press the power button to change the sensitivity level.

## Frequently Asked Questions

- Q: Why doesn't the collar activate when my dog barks?**  
A: Make sure the product fits snugly. You should be able to fit one finger under the strap. If your dog's barks are weaker, you may need to increase the sensitivity level. You may also need to trim your dog's hair near the probes.
- Q: Why does the collar activate in a noisy environment?**  
A: Some environmental noises may imitate a dog's barking and cause the collar to activate. Lowering the sensitivity can eliminate this issue.
- Q: Can I use the product when there are other dogs around?**  
A: Dogs will bark when playing or excited. For your dog's comfort, we don't recommend using this product with other dogs around.
- Q: How do I know if this collar is right for my pet?**  
A: This product is designed for healthy dogs over six months old and weighing more than eight pounds. Do not use this product on unhealthy or aggressive dogs. If you are unsure if this product is right for your pet, consult your veterinarian or a certified trainer.
- Q: Can this collar stop a dog's howling?**  
A: No, this collar is designed to detect barking only. It cannot detect or stop howling.
- Q: Can I charge this collar with any type of charger?**  
A: No, we only suggest using a charger with a 5V output. Other charges may damage the collar. This collar will stop charging automatically if the input voltage becomes too high and will deliver a warning tone.
- Q: Will my dog stop barking entirely?**  
A: This collar effectively stops all barking. It should only be worn during periods of unwanted barking.
- Q: Is this bark control collar safe and humane?**  
A: Yes. This collar is designed to get your dog's attention, not to punish them. However, the static stimulation may startle them.