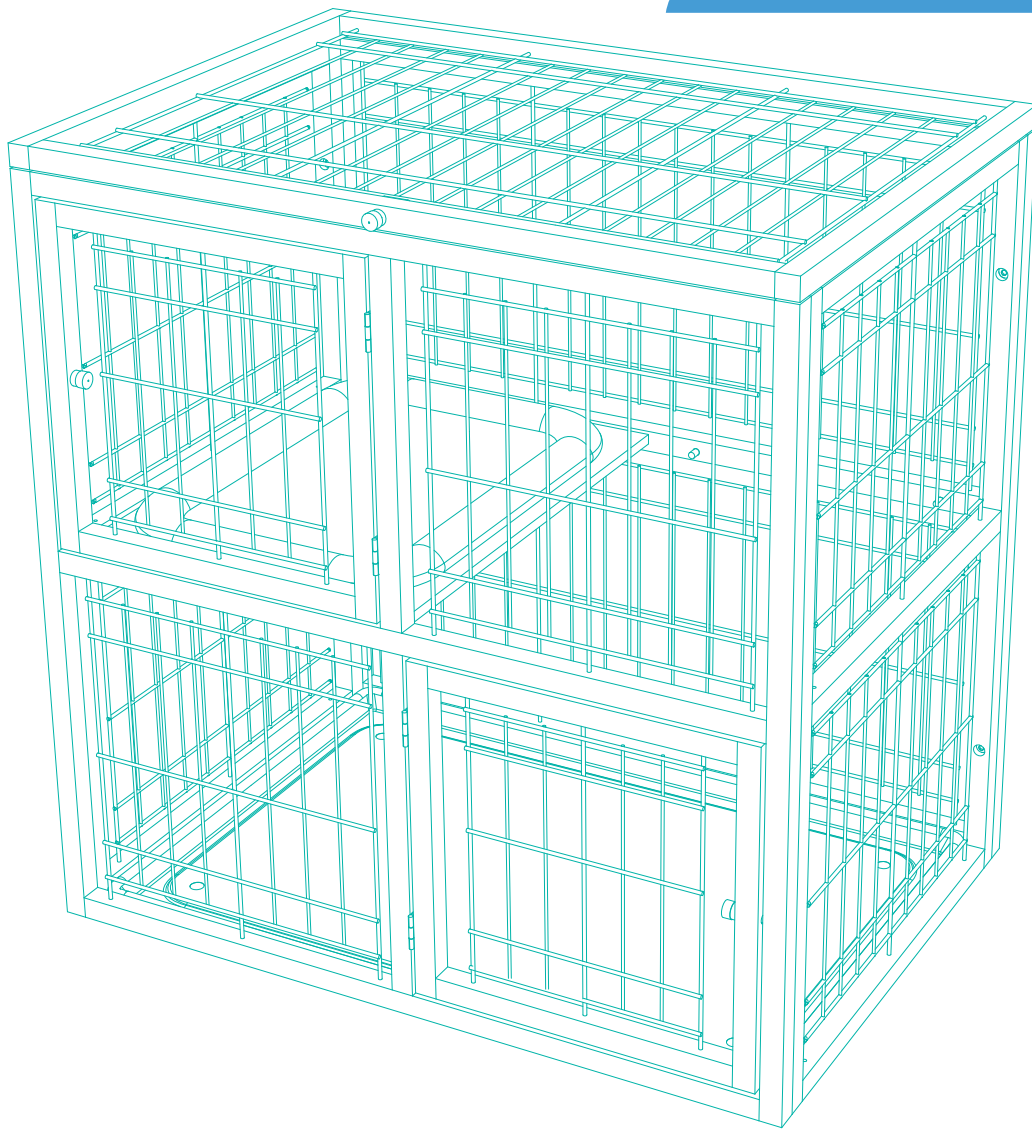
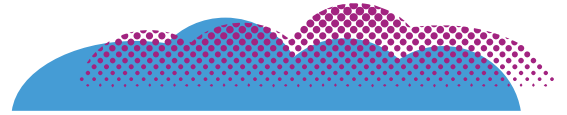
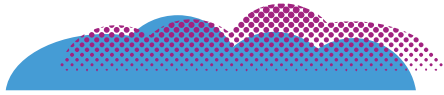


frisco.
better pet goods



SKU# 323214

CAT PLAYPEN 2 STORY

INSTRUCTION MANUAL

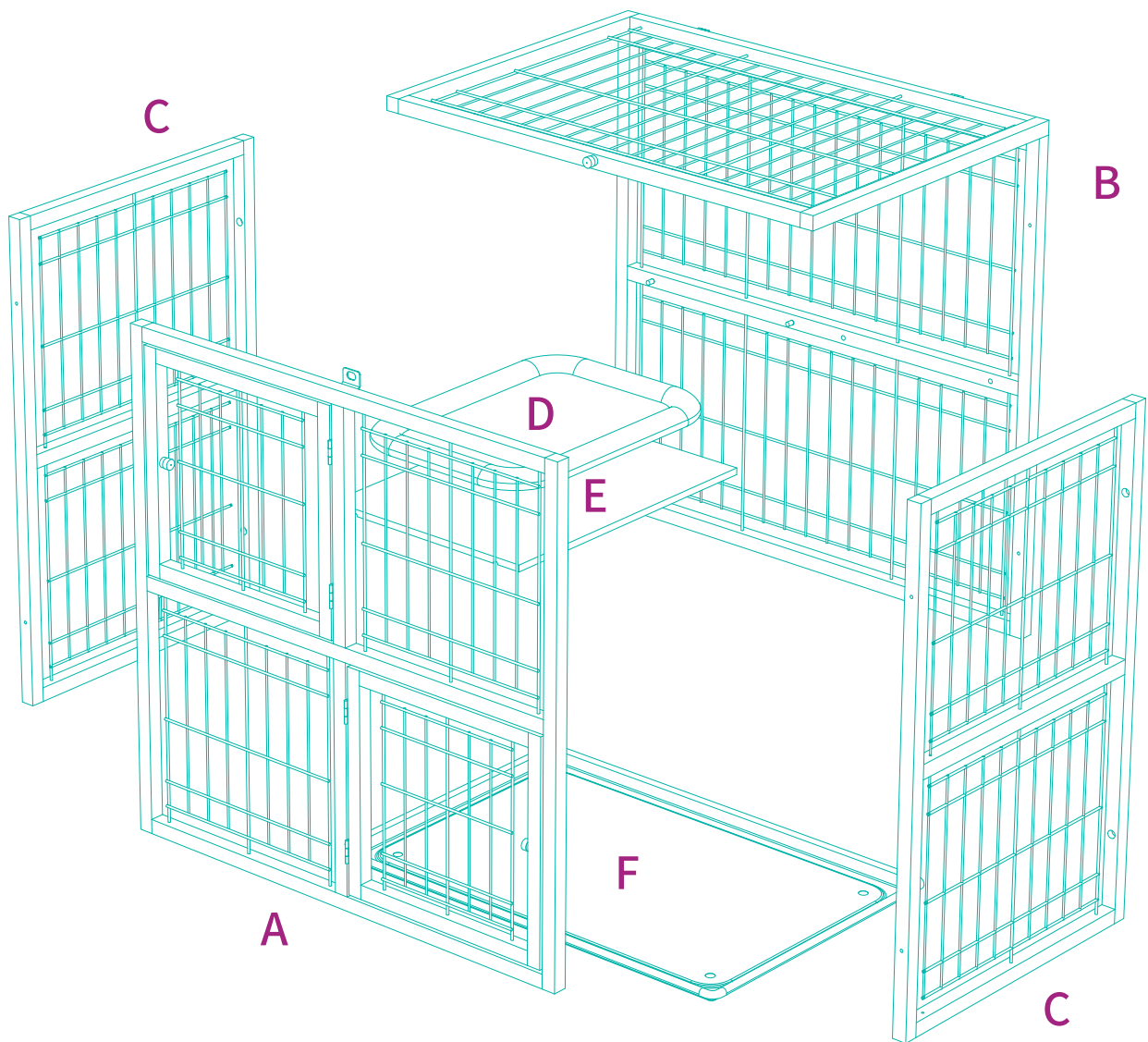
FOR PET USE ONLY

BEFORE ASSEMBLY

- ✓ Read all instructions and confirm all parts are included before starting assembly.
- ✓ Aside from the included parts, you'll also need a Phillips head screwdriver. There are no power tools needed.
- ✓ Do not tighten all bolts and screws completely until the entire playpen has been assembled and set up.
- ✓ Although this playpen can be assembled by one person, we recommend enlisting a friend for easier assembly.
- ✓ To avoid misplacing hardware components, we recommend opening and placing hardware on the pan while assembling the playpen.
- ✓ Do not assemble with pet inside.

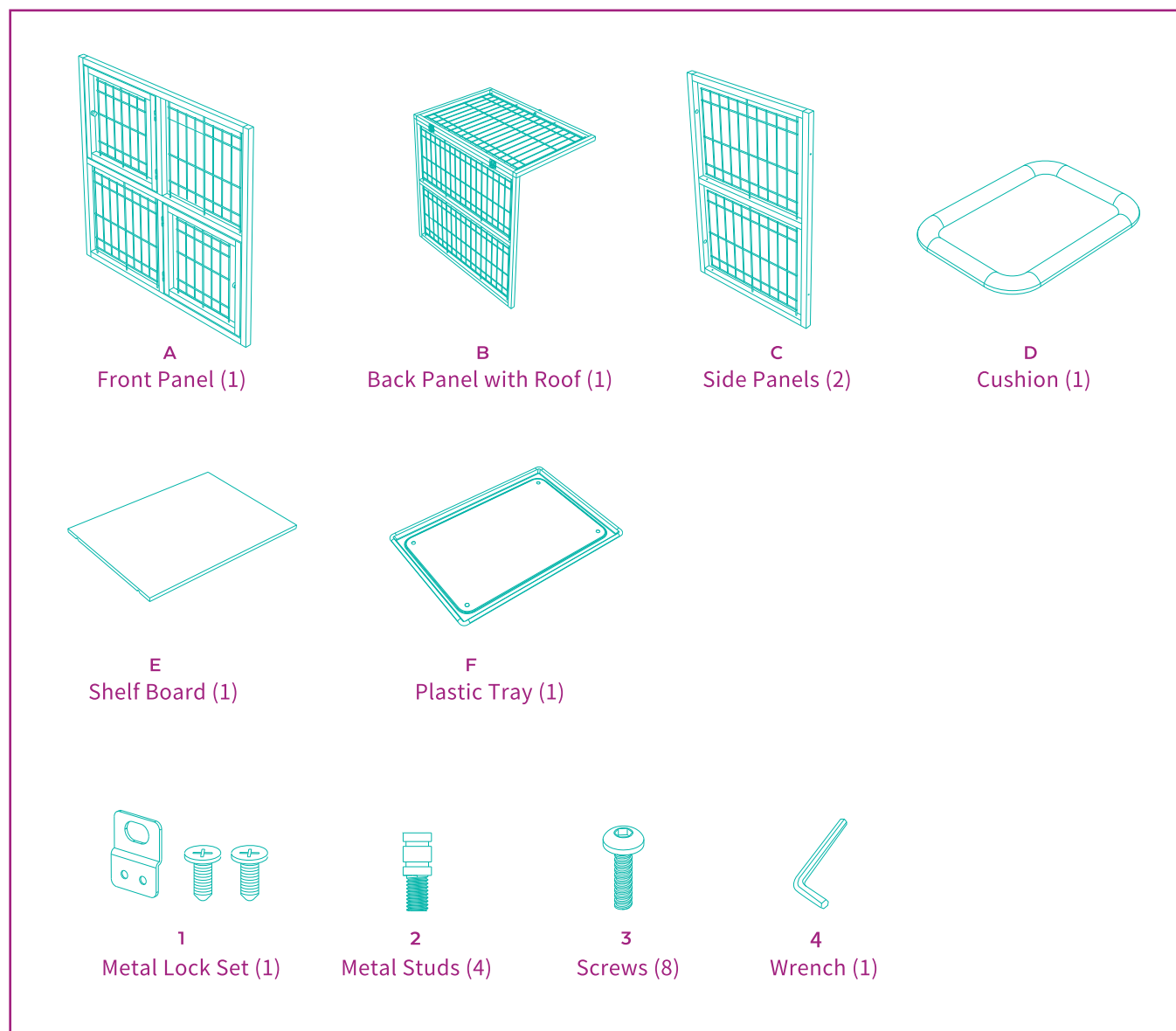


OVERVIEW



PARTS INCLUDED

Prior to assembly, please be sure to identify and sort all parts shown below.



Collapsible Wooden Wire Cat Playpen 2 Story: 34.25in L × 24in W × 35.5in H (87cm L × 61cm W × 90.2cm H)

CLEANING INSTRUCTIONS

Clean the playpen with a soft, dry cloth. Do not use benzene, thinner, wood polish, or any abrasive powder.

WARNINGS AND CAUTIONS

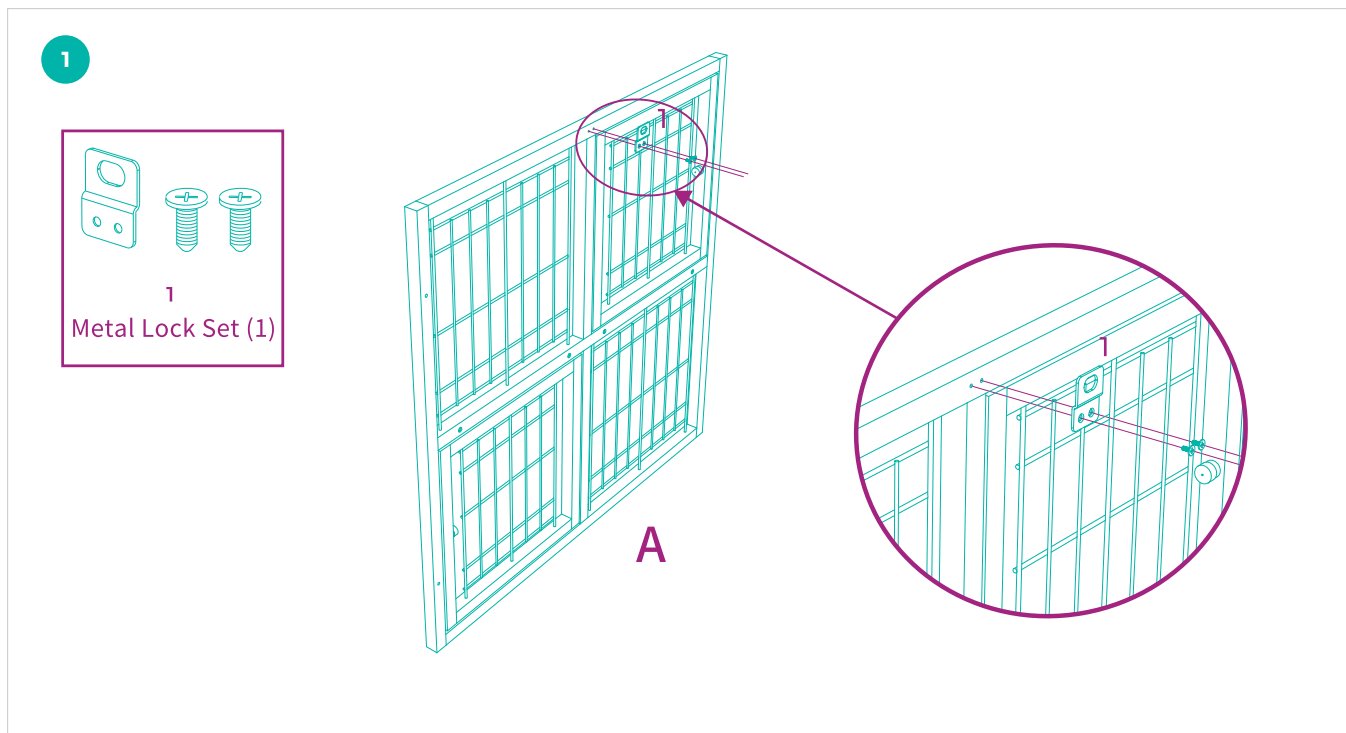
We care about the safety of your pet, so please READ AND FOLLOW ALL INSTRUCTIONS before using this new playpen. If any part is or becomes missing or damaged, do not assemble and discontinue use, as improper use may result in serious injury or even death of your pet.

- Before your pet enters their playpen, make sure that it's secure. Double-check that the playpen is properly assembled, all screws are tightened, and all locks are secure before leaving your pet inside their playpen.
- Always be sure your pet has enough food and water before leaving them in their playpen.
- While we are dedicated to providing the best for your pet, Chewy, Inc. is not responsible for any loss, damage, discomfort, injury, illness, death or costs of any kind as a result of or by use of this playpen.
- Consult your veterinarian about whether it's safe to leave food, toys or other items in the playpen with your particular pet. They all have unique personalities and habits, so what works for one might not work for another.
- Not recommended for outdoor use.
- Never use the playpen without its plastic tray properly fitted and secured, and be sure not to place your pet into a playpen with a damaged tray.
- For pet use only. Please never allow children to play in, on, or around the playpen.

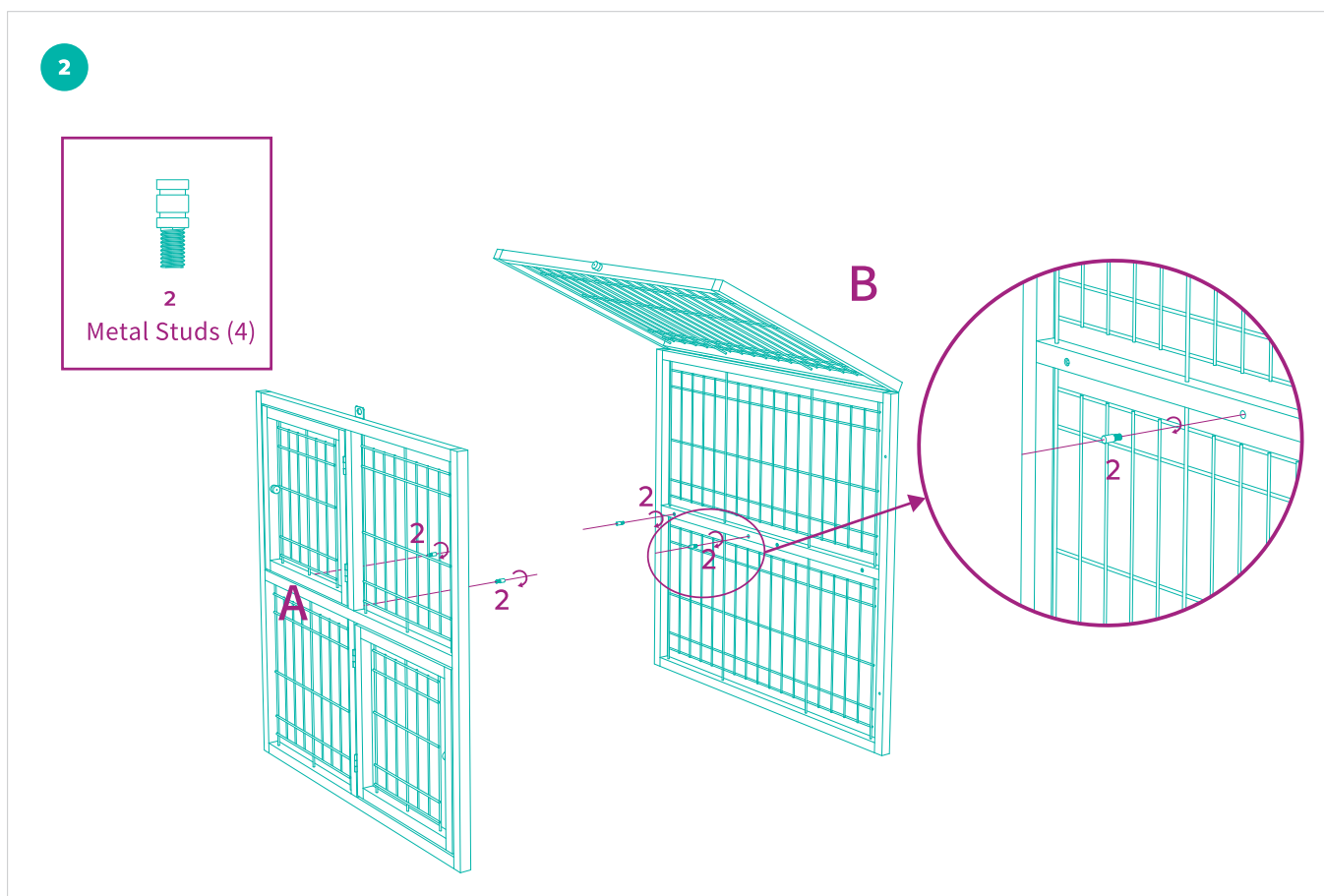
QUESTIONS?

**CALL OUR FRIENDLY CUSTOMER SERVICE TEAM ANYTIME.
WE'RE HERE 24/7! 1-800-67-CHEWY (672-4399)**

CAT PLAYPEN 2 STORY ASSEMBLY INSTRUCTIONS



STEP 1 Assemble the metal lock on the panel A as shown.



STEP 2 Insert metal studs on the inside of panel A and of panel B as shown. The studs will hold the shelf board, panel E.

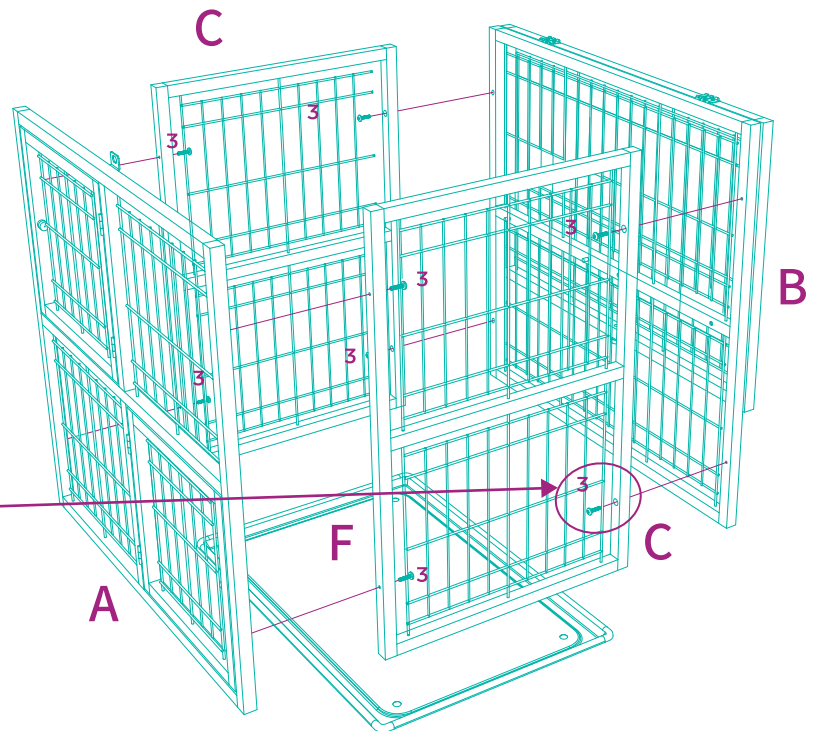
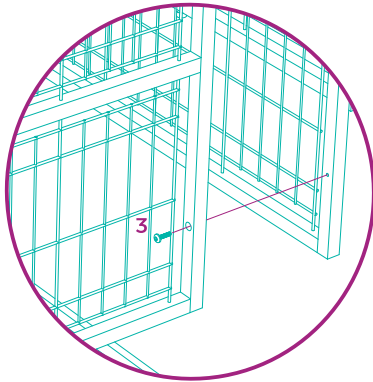
3



3
Screws (8)

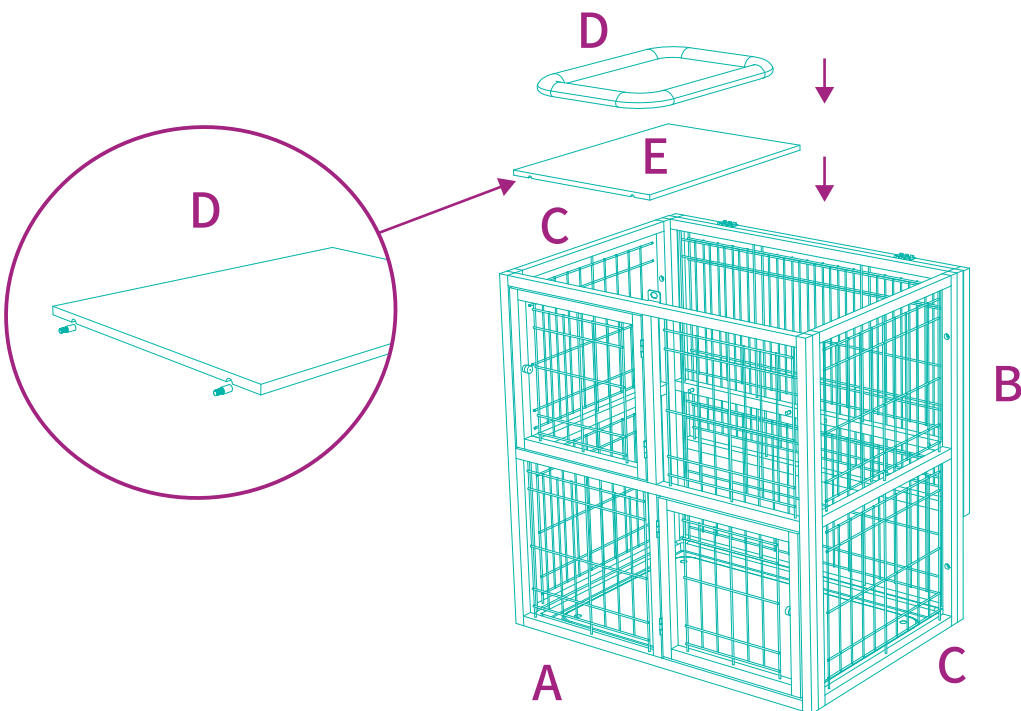


4
Wrench (1)



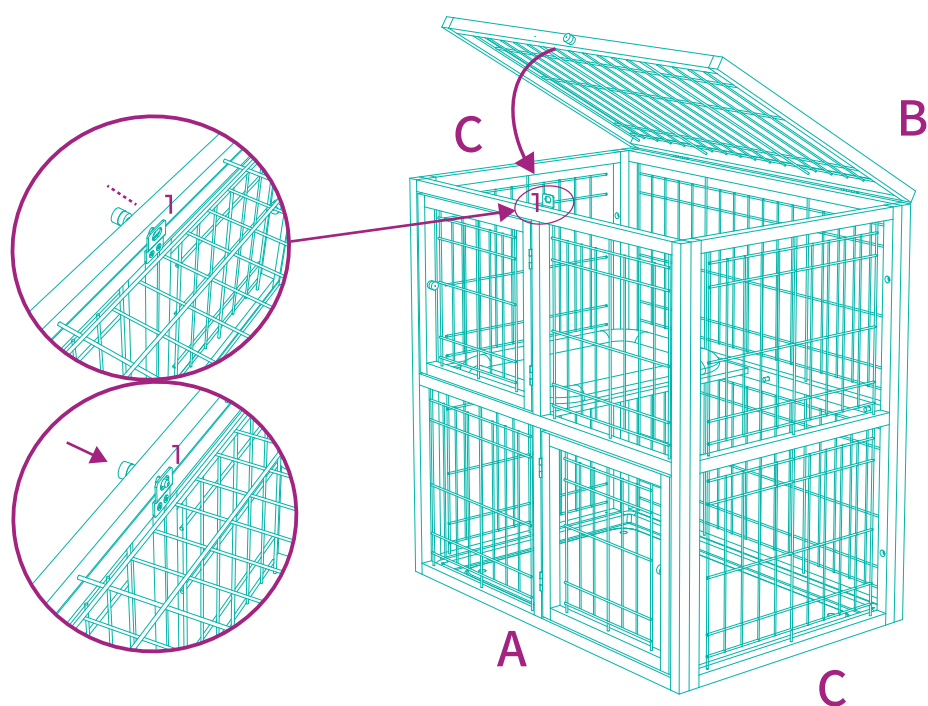
STEP 3 Determine location of the playpen, place the plastic tray F in that location. Assemble panels A, B and C around the plastic tray F (as shown). Screw panels A, B and C together using screws (3) and the wrench (4).
Note, for easier set up, we advise to connect panels A & C first by inserting the all the screws before connecting panels C & B.

4



STEP 4 Place the shelf board E on the metal studs, and then put the cushion D on top of the board.

5



STEP 5 Pull out the button on the roof, then push it to insert into the metal lock (1) to lock.
Pull out the button on the roof to unlock the playpen.