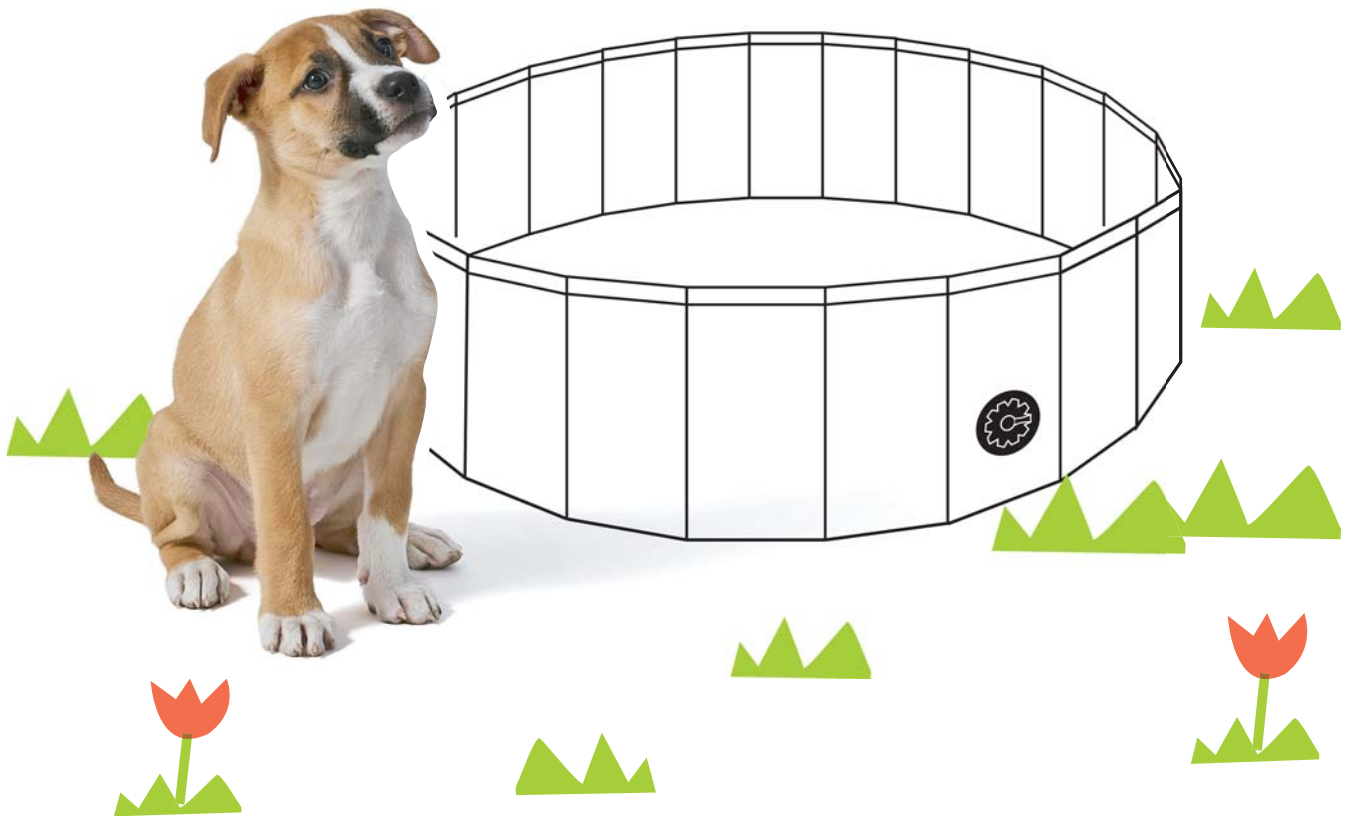
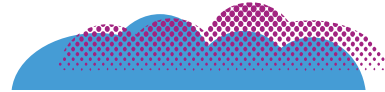
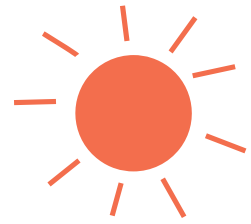
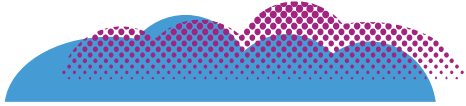


frisco.
better pet goods



DOG POOL

INSTRUCTION MANUAL

FOR PET USE ONLY

FOR PET USE ONLY

IMPORTANT - READ BEFORE SETTING UP THE POOL

- Do not set up on concrete, asphalt or other hard surfaces. Do not set up in direct sun; plastic will get hot.
- Not for use indoors.
- Only set on a grassy, level area free of stones, sticks or dips.
- Please do not let dog(s) in the pool before it is filled up with water.
- Allow a 6.5-foot clearance away from buildings, stairs, fences, walls, water, overhanging branches, washing lines, electrical wires, and other hazards.
- Do not modify the pool.
- Do not set up or use if you suspect any damage to the pool.
- Trim your dog's nails before using the pool to avoid tears or punctures in the plastic.
- Water level recommendation is about 60-80% full.

INTENDED USE

- Use as a pool for dogs only.
- Use outdoors only.

WARNINGS

- Not a toy.
- Not for use with children due to the risk of drowning. Keep away from children.
- Empty pool after every use.
- Never leave pool unattended in areas children can access.
- Do not leave your dog unattended while in the pool.
- Do not allow your dog to enter the pool if the water is cold to avoid a cold shock.
- Always consult with your veterinarian before use, especially if your dog is sick or has an open wound.
- Do not overfill the pool.
- Do not allow your dog to chew on the pool.
- Change the water as required to maintain hygiene.
- Do not tip to empty the water. Use the drainage outlet. You may tip to empty out residual water.

WHAT'S INCLUDED

- ☒ Dog Pool (with Drainage Outlet)
- ☒ Patch Kit

SETTING UP YOUR POOL

STEP 1 - Scope Out a Spot

Pick an area to set up your pool. It should be level, grassy and pretty roomy.

STEP 2 - Spread It Out

Now that you've picked a spot with plenty of room, unpack and unfold the pool, carefully spreading it out.

STEP 3 - Just Add Water

Once set up, and with the drainage outlet securely closed, fill the pool with water slowly. Don't leave unattended while filling.



PUTTING IT AWAY

STEP 1 - Drain the Water

Open the drainage outlet and let the water drain out.

Do not tip. Only tip the pool to drain residual water.

STEP 2 - Stop, Dry and Fold

Let the pool dry completely before folding up to store it.



STORING THE POOL

Once the pool is completely dry, you can store it away to keep things tidy.

- Store away from moisture and at room temperature.
- Do not store near sharp objects.
- Always keep the drainage outlet closed during storage.

CLEANING THE POOL

Make sure to change the water frequently. Only allow your dog in the pool if the water is clean.

- Warmer weather may require more frequent water changes.
- The best cleaner is soapy water.
- Do not use bleach or harsh cleaning agents.

HOW TO REPAIR YOUR SWIMMING POOL

Cut a patch of appropriate size from the PVC pad. Apply glue to the patch and then adhere the patch to the location on the pool and let dry for at least 5 minutes.




Patch Kit



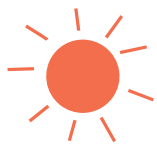
Interior PVC Pad X2



Outer PVC Pad X2



Glue Tube X1



QUESTIONS?

CALL OUR FRIENDLY CUSTOMER SERVICE TEAM ANYTIME.
WE'RE HERE 24/7! 1-800-67-CHEWY (672-4399)