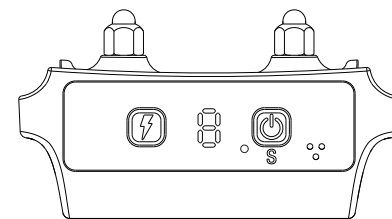


# PATPET USER MANUAL



A01 Bark Control Collar

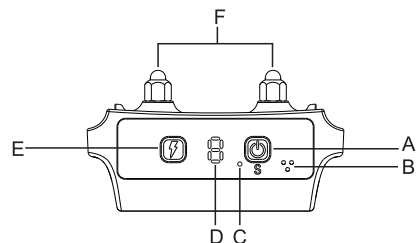
⚠ Please read the user manual before use.

0.3.0.02.A01000-BD-00

## Important Safety Information

- Please read and follow the instructions in this manual.
- Properly fit the collar to your dog is important. A collar worn for too long or made too tight on the dog's neck may cause skin damage ranging from redness to pressure ulcers. This condition is commonly known as bed sores.
- Avoid dogs wearing collars for more than 12 hours a day.
- If possible, please change the collar position on the dog's neck every 1 to 2 hours.
- Never connect a lead to the electronic collar, it will cause excessive pressure on the contacts.
- If rash or sore found, stop using collar until the skin healed
- This product contains small parts, please keep it from children's reach.
- This product is only applied to a healthy dog.

## Get to Know A01



A01 Bark Control Collar

A	On/ Off Button & sensitivity Adjustment
B	Sensor
C	LED Indicator Light
D	LED Display
E	Shock Setting Button
F	Contact Points

## How To Set Up

### Follow the steps to set up the A01 collar

- 1 Insert Batteries (page 4)
- 2 Assemble Attachments (page 5)
- 3 Function Test (page 6)
- 4 Select Mode and Sensitivity (page 6 to 7)
- 5 Collar Fitting. (page 8)

### 1. Insert Batteries

**Step 1**  
Take off the battery cover from the back of the collar (1A).

1A

**Step 2**  
Insert the batteries according to the engraved mark, negative (-) first, positive (+) next (1B)

1B

**Step 3**  
Put the battery cover back. (1C)

1C

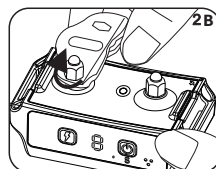
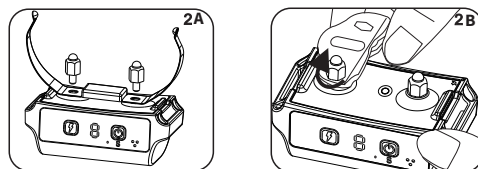
### ⚠ CAUTION

Old and new AAA alkaline batteries can not be mixed with other batteries or be recharged. Please remove the batteries if not in use.

## 2. Assemble Attachments

**Step 1:** Take out the screws and metal shrapnel and install them in the correct order, refer to Figure 2A.

**Step 2:** Use the test light to fix the screws, refer to Figure 2B.



**Caution** ⚠  
Please install metal plate to prevent skin irritation .  
Before installing the metal plate, please turn off the device.

### Step 3: Turn on the Collar

- Press the On/Off button.
- The LED display is on and indicates that the collar is ready to use.

### Step 4 Turn off the Collar

- Long press the On/Off button for about 3 seconds until the LED display is off.

**NOTE:** To extend the longer power of the batteries, please turn off the collar when not in use.

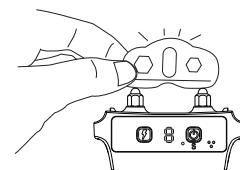
## 3. Function Test

**1** Long press the shock setting button for 3 seconds and enter the test mode. The screen will display "⚡" and flash every 0.5s .

**2** Shout loudly at the device to activate the sensor, the collar will beep, then vibrate , finally shock. This is to test if the three functions work properly.

**3** Long press the shock setting button for 3s again to exit the test mode and enter standby mode.

**4** When the indicator light flashes RED every 4s ,the battery is low . Please replace new batteries to make sure the function can work normally .



## 4. Function Setting

### 1 Sensitivity Adjustment

Press the On/Off button, LED display shows 1-2-3 to adjust the sensitivity. The higher level to set the collar, the sooner it will activate.

### 2 Beep+Vibration

Press shock setting button to adjust the level to "0" .

### 3 Beep+Electric Shock

Press shock setting button to adjust shock intensity ,1-7 level .

### 4 Auto Mode (Beep+Electric Shock)

Press shock setting button to adjust the level to "R".

### Auto Pause

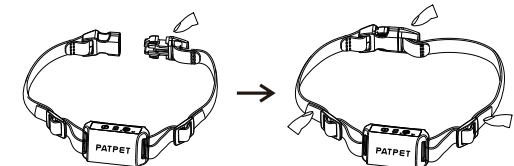
The device will auto-pause for 30s if activated for 7 times within 30s.

### Memory Training

If the device reactivates, the shock level will fall down by 1 levels and progress up gradually. This is to avoid excessive shock to your dog.

## 5.About the removable collar strap

Note ,please cut off the original one before assemble the removable collar strap .

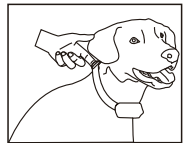


## 5. Collar Fitting

Please fit the collar properly to avoid over tight for the dog. Once the dog's collar is fastened, you should be able to easily slide two fingers under the collar. When you slide the width of your two fingers between the collar and neck, the collar should feel snug, but not tight.

**If too loose:** The collar will move around the dog's neck, thus the shock stimulation cannot work effectively.

**If too tight:** It may cause injury to the dog skin and breathing difficulty.



### ⚠ Caution:

- Turn the collar off before strap adjustment.
- Do not shave the dog's neck as this may increase the risk of skin injury.
- Do not wear the collar more than 12 hours per day. Please adjust the collar position every 1-2 hours. This may cause skin irritation.

## Device Information

### Product Specification

Battery Type	AAA(LR03) batteries
Battery Endurance (typical use)	16 days
Waterproof Rainproof	IEC 60529 IPX5, rainproof
Operating Temperature	0-40°C (32-104°F)

### Change batteries for the unit under any below situations

1. The indicator light on the Collar flashes in RED rapidly every 4 seconds.
2. The indicator light on the collar cannot be lighted on.

Frequently Asked Questions	
Why cannot I activate the device while I shouting "Aa" ?	1.The G-sensor can be activated only when sound and shaking the collar occur together . 2.Please try to turn up the sensitivity , which ranges from 1-3 level .
How old does my dog have to be before using Collar?	Dogs should be at least 6 months old before using the Collar.
Once my dog is trained not to bark for a long time, does the dog have to continue to wear the collar?	No, you can discontinue the use after your dog achieves the desired result.
Does the collar beep/shock to my dog all the time if the dog keeps barking?	The device will auto-pause for 30s if activated continuously for 7 times .

Troubleshooting Guide	
My dog still barks non-stop and the collar seems not working.	<ul style="list-style-type: none"> <li>• Check if the collar is turned on.</li> <li>• Check if the battery volume remains high.</li> <li>• Press on/off button to adjust sensitivity to level 3.</li> <li>• Check if the collar is properly fitted. Refer to the Collar Fitting page for more information.</li> </ul>
The collar can't turn on.	Make sure the collar has new Alkaline battery and correctly inserted.

## Warranty and Repair Information

### 1-Year Limited Lifetime Warranty

• The original purchaser for this product is provided with 1-YEAR WARRANTY. The warranty begins from the date of purchase. For the first year, coverage is for both parts and service fees on warranty repair services.

• Email us at [support@patpet.com](mailto:support@patpet.com) to get another one-year warranty for free.

• Accessories such as straps and batteries are covered for the first year only. After the first year, the Limited Lifetime Warranty covers Parts only and does not cover service fees and parts. All incurred fees including the cost of accessories after the first year and labor cost related to the repair work out of warranty are the customer's responsibility. The service fee will be variable depends on the work hours.

## To Qualify for the Warranty

• A proof of purchase is required to initiate repair work for any models within warranty time.

• We strongly recommend customers keep the original receipt. If the original receipt is not available, the production date of the unit will be judged by the S/N (serial number).

• S/N may differ from the actual purchasing date, is the only method of judging the approximate purchasing date with the purchase proof absent

### Out Of Warranty Range

• We do not offer a warranty for products that have been bought second-hand or as a resold product.

• We do not replace defective Procedure for Repair Work units or provide refunds for products purchased from us after 30 days from the date of purchase.

• Issues of replacement and refunds on units purchased less than 30 days from an authorized dealer must be addressed to the dealer directly. If the products purchased from an authorized dealer are after 30 days from the date of purchase, please send the units to us for service and repair. We do not cover the cost of repairs and replacements due to misuse by the owner or dog, improper maintenance, or unit loss.

• Any water damage on the water-proof collar will not be covered by us, all the relating costs will be responsible by the customer. The warranty is invalid if the unit has been altered or an unauthorized person has damaged the unit while attempting repair work. We reserve the right to retain and discard any parts or accessories that have been found damaged upon replacement and repair.

## Procedure for Repair Work

If the unit is defective, please refer to the above "Troubleshooting Guide" before delivering it back to for service support. The shipping cost will be responsible for the customer. We will not responsible for any unit damage or loss during delivery, also the training time loss or inconvenience while the unit is under repair. We do not provide loaner units or any form of compensation during the repair period. A copy of the sales receipt showing the purchase date may be required before warranty work is initiated. Please offer a brief description of the defective issues and leave us your name, address, phone number, and email address.

### Compliance

#### FCC - USA

This device complies with part 15 of the FCC Rules. Operation is subject to the following two conditions:

- (1) This device may not cause harmful interference.
- (2) This device must accept any interference received, including interference that may cause undesired operation.

This device complies with part 15 of the FCC Rules. Operation is subject to the following two conditions:

- (1) This device may not cause harmful interference.
- (2) This device must accept any interference received, including interference that may cause undesired operation.

**CAUTION:** Modification or dismantling to this equipment not expressly approved by Manufacture may void the user's authority to operate the equipment.

Note: This equipment has been tested and found to comply with the limits for a Class B digital device, pursuant to part 15 of the FCC Rules. These limits are designed to provide reasonable protection against harmful interference in a residential installation. This equipment generates uses and can radiate radio frequency energy and, if not installed and used in accordance with the instructions, may cause harmful interference to radio communications.

However, there is no guarantee that interference will not occur in a particular installation. If this equipment does cause harmful interference to radio or television reception, which can be determined by turning the equipment off and on, the user is encouraged to try to correct the interference by one or more of the following measures:

- Reorient or relocate the receiving antenna.
- Increase the separation between the equipment and receiver.
- Connect the equipment into an outlet on a circuit different from that to which the receiver is connected.
- Consult the dealer or an experienced radio/TV technician for help.

# PATPET

🌐 <https://patpet.com/>

✉ [support@patpet.com](mailto:support@patpet.com)

📘 @PatpetDogCollar

