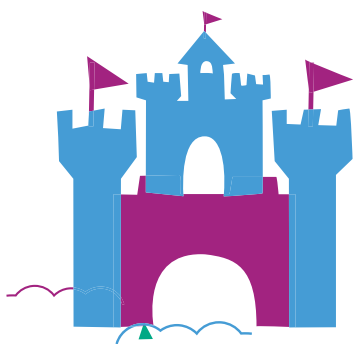
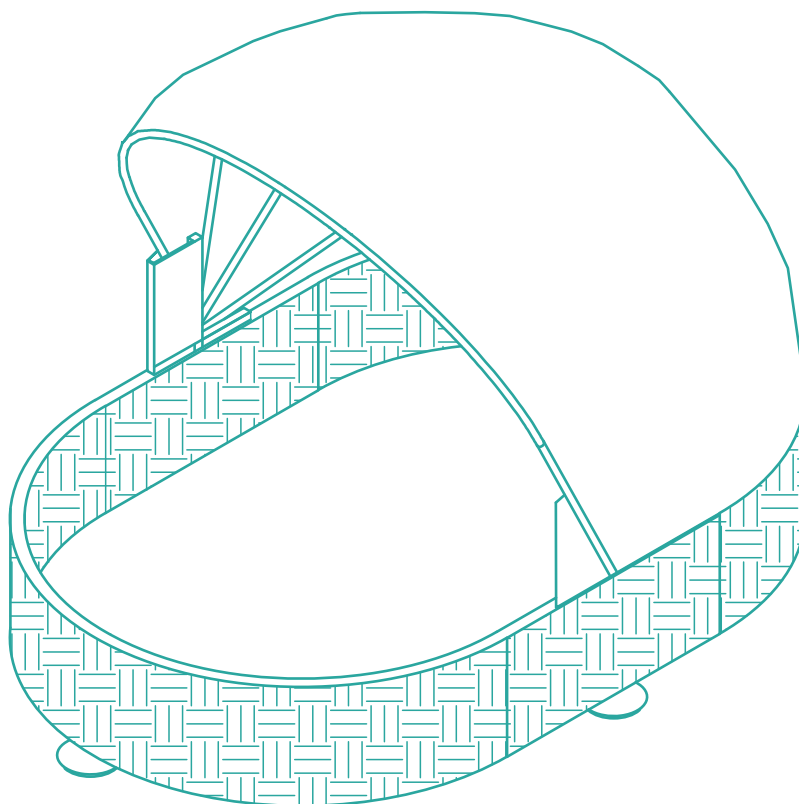
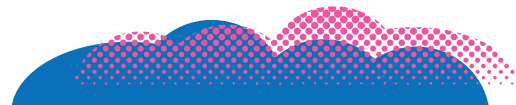
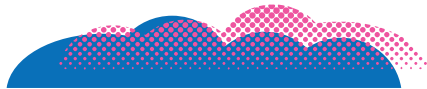


**frisco.**  
better pet goods



**SKU# 363901**

**OVERALL DIMENSIONS**

35.43 in L x 23.62 in W x 25.20 in H

90 cm L x 60 cm W x 64 cm H

# OUTDOOR WICKER RETRACTABLE CANOPY DOG BED

## WARNINGS & CAUTIONS

**PLEASE READ AND FOLLOW ALL WARNINGS AND INSTRUCTIONS TO AVOID PET INJURY OR PROPERTY DAMAGE.**

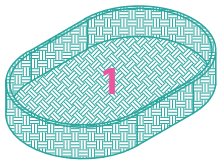
- This is not a toy, not for use with children.
- For dog use only.
- Should only be operated by a responsible adult.
- Keep all tools and instructions in a safe place for future reference.
- Follow the instructions carefully and make sure you've completed each step.
- Keep all small parts away from children / pets to avoid choking hazards.
- Pet beds should be placed on a flat level surface.
- Check your pet bed often for loose screws or parts that might need re-tightening.
- If your pet bed gets torn or damaged, please discard it.
- The product photo may vary slightly from your fully assembled pet bed as this product is continually being enhanced.
- Canopy mechanism has pinch points use care when adjusting.

## CLEANING INSTRUCTIONS

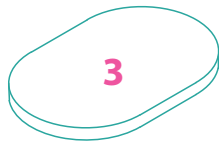
Spot clean with a damp cloth.

## COMPONENTS

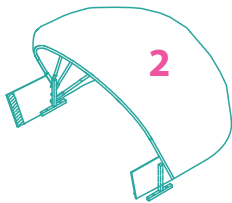
Prior to assembly, be sure to identify and sort all components shown below.



1PC Wicker Bed



1PC Cushion



1PC Canopy



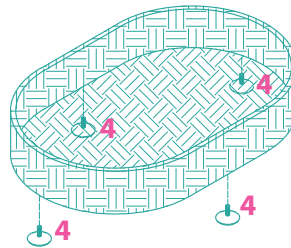
4PCS Adjustable Feet

**A**  6mm x 25mm 4PCS+1PC

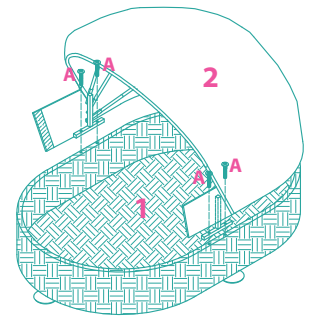
 5mm Wrench 1PC

## ASSEMBLY INSTRUCTIONS

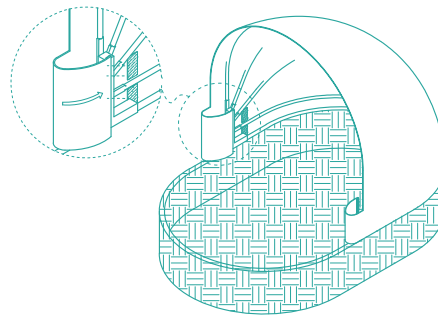
### STEP 1



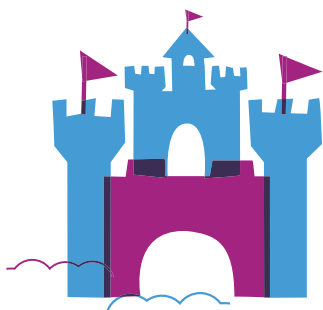
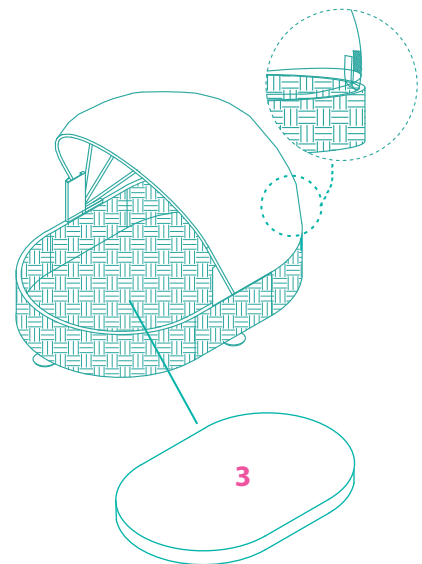
### STEP 2



### STEP 3



### STEP 4



## QUESTIONS?

CALL OUR FRIENDLY CUSTOMER SERVICE TEAM ANYTIME.  
WE'RE HERE 24/7! 1-800-67-CHEWY (672-4399)