



# ADVANTAGE® II for dogs

Once-A-Month Topical Treatment for Fleas and Lice  
For use on dogs and puppies 7 weeks and older  
**READ THE ENTIRE LABEL BEFORE EACH USE.**

For the Prevention and Treatment of Flea and Lice Infestations on Dogs

- Kills all flea life stages
- Prevents fleas on treated dogs from infesting your home
- One treatment prevents further flea infestation for a month
- Kills fleas on dogs within 12 hours of application
- Treats, prevents and controls lice infestations
- Waterproof
- Fragrance-free

Active Ingredients	% By Weight
Imidacloprid.....	9.10%
Pyriproxyfen.....	0.46%
Other Ingredients.....	90.44%
Total.....	100.00%

KEEP OUT OF REACH OF CHILDREN

## CAUTION

### PRECAUTIONARY STATEMENTS

#### HAZARDS TO HUMANS

**CAUTION:** Harmful if swallowed. Causes moderate eye irritation. Avoid contact with eyes or clothing. Wash hands thoroughly with soap and warm water after handling.

FIRST AID	
<b>If Swallowed:</b>	<ul style="list-style-type: none"> <li>• Call a poison control center or doctor immediately for treatment advice.</li> <li>• Have person sip a glass of water if able to swallow.</li> <li>• Do not induce vomiting unless told to do so by the poison control center or doctor.</li> <li>• Do not give anything to an unconscious person.</li> </ul>
<b>If In Eyes:</b>	<ul style="list-style-type: none"> <li>• Hold eye open and rinse slowly and gently with water for 15-20 minutes. Remove contact lenses, if present, after the first 5 minutes, then continue rinsing eye.</li> <li>• Call a poison control center or doctor for treatment advice.</li> </ul>
<b>If On Skin:</b>	<ul style="list-style-type: none"> <li>• Wash with plenty of soap and water.</li> </ul>

#### HOT LINE NUMBER

Have the product container or label with you when calling a poison control center or doctor, or going for treatment. For medical emergencies call 1-800-422-9874. For customer questions call 1-800-255-6826.

#### NOTE TO PHYSICIAN

Treat the patient symptomatically.

#### HAZARDS TO DOMESTIC ANIMALS

**For external use only.** Do not use on puppies under 7 weeks of age or weighing less than 3 lbs. As with any product, consult your veterinarian before using this product on debilitated, aged, pregnant or nursing dogs. Individual sensitivities, while rare, may occur after using ANY pesticide product for dogs. If signs persist, or become more severe, consult a veterinarian immediately. If your dog is on medication, consult your veterinarian before using this or any other product.

#### Side Effects

Monitor your dog after application. Side effects, although very rare, may include signs of skin irritation such as redness, scratching, or other signs of discomfort. Gastrointestinal signs such as vomiting or diarrhea have also been reported. If these or other side effects (such as lethargy) occur, consult your veterinarian or call 1-800-422-9874.

 **DO NOT USE ON CATS. Keep cats away from treated dogs for 24 hours. If applied to a cat or ingested by a cat, contact your veterinarian.**

For consumer questions call 1-800-255-6826.  
For medical emergencies call 1-800-422-9874.

#### RESTRICTIONS:

- Use only on dogs 7 weeks and older. Do not apply to puppies or dogs weighing less than 3 lbs. Do not use on other animals.
- Do not apply more than one (1) tube per treatment.
- Do not have contact or allow children to have contact with treated area until completely dry.

#### DIRECTIONS FOR USE

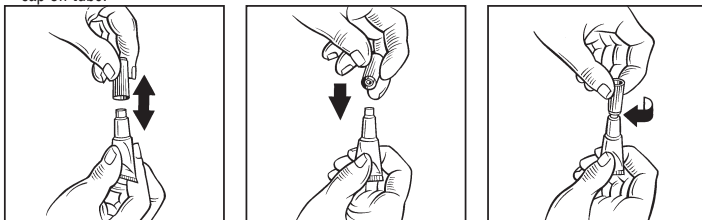
It is a violation of Federal Law to use this product in a manner inconsistent with its labeling.

#### HOW TO OPEN

1. Be sure tube is at bottom of pouch.
2. Using scissors, cut the pouch across the top and remove tube.

#### HOW TO APPLY

1. Remove one applicator tube from the package. See "HOW TO OPEN" section.
2. Hold applicator tube in an upright position facing away from you and your pet's face and eyes. Pull cap off tube.

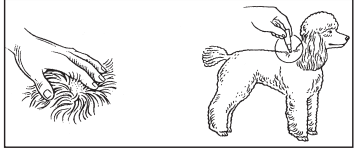


3. Turn the cap around and place other end of cap back on tube.
4. Twist cap to break seal, then remove cap from tube.

3-10 lbs.:

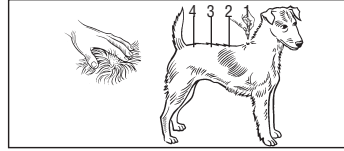


11-20 lbs.:

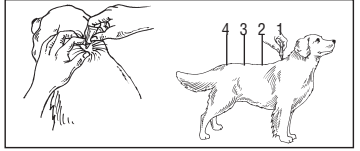


5. The dog should be standing for easy application. Part the hair on the dog's back, between the shoulder blades, until the skin is visible. Place the tip of the tube on the skin and squeeze the tube to expel the entire contents directly on the skin. *Do not get this product in your dog's eyes or allow your dog to ingest this product.* Do not allow the product to run off.

21-55 lbs.:



Over 55 lbs.:



5. The dogs should be standing for easy application. apply the entire contents of the tube evenly to three or four spots on the top of the back from the shoulder to the base of the tail. At each spot, part the hair until the skin is visible. Place the tip of the tube on the skin and gently squeeze to expel a portion of the solution on the skin. do not apply an excessive amount of solution at any one spot that could cause some of the solution to run off the side of the dog. Do not get this product in your dog's eyes or allow your dog to ingest this product.

6. Discard empty tube as described in the Storage and Disposal section.

7. Under normal conditions the product is effective for a month. However, in case of severe flea infestation, retreatment may be necessary earlier than four weeks. Do not retreat more often than once every seven (7) days. After flea control is attained, return to a monthly retreatment schedule.

#### PRODUCT INFORMATION

The successive feeding activity of fleas on dogs frequently elicits a hypersensitivity skin disorder known as flea allergy dermatitis (FAD) or flea bite hypersensitivity. Treatment of dogs with Advantage II for dogs rapidly kills fleas within 12 hours which may reduce the incidence of this condition. Advantage II for dogs kills existing fleas on dogs within 12 hours. Reinfesting fleas are killed within 2 hours with protection against further flea infestation lasting for four (4) weeks. Pre-existing pupae in the environment may continue to emerge for six (6) weeks or longer depending upon the climatic conditions. Fleas, flea eggs, and flea larvae in the dog's environment are killed following contact with an Advantage II for dogs treated dog. Advantage II for dogs provides multi-stage flea control effectively breaking all flea life-cycle stages for quick and lasting control of flea populations.

Advantage II for dogs kills adult fleas quickly within 12 hours, inhibits the development of immature flea life stages and prevents them from reaching the biting adult stage.

Advantage II for dogs kills chewing lice that infest dogs and puppies, and prevents further infestations. Advantage II for dogs is waterproof and remains effective following a shampoo treatment, swimming or after exposure to rain or sunlight.

Monthly treatments are required for optimal control and prevention of fleas.

## STORAGE AND DISPOSAL

Do not contaminate water, food or feed by storage or disposal.

**Pesticide Storage:** Store in a cool, dry place inaccessible to children and pets.

**Pesticide Disposal and Container Handling:** Nonrefillable container.

**If empty:** Do not reuse or refill this container. Place in trash or offer for recycling if available.

**If partly filled:** Call your local solid waste agency or 1-800-422-9874 for disposal instructions. Never place unused product down any indoor or outdoor drain.

#### LIMITED WARRANTY AND LIMITATION OF DAMAGES

Bayer HealthCare LLC, Animal Health Division warrants that this material conforms to the chemical description on the label. TO THE EXTENT CONSISTENT WITH APPLICABLE LAW, BAYER MAKES NO OTHER EXPRESS OR IMPLIED WARRANTY, INCLUDING ANY OTHER EXPRESS OR IMPLIED WARRANTY OF FITNESS OR MERCHANTABILITY, and no agent of Bayer is authorized to do so except in writing with a specific reference to this warranty. To the extent consistent with applicable law, any damages arising from a breach of this warranty shall be limited to direct damages and shall not include consequential commercial damages such as loss of profits or values, etc.

#### Manufactured For

Bayer HealthCare LLC, Animal Health Division,  
P.O. Box 390, Shawnee Mission, Kansas 66201 USA  
Bayer, the Bayer Cross and Advantage are registered trademarks of Bayer  
© 2013 Bayer HealthCare LLC

#### Made in Germany

Advantage II for dogs is protected by the following U.S. patents: 6,232,328 and 6,001,858

#### ADVANTAGE II small dog – For Dogs and Puppies 7 Weeks and Older and Weighing 3-10 lbs.

EPA Est. No. 11556-DEU-1 EPA Reg. No. 11556-128

Four 0.014 fl oz (0.4 mL) Tubes 81297800

Six 0.014 fl oz (0.4 mL) Tubes

#### ADVANTAGE II medium dog – For Dogs and Puppies 7 Weeks and Older and Weighing 11 - 20 lbs.

EPA Est. No. 11556-DEU-1 EPA Reg. No. 11556-125

Four 0.034 fl oz (1.0 mL) Tubes 81297983

Six 0.034 fl oz (1.0 mL) Tubes

#### ADVANTAGE II large dog – For Dogs and Puppies 7 Weeks and Older and Weighing 21 - 55 lbs.

EPA Est. No. 11556-DEU-1 EPA Reg. No. 11556-127

Four 0.085 fl oz (2.5 mL) Tubes 81298033

Six 0.085 fl oz (2.5 mL) Tubes

#### ADVANTAGE II extra large dog – For Dogs and Puppies 7 Weeks and Older and Weighing Over 55 lbs.

EPA Est. No. 11556-DEU-1 EPA Reg. No. 11556-130

Four 0.135 fl oz (4.0 mL) Tubes 81298181

Six 0.135 fl oz (4.0 mL) Tubes

19026

# Bayer