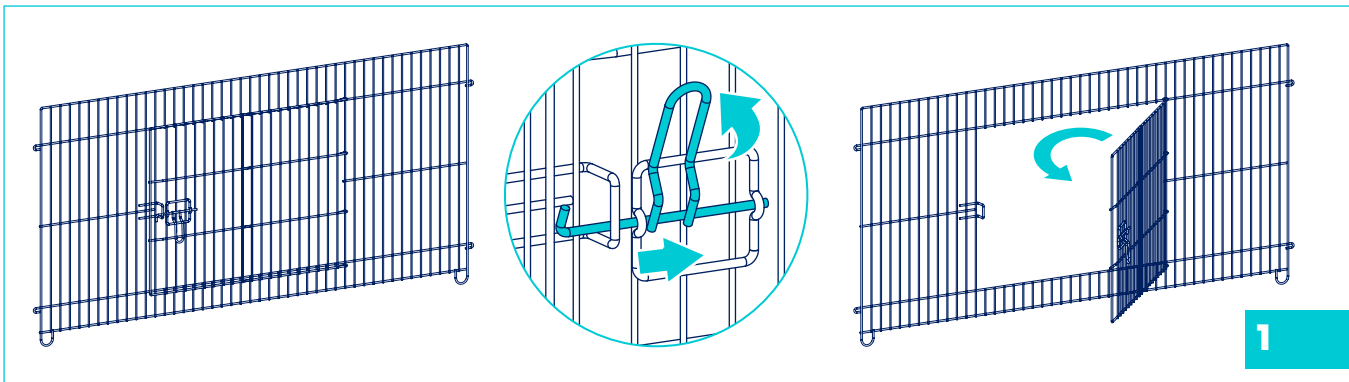
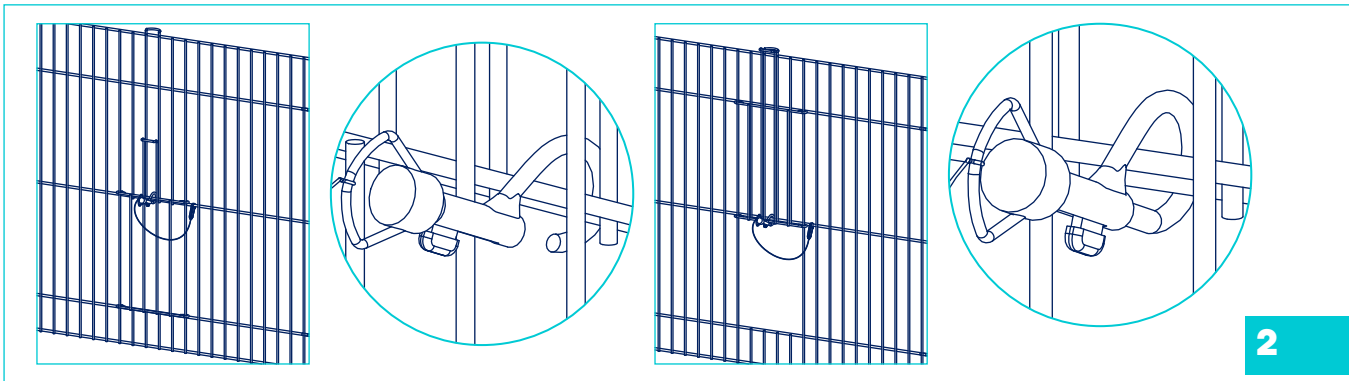


Part 2 - Operate Door Latch



To unlock doors, turn handle upwards and move outwards.



When accessing the smaller side doors, lift and slide the doors upwards. When not in use, lock the side doors by securing the bottom edge of side doors to the frame of cage with the attached clips.

Removing the Cage

You can disassemble the cage according to the reverse operation on Part 1.

Warning & Cautions

We care about the safety of your pet, so please READ AND FOLLOW ALL INSTRUCTIONS before using a new crate. Improper use may result in serious injury or even the death of your pet.

For small pet use only. NOT FOR USE BY CHILDREN.

Be sure to choose the correct sizing for your pet based on wire spacing, size and pet type.

Give the cage a look over periodically and do not use if you see any excessive wear or damage.

Remove your pet's collar or any pet accessory before putting them in the cage.

Not recommended for large animals such as dogs, cats and other larger pets.

Assemble according to the directions and do not leave your pet in the cage for an extended period without supervision. Take some time to get your pet used to their crate. It will go a long way to keeping them happy and comfy inside.

While we are dedicated to providing the best for your pet, Chewy, Inc. is not responsible for any loss, damage, discomfort, injury, illness, death or costs of any kind as a result of or by use of this house.

Care & Maintenance

Wipe clean with a damp soft cloth and mild soap. Dry thoroughly. Do not use abrasive cleaners as it may damage the wire coating.

Questions

Questions? Call our friendly customer service anytime. We're here 24/7 at 1.800.672.4399



frisco[®]
by chewy



Frisco Portable Outdoor Small Pet Cage (with Cover) Instruction Manual

Sku# 555318

FOR PET USE ONLY.

Assembly Instructions

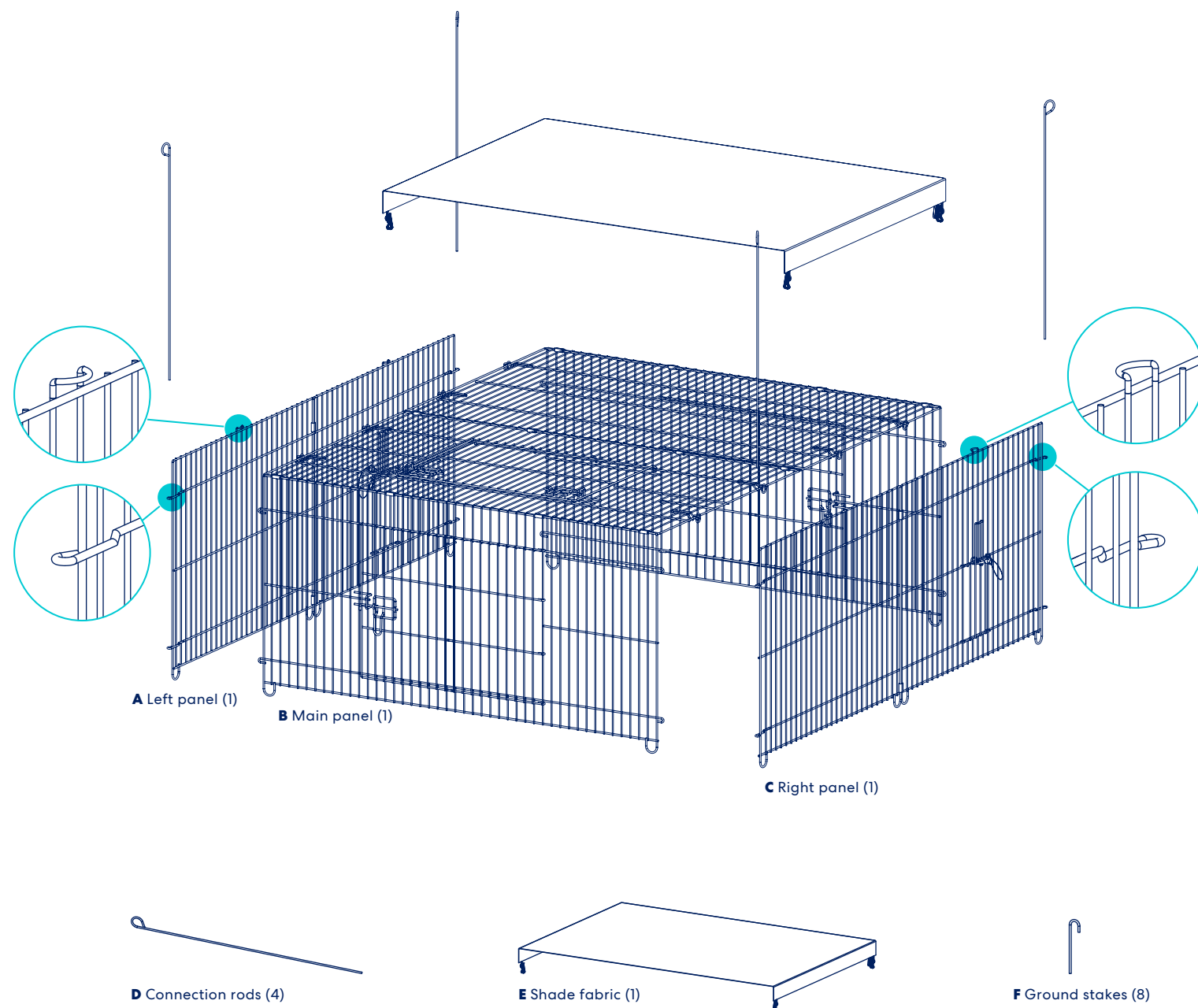
Please Read Through All Instructions Before Starting

Read Before Assembly

Although this cage can be assembled by one person, we recommend enlisting a friend for easier assembly. Save all packaging until assembly is completed.

Parts Included

Prior to assembly, please be sure to identify and sort all parts shown below.

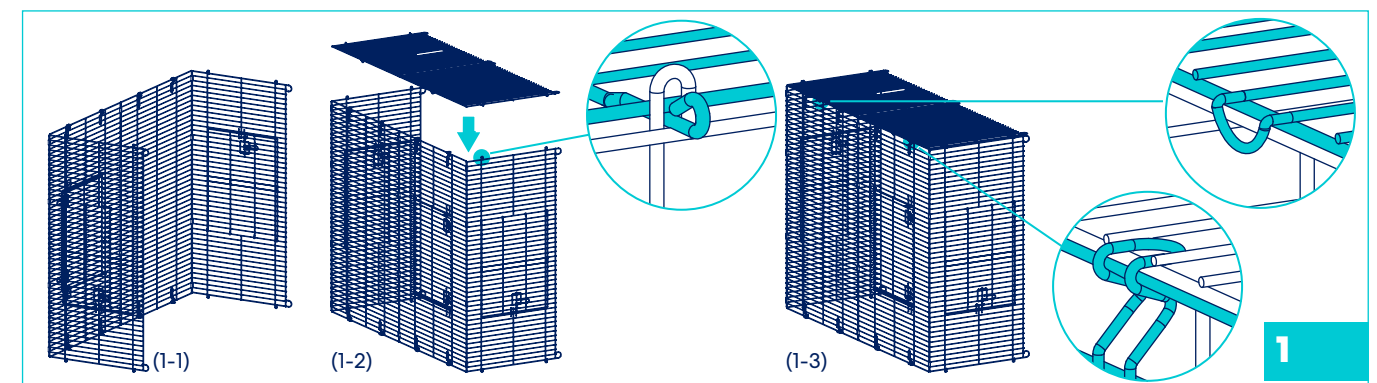


Call 1.800.672.4399 for questions

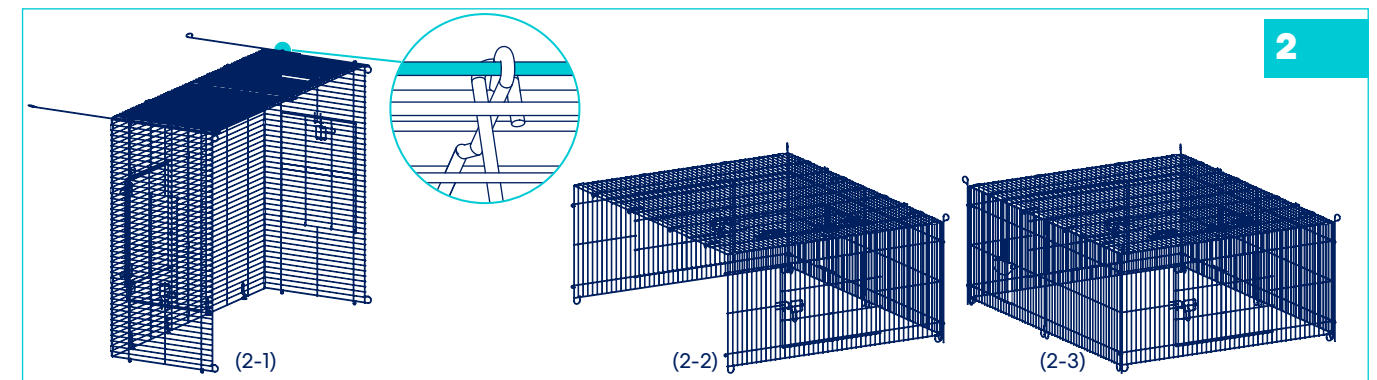
Assembly Instructions

Please Read Through All Instructions Before Starting

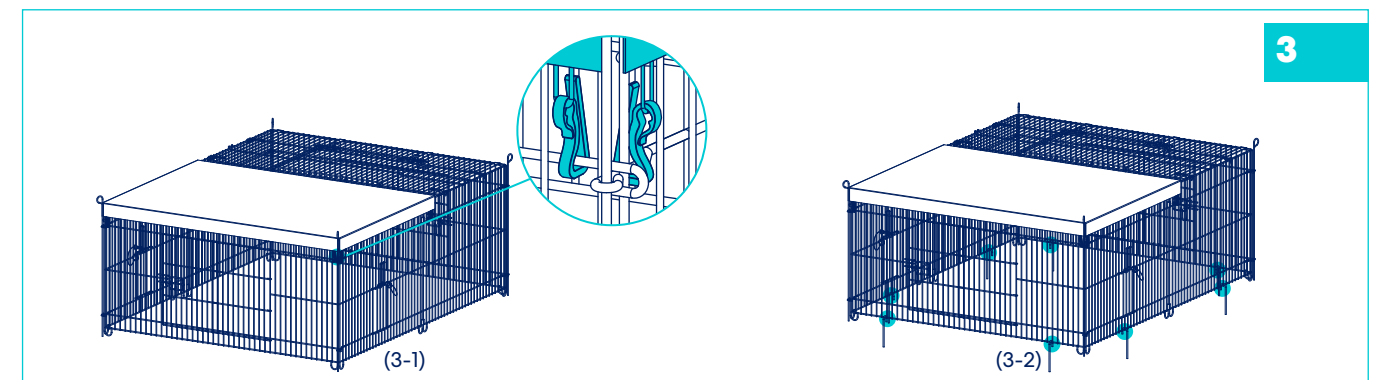
Part 1 - Installing the Cage



Unfold the main panel and stand it sideways (image 1-1), then place right panel in place while inserting the 4 connection loops of right panel into the connection loops of the main panel (image 1-2). Be sure that the hooks of main panel and side panel lock onto each other, while alternating every other hook (image 1-3).



After assembling the right panel, insert a connection rod through the corner connection loops (image 2-1), then turn the cage down horizontally (image 2-2). Assemble the left panel by repeating the same steps from assembling the right panel (image 2-3).



Place the shade fabric on to the top of cage and secure all clips to cage while making sure that the fabric is on the side of roof without the door (image 3-1). If using the cage outside, on a soft surface, like grass or soil, use the ground stakes for added security and stability for cage (image 3-2).

Call 1.800.672.4399 for questions