



Cozy Oasis Small Pet Habitat

Instruction Manual

Sku# 555334

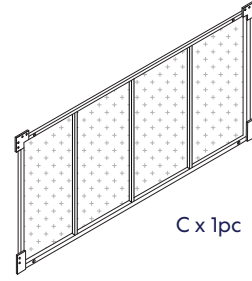
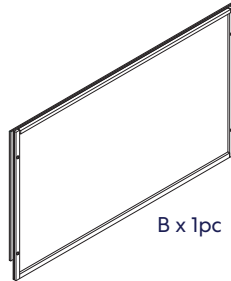
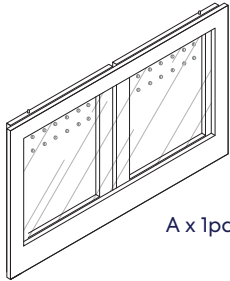
FOR PET USE ONLY

Assembly Instructions

Please Read Through All Instructions Before Starting

Prior to assembling your new pet habitat, we recommend following these instructions step by step.
Make sure all parts are ready before you start assembly.
Identify and locate each of the components listed below.

Parts Included



*NOTE: Two adults recommended for assembly.



Screws x 12pcs



Hand Screws x 4pcs



Casters x 4pcs



Wrench x 1pc



Seal Tape Roll

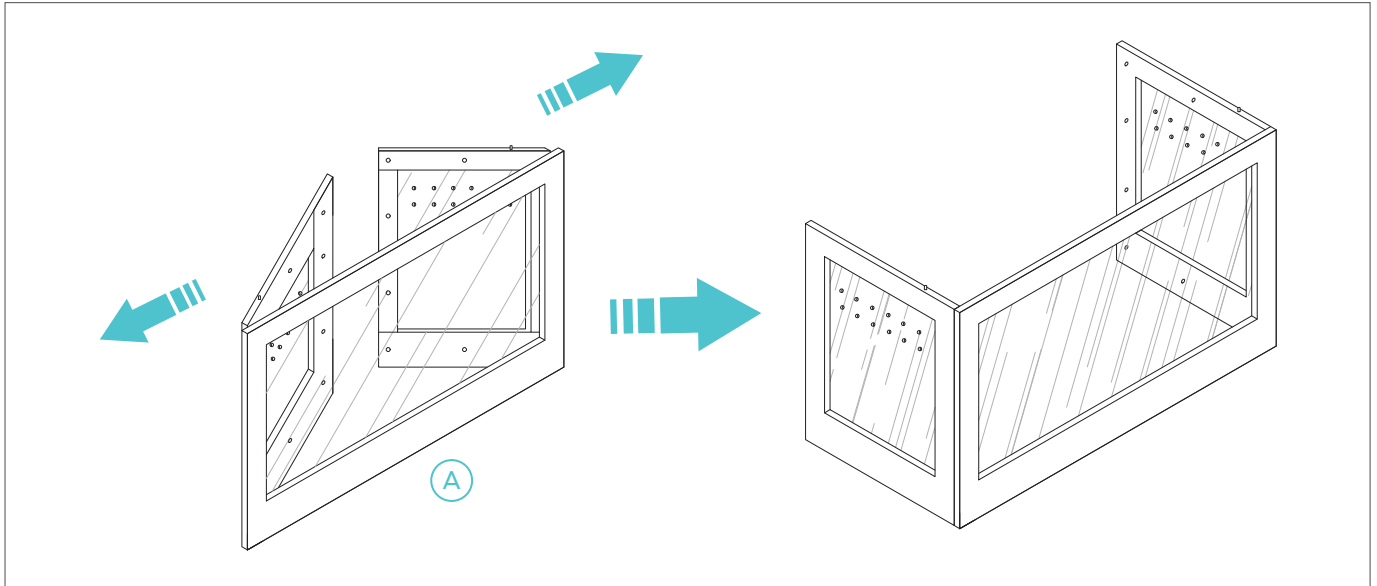
*NOTE: Phillips Screwdriver needed for assembly.

Assembly Instructions

Please Read Through All Instructions Before Starting

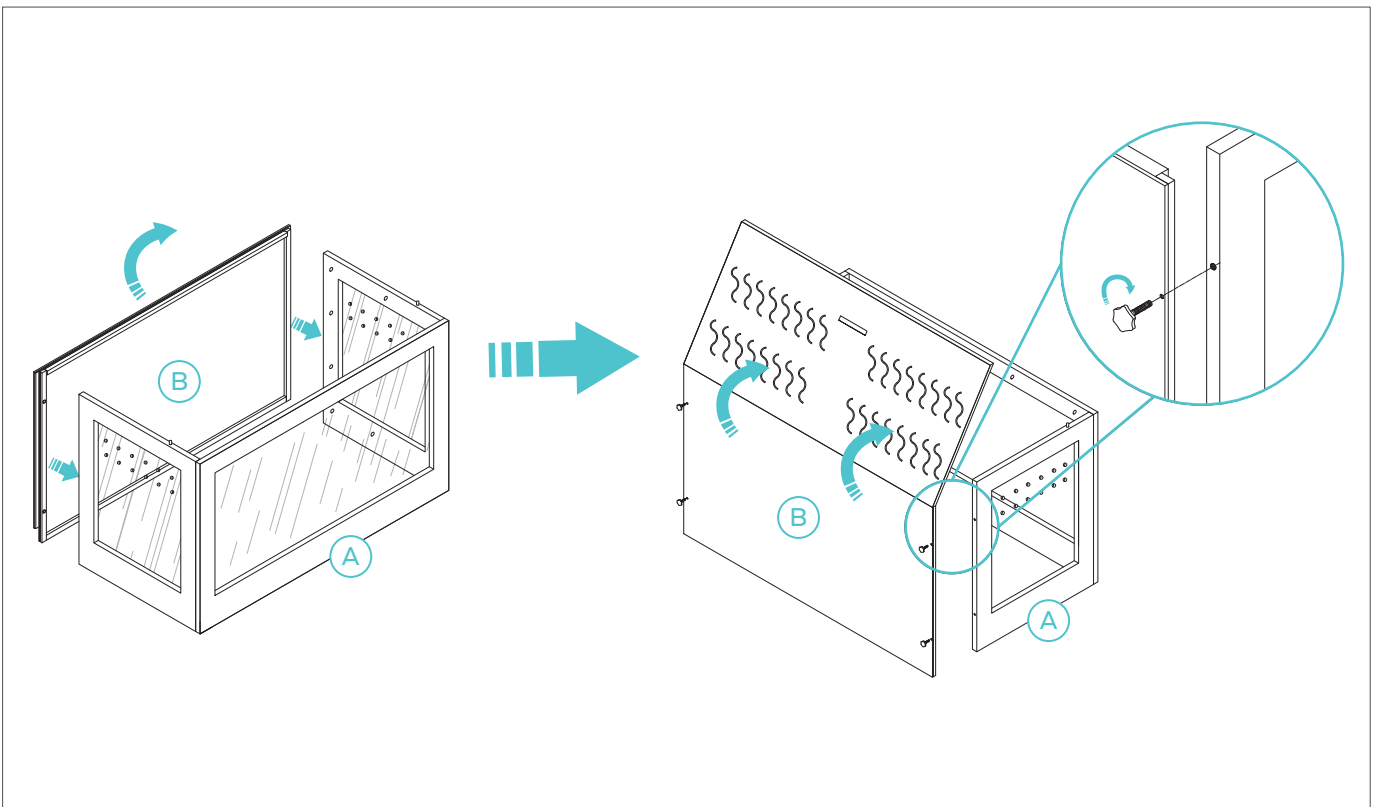
Step 1

Open Part (A) as shown below, while making sure the preinstalled wood pegs on the side panels are facing up.



Step 2

Take Part (B) and flip the top over to reveal the holes on the back panel. Then, use the 4 Hand Screws to attach Part (B) to Part (A).

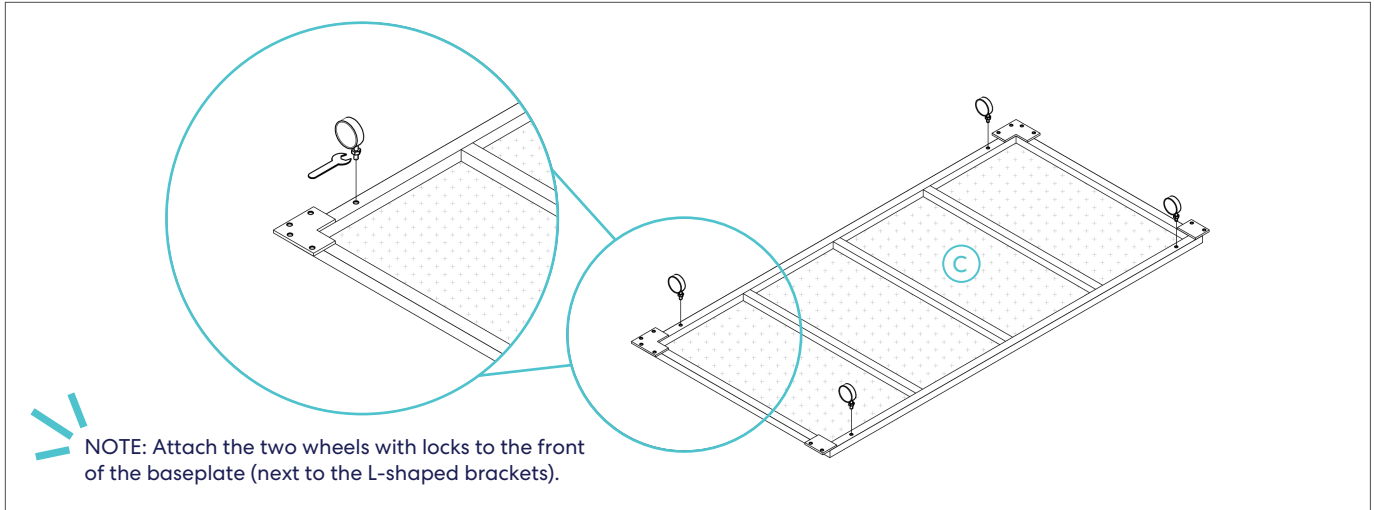


Assembly Instructions

Please Read Through All Instructions Before Starting

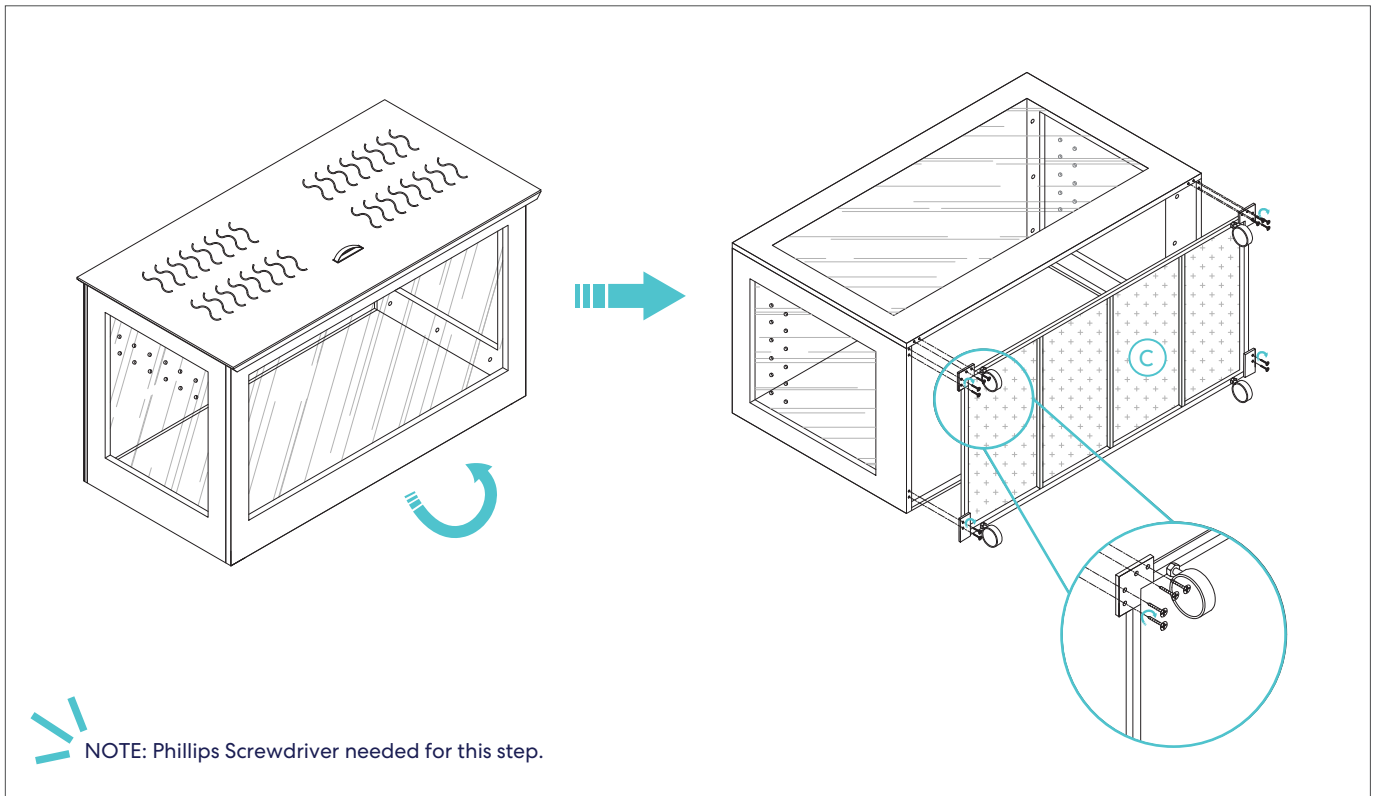
Step 3

On Part (C), use the Wrench to attach the Casters (4 pcs) into the holes on the baseplate.



Step 4

With the help of another person, flip the cage on its back so the bottom opening is facing you. Place Part (C) against the main frame and attach using the provided Screws.

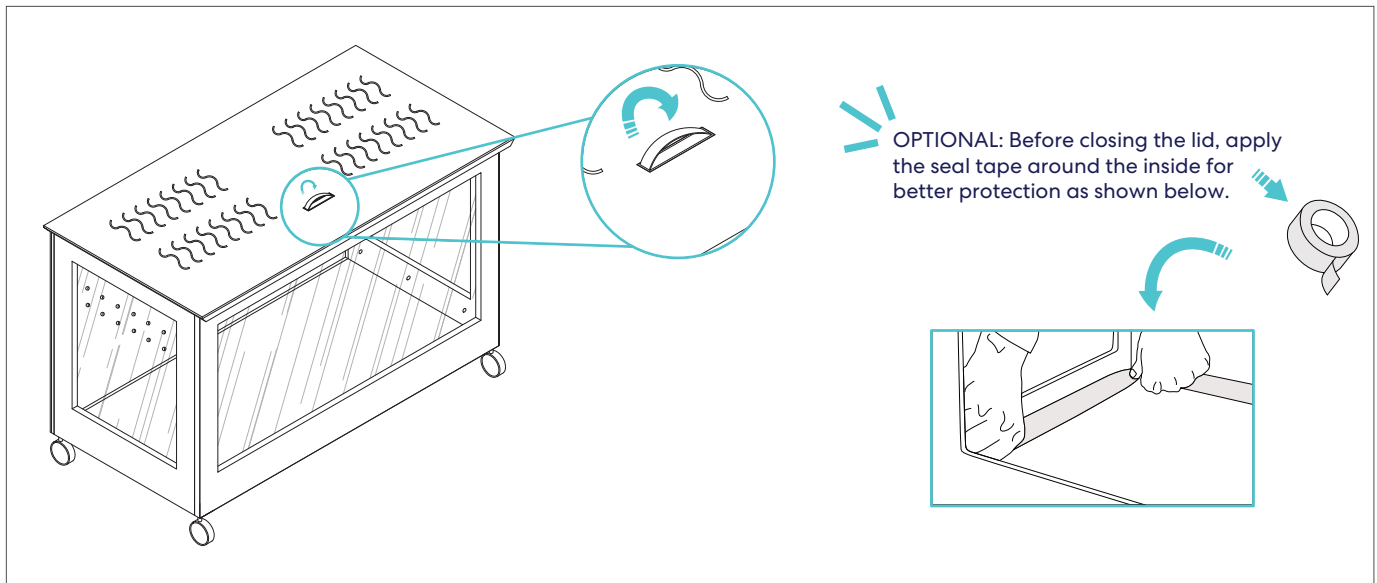


Assembly Instructions

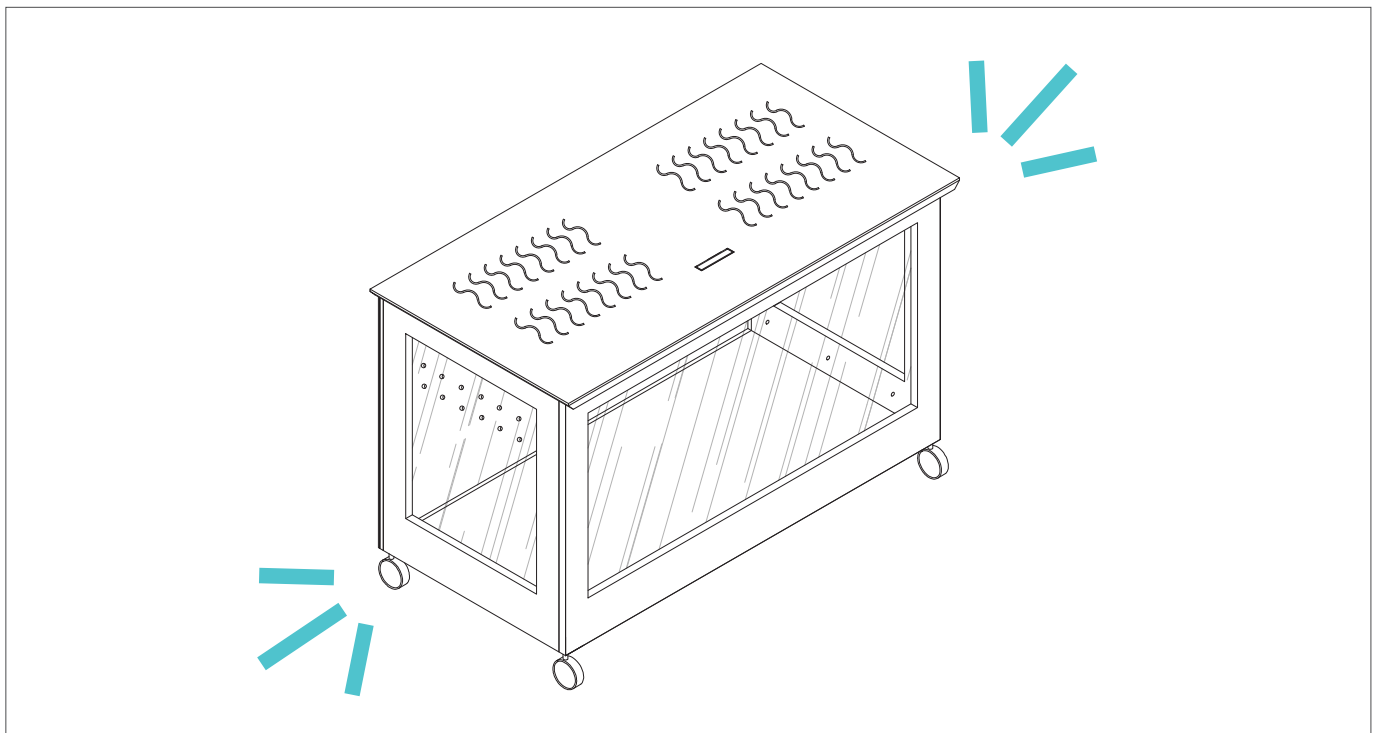
Please Read Through All Instructions Before Starting

Step 5

With the help of another person, flip the cage right side up. Align the lid to the pegs to lock into place, then rotate the handle so it creates a flat surface.



Assembly Complete



Warnings & Cautions

- For small pet use only. NOT FOR USE BY CHILDREN.
- Be sure to choose the correct sizing for your pet based on size and pet type.
- Inspect the product periodically and do not use if it becomes worn or damaged.
- Since many small pets can jump extremely high, always supervise your pet. Even if you think your small pet is incapable of escaping, it is a good idea to place the habitat in a room in the house that has been pet-proofed. Pet-proofing a home includes taking measures to ensure your small pet cannot chew or ingest electrical cords, toxic plants, carpets, furniture, or that he cannot squeeze into gaps behind furniture or appliances.
- Do not use as a barrier to stairs, heat sources, etc.
- Wipe clean with a damp soft cloth and mild soap. Dry thoroughly.
- Gradually transition your pet to accept the habitat.

Questions

Questions? Call our friendly customer service anytime.
We're here 24/7 at 1.800.672.4399