

frisco[®]
by **chewy**



Travel Bird Cage Instruction Manual

Sku# 574678

FOR PET USE ONLY.

Assembly Instructions

Please Read Through All Instructions Before Starting

Before Assembly

Read all instructions and confirm all parts are included before starting assembly.

Observe your pet's behavior with the product for suitability. Remove and replace the item if it becomes damaged.

Care instructions: Wipe with a damp cloth and mild, pet-safe cleaner. Allow to air dry. Do not expose to direct sunlight for extended periods of time.

To avoid misplacing hardware components, we recommend opening and placing hardware on the pan while assembling the bird cage.



Parts Included

Prior to assembly, please be sure to identify and sort all parts shown below.



01. Metal base×1
02. wire cage×1



03. Wooden perch×1



04. Metal food bowl×2



05. Metal food bowl bracket×2



06. Metal gasket×2



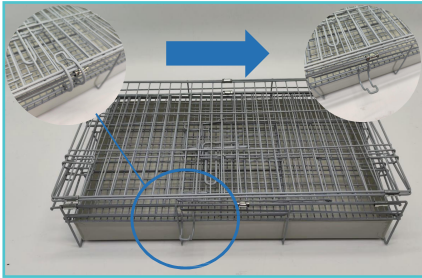
07. Screw nut×2

Assembly Instructions

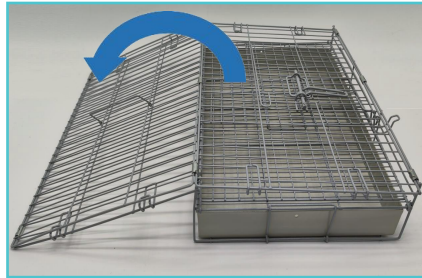
Please Read Through All Instructions Before Starting

Travel Bird Cage Instructions

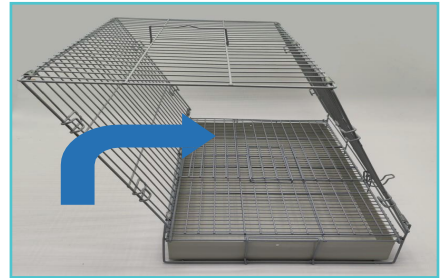
Step 1



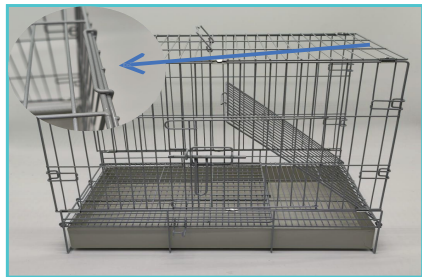
Step 2



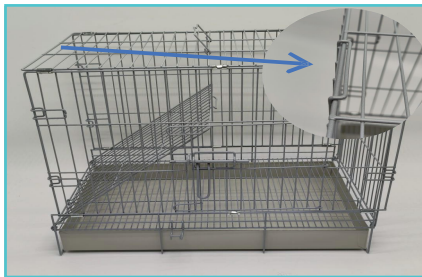
Step 3



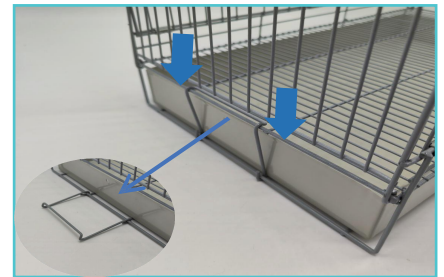
Step 4



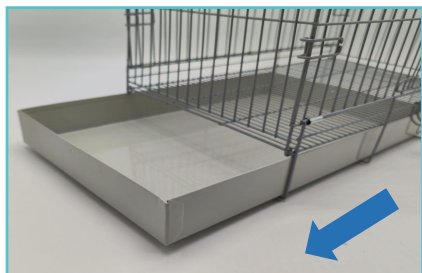
Step 5



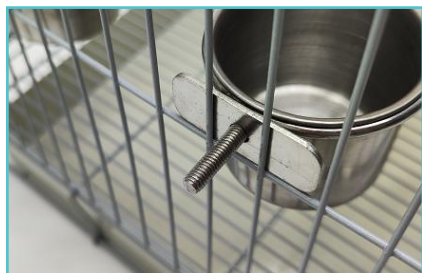
Step 6



Step 7



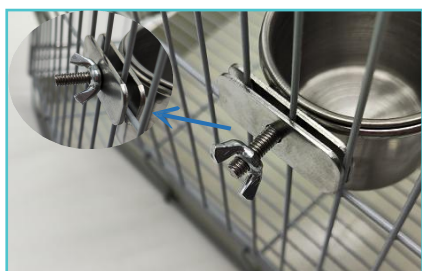
Step 8



Step 9



Step 10



Step 11



Step 12



Assembly Instructions

Please Read Through All Instructions Before Starting

Warning & Cautions

We care about the safety of your pet, so please READ AND FOLLOW ALL INSTRUCTIONS before using a new bird cage.

Improper use may result in serious injury or even the death of your pet.

For bird use only. NOT FOR USE BY CHILDREN.

Be sure to choose the proper design for your bird based on vertical and horizontal bars, wire spacing and pet type.

Give the bird cage a look over periodically and do not use if you see any excessive wear or damage.

Do not sit on, climb or shake the product.

While we are dedicated to providing the best for your pet, Chewy, Inc. is not responsible for any loss, damage, discomfort, injury, illness, death or costs of any kind as a result of or by use of this cage.

Never place your bird cage in direct sunlight or store your bird cage outside or in a car, because the metal can become very hot.

Assemble according to the directions.

Take some time to get your pet used to their cage. It will go a long way to keeping them happy and comfy inside.

Care & Maintenance

Always check the bird cage and discontinue use if any parts are missing, worn or damaged. Check regularly to make sure all hardware and mountings are tightened securely. Wash with mild detergent. Don't use any abrasive cleaners or bleach.

Questions

Questions? Call our friendly customer service anytime. We're here 24/7 at 1.800.672.4399