

Assembly Instructions for Model Number 550-24DR, 552-30DR, 554-36DR, 556-42DR, 558-48DR

IMPORTANT INFORMATION

Remove collars, tags, and leads from pet before placing it in the home to prevent possible entanglement. DO NOT leave young animals unsupervised for extended periods of time. MidWest's main concern is your pet's well-being. If your pet has never been kept in any enclosure, specific training may be necessary for your pet's safety. A pet, not specifically trained to be restricted, may attempt to escape from this enclosure, which could cause serious injury to your pet or this product. MidWest will not accept liability or warrant any loss to improper use of this product by a pet that has not been properly trained.

Unwrap and remove all parts from the box. Keep the box and packing material until the product is assembled. In case of return or exchange, failure to return product in similar condition as received could result in limited reimbursement. Please save sales receipt as proof of purchase for warranty purposes. Check to ensure you have all the parts below. If you discover any parts are missing, immediately call our toll-free service helpline at 1-800-428-8560 (Monday - Friday 9 a.m. to 4 p.m. EST) or at info@midwesthomes4pets.com.

PARTS IDENTIFICATION

A. (1) Exercise Pen
(8 connected panels)

B. (8)- Ground Anchors



C. (8) Corner Stabilizers

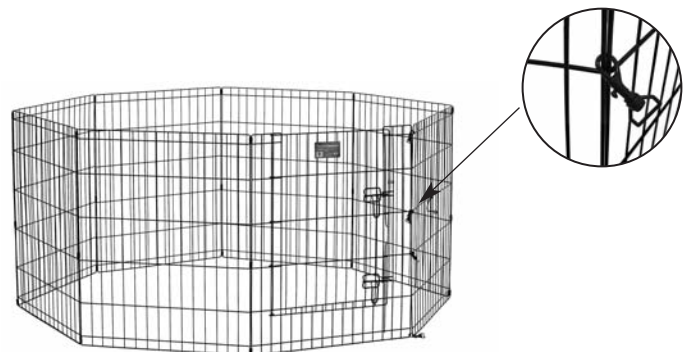
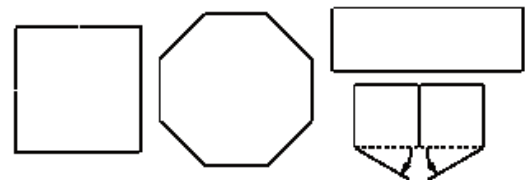


D. (4) Snaps

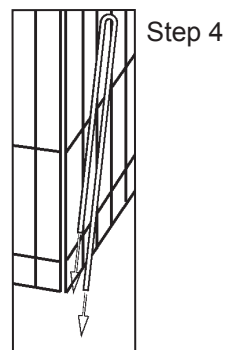


ASSEMBLY INSTRUCTIONS

1. Remove contents of the packing carton. Locate the Exercise Pen (8 connected panels), the Ground Anchors & Snaps.
2. The Exercise Pen can be set up in many different configurations. Decide what configuration you'd like to use and set up the pen. (Note: The pen can be moved and reconfigured after it has been assembled.)
3. Connect the two ends with the Snaps as shown in picture. For best results, place Snaps at top and bottom between the two closely spaced wires, and space the remaining two Snaps evenly along the middle wires.



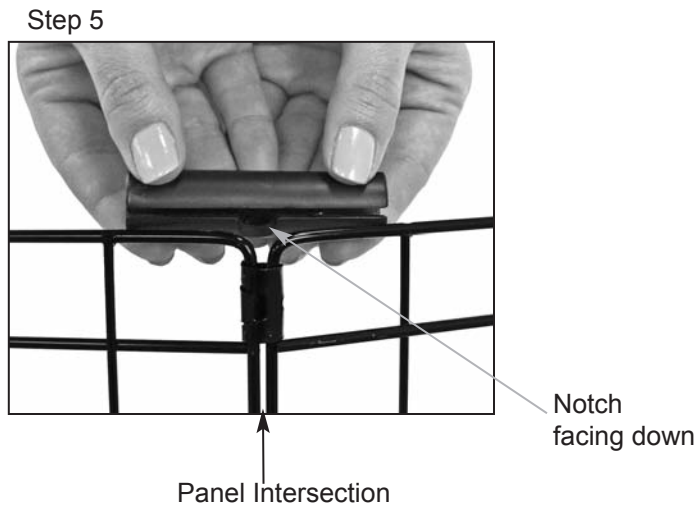
4. For added safety, install a Ground Anchor at the intersection of each panel. (Note: Snaps and other details have been eliminated to more clearly illustrate the Ground Anchor.)



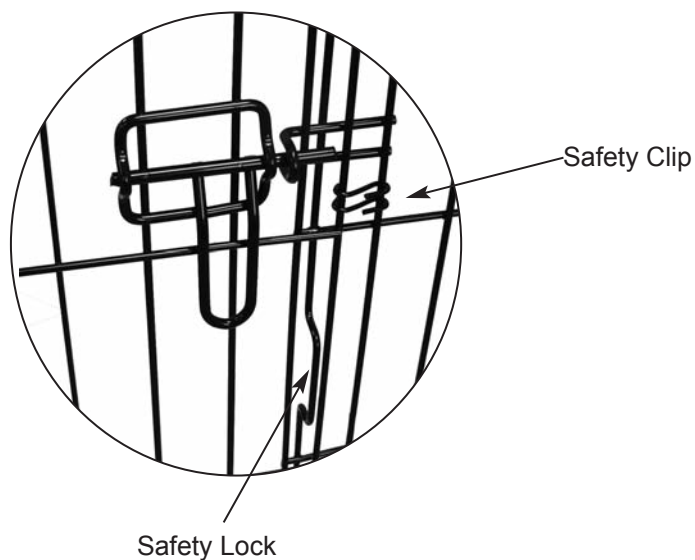
5. The Corner Stabilizers can be used as floor protectors (in any configuration) and/or to keep the assembled Exercise Pen in the octagonal configuration. If the animal jumps up on the side, the Stabilizers will help prevent the opposite end from collapsing behind, injuring the animal or possibly allowing the pen to tip over.

Stabilizers attach at intersection of two panels. Roll Stabilizer on top of panels with notch facing down. The slit in the middle of Stabilizer will cover wires. Roll Stabilizer over wires to secure in place.

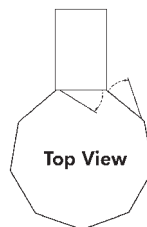
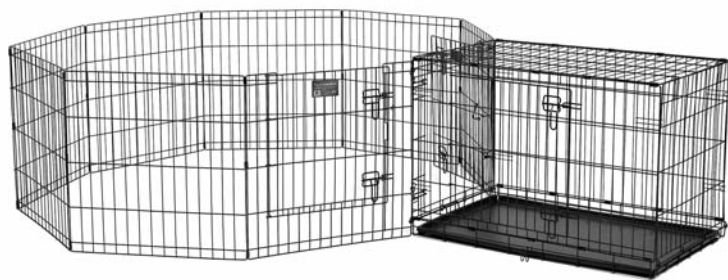
For maximum stability, place all 8 Stabilizers on the top of the pen. For a mix of stability and floor protection, place every other Stabilizer on bottom of pen. For floor protection only, place all 8 Stabilizers on the bottom.



6. Secure pet inside Exercise Pen by closing the door and securing both slide-bolt latches. Be sure the door closes over the safety lock and both latches are properly secured. For added security, fasten the safety clip.



NOTE: This Exercise Pen can be connected to a standard MidWest crate. Be sure the crate is assembled according to the printed instructions. Connect the two ends of the pen to the crate as shown using the four included Snaps.



TOLL-FREE SERVICE HELPLINE: If you have any problems or questions with the assembly of your new Exercise Pen with Step Thru Door, call our Service Helpline at: 1-800-428-8560 between 9:00 a.m. and 4:00 p.m. (EST) Monday through Friday.

LIMITED MANUFACTURERS WARRANTY

1. For one (1) year from the date of original purchase, MIDWEST Homes For Pets ("MIDWEST") warrants to the purchaser of this pet furniture that, should it prove defective by reason of improper workmanship and/or material, MIDWEST will repair or replace, at its option, any defective part of the pet furniture, without charge for the part or for shipping. Replacement parts are warranted for the remainder of the original period.
2. **THIS WARRANTY DOES NOT COVER** defects in the furniture caused by any animal, any physical abuse to or misuse of the pet furniture, any damage caused by the original purchaser or any third party, or any defects arising or discovered more than one (1) year from the original retail purchase date.
3. **STEPS TO OBTAIN WARRANTY SERVICE:**
 - A. The purchaser must call MIDWEST's HELPLINE, 800-428-8560, to report the alleged defect to a customer service representative or obtain missing parts.
 - B. The customer service representative will determine if the defect is covered by this warranty, and if it is, will authorize and instruct the purchaser in how to obtain corrective action.
 - C. MIDWEST may require the purchaser to present the sales receipt or other proof of purchase prior to authorizing any return or replacement. No returns or replacements will be permitted without proper authorization. If a return or replacement is authorized, you may be requested to return the item to MIDWEST or to make the item available for pick-up by MIDWEST.
4. **ANY EXPRESS WARRANTY NOT PROVIDED IN THIS WARRANTY DOCUMENT, AND ANY REMEDY FOR BREACH OF CONTRACT THAT, BUT FOR THIS PROVISION, MIGHT ARISE BY IMPLICATION OR OPERATION OF LAW, IS HEREBY EXCLUDED AND DISCLAIMED. THE IMPLIED WARRANTIES OF MERCHANTABILITY AND OF FITNESS FOR ANY PARTICULAR PURPOSE ARE EXPRESSLY LIMITED TO A TERM OF ONE (1) YEAR. SOME STATES DO NOT ALLOW LIMITATIONS ON HOW LONG AN IMPLIED WARRANTY LASTS, SO THE ABOVE LIMITATIONS MAY NOT APPLY TO YOU.**
5. **UNDER NO CIRCUMSTANCES SHALL MIDWEST BE LIABLE TO PURCHASER OR ANY OTHER PERSON OR ANY SPECIAL, INCIDENTAL OR CONSEQUENTIAL DAMAGES, WHETHER ARISING OUT OF BREACH OF WARRANTY, BREACH OF CONTRACT OR OTHERWISE, SOME STATES DO NOT ALLOW THE EXCLUSION OR LIMITATIONS OF INCIDENTAL OR CONSEQUENTIAL DAMAGES, SO THE ABOVE LIMITATIONS OR EXCLUSION MAY NOT APPLY TO YOU.**
6. This warranty gives you specific legal rights, and you may also have other rights which vary from state to state.



ExPen_DR (123)