



www.petlibro.com



Model: PLAF103

# USER MANUAL

## PETLIBRO

Granary Automatic Pet Feeder-WiFi Control 5L

**Model:** PLAF103

©Libro Corp. All Rights Reserved.

**Manufacturer:** Shenzhen Libro Technology Co., Ltd.

**Address:** 12/F, Tower B, GALAXY WORLD, Yabao Road,  
Longgang District, Shenzhen, China

Made in China

PLAF103\_V2.0

CAN ICES-3 (B)/NMB-3(B)

FCC ID: 2A3DE-PLAF103



This device complies with Part 15 of the FCC Rules. Operation is subject to the following two conditions: (1) this device may not cause harmful interference, and (2) this device must accept any interference received, including interference that may cause undesired operation.

Granary Automatic  
Pet Feeder-WiFi Control 5L

Read this manual before using the product, and keep it for future reference.

This product is intended for household use only.

# CONTENTS

---

SAFETY GUIDELINES	01
WARRANTY	04
IN THE BOX	05
PRODUCT OVERVIEW	06
BUTTONS AND INDICATORS OVERVIEW	08
SET UP THE FEEDER	10
CONTROLLING VIA APP	15
CLEAN AND CARE	23
TROUBLESHOOTING	29
SPECIFICATIONS	30

## SAFETY GUIDELINES

### ! WARNING

- Dispose of all packaging materials properly. Some items may be packed in plastic bags; these bags could cause suffocation; keep away from children and pets.
- Do NOT allow small children to play with, in or around the pet feeder.
- To reduce the risk of injury, please keep close supervision when the appliance is used near children.
- Do NOT use the feeder with pets not able to reach the food tray or with any physical disability.
- Do NOT immerse the base part in water at any time as it may damage electronic components like the control panel.
- Do NOT place any foreign object in the pet feeder.
- Do NOT use outdoors. Check operation frequently to be sure the unit is dispensing properly.
- Do NOT use wet, canned or moist food.
- Do NOT disassemble the unit other than as instructed in this User Guide.
- Do NOT use the feeder for anything other than its intended use.
- Only use attachments recommended or sold by the manufacturer. The use of attachments not recommended or sold by the manufacturer may cause an unsafe condition. Do not modify the pet feeder.
- Do not operate any appliance if the unit is malfunctioning or has been damaged. Do not attempt repairs on the pet feeder yourself. Contact our customer service immediately for further instructions.
- Always unplug when not in use and before cleaning.
- Never pull on the electrical power cord to remove the plug from the wall outlet.

- If the plug of this device gets wet, turn off electricity to that wall outlet. Do not attempt to unplug.
- Examine the feeder after installation. Do not plug in if there is water on the power cord or plug.
- To avoid tripping, always position power cord out of the way of foot traffic.

### CAUTION

- Do NOT install or store the pet feeder where it will be exposed to weather or temperatures below 4°C / 39.2°F.
- Use alkaline D batteries to power. Do NOT use rechargeable batteries.
- Check the batteries regularly. Before leaving for extended time, always replace batteries with new ones.
- Do NOT lift the pet feeder by lid, food tank, or food tray. Lift and carry it using both hands and the base, while keeping the unit in an upright position.
- Suitable for dry food ONLY, with kibble size ranging from 2-15mm / 0.07-0.6 inch in diameter. Larger kibble may get stuck at the food outlet.
- Do not put your fingers into the food outlet or let your fingers touch the rotor.
- Read and observe all important notices listed on the pet feeder and in the packaging.

This device complies with Part 15 of the FCC Rules. Operation is subject to the following two conditions:

- (1) this device may not cause harmful interference, and
- (2) this device must accept any interference received, including interference that may cause undesired operation.

Changes or modifications to this unit not expressly approved by the party responsible for compliance could void the user's authority to operate the equipment.

#### NOTE:

This equipment has been tested and found to comply with the limits for a Class B digital device, pursuant to Part 15 of the FCC Rules. These limits are designed to provide reasonable protection against harmful interference in a residential installation. This equipment generates, uses and can radiate radio frequency energy and, if not installed and used in accordance with the instructions, may cause harmful interference to radio communications. However, there is no guarantee that interference will not occur in a particular installation. If this equipment does cause harmful interference to radio or television reception, which can be determined by turning the equipment off and on, the user is encouraged to try to correct the interference by one or more of the following measures:

- Reorient or relocate the receiving antenna.
- Increase the separation between the equipment and receiver.
- Connect the equipment into an outlet on a circuit different from that to which the receiver is connected.
- Consult the dealer or an experienced radio/TV technician for help.

This device and its antenna(s) must not be co-located or operation in conjunction with any other antenna or transmitter.

#### Radiation Exposure Statement

To maintain compliance with FCC's RF Exposure guidelines, This equipment should be installed and operated with minimum distance of 20cm from your body.

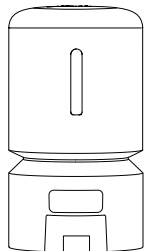
#### WARRANTY

- 1-year warranty
- Lifetime support

For guidance on product use and warranty extension, please contact our brand after-sales staff via email: **support@petlibro.com**

If any questions related to orders, please contact the seller through the shopping platform.

## IN THE BOX



Automatic Pet Feeder

X1



Food Bowl with Holder

X1



Power Adapter

X1



User Guide Kit

X1

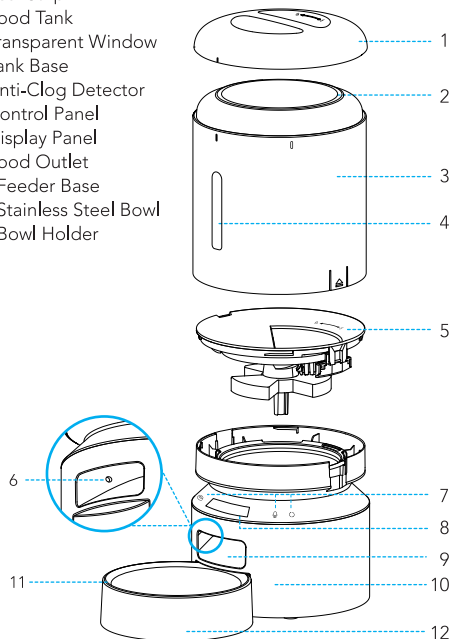


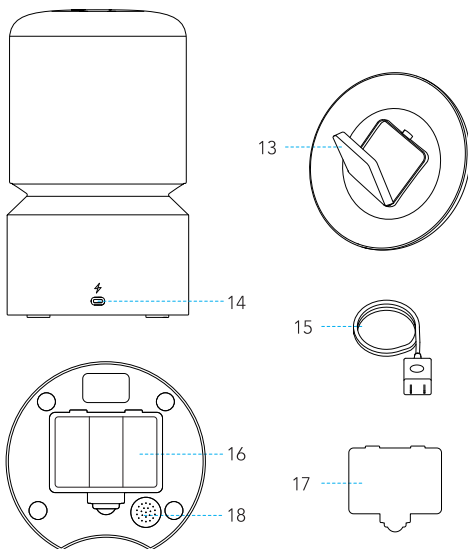
Desiccant Bag

X1

## PRODUCT OVERVIEW

1. Lid
2. Seal Strip
3. Food Tank
4. Transparent Window
5. Tank Base
6. Anti-Clog Detector
7. Control Panel
8. Display Panel
9. Food Outlet
10. Feeder Base
11. Stainless Steel Bowl
12. Bowl Holder





- 13. Desiccant Box
- 14. Power Jack
- 15. Power Adapter

- 16. Battery Compartment
- 17. Compartment Lid
- 18. Speaker

## BUTTONS AND INDICATORS OVERVIEW

### Buttons Overview



#### Unlock Button

To unlock the control panel, press and hold the button for 5 seconds, the device emits a Di, DiDi sound. In the locked state, only this button takes effect.



#### Record Button

In the unlocked state, press and hold the button, start recording after a beep is heard.

Record your message (Max:10 seconds). Release the button if you finish recording, two beeps will be heard indicating it's saved.



#### Manual Feeding Button

In the unlocked state, press once to dispense 1 portion of food.



#### Reset Button

In the unlocked state, keep holding the reset button until the feeder emits beeps: Di, DiDi, the Wi-Fi indicator keeps flashing, it indicates the device is ready for re-connection.

## Indicators Overview



### Food Level Indicator

Light up red if the food level is low.  
Off if the tank has enough food.

### Lock Indicator

On if the control panel is locked.  
Off if the control panel is unlocked.

**Note: The control buttons will be locked automatically after 30 seconds of standby.**

### Wifi Indicator

Flash every one second	The feeder is ready to connect to WiFi.
Flash several times per second	The feeder is connecting to WiFi or upgrading the software.
Double flash	WiFi password error.
Stay solid	Connected to WiFi.
Off	WiFi function is off.

### Work Status Indicator

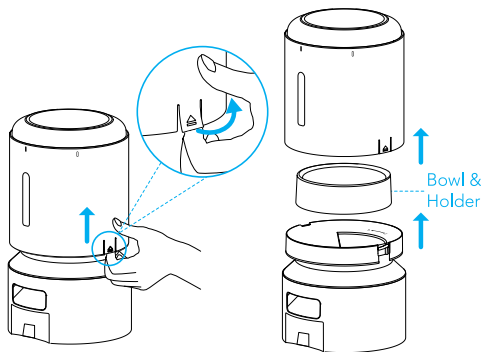
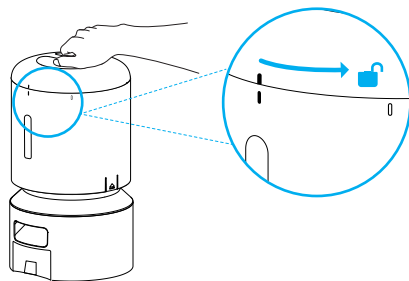
On	Food blockage or the motor can't work.
Off	Everything is working well.

## SET UP THE FEEDER

### Assembly and Prepare for Setting

1. Take out the food bowl inside the food tank.

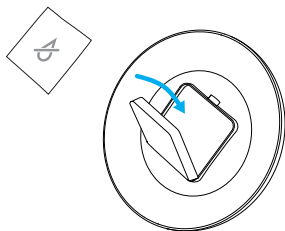
Twist the lid anticlockwise to remove the lid. Pull the notches on both sides outward a little and then up to remove the food tank.



2. Place the desiccant bag into the inner box under the lid.

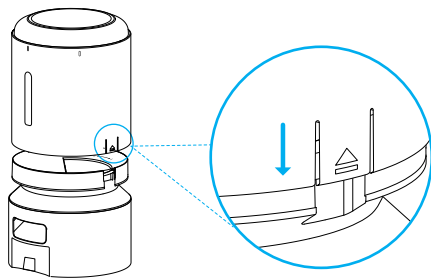
**Notes:**

- It is recommended to change the desiccant bag every 15 days to prevent mold growth.
- Remove the desiccant bag before cleaning the lid.



3. Install the food tank.

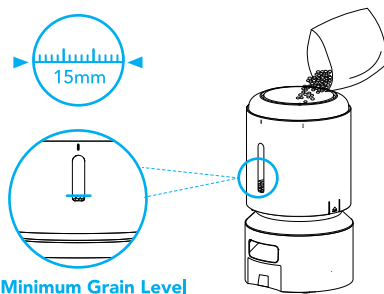
Align the food tank with the notches on both sides of the tank base.



4. Add dry pet food to the food tank.

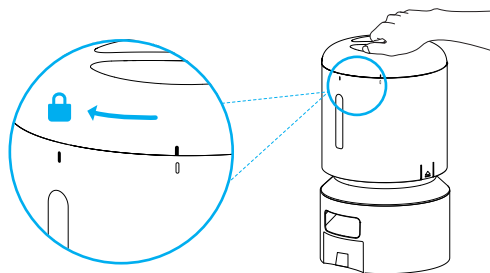
**Notes:**

- To prevent uneven food dispensing, please add enough pet food to the visible level.
- Recommended kibble size: 2-15mm/0.07-0.6 inch in diameter.
- Do not use canned, wet, or moist food.



5. Put the lid back on.

To snap into place, turn the lid clockwise from the right rotating sign to the left rotating sign.

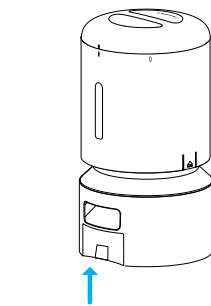




## 6. Install the Food Bowl

Attach the bowl to the designated notches underneath the feeder base.

**Note: Before moving the feeder, press the bowl down to remove it from the feeder base. If there is grain in the food bowl, handle it gently to avoid spilling. Hold the base instead of any other parts when lifting the feeder.**



## 7. Connect Power

- 1) Plug the 5V power adapter into a power socket and the USB cable into the USB port on the back of the feeder.
- 2) The LED display will light up automatically to indicate the feeder is on.
- 3) Open the battery compartment at the bottom of the feeder. Install three alkaline D batteries (not included) in case of a power outage. Make sure the batteries match the positive and negative poles with the markings in the compartment.

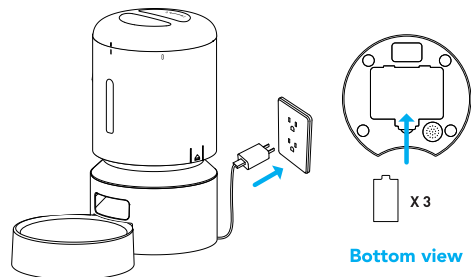
### Notes:

- Batteries are not included.

To avoid sudden power outage and the feeding of your pet is affected, do not use the batteries as the only source to power the feeder, the batteries can only be used as an emergency plan.

- To avoid battery leakage, remove the batteries if the device won't be in use for a period of time.

- When feeder is powered only by batteries, the WiFi function, record button and reset button would be disabled to extend the working time(it depends on versions), the meal schedules will be carried out normally.





## CONTROLLING VIA APP

**\*Note: The feeder supports 2.4GHz and 5GHz WiFi. Keep the feeder close to your router for better WiFi connection. The ideal range is within 6 meters/19.7 feet without obstacles and walls. It is recommended to use 2.4GHz WiFi connection when the distance is far or there are obstacles and walls.**

### System Requirements

iPhone on iOS 10.0 or later; smartphone on Android 5.0 or later

### Install the APP & Log in

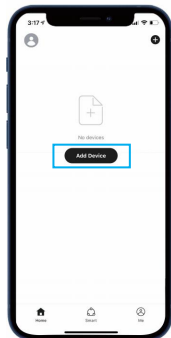
1. Scan the QR code on the right or search "PETLIBRO LITE" in App Store  or Google Play  to download the App.
2. Sign up and log into your account.



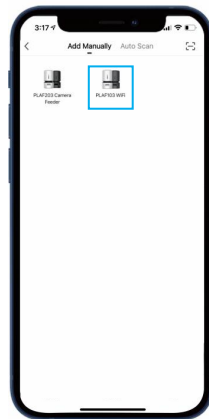
### Add the Device

#### A. Add the Feeder Via Bluetooth Mode

- 1) Open the App, select Home page, tap "Add Device" or "+" in the upper right corner.



- 2) Choose PLAF103 WiFi Feeder.

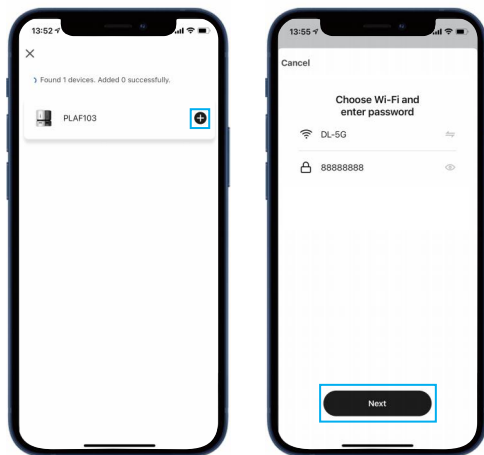


- 3) Follow the instructions on the screen, and **confirm the WiFi indicator on the feeder is flashing.**

(Note: If the WiFi indicator on the feeder is not flashing, hold the Unlock Button for 5s to unlock, the lock indicator goes out. Keep holding the reset button until the WiFi indicator keeps flashing.)



4) Add the device PLAF103 by entering WiFi account and password.



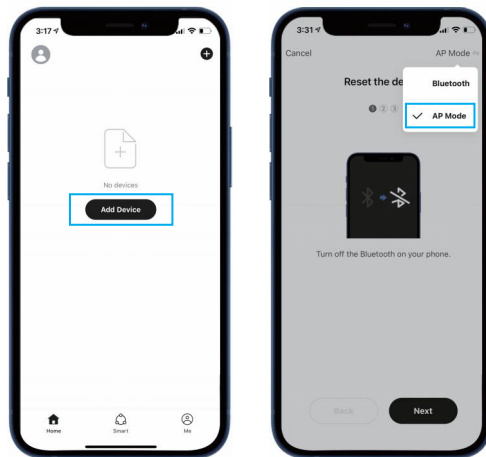
5) Feeder connected, start to set the feeding time and portions, record meal call, and set the times the meal call play.

## B. Add the Feeder in AP Mode

1) Turn off the Bluetooth on your phone



2) Open the App, tap "Add Device" or "+" in the upper right corner, choose PLAF103 WiFi Feeder, tap the icon at the top right corner and choose AP mode.



3) Confirm the WiFi indicator on the feeder is flashing.

**(Note: If the WiFi indicator on the feeder is not flashing, hold the Unlock Button for 5s to unlock, the lock indicator goes out. Keep holding the reset button until the WiFi indicator keeps flashing.)**

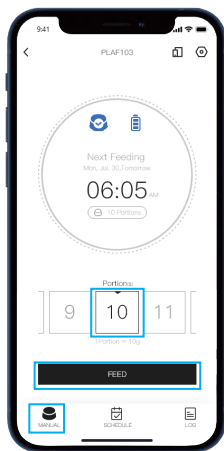
4) Enter your WiFi account and password, and go to the WiFi connection interface on your phone, find the device "SL-PETLIBRO-xxxx" and tap to connect.

5) Back to the App and wait for connecting.

6) Feeder connected, start to set the meal time and portion size, record meal call, and set the times the meal call play.

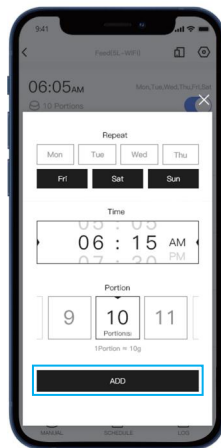
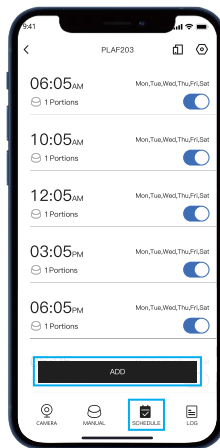
### Manually Feeding the Pet

On **Manual** page, choose the **portion** you want to feed first, then tap the **Feed** icon. The feeder will feed immediately.



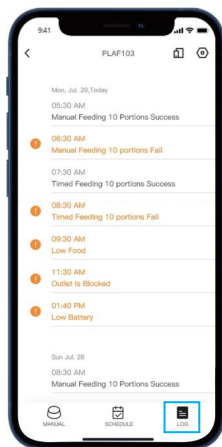
### Set Meal Plan

On **Schedule** page, tap the **Add** icon, choose **feeding time**, **feeding days**, and **feeding portions**.




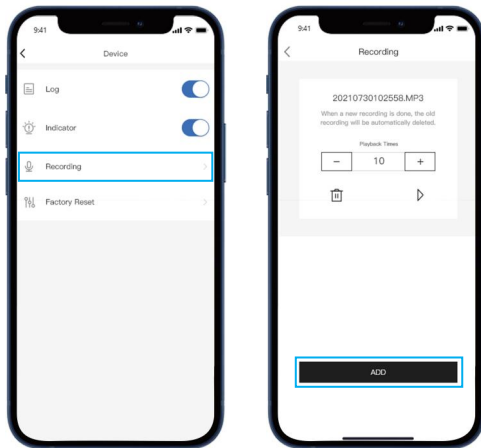
## View the Logs

On Log page, you can view the feeding records and abnormal notifications.



## Record a Meal Call & Set Playback Times

Tap  icon in the upper right corner → **Recording**, then tap the **Add** icon, follow the instructions on the screen to record a meal call, set the times the meal call play.



**Note: The device can only keep the latest recording. When a new recording is done, the old recording will be automatically deleted.**

## Reset the Feeder on App

Tap  icon in the top right corner → **Factory Reset**, the feeder emits beeps: Di, DiDi, the WiFi indicator keeps flashing, it indicates the device is ready for re-connection.

## Share the Device


Tap  icon in the top right corner → **Share Device** → **Add Sharing**.

If you want to add the feeder to another person's mobile phone, download the App and register a new account on his/her phone first, then you can share the device with the new account. Make sure the two accounts are registered in the same country.

## Remove Device

Tap  icon in the top right corner → **Remove Device** → **Disconnect**.

## Check FAQs and Send Feedback

Tap  icon in the top right corner → **FAQ&Feedback**. Check the frequently asked questions related to the device, and you can also submit questions and feedback to us.

## CLEAN AND CARE

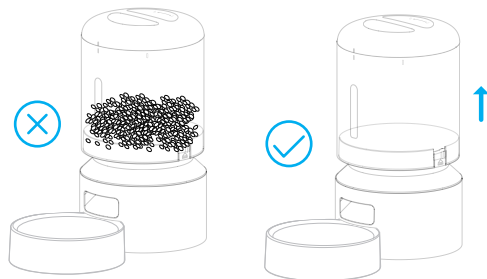
It's recommended to clean the feeder regularly for the health of pets.

The washable parts are as follows: lid, food tank, tank base, stainless steel bowl, and bowl holder.

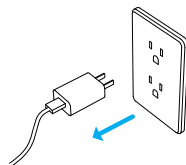
Clean other parts with a dry cloth.

## Clean the tank lid, food tank, tank base

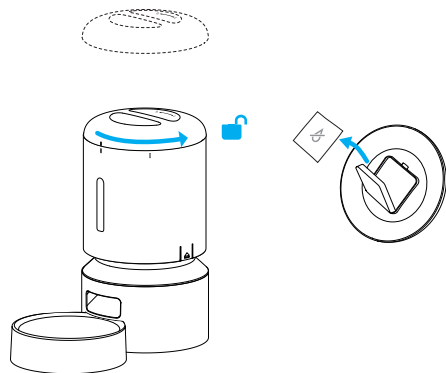
Before removing the food tank, be sure the food tank is empty in case of food **spilling all over**.



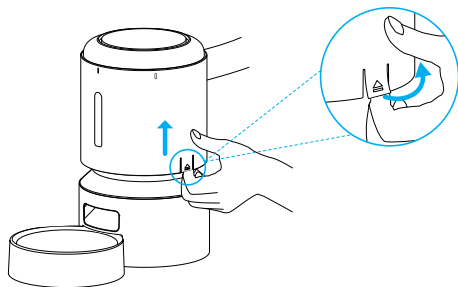
1. Disconnect power before cleaning.



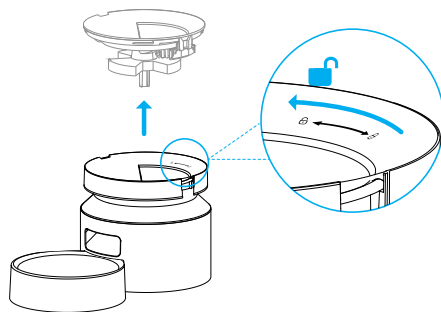
2. Twist anticlockwise to remove the lid and take out the desiccant bag from the inner box under the lid.



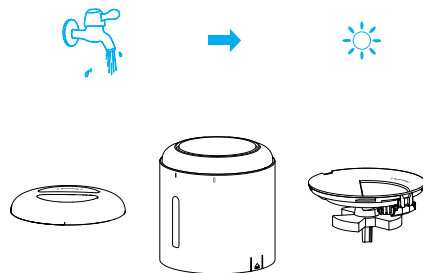
3. Pull the notches on both sides outward a little and then up to remove the food tank.



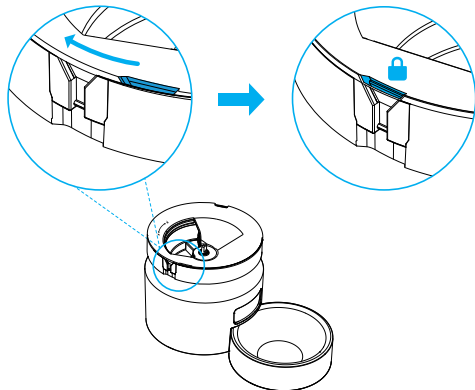
4. Twist anticlockwise to remove the tank base.



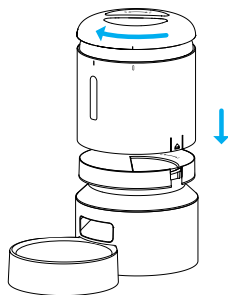
5. Thoroughly rinse and air dry the lid, tank and tank base .



6. Refit them to the machine. Turn the tank base clockwise until it snaps into place

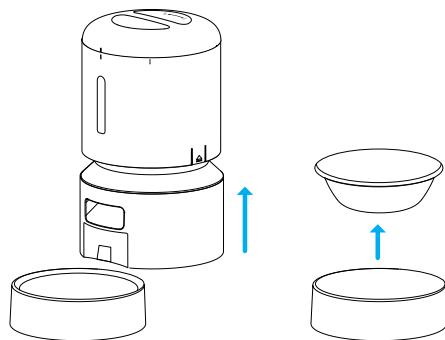


7. Then install the tank and lid.

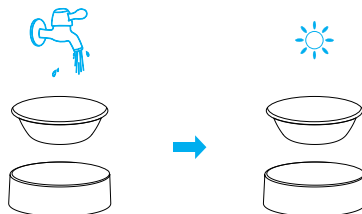


## Clean the Food Bowl

1. Press down the food bowl with holder to remove them.



2. Rinse and air dry them thoroughly before refitting them to the machine.





## TROUBLESHOOTING

The answers to these questions should help you solve most problems you may have with the pet feeder. If they do not, please contact our Customer Care Center via [support@petlibro.com](mailto:support@petlibro.com)

Problem	Solution
Can't connect the feeder to WiFi	<ol style="list-style-type: none"><li>1) Keep the feeder and your phone close to your router, make sure the network signal is good.</li><li>2) Restart the feeder.</li><li>3) Follow the APP's instructions or our operation videos to add the feeder. There are more than 1 adding methods to choose from.</li><li>4) Contact our after-sales team via email for help.</li></ol>
The WiFi connection goes offline frequently	<ol style="list-style-type: none"><li>1) Keep the feeder close to your router, make sure the network signal is good. It is ideal to make it within 6 meters / 19.7ft without obstacles and walls.</li><li>2) Make sure the power cord is connected firmly.</li><li>3) Restart the feeder.</li></ol>
I press the buttons but they don't work.	Press and hold the Unlock Button for 5s to unlock the buttons.
The indicators are off.	<ol style="list-style-type: none"><li>1) Check whether the electricity is cut off.</li><li>2) Check whether the indicator function is off on the App.</li></ol>
The portion amount is not the same.	The first few portions may vary, but it doesn't mean the appliance is faulty. After about 6 feedings, it should be almost even.

Problem	Solution
The food won't come out.	<ol style="list-style-type: none"><li>1) Please make sure the food in the tank is dry, and food size is within 2-15 mm / 0.07-0.6 inch in diameter.</li><li>2) Remove the food tank and tank base, check if the chute inside is blocked.</li><li>3) Check if the anti-clog detector at the food outlet is dirty or blocked.</li><li>4) Check whether the battery level is low, whether the power adapter is connected, whether power outage occurs when the power adapter is connected and batteries are not installed.</li></ol>
I can't remove the food tank.	Please pull the notches on both sides outward a little and then up to remove the food tank.

## SPECIFICATIONS

Model	PLAF103
Capacity	5 liters
Power	DC 5V power adapter; 3 x alkaline D batteries (not included)
Power Adapter	AC100-240V, 50 / 60Hz Input, DC 5V output
Operating Temperature	0°C - 55°C / 32°F - 131°F
Dimensions	34 x 19 x 19 cm / 13 x 7.5 x 7.5 in
Net Weight	1.66kg / 3.66lbs