
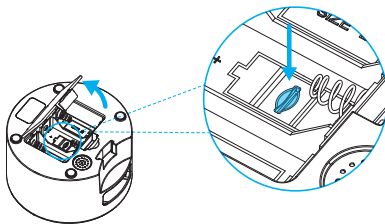


ENABLE THE VIDEO RECORDING

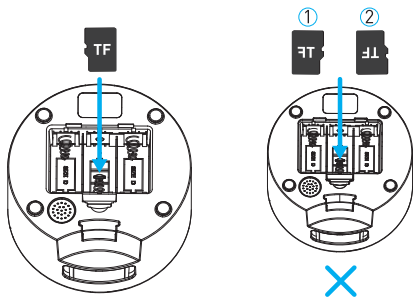
To enable the video recording function, insert a TF card (not included) first, then enable the Local Recording option in the APP: tap  icon in the upper right corner → Storage Settings → Local Recording.

1) Open the battery compartment, the TF card slot is in the middle of the battery compartment.



2) Insert the TF card in the direction shown. Slide it in until it clicks into place.

Do not force or apply excess force when inserting the TF card.



Note: Insert the TF card correctly. Not doing so can cause a malfunction.



PETLIBRO

Granary Automatic Pet Feeder - Camera Monitoring 5L



PETLIBRO

Quick Guide

Model: PLAF203

- If the feeder is only powered by batteries, the WiFi function will be turned off and the user will not be able to remotely control the feeder through the App.
- Keep the feeder close to the router. The distance is in a range of 6 meters without barriers is recommended.
- If the configuration fails, please power off and reset the feeder (press and hold the reset button for 5s) until the WiFi indicator keeps flashing.
- The feeder supports 2.4GHz and 5GHz WiFi .
- System requirements: iPhone on iOS 10.0 or later; smartphone on Android 5.0 or later.

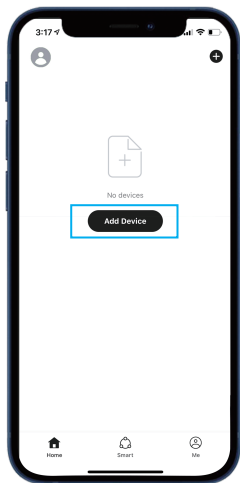
ADD THE FEEDER VIA BLUETOOTH MODE

1. Install the APP & Log in

1) Search "PETLIBRO LITE" in App Store  or Google Play  to download the App.

2) Sign up and log into your account.

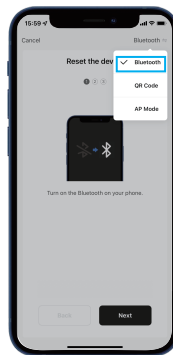
2. Open the App, select Home page, tap "Add Device" or "+" in the upper right corner.



3. Choose PLAF203 Camera Feeder.



4. Tap the icon in the top right corner and choose **Bluetooth mode**.

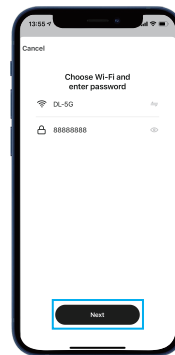
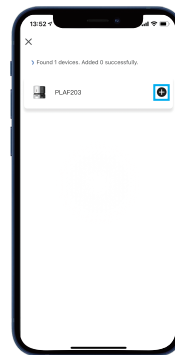


5. Follow the instructions on the screen, and **confirm the WiFi indicator on the feeder is flashing**.

(Note: If the WiFi indicator on the feeder is not flashing, hold the unlocked button for 5s to unlock, the lock indicator goes out. Keep holding the reset button until the WiFi indicator keeps flashing.)



6. Add the device PLAF203 by entering WiFi account and password.



7. Feeder connected, start to set the feeding time and portions, record meal call, and set the times the meal call play.