



For The ON-THE-GO Pet™

# INSTRUCTION MANUAL INDOOR/OUTDOOR CARPETED BI-FOLD PET RAMP

PG9050TN



To see our full line of products, visit us online at: [www.petgearinc.com](http://www.petgearinc.com)

## CUSTOMER SERVICE HELP DESK

[customerservice@petgearinc.com](mailto:customerservice@petgearinc.com)

Toll-Free 877-752-9123 - Eastern Standard Time 8am-3pm, Monday through Friday

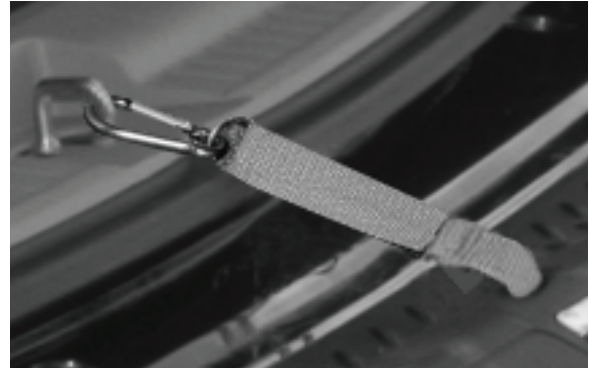
# PARTS LIST

Check that you have all the parts shown BEFORE assembling your product.  
If any parts are missing, call Customer Service.

Ramp



Security Strap



# INSTRUCTIONS FOR USE

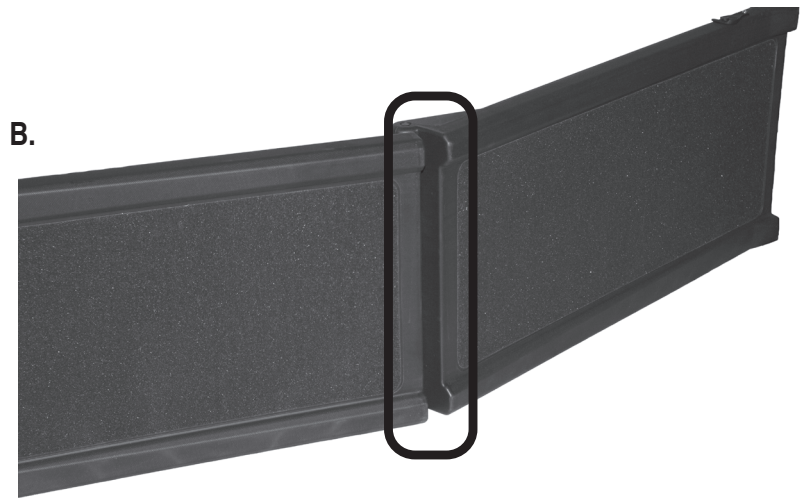
Step 1. Unfold ramp and place on firm surface with carpet surface facing up (Figure A).

A.



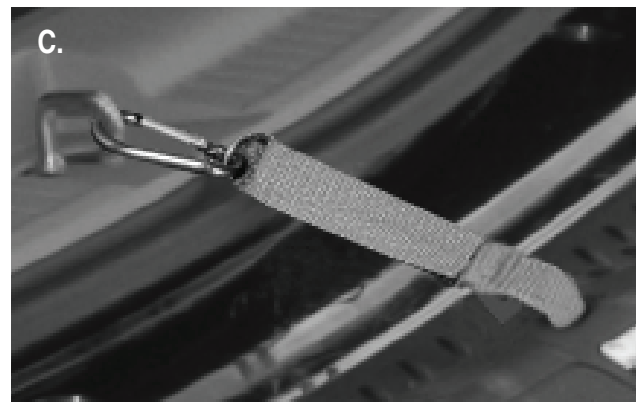
# INSTRUCTIONS FOR USE

Watch for pinch points while unfolding ramp (Figure B).



Step 2. Be sure the ramp is secure and all four corners are supported.

Step 3. If used on the rear entrance of a van or SUV, attach the security strap to the floor door latch, as shown (Figure C).



## FABRIC CARE

The carpet tread removes easily and is machine washable in gentle detergent.

## WARNING!

- Before use, be sure ramp is installed according to instructions.
- Use as a pet ramp **ONLY!**
- Do not use to load people or other objects.
- Never leave the ramp unattended.
- The ramp is designed to support a maximum load of 150 lbs. when installed properly.
- Exceeding the load limit will void the product warranty and may cause injury to the pet or pet owner.
- Never use the ramp while the vehicle is in motion.

### FOR PETS ONLY.

Not intended to be used as a restraining device for aggressive or dangerous animals that dig, chew or paw aggressively. Do not leave your pet unattended. **PET GEAR** is not liable for any damage caused by aggressive, destructive, immature or untrained animals. Do not use near an open or exposed flame. Failure to follow these warnings and the instructions could result in serious injury or death.

## REPLACEMENT PARTS

Use only **PET GEAR** replacement parts.

Please have your model number ready before calling.

You can also request parts: <http://www.petgearinc.com/main.asp?sel=2>



192 Sheldon Avenue • West Rutland, VT 05777 • 877-752-9123 • [www.petgearinc.com](http://www.petgearinc.com)