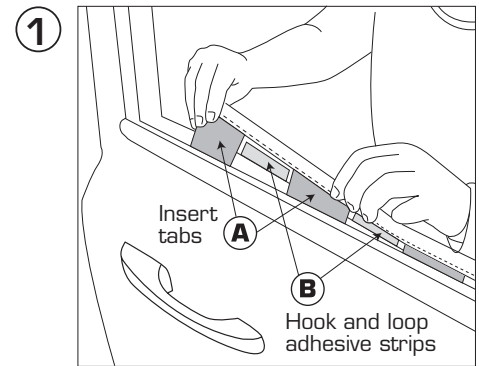


Instructions and care

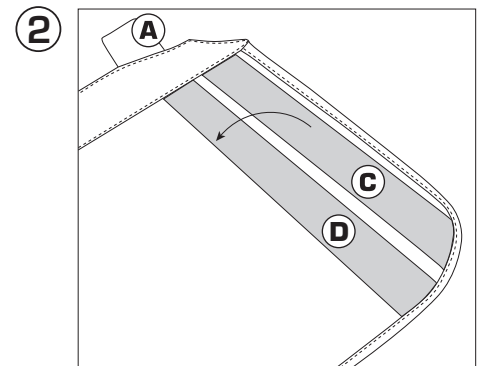
Installation:

1) **OPTION A:** Open car door and stand facing the window from the inside. Hold the Car Door Guard™ so insert tabs (A) are facing downward and mesh pockets are facing you. With window up, slide tabs (A) between window and the window seal. Door guard should hang snugly in place. **Note: For some cars you may find it easier to insert the Door Guard with the window down.**



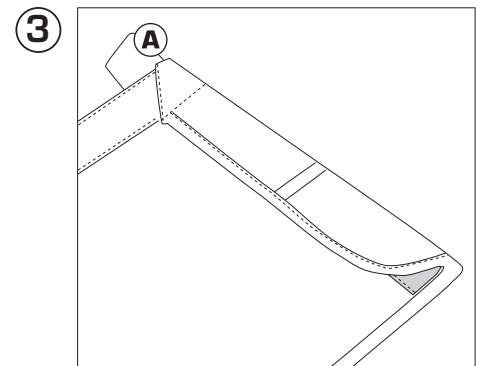
OPTION B: Open car door and stand facing the window from the inside. Locate the six (6) pieces of hook with adhesive back and attach them to the loop portion which is sewn on the door guard. Hold the Door Guard so that the hook and loop strips are facing the door and the mesh pocket is facing you. Remove the paper backing but leave the hook and loop pieces stuck together. Line up the top of the Door Guard just below the window and press down to apply the strips to the door. We then recommend you remove the door guard carefully and allow the adhesive hook portion of the strip to set for 48 hours before reattaching the door guard.

2) The Car Door Guard can be adjusted for smaller doors. If the guard is too wide for your door, fold panel (C) over and apply pressure along the length to secure to panel (D). Figure 3 shows the folded door guard adjusted for door size.



When using with the window down:

It is recommended that the door guard be weighted down when in use on a door with the window down. Placing items in the cargo pocket of the door guard will provide enough weight to prevent it from flying out the window.



NOTICE: Please contact Kurgo directly with any product or return inquiries. Thank you for your recent purchase of the Car Door Guard. If you have any questions or concerns please contact us directly before you contact the retailer; we are great problem solvers. We hope that you will be happy with your purchase and will think of Kurgo next time you travel with your dog.



Become a fan of Kurgo on Facebook so you can receive all the latest updates, giveaways and contest information.

Cleaning Instructions

Our product cleaning instructions will help ensure that your gear has a long, exciting life. In general, washing by hand and hang air-drying is the best way to care for your Kurgo products. However, for the occasions when the mess is too great and time is too tight, we recommend using a washing machine.

Hand Wash Instructions

Note: Recommended for small messes.

1. Brush off loose dirt with a dry brush.
2. Spot clean with a damp sponge, cold water, and mild soap. Avoid harsh detergents.
3. If necessary, rinse larger area to eliminate excess soap residue.
4. Hang to air dry (do not machine dry).

Machine Wash Instructions

Note: Only machine wash gentle in front-loading units (DO NOT use machine with an agitator as it could cause damage not covered under the Kurgo Warranty)

1. Wash with cold water and mild soap. Avoid harsh detergents.
2. Rinse thoroughly to eliminate soap residue.
3. Hang to air dry (do not machine dry).



Please contact Kurgo directly with any product or warranty inquiries.