

## Disassembling the Carrier

Release the Assembly Buckles by pushing the yellow buttons to allow Buckles to disengage. As you lift up on the Carrier Top, remove the Door and completely remove the Carrier Top. The Door and Carrier Top can be nested inside the Carrier Bottom for storage.



### LIMITED MANUFACTURERS WARRANTY

- For one (1) year from the date of original purchase, MIDWEST Homes For Pets ("MIDWEST") warrants to the purchaser of this Skudo Travel Carrier that, should it prove defective by reason of improper workmanship and/or material, MIDWEST will repair or replace, at its option, any defective part of the Skudo Travel Carrier, without charge for the part or for shipping. Replacement parts are warranted for the remainder of the original period.
- THIS WARRANTY DOES NOT COVER** defects in the furniture caused by any animal, any physical abuse to or misuse of the pet cage, any damage caused by the original purchaser or any third party, or any defects arising or discovered more than one (1) year from the original retail purchase date.
- STEPS TO OBTAIN WARRANTY SERVICE:**
  - The purchaser must call MIDWEST's HELPLINE, 800-428-8560, to report the alleged defect to a customer service representative or obtain missing parts.
  - The customer service representative will determine if the defect is covered by this warranty, and if it is, will authorize and instruct the purchaser in how to obtain corrective action.
  - MIDWEST may require the purchaser to present the sales receipt or other proof of purchase prior to authorizing any return or replacement. No returns or replacements will be permitted without proper authorization. If a return or replacement is authorized, you may be requested to return the item to MIDWEST or to make the item available for pick-up by MIDWEST.
- ANY EXPRESS WARRANTY NOT PROVIDED IN THIS WARRANTY DOCUMENT, AND ANY REMEDY FOR BREACH OF CONTRACT THAT, BUT FOR THIS PROVISION, MIGHT ARISE BY IMPLICATION OR OPERATION OF LAW, IS HEREBY EXCLUDED AND DISCLAIMED. THE IMPLIED WARRANTIES OF MERCHANTABILITY AND OF FITNESS FOR ANY PARTICULAR PURPOSE ARE EXPRESSLY LIMITED TO A TERM OF ONE (1) YEAR. SOME STATES DO NOT ALLOW LIMITATIONS ON HOW LONG AN IMPLIED WARRANTY LASTS, SO THE ABOVE LIMITATIONS MAY NOT APPLY TO YOU.**
- UNDER NO CIRCUMSTANCES SHALL MIDWEST BE LIABLE TO PURCHASER OR ANY OTHER PERSON OR ANY SPECIAL, INCIDENTAL OR CONSEQUENTIAL DAMAGES, WHETHER ARISING OUT OF BREACH OF WARRANTY, BREACH OF CONTRACT OR OTHERWISE, SOME STATES DO NOT ALLOW THE EXCLUSION OR LIMITATIONS OF INCIDENTAL OR CONSEQUENTIAL DAMAGES, SO THE ABOVE LIMITATIONS OR EXCLUSION MAY NOT APPLY TO YOU.**
- This warranty gives you specific legal rights, and you may also have other rights which vary from state to state.

For a Complete Listing of Products

Crates • Pet Beds  
Crate Casters • Ex Pens • Kennels ...

- Come Visit Our Website



Skudo Travel Carrier Small INST (1312)

# Skudo

800-428-8560  
midwesthomes4pets.com  
P.O. Box 1031  
Muncie, Indiana 47308



Assembly Instructions for Models 1418TSG, 1422TSG, 1424TSG

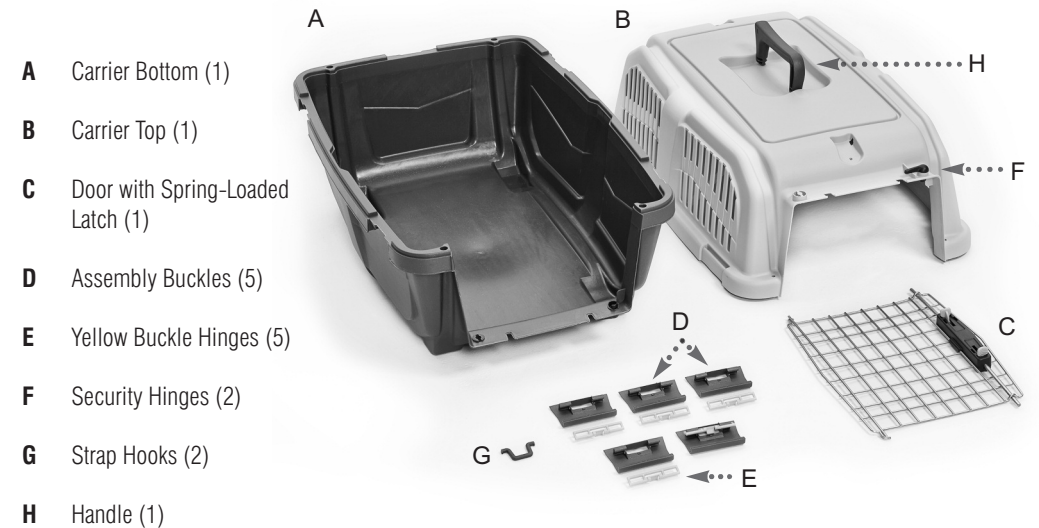
## IMPORTANT INFORMATION

This carrier is intended for well-trained pets. Supervision required. Remove collar, tags and leads from pet before placing it in the carrier to prevent possible entanglement. Contains small parts. Keep out of reach of children.

Approved for use on most major airlines. It is recommended that you check with the airline for specifications prior to booking.

Unwrap and remove all parts from packaging. Keep all packaging material until the product is assembled. In case of return or exchange, failure to return product in similar condition as received could result in limited reimbursement. Please save sales receipt as proof of purchase for warranty purposes. Check to ensure you have all the parts below. If you discover any parts are missing, immediately call our toll-free service helpline at 1-800-428-8560 (Monday - Friday 9 a.m. to 4 p.m. EST) or at [info@midwesthomes4pets.com](mailto:info@midwesthomes4pets.com). **To protect the finish of your travel carrier use only mild, non-abrasive cleaners and water. Any course scrubbing or abrasive materials could damage the plastic.**

## PARTS IDENTIFICATION

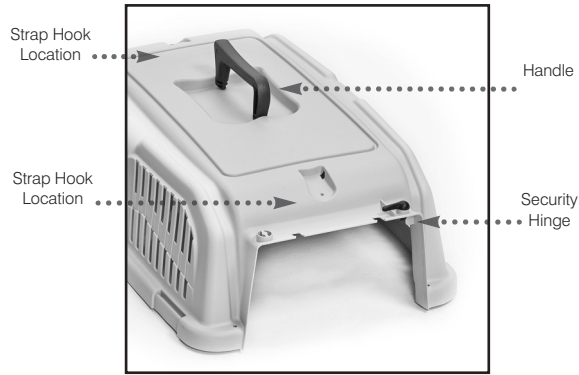


Watch the Skudo Travel Carrier Assembly Video!  
Scan the QR code or visit  
[midwesthomes4pets.com/services/skudo-travel-carrier-small](http://midwesthomes4pets.com/services/skudo-travel-carrier-small)

# ASSEMBLY INSTRUCTIONS

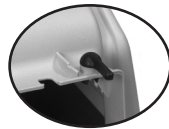
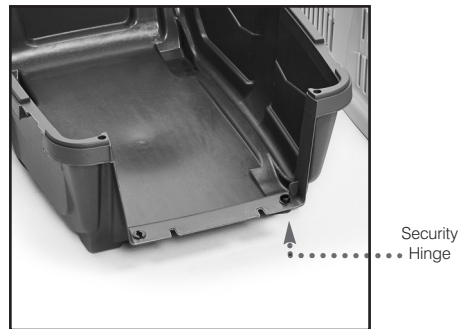
- Place the Carrier Top on a flat surface. Attach the Strap Hooks in the front and back, attach one Security Hinge, and attach the Handle.

*Note: The Handle comes pre-attached on the 24" carrier.*

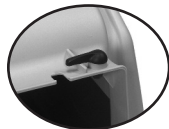


- Attach the remaining Security Hinge to the Carrier Bottom.

*When the Security Hinges are in the "open" position, the door can be opened and will remain secure when closed. In the "closed" position, the Security Hinges provide additional security by adding length to the space that the door prongs must clear to open.*



Open Position



Closed Position

- Attach four Yellow Buckle Hinges to four Assembly Buckles by snapping them into place as illustrated. As an example, one has been pre-assembled for you.

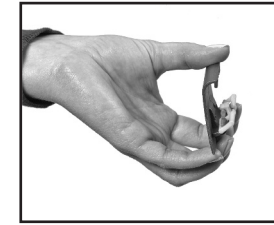


CORRECT



INCORRECT

- Place the Carrier Bottom on a flat surface and attach the Assembly Buckles. The Yellow Buckle Hinges will snap into place on the spaces provided on the Carrier Bottom; keep the Assembly Buckle and Yellow Buckle Hinge in a "V" formation while attaching for easiest application.



"V" Formation



- Place the Carrier Top on the Carrier Bottom. Before locking the Buckles, attach the Door by placing the bottom door prong into the hole on the left side of the Carrier Bottom. Lift up on the Carrier Top to insert the top door prong into the Carrier Top. Lower the Carrier Top so it rests on the Carrier Bottom and secure them together by locking the Assembly Buckles.

*NOTE: The assembled carrier has multiple tie-down locations in the corners for use with plastic ties. This is recommended for air travel.*



- To Operate the Door, squeeze the orange tabs to disengage the spring-loaded prongs, then swing the door open.

